

Converting Colors

`RYB(224, 204, 195)`

Have a look what the booklet for
RYB(224, 204, 195) contains.

RYB(224, 204, 195)	3
<i>Conversions</i>	4
<i>Details</i>	6
<i>Harmonies</i>	11
<i>Previews</i>	23
<i>Color Blindness Simulation</i>	26
<i>CSS Examples</i>	29

Color

R_YB(224, 204, 195)

Conversions

Conversions Part 1

Format	Color
Hex	E0CAC3
RGB	224, 202, 195
RGB Percent	88%, 79%, 76%
CMY	0.1216, 0.2084, 0.2353
CMYK	0.00, 0.10, 0.13, 0.12
HSL	14°, 32%, 82%
HSV	14°, 13%, 88%
XYZ	61.6805, 61.9668, 60.3396
YIQ	207.7800, 15.3590, 2.4870

Conversions

Conversions Part 2

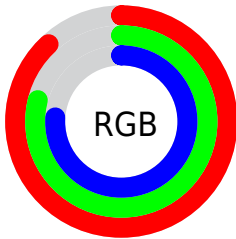
Format	Color
R_{YB}	224, 204, 195
Decimal	14731971
CIE _{Lab}	82.90, 6.61, 6.23
CIE _{LCh}	83, 9.086, 43.313
Yxy	61.9668, 0.3352, 0.3368
Android (android.graphics.Color)	4292922051 (0xFFE0CAC3)
YUV	207.7800, -6.3005, 14.2249
Hunter-Lab	78.7190, 2.1060, 9.6563

Details

The RYB color **224, 204, 195** is a light color, and the websafe version is hex **CCCCCC**. A complement of this color would be **195, 208, 224**, and the grayscale version is **208, 208, 208**.

A 20% lighter version of the original color is 252, 255, 252, and **169, 150, 141** is the 20% darker color. If you saturate the color by 10%, you get **224, 189, 173**, and if you desaturate by 10%, it is **224, 220, 217**.

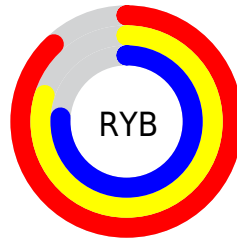
Distribution



Red (88%)

Green (79%)

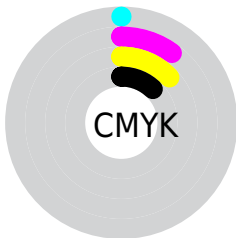
Blue (76%)



Red (88%)

Yellow (80%)

Blue (76%)

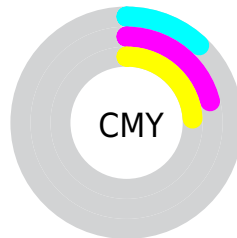


Cyan (0%)

Magenta (10%)

Yellow (13%)

Black (12%)



Cyan (12%)

Magenta (21%)

Yellow (24%)

Brightness & Saturation Gradients

These gradients show how the RYB color 224, 204, 195 changes by changing the brightness by 10 percent. The first figure shows a shift by +10% for each color and the second figure -10%.


Similar to the brightness gradients but the following saturation gradients show a change of the RYB color 224, 204, 195 by changing the saturation by 10% instead.

 224, 204, 195


255, 255, 255

252, 255, 252


 224, 204, 195


 196, 176, 168

 169, 150, 141

 142, 124, 116

 116, 99, 91

 91, 74, 68

 68, 52, 46

 45, 32, 25

 26, 6, 0

 0, 0, 0

224, 204, 195

224, 204, 195

224, 189, 173

224, 220, 217

224, 174, 150

224, 231, 240

224, 158, 128

224, 239, 255

224, 142, 105

224, 240, 255

224, 126, 83

224, 111, 61

224, 96, 38

224, 80, 16

224, 69, 0

Harmonies

Analogous

The Analogous color harmony consists of three colors that are next to each other on the color wheel.



225, 201, 203



224, 204, 195



218, 218, 190

Triad

The Triadic color harmony groups three colors that are evenly spaced from another and form a triangle on the color wheel.



224, 204, 195



191, 204, 211



202, 205, 223

Complementary

The Complementary color scheme is a pair of colors which are on the opposite of each other on the color wheel.



224, 204, 195



195, 208, 224

Split Complementary

Split-complementary colors differ from the complementary color scheme. The scheme consists of three colors, the original color and two neighbors of the complement color.



193, 203, 222



224, 204, 195



186, 200, 212

Square

The Square scheme is like the rectangle color scheme, but the four colors are evenly spaced on the color wheel.



224, 204, 195



194, 210, 204



187, 201, 218



213, 203, 219

Rectangle

The Rectangle color scheme consists of four colors that form a rectangle on the color wheel.



224, 204, 195



199, 213, 189



187, 201, 218



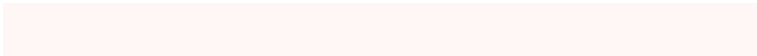
199, 205, 223

Sweetspot

The Sweet Spot groups the original color and five complimentary colors.



224, 204, 195



255, 248, 245



224, 195, 217



128, 124, 121



0, 0, 0



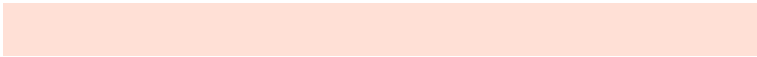
128, 128, 128

Same Dimension

The Same Dimension uses a secret algorithm to generate beautiful new colors.



224, 204, 195



255, 227, 214



206, 224, 195



112, 105, 101



176, 55, 0



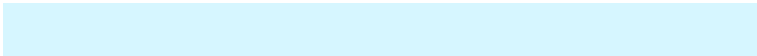
48, 14, 0

Inverse Universe

The Inverse Universe completely reimagines the original color for something new.



195, 208, 224



214, 232, 255



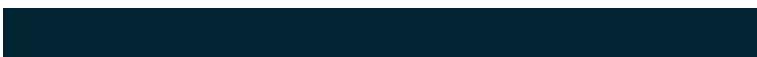
195, 201, 224



101, 106, 112



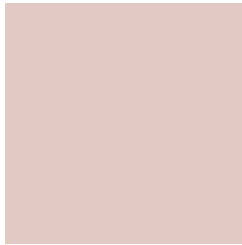
0, 76, 176



0, 21, 48

Previews

White Background



This preview shows how the RYB color 224, 204, 195 looks on a white background.

Color Contrast Check

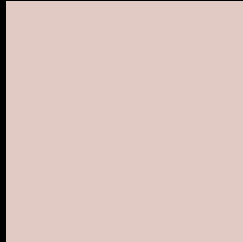
Large Text (above 18pt) WCAG AA × Fail

Any Text WCAG AA × Fail

Large Text (above 18pt) WCAG AAA × Fail

Any Text WCAG AAA × Fail

Black Background



This preview shows how the RYB color 224, 204, 195 looks on a black background.

Color Contrast Check

Large Text (above 18pt) WCAG AA ✓ Pass

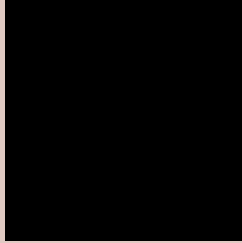
Any Text WCAG AA ✓ Pass

Large Text (above 18pt) WCAG AAA ✓ Pass

Any Text WCAG AAA ✓ Pass

If you want to check with other color combinations, try the [Color Contrast Checker](#).

RYP 224, 204, 195 Background



This preview shows how black text looks on a background with the RYB color 224, 204, 195.



This preview shows how white text looks on a background with the RYB color 224, 204, 195.

Color Blindness Simulation

Color vision deficiency is a very complex topic, and I could not describe the different causes any better than Wikipedia does, so if you want to learn more, you should check out their [article about color blindness](#).


Dichromacy



Original Color
224, 204, 195

Protanopia
207, 212, 197

Deuteranopia
231, 200, 195



Tritanopia
227, 199, 214

Trichromacy



Original Color

224, 204, 195

Protanomaly

216, 209, 196

Deuteranomaly

228, 201, 195

Tritanomaly

226, 200, 207

Monochromacy



Original Color

224, 204, 195

Achromatopsia

208, 208, 208

Achromatomaly

214, 207, 203

CSS Examples

Text

The CSS property to change the color of the text to RYB 224, 204, 195 is called "color". The color property can be set on classes, ids or directly on the HTML element.

This example shows how text in the color `rgb(224, 202, 195)` looks like.

```
.text, #text, p{  
    color:rgb(224, 202, 195)  
}
```

If you want to add a text shadow in that color use the text-shadow property, you can generate a text shadow directly with our [CSS Text Shadow Generator](#).

Here you see how black text with a 4 pixel rgb(224, 202, 195) colored shadow looks like.

```
.shadow{ text-shadow: 4px 4px 2px rgb(224, 202, 195) }
```

Border

The CSS property to change the border of an element to RYB 224, 204, 195 is called "border". The border property can be set on classes, ids or directly on the HTML element.

This example shows the color as border, it can be applied via the CSS property "border" or "border-color".

```
.border, #border, table{ border:4px solid rgb(224, 202, 195) }
```

If only the border color should be changed use the property `border-color`.

```
.border{ border-color:rgb(224, 202, 195) }
```

If you want to add a box shadow in that color use:

Here you see how a box with a 4 pixel `rgb(224, 202, 195)` colored shadow looks like.

```
.boxshadow{ -moz-box-shadow:4px 4px 4px  
4px rgb(224, 202, 195); -webkit-box-  
shadow:4px 4px 4px 4px rgb(224, 202, 195);  
box-shadow:4px 4px 4px 4px rgb(224, 202,  
195) }
```

Background

The CSS property to change the background color of an element to RYB 224, 204, 195 is called "background". The background property can be set on classes, ids or directly on the HTML element.

```
.background, #background, body{  
background: rgb(224, 202, 195) }
```

If only the background color should be changed can be used:

```
.background{ background-color: rgb(224,  
202, 195) }
```

This example shows the color as background, it is applied via the CSS property "background".

To optimize and compress your CSS code, you can use our [online CSS compressor and optimizer](#) based on csstidy. If you want to create a linear or radial gradient as background or border, check our [CSS Gradient Generator](#).

Hey! You found this booklet interesting? Support Converting Colors with the new Membership Option!

The pro membership hides all ads, plus gives you double the colors in the color bucket, and more awesome pro features!

[Learn more, Memberships starting at \\$2.50/m!](#)

**Follow me
on Twitter!**

@ConvertingColor