

Converting Colors

`RYB(225, 144, 162)`

Have a look what the booklet for
RYB(225, 144, 162) contains.

RYB(225, 144, 162)	3
<i>Conversions</i>	4
<i>Details</i>	6
<i>Harmonies</i>	11
<i>Previews</i>	23
<i>Color Blindness Simulation</i>	26
<i>CSS Examples</i>	29

Color

R_YB(225, 144, 162)

Conversions

Conversions Part 1

Format	Color
Hex	E190A2
RGB	225, 144, 162
RGB Percent	88%, 56%, 64%
CMY	0.1176, 0.4353, 0.3647
CMYK	0.00, 0.36, 0.28, 0.12
HSL	347°, 57%, 72%
HSV	347°, 36%, 88%
XYZ	47.5462, 38.5627, 39.1198
YIQ	170.2710, 42.4980, 22.7700

Conversions

Conversions Part 2

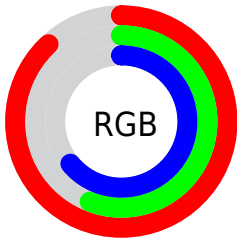
Format	Color
R_{YB}	225, 144, 162
Decimal	14782626
CIE _{Lab}	68.43, 32.98, 3.39
CIE _{LCh}	68, 33.151, 5.875
Yxy	38.5627, 0.3797, 0.3079
Android (android.graphics.Color)	4292972706 (0xFFE190A2)
YUV	170.2710, -4.0776, 47.9973
Hunter-Lab	62.0989, 27.9960, 6.1189

Details

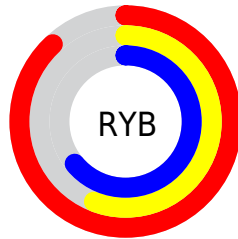
The RYB color **225, 144, 162** is a light color, and the websafe version is hex **CC9999**. A complement of this color would be **144, 190, 225**, and the grayscale version is **170, 170, 170**.

A 20% lighter version of the original color is **255, 199, 217**, and **168, 92, 111** is the 20% darker color. If you saturate the color by 10%, you get **225, 122, 144**, and if you desaturate by 10%, it is **225, 167, 179**.

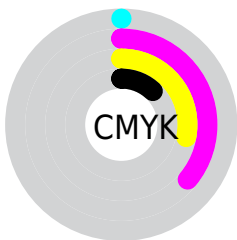
Distribution



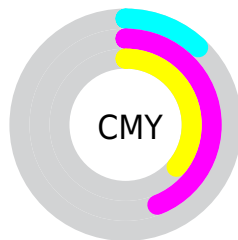
- Red (88%)
- Green (56%)
- Blue (64%)



- Red (88%)
- Yellow (56%)
- Blue (64%)



- Cyan (0%)
- Magenta (36%)
- Yellow (28%)
- Black (12%)



- Cyan (12%)
- Magenta (44%)
- Yellow (36%)

Brightness & Saturation Gradients

These gradients show how the RYB color 225, 144, 162 changes by changing the brightness by 10 percent. The first figure shows a shift by +10% for each color and the second figure -10%.

Similar to the brightness gradients but the following saturation gradients show a change of the RYB color 225, 144, 162 by changing the saturation by 10% instead.

 225, 144, 162

255, 255, 255

 255, 199, 217

 255, 227, 245

 225, 144, 162

 196, 118, 136

 168, 92, 111

 140, 67, 86

 113, 43, 63

 87, 18, 41

 61, 0, 21

 39, 0, 1

 0, 0, 0

 225, 144, 162

 225, 144, 162

■ 225, 122, 144

■ 225, 167, 179

■ 225, 99, 127

■ 225, 189, 197

■ 225, 77, 109

■ 225, 211, 214

■ 225, 54, 92

■ 225, 230, 234

■ 225, 32, 74

■ 225, 241, 255

■ 225, 9, 57

■ 225, 240, 255

■ 225, 0, 50

Harmonies

Analogous

The Analogous color harmony consists of three colors that are next to each other on the color wheel.



210, 148, 192



225, 144, 162



223, 151, 133

Triad

The Triadic color harmony groups three colors that are evenly spaced from another and form a triangle on the color wheel.



225, 144, 162



117, 176, 144



88, 141, 221

Complementary

The Complementary color scheme is a pair of colors which are on the opposite of each other on the color wheel.



225, 144, 162



144, 190, 225

Split Complementary

Split-complementary colors differ from the complementary color scheme. The scheme consists of three colors, the original color and two neighbors of the complement color.



61, 126, 201



225, 144, 162



113, 161, 181

Square

The Square scheme is like the rectangle color scheme, but the four colors are evenly spaced on the color wheel.



225, 144, 162



126, 182, 107



78, 133, 183



135, 159, 226

Rectangle

The Rectangle color scheme consists of four colors that form a rectangle on the color wheel.



225, 144, 162



214, 173, 118



78, 133, 183



75, 135, 216

Sweetspot

The Sweet Spot groups the original color and five complimentary colors.



225, 144, 162



255, 227, 233



206, 144, 225



128, 111, 115



0, 0, 0



128, 128, 128

Same Dimension

The Same Dimension uses a secret algorithm to generate beautiful new colors.



225, 144, 162



255, 145, 170



225, 174, 144



112, 101, 103



176, 0, 39



48, 0, 11

Inverse Universe

The Inverse Universe completely reimagines the original color for something new.



225, 144, 162



255, 145, 170



144, 178, 225



112, 101, 103



176, 0, 39



48, 0, 11

Previews

White Background



This preview shows how the RYB color 225, 144, 162 looks on a white background.

Color Contrast Check

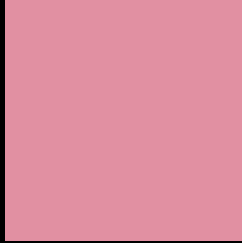
Large Text (above 18pt) WCAG AA × Fail

Any Text WCAG AA × Fail

Large Text (above 18pt) WCAG AAA × Fail

Any Text WCAG AAA × Fail

Black Background



This preview shows how the RYB color 225, 144, 162 looks on a black background.

Color Contrast Check

Large Text (above 18pt) WCAG AA ✓ Pass

Any Text WCAG AA ✓ Pass

Large Text (above 18pt) WCAG AAA ✓ Pass

Any Text WCAG AAA ✓ Pass

If you want to check with other color combinations, try the [Color Contrast Checker](#).

RYB 225, 144, 162 Background



This preview shows how black text looks on a background with the RYB color 225, 144, 162.

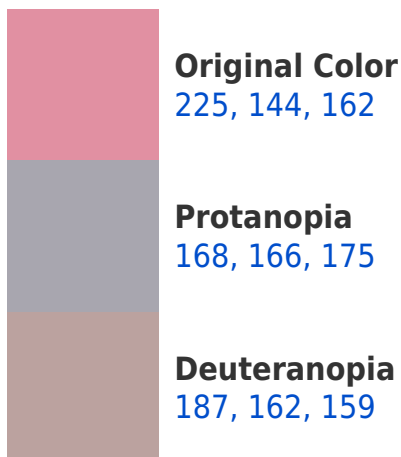



This preview shows how white text looks on a background with the RYB color 225, 144, 162.

Color Blindness Simulation

Color vision deficiency is a very complex topic, and I could not describe the different causes any better than Wikipedia does, so if you want to learn more, you should check out their [article about color blindness](#).

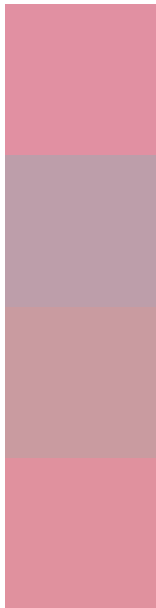
Dichromacy





Tritanopia
224, 145, 156

Trichromacy



Original Color

225, 144, 162

Protanomaly

189, 158, 170

Deuteranomaly

201, 155, 160

Tritanomaly

224, 145, 158

Monochromacy



Original Color

225, 144, 162

Achromatopsia

170, 170, 170

Achromatomaly

190, 161, 167

CSS Examples

Text

The CSS property to change the color of the text to RYB 225, 144, 162 is called "color". The color property can be set on classes, ids or directly on the HTML element.

This example shows how text in the color `rgb(225, 144, 162)` looks like.

```
.text, #text, p{  
    color:rgb(225, 144, 162)  
}
```

If you want to add a text shadow in that color use the text-shadow property, you can generate a text shadow directly with our [CSS Text Shadow Generator](#).

Here you see how black text with a 4 pixel rgb(225, 144, 162) colored shadow looks like.

```
.shadow{ text-shadow: 4px 4px 2px rgb(225, 144, 162) }
```

Border

The CSS property to change the border of an element to RYB 225, 144, 162 is called "border". The border property can be set on classes, ids or directly on the HTML element.

This example shows the color as border, it can be applied via the CSS property "border" or "border-color".

```
.border, #border, table{ border:4px solid rgb(225, 144, 162) }
```

If only the border color should be changed use the property `border-color`.

```
.border{ border-color:rgb(225, 144, 162) }
```

If you want to add a box shadow in that color use:

Here you see how a box with a 4 pixel `rgb(225, 144, 162)` colored shadow looks like.

```
.boxshadow{ -moz-box-shadow:4px 4px 4px 4px rgb(225, 144, 162); -webkit-box-shadow:4px 4px 4px 4px rgb(225, 144, 162); box-shadow:4px 4px 4px 4px rgb(225, 144, 162) }
```

Background

The CSS property to change the background color of an element to RYB 225, 144, 162 is called "background". The background property can be set on classes, ids or directly on the HTML element.

```
.background, #background, body{  
background: rgb(225, 144, 162) }
```

If only the background color should be changed can be used:

```
.background{ background-color: rgb(225,  
144, 162) }
```

This example shows the color as background, it is applied via the CSS property "background".

To optimize and compress your CSS code, you can use our [online CSS compressor and optimizer](#) based on csstidy. If you want to create a linear or radial gradient as background or border, check our [CSS Gradient Generator](#).

Hey! You found this booklet interesting? Support Converting Colors with the new Membership Option!

The pro membership hides all ads, plus gives you double the colors in the color bucket, and more awesome pro features!

[Learn more, Memberships starting at \\$2.50/m!](#)

**Follow me
on Twitter!**

@ConvertingColor