

Converting Colors

`RYB(225, 190, 192)`

Have a look what the booklet for
RYB(225, 190, 192) contains.

RYB(225, 190, 192)	3
<i>Conversions</i>	4
<i>Details</i>	6
<i>Harmonies</i>	11
<i>Previews</i>	23
<i>Color Blindness Simulation</i>	26
<i>CSS Examples</i>	29

Color

R_YB(225, 190, 192)

Conversions

Conversions Part 1

Format	Color
Hex	E1BEC0
RGB	225, 190, 192
RGB Percent	88%, 75%, 75%
CMY	0.1176, 0.2549, 0.2471
CMYK	0.00, 0.16, 0.15, 0.12
HSL	357°, 37%, 81%
HSV	357°, 16%, 88%
XYZ	58.9792, 56.6402, 57.6933
YIQ	200.6930, 20.2180, 8.0420

Conversions

Conversions Part 2

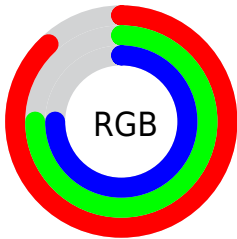
Format	Color
R _Y B	225, 190, 192
Decimal	14794432
CIE Lab	79.98, 12.78, 3.64
CIE LCh	80, 13.286, 15.890
Yxy	56.6402, 0.3403, 0.3268
Android (android.graphics.Color)	4292984512 (0xFFE1BEC0)
YUV	200.6930, -4.2856, 21.3172
Hunter-Lab	75.2597, 8.1817, 7.2307

Details

The RYB color **225, 190, 192** is a light color, and the websafe version is hex **FFCCCC**. A complement of this color would be **190, 208, 225**, and the grayscale version is **201, 201, 201**.

A 20% lighter version of the original color is **255, 246, 248**, and **169, 137, 139** is the 20% darker color. If you saturate the color by 10%, you get **225, 168, 171**, and if you desaturate by 10%, it is **225, 213, 213**.

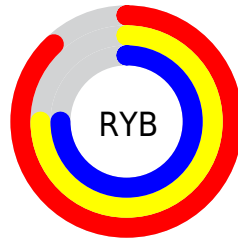
Distribution



Red (88%)

Green (75%)

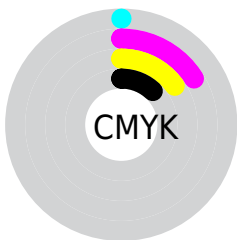
Blue (75%)



Red (88%)

Yellow (75%)

Blue (75%)

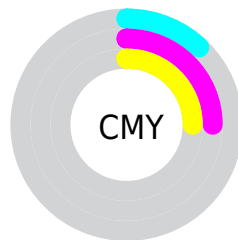


Cyan (0%)

Magenta (16%)

Yellow (15%)

Black (12%)



Cyan (12%)

Magenta (25%)

Yellow (25%)

Brightness & Saturation Gradients

These gradients show how the RYB color 225, 190, 192 changes by changing the brightness by 10 percent. The first figure shows a shift by +10% for each color and the second figure -10%.

Similar to the brightness gradients but the following saturation gradients show a change of the RYB color 225, 190, 192 by changing the saturation by 10% instead.

 225, 190, 192

 225, 190, 192

255, 255, 255

 197, 163, 165

 255, 246, 248


 169, 137, 139

 143, 111, 113

 117, 87, 89

 92, 63, 65

 68, 41, 43


 45, 20, 23

 26, 0, 1

 0, 0, 0

 225, 190, 192


 225, 190, 192

 225, 168, 171


 225, 213, 213

 225, 145, 150

 225, 230, 235

 225, 123, 128

 225, 240, 255

 225, 100, 107

 225, 78, 86

 225, 55, 65

 225, 33, 44

 225, 10, 22

 225, 0, 13

Harmonies

Analogous

The Analogous color harmony consists of three colors that are next to each other on the color wheel.



220, 190, 205



225, 190, 192



223, 196, 181

Triad

The Triadic color harmony groups three colors that are evenly spaced from another and form a triangle on the color wheel.



225, 190, 192



181, 203, 197



179, 194, 222

Complementary

The Complementary color scheme is a pair of colors which are on the opposite of each other on the color wheel.



225, 190, 192



190, 208, 225

Split Complementary

Split-complementary colors differ from the complementary color scheme. The scheme consists of three colors, the original color and two neighbors of the complement color.



169, 189, 216



225, 190, 192



175, 194, 205

Square

The Square scheme is like the rectangle color scheme, but the four colors are evenly spaced on the color wheel.



225, 190, 192



175, 201, 174



167, 187, 206



193, 197, 222

Rectangle

The Rectangle color scheme consists of four colors that form a rectangle on the color wheel.



225, 190, 192



218, 208, 176



167, 187, 206



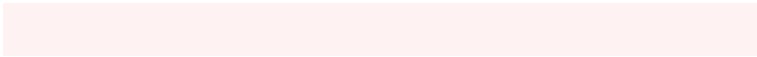
174, 191, 220

Sweetspot

The Sweet Spot groups the original color and five complimentary colors.



225, 190, 192



255, 242, 243



223, 190, 225



128, 120, 120



0, 0, 0



128, 128, 128

Same Dimension

The Same Dimension uses a secret algorithm to generate beautiful new colors.



225, 190, 192



255, 207, 209



225, 216, 190



112, 101, 102



176, 0, 10



48, 0, 3

Inverse Universe

The Inverse Universe completely reimagines the original color for something new.



225, 190, 192



255, 207, 209



190, 203, 225



112, 101, 102



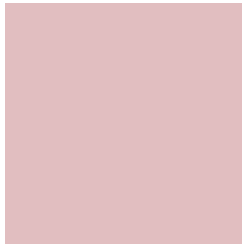
176, 0, 10



48, 0, 3

Previews

White Background



This preview shows how the RYB color 225, 190, 192 looks on a white background.

Color Contrast Check

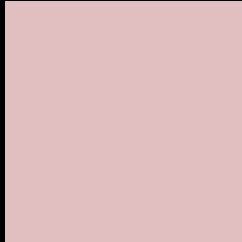
Large Text (above 18pt) WCAG AA × Fail

Any Text WCAG AA × Fail

Large Text (above 18pt) WCAG AAA × Fail

Any Text WCAG AAA × Fail

Black Background



This preview shows how the RYB color 225, 190, 192 looks on a black background.

Color Contrast Check

Large Text (above 18pt) WCAG AA ✓ Pass

Any Text WCAG AA ✓ Pass

Large Text (above 18pt) WCAG AAA ✓ Pass

Any Text WCAG AAA ✓ Pass

If you want to check with other color combinations, try the [Color Contrast Checker](#).

RYB 225, 190, 192 Background



This preview shows how black text looks on a background with the RYB color 225, 190, 192.



This preview shows how white text looks on a background with the RYB color 225, 190, 192.

Color Blindness Simulation

Color vision deficiency is a very complex topic, and I could not describe the different causes any better than Wikipedia does, so if you want to learn more, you should check out their [article about color blindness](#).


Dichromacy



Original Color
225, 190, 192

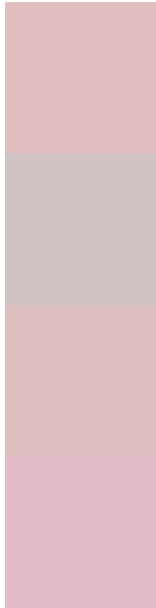
Protanopia
202, 199, 196

Deuteranopia
220, 192, 192



Tritanopia
226, 188, 203

Trichromacy



Original Color

225, 190, 192

Protanomaly

210, 195, 195

Deuteranomaly

222, 191, 192

Tritanomaly

226, 189, 199

Monochromacy



Original Color

225, 190, 192

Achromatopsia

201, 201, 201

Achromatomaly

210, 197, 198

CSS Examples

Text

The CSS property to change the color of the text to RYB 225, 190, 192 is called "color". The color property can be set on classes, ids or directly on the HTML element.

This example shows how text in the color `rgb(225, 190, 192)` looks like.

```
.text, #text, p{  
    color:rgb(225, 190, 192)  
}
```

If you want to add a text shadow in that color use the text-shadow property, you can generate a text shadow directly with our [CSS Text Shadow Generator](#).

Here you see how black text with a 4 pixel rgb(225, 190, 192) colored shadow looks like.

```
.shadow{ text-shadow: 4px 4px 2px rgb(225, 190, 192) }
```

Border

The CSS property to change the border of an element to RYB 225, 190, 192 is called "border". The border property can be set on classes, ids or directly on the HTML element.

This example shows the color as border, it can be applied via the CSS property "border" or "border-color".

```
.border, #border, table{ border:4px solid rgb(225, 190, 192) }
```

If only the border color should be changed use the property `border-color`.

```
.border{ border-color:rgb(225, 190, 192) }
```

If you want to add a box shadow in that color use:

Here you see how a box with a 4 pixel `rgb(225, 190, 192)` colored shadow looks like.

```
.boxshadow{ -moz-box-shadow:4px 4px 4px 4px rgb(225, 190, 192); -webkit-box-shadow:4px 4px 4px 4px rgb(225, 190, 192); box-shadow:4px 4px 4px 4px rgb(225, 190, 192) }
```

Background

The CSS property to change the background color of an element to RGB 225, 190, 192 is called "background". The background property can be set on classes, ids or directly on the HTML element.

```
.background, #background, body{  
background: rgb(225, 190, 192) }
```

If only the background color should be changed can be used:

```
.background{ background-color: rgb(225,  
190, 192) }
```

This example shows the color as background, it is applied via the CSS property "background".

To optimize and compress your CSS code, you can use our [online CSS compressor and optimizer](#) based on csstidy. If you want to create a linear or radial gradient as background or border, check our [CSS Gradient Generator](#).

Hey! You found this booklet interesting? Support Converting Colors with the new Membership Option!

The pro membership hides all ads, plus gives you double the colors in the color bucket, and more awesome pro features!

[Learn more, Memberships starting at \\$2.50/m!](#)

**Follow me
on Twitter!**

@ConvertingColor