

Converting Colors

`RYB(225, 206, 160)`

Have a look what the booklet for
RYB(225, 206, 160) contains.

RYB(225, 206, 160)	3
<i>Conversions</i>	4
<i>Details</i>	6
<i>Harmonies</i>	11
<i>Previews</i>	23
<i>Color Blindness Simulation</i>	26
<i>CSS Examples</i>	29

Color

R_YB(225, 206, 160)

Conversions

Conversions Part 1

Format	Color
Hex	E1BBA0
RGB	225, 187, 160
RGB Percent	88%, 73%, 63%
CMY	0.1176, 0.2669, 0.3725
CMYK	0.00, 0.17, 0.29, 0.12
HSL	25°, 52%, 75%
HSV	25°, 29%, 88%
XYZ	55.1534, 54.0595, 40.7853
YIQ	195.2840, 31.3150, -0.3410

Conversions

Conversions Part 2

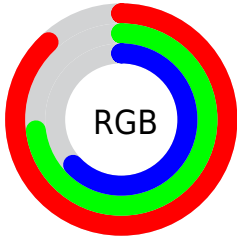
Format	Color
R _Y B	225, 206, 160
Decimal	14793632
CIE Lab	78.50, 9.73, 18.75
CIE LCh	78, 21.128, 62.575
Yxy	54.0595, 0.3677, 0.3604
Android (android.graphics.Color)	4292983712 (0xFFE1BBA0)
YUV	195.2840, -17.3950, 26.0609
Hunter-Lab	73.5252, 5.2292, 18.5787

Details

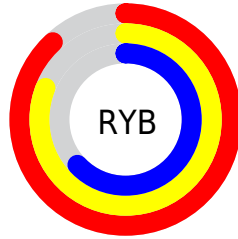
The RYB color **225, 206, 160** is a light color, and the websafe version is hex **FFCC99**. A complement of this color would be **160, 184, 225**, and the grayscale version is **195, 195, 195**.

A 20% lighter version of the original color is **232, 255, 215**, and **169, 153, 108** is the 20% darker color. If you saturate the color by 10%, you get **225, 199, 138**, and if you desaturate by 10%, it is **225, 212, 183**.

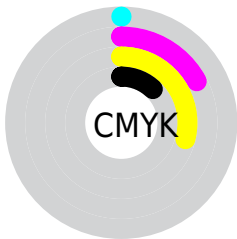
Distribution



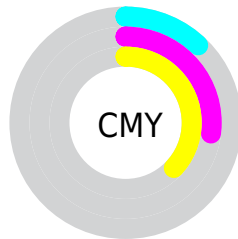
- Red (88%)
- Green (73%)
- Blue (63%)



- Red (88%)
- Yellow (81%)
- Blue (63%)



- Cyan (0%)
- Magenta (17%)
- Yellow (29%)
- Black (12%)



- Cyan (12%)
- Magenta (27%)
- Yellow (37%)

Brightness & Saturation Gradients

These gradients show how the RYB color 225, 206, 160 changes by changing the brightness by 10 percent. The first figure shows a shift by +10% for each color and the second figure -10%.

Similar to the brightness gradients but the following saturation gradients show a change of the RYB color 225, 206, 160 by changing the saturation by 10% instead.

 225, 206, 160

255, 255, 255


 232, 255, 215

 243, 255, 243


 225, 206, 160

 197, 178, 134

 169, 153, 108

 142, 125, 84

 115, 101, 61

 90, 78, 39

 65, 56, 18


 42, 35, 0

 8, 0, 0

 0, 0, 0

 225, 206, 160


 225, 206, 160

 225, 199, 138


 225, 212, 183

 225, 194, 115


 225, 218, 205

 225, 184, 93


 225, 226, 227

 225, 179, 70

 225, 234, 250

 225, 172, 48

 225, 239, 255

 225, 167, 25

 225, 240, 255

 225, 160, 3

 225, 159, 0

Harmonies

Analogous

The Analogous color harmony consists of three colors that are next to each other on the color wheel.



234, 183, 174



225, 206, 160



176, 208, 155

Triad

The Triadic color harmony groups three colors that are evenly spaced from another and form a triangle on the color wheel.



225, 206, 160



147, 180, 206



200, 189, 227

Complementary

The Complementary color scheme is a pair of colors which are on the opposite of each other on the color wheel.



225, 206, 160



160, 184, 225

Split Complementary

Split-complementary colors differ from the complementary color scheme. The scheme consists of three colors, the original color and two neighbors of the complement color.



174, 189, 233



225, 206, 160



141, 175, 215

Square

The Square scheme is like the rectangle color scheme, but the four colors are evenly spaced on the color wheel.



225, 206, 160



164, 195, 204



151, 181, 228



221, 183, 213

Rectangle

The Rectangle color scheme consists of four colors that form a rectangle on the color wheel.



225, 206, 160



158, 198, 162



151, 181, 228



191, 191, 230

Sweetspot

The Sweet Spot groups the original color and five complimentary colors.



225, 206, 160



255, 250, 232



225, 160, 199



128, 123, 113



0, 0, 0



128, 128, 128

Same Dimension

The Same Dimension uses a secret algorithm to generate beautiful new colors.



225, 206, 160



255, 229, 166



167, 225, 160



112, 110, 101



176, 125, 0



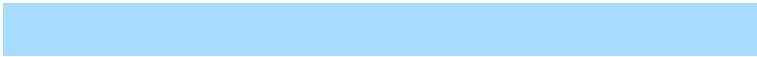
48, 34, 0

Inverse Universe

The Inverse Universe completely reimagines the original color for something new.



160, 184, 225



166, 199, 255



160, 166, 225



101, 105, 112



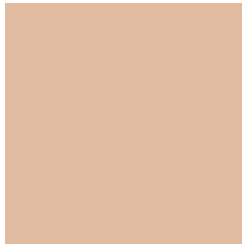
0, 65, 176



0, 18, 48

Previews

White Background



This preview shows how the RYB color 225, 206, 160 looks on a white background.

Color Contrast Check

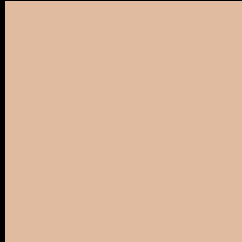
Large Text (above 18pt) WCAG AA × Fail

Any Text WCAG AA × Fail

Large Text (above 18pt) WCAG AAA × Fail

Any Text WCAG AAA × Fail

Black Background



This preview shows how the RYB color 225, 206, 160 looks on a black background.

Color Contrast Check

Large Text (above 18pt) WCAG AA ✓ Pass

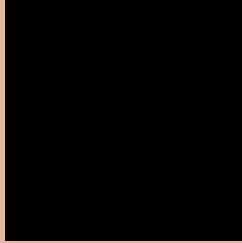
Any Text WCAG AA ✓ Pass

Large Text (above 18pt) WCAG AAA ✓ Pass

Any Text WCAG AAA ✓ Pass

If you want to check with other color combinations, try the [Color Contrast Checker](#).

RYB 225, 206, 160 Background



This preview shows how black text looks on a background with the RYB color 225, 206, 160.



This preview shows how white text looks on a background with the RYB color 225, 206, 160.

Color Blindness Simulation

Color vision deficiency is a very complex topic, and I could not describe the different causes any better than Wikipedia does, so if you want to learn more, you should check out their [article about color blindness](#).


Dichromacy



Original Color
225, 206, 160

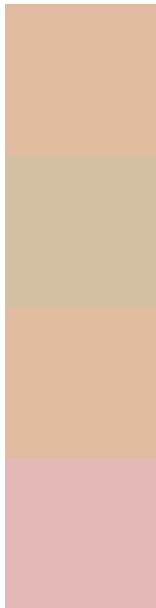
Protanopia
178, 205, 163

Deuteranopia
225, 206, 160



Tritanopia
229, 182, 196

Trichromacy



Original Color

225, 206, 160

Protanomaly

198, 212, 162

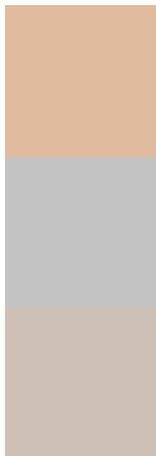
Deuteranomaly

225, 206, 160

Tritanomaly

228, 184, 183

Monochromacy



Original Color

225, 206, 160

Achromatopsia

195, 195, 195

Achromatomaly

206, 199, 182

CSS Examples

Text

The CSS property to change the color of the text to RYB 225, 206, 160 is called "color". The color property can be set on classes, ids or directly on the HTML element.

This example shows how text in the color `rgb(225, 187, 160)` looks like.

```
.text, #text, p{  
    color:rgb(225, 187, 160)  
}
```

If you want to add a text shadow in that color use the text-shadow property, you can generate a text shadow directly with our [CSS Text Shadow Generator](#).

Here you see how black text with a 4 pixel rgb(225, 187, 160) colored shadow looks like.

```
.shadow{ text-shadow: 4px 4px 2px rgb(225, 187, 160) }
```

Border

The CSS property to change the border of an element to RYB 225, 206, 160 is called "border". The border property can be set on classes, ids or directly on the HTML element.

This example shows the color as border, it can be applied via the CSS property "border" or "border-color".

```
.border, #border, table{ border:4px solid rgb(225, 187, 160) }
```

If only the border color should be changed use the property `border-color`.

```
.border{ border-color:rgb(225, 187, 160) }
```

If you want to add a box shadow in that color use:

Here you see how a box with a 4 pixel `rgb(225, 187, 160)` colored shadow looks like.

```
.boxshadow{ -moz-box-shadow:4px 4px 4px  
4px rgb(225, 187, 160); -webkit-box-  
shadow:4px 4px 4px 4px rgb(225, 187, 160);  
box-shadow:4px 4px 4px 4px rgb(225, 187,  
160) }
```

Background

The CSS property to change the background color of an element to RYB 225, 206, 160 is called "background". The background property can be set on classes, ids or directly on the HTML element.

```
.background, #background, body{  
background: rgb(225, 187, 160) }
```

If only the background color should be changed can be used:

```
.background{ background-color: rgb(225,  
187, 160) }
```

This example shows the color as background, it is applied via the CSS property "background".

To optimize and compress your CSS code, you can use our [online CSS compressor and optimizer](#) based on csstidy. If you want to create a linear or radial gradient as background or border, check our [CSS Gradient Generator](#).

Hey! You found this booklet interesting? Support Converting Colors with the new Membership Option!

The pro membership hides all ads, plus gives you double the colors in the color bucket, and more awesome pro features!

[Learn more, Memberships starting at \\$2.50/m!](#)

**Follow me
on Twitter!**

@ConvertingColor