

Converting Colors

`RYB(226, 196, 197)`

Have a look what the booklet for RYB(226, 196, 197) contains.

RYB(226, 196, 197)	3
<i>Conversions</i>	4
<i>Details</i>	6
<i>Harmonies</i>	11
<i>Previews</i>	23
<i>Color Blindness Simulation</i>	26
<i>CSS Examples</i>	29

Color

R_YB(226, 196, 197)

Conversions

Conversions Part 1

Format	Color
Hex	E2C4C5
RGB	226, 196, 197
RGB Percent	89%, 77%, 77%
CMY	0.1137, 0.2314, 0.2275
CMYK	0.00, 0.13, 0.13, 0.11
HSL	358°, 34%, 83%
HSV	358°, 13%, 89%
XYZ	61.1820, 59.6798, 61.1180
YIQ	205.0840, 17.5590, 6.6710

Conversions

Conversions Part 2

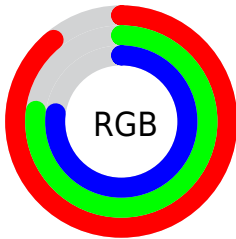
Format	Color
R _{YB}	226, 196, 197
Decimal	14861509
CIE _{Lab}	81.66, 10.75, 3.41
CIE _{LCh}	82, 11.278, 17.574
Yxy	59.6798, 0.3362, 0.3279
Android (android.graphics.Color)	4293051589 (0xFFE2C4C5)
YUV	205.0840, -3.9854, 18.3433
Hunter-Lab	77.2527, 6.1748, 7.1700

Details

The RYB color **226, 196, 197** is a light color, and the websafe version is hex **FFCCCC**. A complement of this color would be **196, 211, 226**, and the grayscale version is **205, 205, 205**.

A 20% lighter version of the original color is 255, 253, 254, and **170, 142, 143** is the 20% darker color. If you saturate the color by 10%, you get **226, 173, 175**, and if you desaturate by 10%, it is **226, 219, 219**.

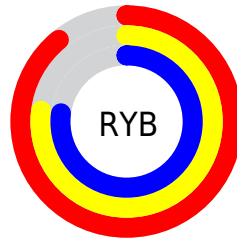
Distribution



Red (89%)

Green (77%)

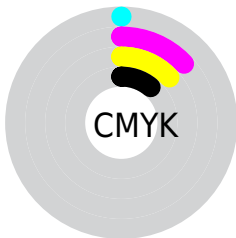
Blue (77%)



Red (89%)

Yellow (77%)

Blue (77%)

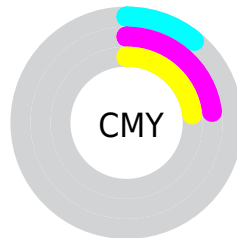


Cyan (0%)

Magenta (13%)

Yellow (13%)

Black (11%)



Cyan (11%)

Magenta (23%)

Yellow (23%)

Brightness & Saturation Gradients

These gradients show how the RYB color 226, 196, 197 changes by changing the brightness by 10 percent. The first figure shows a shift by +10% for each color and the second figure -10%.


Similar to the brightness gradients but the following saturation gradients show a change of the RYB color 226, 196, 197 by changing the saturation by 10% instead.


 226, 196, 197

255, 255, 255

 255, 253, 254

 226, 196, 197

 198, 169, 170

 170, 142, 143

 144, 117, 118

 118, 92, 93

 93, 68, 70

 69, 46, 47

 46, 25, 27

 28, 0, 0

 0, 0, 0

■ 226, 196, 197

■ 226, 196, 197

■ 226, 173, 175

■ 226, 219, 219

■ 226, 151, 153

■ 226, 234, 241

■ 226, 128, 131

■ 226, 241, 255

■ 226, 106, 110

■ 226, 83, 88

■ 226, 60, 66

■ 226, 38, 44

■ 226, 15, 22

■ 226, 0, 8

Harmonies

Analogous

The Analogous color harmony consists of three colors that are next to each other on the color wheel.



222, 196, 208



226, 196, 197



224, 202, 188

Triad

The Triadic color harmony groups three colors that are evenly spaced from another and form a triangle on the color wheel.



226, 196, 197



189, 207, 203



187, 199, 223

Complementary

The Complementary color scheme is a pair of colors which are on the opposite of each other on the color wheel.



226, 196, 197



196, 211, 226

Split Complementary

Split-complementary colors differ from the complementary color scheme. The scheme consists of three colors, the original color and two neighbors of the complement color.



179, 196, 218



226, 196, 197



182, 199, 209

Square

The Square scheme is like the rectangle color scheme, but the four colors are evenly spaced on the color wheel.



226, 196, 197



184, 205, 183



177, 193, 209



200, 202, 223

Rectangle

The Rectangle color scheme consists of four colors that form a rectangle on the color wheel.



226, 196, 197



219, 213, 184



177, 193, 209



184, 198, 222

Sweetspot

The Sweet Spot groups the original color and five complimentary colors.



226, 196, 197



255, 245, 245



225, 196, 226



128, 121, 121



0, 0, 0



128, 128, 128

Same Dimension

The Same Dimension uses a secret algorithm to generate beautiful new colors.



226, 196, 197



255, 214, 216



226, 222, 196



112, 101, 101



176, 0, 6



48, 0, 2

Inverse Universe

The Inverse Universe completely reimagines the original color for something new.



226, 196, 197



255, 214, 216



196, 206, 226



112, 101, 101



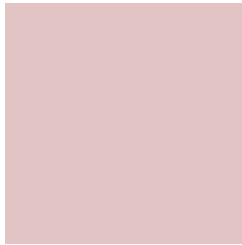
176, 0, 6



48, 0, 2

Previews

White Background



This preview shows how the RYB color 226, 196, 197 looks on a white background.

Color Contrast Check

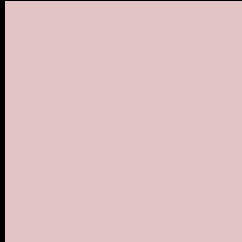
Large Text (above 18pt) WCAG AA × Fail

Any Text WCAG AA × Fail

Large Text (above 18pt) WCAG AAA × Fail

Any Text WCAG AAA × Fail

Black Background



This preview shows how the RYB color 226, 196, 197 looks on a black background.

Color Contrast Check

Large Text (above 18pt) WCAG AA ✓ Pass

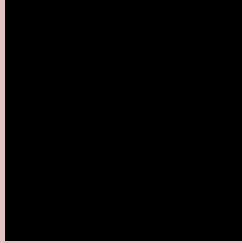
Any Text WCAG AA ✓ Pass

Large Text (above 18pt) WCAG AAA ✓ Pass

Any Text WCAG AAA ✓ Pass

If you want to check with other color combinations, try the [Color Contrast Checker](#).

RGB 226, 196, 197 Background



This preview shows how black text looks on a background with the RGB color 226, 196, 197.



This preview shows how white text looks on a background with the RGB color 226, 196, 197.

Color Blindness Simulation

Color vision deficiency is a very complex topic, and I could not describe the different causes any better than Wikipedia does, so if you want to learn more, you should check out their [article about color blindness](#).

Dichromacy



Original Color
226, 196, 197

Protanopia
207, 203, 200

Deuteranopia
225, 196, 197



Tritanopia
228, 194, 209

Trichromacy



Original Color

226, 196, 197

Protanomaly

214, 200, 199

Deuteranomaly

225, 196, 197

Tritanomaly

227, 195, 205

Monochromacy



Original Color

226, 196, 197

Achromatopsia

205, 205, 205

Achromatomaly

213, 202, 202

CSS Examples

Text

The CSS property to change the color of the text to RYB 226, 196, 197 is called "color". The color property can be set on classes, ids or directly on the HTML element.

This example shows how text in the color rgb(226, 196, 197) looks like.

```
.text, #text, p{  
    color:rgb(226, 196, 197)  
}
```

If you want to add a text shadow in that color use the text-shadow property, you can generate a text shadow directly with our [CSS Text Shadow Generator](#).

Here you see how black text with a 4 pixel rgb(226, 196, 197) colored shadow looks like.

```
.shadow{ text-shadow: 4px 4px 2px rgb(226, 196, 197) }
```

Border

The CSS property to change the border of an element to RYB 226, 196, 197 is called "border". The border property can be set on classes, ids or directly on the HTML element.

This example shows the color as border, it can be applied via the CSS property "border" or "border-color".

```
.border, #border, table{ border:4px solid rgb(226, 196, 197) }
```

If only the border color should be changed use the property `border-color`.

```
.border{ border-color:rgb(226, 196, 197) }
```

If you want to add a box shadow in that color use:

Here you see how a box with a 4 pixel `rgb(226, 196, 197)` colored shadow looks like.

```
.boxshadow{ -moz-box-shadow:4px 4px 4px 4px rgb(226, 196, 197); -webkit-box-shadow:4px 4px 4px 4px rgb(226, 196, 197); box-shadow:4px 4px 4px 4px rgb(226, 196, 197) }
```

Background

The CSS property to change the background color of an element to RYB 226, 196, 197 is called "background". The background property can be set on classes, ids or directly on the HTML element.

```
.background, #background, body{  
background: rgb(226, 196, 197) }
```

If only the background color should be changed can be used:

```
.background{ background-color: rgb(226,  
196, 197) }
```

This example shows the color as background, it is applied via the CSS property "background".

To optimize and compress your CSS code, you can use our [online CSS compressor and optimizer](#) based on csstidy. If you want to create a linear or radial gradient as background or border, check our [CSS Gradient Generator](#).

Hey! You found this booklet interesting? Support Converting Colors with the new Membership Option!

The pro membership hides all ads, plus gives you double the colors in the color bucket, and more awesome pro features!

[Learn more, Memberships starting at \\$2.50/m!](#)

**Follow me
on Twitter!**

@ConvertingColor