

Converting Colors

`RYB(226, 198, 203)`

Have a look what the booklet for
RYB(226, 198, 203) contains.

RYB(226, 198, 203)	3
<i>Conversions</i>	4
<i>Details</i>	6
<i>Harmonies</i>	11
<i>Previews</i>	23
<i>Color Blindness Simulation</i>	26
<i>CSS Examples</i>	29

Color

R_YB(226, 198, 203)

Conversions

Conversions Part 1

Format	Color
Hex	E2C6CB
RGB	226, 198, 203
RGB Percent	89%, 78%, 80%
CMY	0.1137, 0.2235, 0.2039
CMYK	0.00, 0.12, 0.10, 0.11
HSL	349°, 33%, 83%
HSV	349°, 12%, 89%
XYZ	62.3376, 60.8687, 64.9632
YIQ	206.9420, 15.0830, 7.4910

Conversions

Conversions Part 2

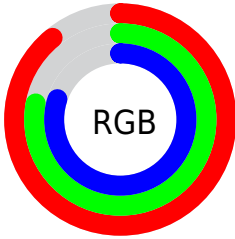
Format	Color
R _Y B	226, 198, 203
Decimal	14862027
CIE Lab	82.31, 10.68, 1.13
CIE LCh	82, 10.735, 6.023
Yxy	60.8687, 0.3313, 0.3235
Android (android.graphics.Color)	4293052107 (0xFFE2C6CB)
YUV	206.9420, -1.9434, 16.7139
Hunter-Lab	78.0184, 6.0914, 5.2442

Details

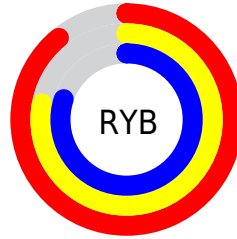
The RYB color **226, 198, 203** is a light color, and the websafe version is hex **FFCCCC**. A complement of this color would be **198, 213, 226**, and the grayscale version is **207, 207, 207**.

A 20% lighter version of the original color is **255, 255, 255**, and **170, 144, 149** is the 20% darker color. If you saturate the color by 10%, you get **226, 175, 184**, and if you desaturate by 10%, it is **226, 221, 222**.

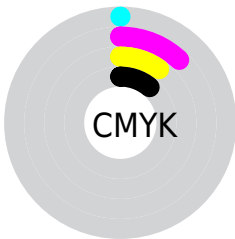
Distribution



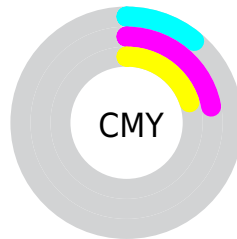
- Red (89%)
- Green (78%)
- Blue (80%)



- Red (89%)
- Yellow (78%)
- Blue (80%)



- Cyan (0%)
- Magenta (12%)
- Yellow (10%)
- Black (11%)



- Cyan (11%)
- Magenta (22%)
- Yellow (20%)

Brightness & Saturation Gradients

These gradients show how the RYB color 226, 198, 203 changes by changing the brightness by 10 percent. The first figure shows a shift by +10% for each color and the second figure -10%.

Similar to the brightness gradients but the following saturation gradients show a change of the RYB color 226, 198, 203 by changing the saturation by 10% instead.

■ 226, 198, 203

255, 255, 255

■ 226, 198, 203

■ 198, 171, 176

■ 170, 144, 149

■ 144, 118, 123

■ 118, 94, 98

■ 93, 70, 75

■ 69, 48, 52


■ 47, 27, 31

■ 28, 0, 6

■ 0, 0, 0

 226, 198, 203

 226, 198, 203

 226, 175, 184


 226, 221, 222

 226, 153, 166

 226, 235, 243

 226, 130, 147

 226, 241, 255

 226, 108, 129

 226, 85, 110

 226, 62, 92

 226, 40, 73

 226, 17, 54

 226, 0, 40

Harmonies

Analogous

The Analogous color harmony consists of three colors that are next to each other on the color wheel.



220, 199, 213



226, 198, 203



226, 200, 193

Triad

The Triadic color harmony groups three colors that are evenly spaced from another and form a triangle on the color wheel.



226, 198, 203



188, 208, 196



186, 200, 223

Complementary

The Complementary color scheme is a pair of colors which are on the opposite of each other on the color wheel.



226, 198, 203



198, 213, 226

Split Complementary

Split-complementary colors differ from the complementary color scheme. The scheme consists of three colors, the original color and two neighbors of the complement color.



180, 196, 216



226, 198, 203



189, 205, 210

Square

The Square scheme is like the rectangle color scheme, but the four colors are evenly spaced on the color wheel.



226, 198, 203



193, 211, 185



181, 197, 211



197, 203, 225

Rectangle

The Rectangle color scheme consists of four colors that form a rectangle on the color wheel.



226, 198, 203



223, 206, 188



181, 197, 211



183, 198, 221

Sweetspot

The Sweet Spot groups the original color and five complimentary colors.



226, 198, 203



255, 245, 247



221, 198, 226



128, 121, 122



0, 0, 0



128, 128, 128

Same Dimension

The Same Dimension uses a secret algorithm to generate beautiful new colors.



226, 198, 203



255, 217, 224



226, 211, 198



112, 101, 103



176, 0, 31



48, 0, 9

Inverse Universe

The Inverse Universe completely reimagines the original color for something new.



226, 198, 203



255, 217, 224



198, 209, 226



112, 101, 103



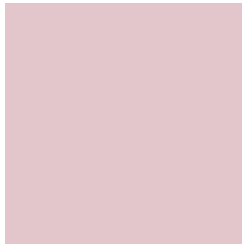
176, 0, 31



48, 0, 9

Previews

White Background



This preview shows how the RYB color 226, 198, 203 looks on a white background.

Color Contrast Check

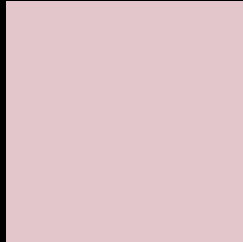
Large Text (above 18pt) WCAG AA × Fail

Any Text WCAG AA × Fail

Large Text (above 18pt) WCAG AAA × Fail

Any Text WCAG AAA × Fail

Black Background



This preview shows how the RYB color 226, 198, 203 looks on a black background.

Color Contrast Check

Large Text (above 18pt) WCAG AA ✓ Pass

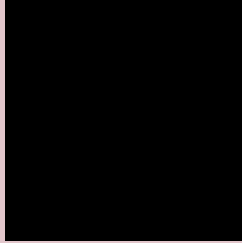
Any Text WCAG AA ✓ Pass

Large Text (above 18pt) WCAG AAA ✓ Pass

Any Text WCAG AAA ✓ Pass

If you want to check with other color combinations, try the [Color Contrast Checker](#).

R Y B 226, 198, 203 Background



This preview shows how black text looks on a background with the R Y B color 226, 198, 203.



This preview shows how white text looks on a background with the R Y B color 226, 198, 203.

Color Blindness Simulation

Color vision deficiency is a very complex topic, and I could not describe the different causes any better than Wikipedia does, so if you want to learn more, you should check out their [article about color blindness](#).

Dichromacy



Original Color


[226, 198, 203](#)

Protanopia

[208, 204, 206](#)

Deuteranopia

[225, 198, 203](#)



Tritanopia
227, 197, 212

Trichromacy



Original Color
226, 198, 203

Protanomaly
215, 202, 205

Deuteranomaly
225, 198, 203

Tritanomaly
227, 197, 209

Monochromacy



Original Color
226, 198, 203

Achromatopsia
207, 207, 207

Achromatomaly
214, 204, 206

CSS Examples

Text

The CSS property to change the color of the text to RYB 226, 198, 203 is called "color". The color property can be set on classes, ids or directly on the HTML element.

This example shows how text in the color rgb(226, 198, 203) looks like.

```
.text, #text, p{  
    color:rgb(226, 198, 203)  
}
```

If you want to add a text shadow in that color use the text-shadow property, you can generate a text shadow directly with our [CSS Text Shadow Generator](#).

Here you see how black text with a 4 pixel rgb(226, 198, 203) colored shadow looks like.

```
.shadow{ text-shadow: 4px 4px 2px rgb(226, 198, 203) }
```

Border

The CSS property to change the border of an element to RYB 226, 198, 203 is called "border". The border property can be set on classes, ids or directly on the HTML element.

This example shows the color as border, it can be applied via the CSS property "border" or "border-color".

```
.border, #border, table{ border:4px solid rgb(226, 198, 203) }
```

If only the border color should be changed use the property `border-color`.

```
.border{ border-color:rgb(226, 198, 203) }
```

If you want to add a box shadow in that color use:

Here you see how a box with a 4 pixel `rgb(226, 198, 203)` colored shadow looks like.

```
.boxshadow{ -moz-box-shadow:4px 4px 4px  
4px rgb(226, 198, 203); -webkit-box-  
shadow:4px 4px 4px 4px rgb(226, 198, 203);  
box-shadow:4px 4px 4px 4px rgb(226, 198,  
203) }
```

Background

The CSS property to change the background color of an element to RYB 226, 198, 203 is called "background". The background property can be set on classes, ids or directly on the HTML element.

```
.background, #background, body{  
background: rgb(226, 198, 203) }
```

If only the background color should be changed can be used:

```
.background{ background-color: rgb(226,  
198, 203) }
```

This example shows the color as background, it is applied via the CSS property "background".

To optimize and compress your CSS code, you can use our [online CSS compressor and optimizer](#) based on csstidy. If you want to create a linear or radial gradient as background or border, check our [CSS Gradient Generator](#).

Hey! You found this booklet interesting? Support Converting Colors with the new Membership Option!

The pro membership hides all ads, plus gives you double the colors in the color bucket, and more awesome pro features!

[Learn more, Memberships starting at \\$2.50/m!](#)

**Follow me
on Twitter!**

@ConvertingColor