

Converting Colors

`RYB(227, 213, 171)`

Have a look what the booklet for
RYB(227, 213, 171) contains.

RYB(227, 213, 171)	3
<i>Conversions</i>	4
<i>Details</i>	6
<i>Harmonies</i>	11
<i>Previews</i>	23
<i>Color Blindness Simulation</i>	26
<i>CSS Examples</i>	29

Color

R_YB(227, 213, 171)

Conversions

Conversions Part 1

Format	Color
Hex	E3C3AB
RGB	227, 195, 171
RGB Percent	89%, 76%, 67%
CMY	0.1098, 0.2353, 0.3294
CMYK	0.00, 0.14, 0.25, 0.11
HSL	26°, 50%, 78%
HSV	26°, 25%, 89%
XYZ	58.5443, 58.3014, 46.6957
YIQ	201.8320, 26.7760, -0.6800

Conversions

Conversions Part 2

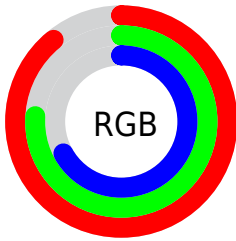
Format	Color
R _Y B	227, 213, 171
Decimal	14926763
CIE Lab	80.91, 7.72, 16.26
CIE LCh	81, 17.997, 64.590
Yxy	58.3014, 0.3580, 0.3565
Android (android.graphics.Color)	4293116843 (0xFFE3C3AB)
YUV	201.8320, -15.2002, 22.0723
Hunter-Lab	76.3553, 3.2404, 17.1894

Details

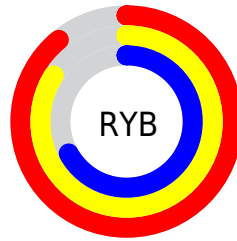
The RYB color **227, 213, 171** is a light color, and the websafe version is hex **FFCCCC**. A complement of this color would be **171, 191, 227**, and the grayscale version is **202, 202, 202**.

A 20% lighter version of the original color is **229, 255, 226**, and **171, 157, 119** is the 20% darker color. If you saturate the color by 10%, you get **227, 208, 148**, and if you desaturate by 10%, it is **227, 218, 194**.

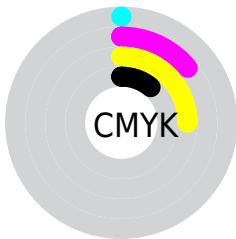
Distribution



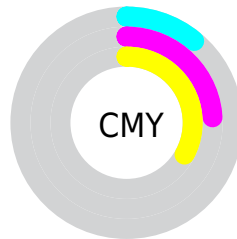
- Red (89%)
- Green (76%)
- Blue (67%)



- Red (89%)
- Yellow (84%)
- Blue (67%)



- Cyan (0%)
- Magenta (14%)
- Yellow (25%)
- Black (11%)



- Cyan (11%)
- Magenta (24%)
- Yellow (33%)

Brightness & Saturation Gradients

These gradients show how the RYB color 227, 213, 171 changes by changing the brightness by 10 percent. The first figure shows a shift by +10% for each color and the second figure -10%.

Similar to the brightness gradients but the following saturation gradients show a change of the RYB color 227, 213, 171 by changing the saturation by 10% instead.


 227, 213, 171


255, 255, 255


 229, 255, 226

 227, 213, 171

 199, 187, 144

 171, 157, 119

 144, 133, 94

 118, 107, 70

 92, 85, 48

 68, 62, 27

 36, 45, 0

 21, 0, 0

 0, 0, 0

■ 227, 213, 171

■ 227, 213, 171

■ 227, 208, 148

■ 227, 218, 194

■ 227, 201, 126

■ 227, 225, 216

■ 227, 196, 103

■ 227, 231, 239

■ 227, 190, 80

■ 227, 239, 255

■ 227, 185, 57

■ 227, 241, 255

■ 227, 178, 35

■ 227, 173, 12

■ 227, 169, 0

Harmonies

Analogous

The Analogous color harmony consists of three colors that are next to each other on the color wheel.



236, 193, 182



227, 213, 171



182, 212, 167

Triad

The Triadic color harmony groups three colors that are evenly spaced from another and form a triangle on the color wheel.



227, 213, 171



160, 188, 211



207, 196, 229

Complementary

The Complementary color scheme is a pair of colors which are on the opposite of each other on the color wheel.



227, 213, 171



171, 191, 227

Split Complementary

Split-complementary colors differ from the complementary color scheme. The scheme consists of three colors, the original color and two neighbors of the complement color.



186, 197, 234



227, 213, 171



157, 186, 219

Square

The Square scheme is like the rectangle color scheme, but the four colors are evenly spaced on the color wheel.



227, 213, 171



174, 200, 209



166, 191, 231



225, 191, 216

Rectangle

The Rectangle color scheme consists of four colors that form a rectangle on the color wheel.



227, 213, 171



170, 204, 175



166, 191, 231



200, 198, 231

Sweetspot

The Sweet Spot groups the original color and five complimentary colors.



227, 213, 171



255, 251, 237



227, 171, 204



128, 126, 117



0, 0, 0



128, 128, 128

Same Dimension

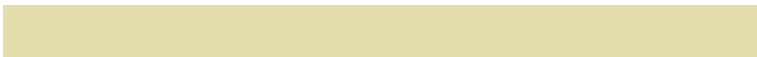
The Same Dimension uses a secret algorithm to generate beautiful new colors.



227, 213, 171



255, 234, 179



176, 227, 171



115, 112, 103



179, 135, 0



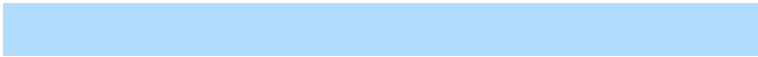
51, 39, 0

Inverse Universe

The Inverse Universe completely reimagines the original color for something new.



171, 191, 227



179, 206, 255



171, 176, 227



103, 107, 115



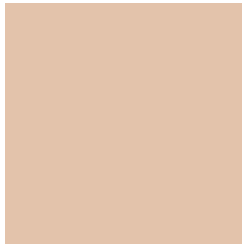
0, 65, 179



0, 18, 51

Previews

White Background



This preview shows how the RYB color 227, 213, 171 looks on a white background.

Color Contrast Check

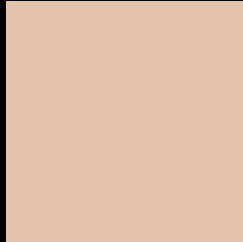
Large Text (above 18pt) WCAG AA × Fail

Any Text WCAG AA × Fail

Large Text (above 18pt) WCAG AAA × Fail

Any Text WCAG AAA × Fail

Black Background



This preview shows how the RYB color 227, 213, 171 looks on a black background.

Color Contrast Check

Large Text (above 18pt) WCAG AA ✓ Pass

Any Text WCAG AA ✓ Pass

Large Text (above 18pt) WCAG AAA ✓ Pass

Any Text WCAG AAA ✓ Pass

If you want to check with other color combinations, try the [Color Contrast Checker](#).

R Y B 227, 213, 171 Background



This preview shows how black text looks on a background with the RYB color 227, 213, 171.





This preview shows how white text looks on a background with the RYB color 227, 213, 171.

Color Blindness Simulation

Color vision deficiency is a very complex topic, and I could not describe the different causes any better than Wikipedia does, so if you want to learn more, you should check out their [article about color blindness](#).

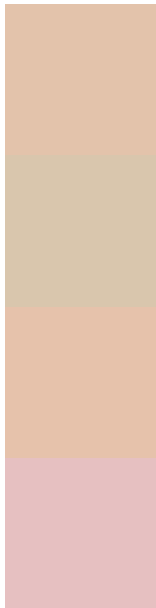
Dichromacy

	Original Color 227, 213, 171
	Protanopia 190, 211, 174
	Deuteranopia 231, 206, 171



Tritanopia
231, 190, 205

Trichromacy



Original Color
227, 213, 171

Protanomaly
206, 217, 173

Deuteranomaly
230, 209, 171

Tritanomaly
230, 192, 193

Monochromacy



Original Color
227, 213, 171

Achromatopsia
202, 202, 202

Achromatomaly
211, 204, 191

CSS Examples

Text

The CSS property to change the color of the text to RYB 227, 213, 171 is called "color". The color property can be set on classes, ids or directly on the HTML element.

This example shows how text in the color `rgb(227, 195, 171)` looks like.

```
.text, #text, p{  
    color:rgb(227, 195, 171)  
}
```

If you want to add a text shadow in that color use the text-shadow property, you can generate a text shadow directly with our [CSS Text Shadow Generator](#).

Here you see how black text with a 4 pixel rgb(227, 195, 171) colored shadow looks like.

```
.shadow{ text-shadow: 4px 4px 2px rgb(227, 195, 171) }
```

Border

The CSS property to change the border of an element to RYB 227, 213, 171 is called "border". The border property can be set on classes, ids or directly on the HTML element.

This example shows the color as border, it can be applied via the CSS property "border" or "border-color".

```
.border, #border, table{ border:4px solid rgb(227, 195, 171) }
```

If only the border color should be changed use the property `border-color`.

```
.border{ border-color:rgb(227, 195, 171) }
```

If you want to add a box shadow in that color use:

Here you see how a box with a 4 pixel `rgb(227, 195, 171)` colored shadow looks like.

```
.boxshadow{ -moz-box-shadow:4px 4px 4px 4px rgb(227, 195, 171); -webkit-box-shadow:4px 4px 4px 4px rgb(227, 195, 171); box-shadow:4px 4px 4px 4px rgb(227, 195, 171) }
```

Background

The CSS property to change the background color of an element to RGB 227, 195, 171 is called "background". The background property can be set on classes, ids or directly on the HTML element.

```
.background, #background, body{  
background: rgb(227, 195, 171) }
```

If only the background color should be changed can be used:

```
.background{ background-color: rgb(227,  
195, 171) }
```

This example shows the color as background, it is applied via the CSS property "background".

To optimize and compress your CSS code, you can use our [online CSS compressor and optimizer](#) based on csstidy. If you want to create a linear or radial gradient as background or border, check our [CSS Gradient Generator](#).

Hey! You found this booklet interesting? Support Converting Colors with the new Membership Option!

The pro membership hides all ads, plus gives you double the colors in the color bucket, and more awesome pro features!

[Learn more, Memberships starting at \\$2.50/m!](#)

**Follow me
on Twitter!**

@ConvertingColor