

Converting Colors

`RYB(227, 92, 123)`

Have a look what the booklet for
RYB(227, 92, 123) contains.

RYB(227, 92, 123)	3
<i>Conversions</i>	4
<i>Details</i>	6
<i>Harmonies</i>	11
<i>Previews</i>	23
<i>Color Blindness Simulation</i>	26
<i>CSS Examples</i>	29

Color

`RYB(227, 92, 123)`

Conversions

Conversions Part 1

Format	Color
Hex	E35C7B
RGB	227, 92, 123
RGB Percent	89%, 36%, 48%
CMY	0.1098, 0.6392, 0.5176
CMYK	0.00, 0.59, 0.46, 0.11
HSL	346°, 71%, 63%
HSV	346°, 59%, 89%
XYZ	39.0809, 25.4152, 21.5847
YIQ	135.8990, 70.5090, 38.2610

Conversions

Conversions Part 2

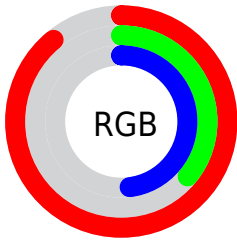
Format	Color
R_{YB}	227, 92, 123
Decimal	14900347
CIE _{Lab}	57.48, 55.09, 10.07
CIE _{LCh}	57, 56.000, 10.359
Yxy	25.4152, 0.4540, 0.2952
Android (android.graphics.Color)	4293090427 (0xFFE35C7B)
YUV	135.8990, -6.3592, 79.8956
Hunter-Lab	50.4135, 50.1505, 9.9042

Details

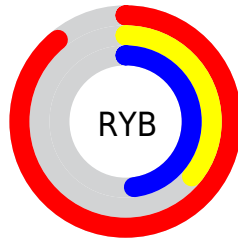
The RYB color **227, 92, 123** is a dark color, and the websafe version is hex **FF6699**. The color can be described as middle muted rose. A complement of this color would be **92, 168, 227**, and the grayscale version is **136, 136, 136**.

A 20% lighter version of the original color is **255, 147, 175**, and **167, 33, 75** is the 20% darker color. If you saturate the color by 10%, you get **227, 69, 106**, and if you desaturate by 10%, it is **227, 115, 140**.

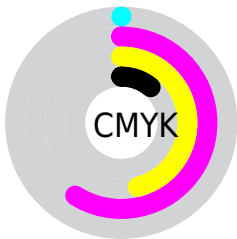
Distribution



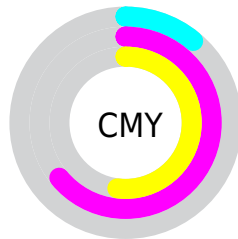
- Red (89%)
- Green (36%)
- Blue (48%)



- Red (89%)
- Yellow (36%)
- Blue (48%)



- Cyan (0%)
- Magenta (59%)
- Yellow (46%)
- Black (11%)



- Cyan (11%)
- Magenta (64%)
- Yellow (52%)

Brightness & Saturation Gradients

These gradients show how the RYB color 227, 92, 123 changes by changing the brightness by 10 percent. The first figure shows a shift by +10% for each color and the second figure -10%.

Similar to the brightness gradients but the following saturation gradients show a change of the RYB color 227, 92, 123 by changing the saturation by 10% instead.



227, 92, 123



227, 92, 123

255, 255, 255



197, 64, 98



255, 147, 175



167, 33, 75



255, 175, 203



137, 0, 52



255, 204, 231



108, 0, 31



255, 233, 255



80, 0, 7



53, 0, 2



3, 0, 0



0, 0, 0



227, 92, 123



227, 92, 123

■ 227, 69, 106

■ 227, 115, 140

■ 227, 47, 88

■ 227, 137, 158

■ 227, 24, 71

■ 227, 160, 175

■ 227, 1, 53

■ 227, 183, 193

■ 227, 0, 52

■ 227, 206, 210

■ 227, 228, 228

■ 227, 241, 251

■ 227, 241, 255

Harmonies

Analogous

The Analogous color harmony consists of three colors that are next to each other on the color wheel.



210, 98, 172



227, 92, 123



218, 110, 77

Triad

The Triadic color harmony groups three colors that are evenly spaced from another and form a triangle on the color wheel.



227, 92, 123



58, 153, 117



0, 92, 230

Complementary

The Complementary color scheme is a pair of colors which are on the opposite of each other on the color wheel.



227, 92, 123



92, 168, 227

Split Complementary

Split-complementary colors differ from the complementary color scheme. The scheme consists of three colors, the original color and two neighbors of the complement color.



0, 89, 200



227, 92, 123



0, 96, 159

Square

The Square scheme is like the rectangle color scheme, but the four colors are evenly spaced on the color wheel.



227, 92, 123



37, 148, 30



0, 83, 162



70, 118, 235

Rectangle

The Rectangle color scheme consists of four colors that form a rectangle on the color wheel.



227, 92, 123



201, 167, 52



0, 83, 162



0, 91, 222

Sweetspot

The Sweet Spot groups the original color and five complimentary colors.



227, 92, 123



255, 209, 220



195, 92, 227



128, 99, 106



0, 0, 0



128, 128, 128

Same Dimension

The Same Dimension uses a secret algorithm to generate beautiful new colors.



227, 92, 123



255, 74, 116



227, 141, 92



115, 103, 106



179, 0, 41



51, 0, 12

Inverse Universe

The Inverse Universe completely reimagines the original color for something new.



227, 92, 123



255, 74, 116



92, 149, 227



115, 103, 106



179, 0, 41



51, 0, 12

Previews

White Background



This preview shows how the RYB color 227, 92, 123 looks on a white background.

Color Contrast Check

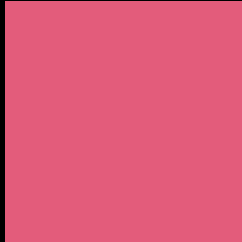
Large Text (above 18pt) WCAG AA ✓ Pass

Any Text WCAG AA × Fail

Large Text (above 18pt) WCAG AAA × Fail

Any Text WCAG AAA × Fail

Black Background



This preview shows how the RYB color 227, 92, 123 looks on a black background.

Color Contrast Check

Large Text (above 18pt) WCAG AA ✓ Pass

Any Text WCAG AA ✓ Pass

Large Text (above 18pt) WCAG AAA ✓ Pass

Any Text WCAG AAA × Fail

If you want to check with other color combinations, try the [Color Contrast Checker](#).

RYB 227, 92, 123 Background



This preview shows how black text looks on a background with the RYB color 227, 92, 123.

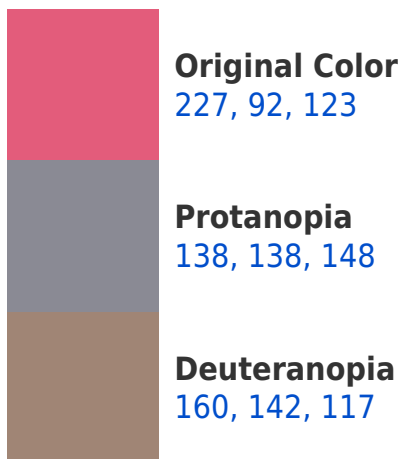


This preview shows how white text looks on a background with the RYB color 227, 92, 123.

Color Blindness Simulation

Color vision deficiency is a very complex topic, and I could not describe the different causes any better than Wikipedia does, so if you want to learn more, you should check out their [article about color blindness](#).

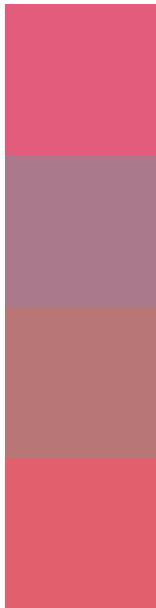
Dichromacy





Tritanopia
226, 96, 102

Trichromacy



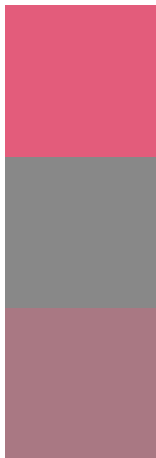
Original Color
227, 92, 123

Protanomaly
170, 121, 139

Deuteranomaly
184, 118, 119

Tritanomaly
226, 95, 110

Monochromacy



Original Color
227, 92, 123

Achromatopsia
136, 136, 136

Achromatomaly
169, 120, 131

CSS Examples

Text

The CSS property to change the color of the text to RYB 227, 92, 123 is called "color". The color property can be set on classes, ids or directly on the HTML element.

This example shows how text in the color `rgb(227, 92, 123)` looks like.

```
.text, #text, p{  
    color:rgb(227, 92, 123)  
}
```

If you want to add a text shadow in that color use the text-shadow property, you can generate a text shadow directly with our [CSS Text Shadow Generator](#).

Here you see how black text with a 4 pixel rgb(227, 92, 123) colored shadow looks like.

```
.shadow{ text-shadow: 4px 4px 2px rgb(227, 92, 123) }
```

Border

The CSS property to change the border of an element to RYB 227, 92, 123 is called "border". The border property can be set on classes, ids or directly on the HTML element.

This example shows the color as border, it can be applied via the CSS property "border" or "border-color".

```
.border, #border, table{ border:4px solid rgb(227, 92, 123) }
```

If only the border color should be changed use the property `border-color`.

```
.border{ border-color:rgb(227, 92, 123) }
```

If you want to add a box shadow in that color use:

Here you see how a box with a 4 pixel `rgb(227, 92, 123)` colored shadow looks like.

```
.boxshadow{ -moz-box-shadow:4px 4px 4px  
4px rgb(227, 92, 123); -webkit-box-  
shadow:4px 4px 4px 4px rgb(227, 92, 123);  
box-shadow:4px 4px 4px 4px rgb(227, 92,  
123) }
```

Background

The CSS property to change the background color of an element to RGB 227, 92, 123 is called "background". The background property can be set on classes, ids or directly on the HTML element.

```
.background, #background, body{  
background: rgb(227, 92, 123) }
```

If only the background color should be changed can be used:

```
.background{ background-color: rgb(227, 92,  
123) }
```

This example shows the color as background, it is applied via the CSS property "background".

To optimize and compress your CSS code, you can use our [online CSS compressor and optimizer](#) based on csstidy. If you want to create a linear or radial gradient as background or border, check our [CSS Gradient Generator](#).

Hey! You found this booklet interesting? Support Converting Colors with the new Membership Option!

The pro membership hides all ads, plus gives you double the colors in the color bucket, and more awesome pro features!

[Learn more, Memberships starting at \\$2.50/m!](#)

**Follow me
on Twitter!**

@ConvertingColor