

Converting Colors

`RYB(228, 139, 163)`

Have a look what the booklet for
RYB(228, 139, 163) contains.

RYB(228, 139, 163)	3
<i>Conversions</i>	4
<i>Details</i>	6
<i>Harmonies</i>	11
<i>Previews</i>	23
<i>Color Blindness Simulation</i>	26
<i>CSS Examples</i>	29

Color

R_YB(228, 139, 163)

Conversions

Conversions Part 1

Format	Color
Hex	E48BA3
RGB	228, 139, 163
RGB Percent	89%, 55%, 64%
CMY	0.1059, 0.4549, 0.3608
CMYK	0.00, 0.39, 0.29, 0.11
HSL	344°, 62%, 72%
HSV	344°, 39%, 89%
XYZ	47.8384, 37.6036, 39.3872
YIQ	168.3470, 45.3400, 26.3320

Conversions

Conversions Part 2

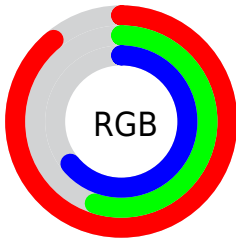
Format	Color
R _Y B	228, 139, 163
Decimal	14977955
CIE Lab	67.73, 36.83, 1.85
CIE LCh	68, 36.877, 2.880
Yxy	37.6036, 0.3832, 0.3012
Android (android.graphics.Color)	4293168035 (0xFFE48BA3)
YUV	168.3470, -2.6361, 52.3157
Hunter-Lab	61.3217, 31.9386, 4.8430

Details

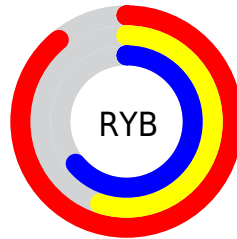
The RYB color **228, 139, 163** is a light color, and the websafe version is hex **FF99CC**. A complement of this color would be **139, 190, 228**, and the grayscale version is **168, 168, 168**.

A 20% lighter version of the original color is **255, 194, 218**, and **170, 87, 111** is the 20% darker color. If you saturate the color by 10%, you get **228, 116, 146**, and if you desaturate by 10%, it is **228, 162, 180**.

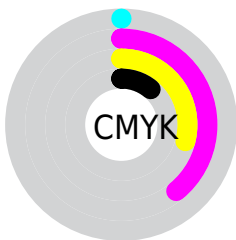
Distribution



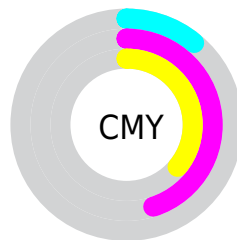
- Red (89%)
- Green (55%)
- Blue (64%)



- Red (89%)
- Yellow (55%)
- Blue (64%)



- Cyan (0%)
- Magenta (39%)
- Yellow (29%)
- Black (11%)



- Cyan (11%)
- Magenta (45%)
- Yellow (36%)

Brightness & Saturation Gradients

These gradients show how the RYB color 228, 139, 163 changes by changing the brightness by 10 percent. The first figure shows a shift by +10% for each color and the second figure -10%.

Similar to the brightness gradients but the following saturation gradients show a change of the RYB color 228, 139, 163 by changing the saturation by 10% instead.

 228, 139, 163

255, 255, 255

 255, 194, 218

 255, 222, 246


 255, 251, 255

 228, 139, 163

 199, 113, 137

 170, 87, 111

 143, 62, 87

 115, 37, 64


 89, 8, 42

 63, 0, 22

 40, 0, 1

 0, 0, 0

 228, 139, 163

 228, 139, 163

■ 228, 116, 146

■ 228, 162, 180

■ 228, 93, 130

■ 228, 185, 196

■ 228, 71, 113

■ 228, 207, 213

■ 228, 48, 96

■ 228, 229, 230

■ 228, 25, 80

■ 228, 243, 253

■ 228, 2, 63

■ 228, 242, 255

■ 228, 0, 61

Harmonies

Analogous

The Analogous color harmony consists of three colors that are next to each other on the color wheel.



210, 144, 196



228, 139, 163



228, 145, 131

Triad

The Triadic color harmony groups three colors that are evenly spaced from another and form a triangle on the color wheel.



228, 139, 163



108, 174, 133



62, 129, 223

Complementary

The Complementary color scheme is a pair of colors which are on the opposite of each other on the color wheel.



228, 139, 163



139, 190, 228

Split Complementary

Split-complementary colors differ from the complementary color scheme. The scheme consists of three colors, the original color and two neighbors of the complement color.



17, 104, 200



228, 139, 163



108, 161, 180

Square

The Square scheme is like the rectangle color scheme, but the four colors are evenly spaced on the color wheel.



228, 139, 163



124, 184, 98



62, 127, 183



122, 154, 231

Rectangle

The Rectangle color scheme consists of four colors that form a rectangle on the color wheel.



228, 139, 163



219, 168, 113



62, 127, 183



42, 119, 217

Sweetspot

The Sweet Spot groups the original color and five complimentary colors.



228, 139, 163



255, 224, 233



203, 139, 228



128, 110, 114



0, 0, 0



128, 128, 128

Same Dimension

The Same Dimension uses a secret algorithm to generate beautiful new colors.



228, 139, 163



255, 135, 167



228, 163, 139



115, 103, 106



179, 0, 48



51, 0, 14

Inverse Universe

The Inverse Universe completely reimagines the original color for something new.



228, 139, 163



255, 135, 167



139, 178, 228



115, 103, 106



179, 0, 48



51, 0, 14

Previews

White Background



This preview shows how the RYB color 228, 139, 163 looks on a white background.

Color Contrast Check

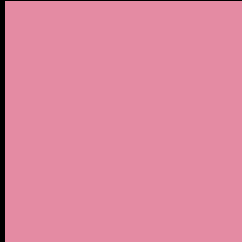
Large Text (above 18pt) WCAG AA × Fail

Any Text WCAG AA × Fail

Large Text (above 18pt) WCAG AAA × Fail

Any Text WCAG AAA × Fail

Black Background



This preview shows how the RYB color 228, 139, 163 looks on a black background.

Color Contrast Check

Large Text (above 18pt) WCAG AA ✓ Pass

Any Text WCAG AA ✓ Pass

Large Text (above 18pt) WCAG AAA ✓ Pass

Any Text WCAG AAA ✓ Pass

If you want to check with other color combinations, try the [Color Contrast Checker](#).

RYB 228, 139, 163 Background



This preview shows how black text looks on a background with the RYB color 228, 139, 163.

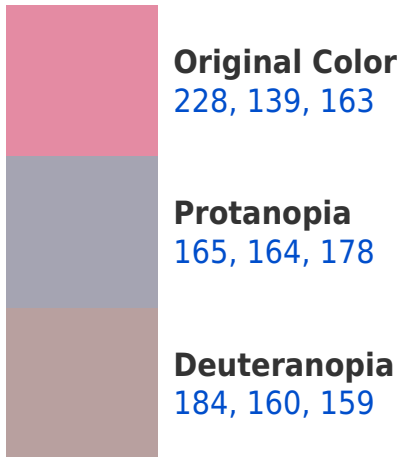



This preview shows how white text looks on a background with the RYB color 228, 139, 163.

Color Blindness Simulation

Color vision deficiency is a very complex topic, and I could not describe the different causes any better than Wikipedia does, so if you want to learn more, you should check out their [article about color blindness](#).

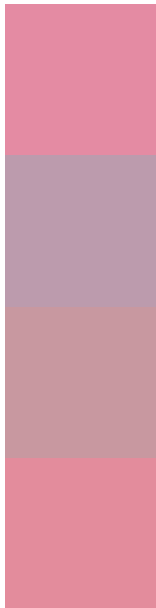
Dichromacy





Tritanopia
227, 141, 152

Trichromacy



Original Color
228, 139, 163

Protanomaly
188, 155, 173

Deuteranomaly
200, 152, 160

Tritanomaly
227, 140, 156

Monochromacy



Original Color
228, 139, 163

Achromatopsia
168, 168, 168

Achromatomaly
190, 157, 166

CSS Examples

Text

The CSS property to change the color of the text to RYB 228, 139, 163 is called "color". The color property can be set on classes, ids or directly on the HTML element.

This example shows how text in the color rgb(228, 139, 163) looks like.

```
.text, #text, p{  
    color:rgb(228, 139, 163)  
}
```

If you want to add a text shadow in that color use the text-shadow property, you can generate a text shadow directly with our [CSS Text Shadow Generator](#).

Here you see how black text with a 4 pixel rgb(228, 139, 163) colored shadow looks like.

```
.shadow{ text-shadow: 4px 4px 2px rgb(228, 139, 163) }
```

Border

The CSS property to change the border of an element to RYB 228, 139, 163 is called "border". The border property can be set on classes, ids or directly on the HTML element.

This example shows the color as border, it can be applied via the CSS property "border" or "border-color".

```
.border, #border, table{ border:4px solid rgb(228, 139, 163) }
```

If only the border color should be changed use the property `border-color`.

```
.border{ border-color:rgb(228, 139, 163) }
```

If you want to add a box shadow in that color use:

Here you see how a box with a 4 pixel `rgb(228, 139, 163)` colored shadow looks like.

```
.boxshadow{ -moz-box-shadow:4px 4px 4px  
4px rgb(228, 139, 163); -webkit-box-  
shadow:4px 4px 4px 4px rgb(228, 139, 163);  
box-shadow:4px 4px 4px 4px rgb(228, 139,  
163) }
```

Background

The CSS property to change the background color of an element to RGB 228, 139, 163 is called "background". The background property can be set on classes, ids or directly on the HTML element.

```
.background, #background, body{  
background: rgb(228, 139, 163) }
```

If only the background color should be changed can be used:

```
.background{ background-color: rgb(228,  
139, 163) }
```

This example shows the color as background, it is applied via the CSS property "background".

To optimize and compress your CSS code, you can use our [online CSS compressor and optimizer](#) based on csstidy. If you want to create a linear or radial gradient as background or border, check our [CSS Gradient Generator](#).

Hey! You found this booklet interesting? Support Converting Colors with the new Membership Option!

The pro membership hides all ads, plus gives you double the colors in the color bucket, and more awesome pro features!

[Learn more, Memberships starting at \\$2.50/m!](#)

**Follow me
on Twitter!**

@ConvertingColor