

Converting Colors

`RYB(228, 207, 198)`

Have a look what the booklet for
RYB(228, 207, 198) contains.

RYB(228, 207, 198)	3
<i>Conversions</i>	4
<i>Details</i>	6
<i>Harmonies</i>	11
<i>Previews</i>	23
<i>Color Blindness Simulation</i>	26
<i>CSS Examples</i>	29

Color

R_YB(228, 207, 198)

Conversions

Conversions Part 1

Format	Color
Hex	E4CDC6
RGB	228, 205, 198
RGB Percent	89%, 80%, 78%
CMY	0.1059, 0.1964, 0.2235
CMYK	0.00, 0.10, 0.13, 0.11
HSL	14°, 36%, 84%
HSV	14°, 13%, 89%
XYZ	64.0009, 64.1970, 62.4441
YIQ	211.0790, 15.9550, 2.6990

Conversions

Conversions Part 2

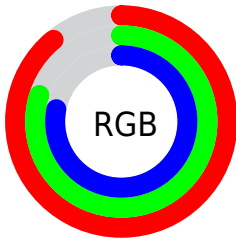
Format	Color
R_{YB}	228, 207, 198
Decimal	14994886
CIE _{Lab}	84.07, 6.92, 6.37
CIE _{LCh}	84, 9.402, 42.619
Yxy	64.1970, 0.3357, 0.3367
Android (android.graphics.Color)	4293184966 (0xFFE4CDC6)
YUV	211.0790, -6.4479, 14.8397
Hunter-Lab	80.1231, 2.3673, 9.8783

Details

The RYB color **228, 207, 198** is a light color, and the websafe version is hex **CCCCCC**. A complement of this color would be **198, 211, 228**, and the grayscale version is **211, 211, 211**.

A 20% lighter version of the original color is 255, 255, 255, and **172, 153, 144** is the 20% darker color. If you saturate the color by 10%, you get **228, 191, 175**, and if you desaturate by 10%, it is **228, 222, 221**.

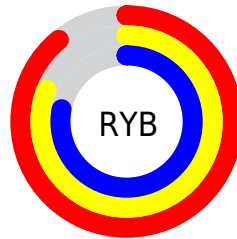
Distribution



Red (89%)

Green (80%)

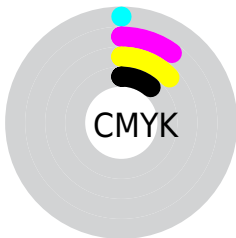
Blue (78%)



Red (89%)

Yellow (81%)

Blue (78%)

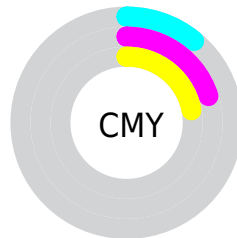


Cyan (0%)

Magenta (10%)

Yellow (13%)

Black (11%)



Cyan (11%)

Magenta (20%)

Yellow (22%)

Brightness & Saturation Gradients

These gradients show how the RYB color 228, 207, 198 changes by changing the brightness by 10 percent. The first figure shows a shift by +10% for each color and the second figure -10%.

Similar to the brightness gradients but the following saturation gradients show a change of the RYB color 228, 207, 198 by changing the saturation by 10% instead.

■ 228, 207, 198

255, 255, 255

■ 228, 207, 198

■ 200, 179, 171

■ 172, 153, 144

■ 146, 127, 119

■ 120, 102, 94

■ 95, 78, 70

■ 71, 54, 48

■ 48, 34, 27

■ 29, 13, 0

■ 0, 0, 0

 228, 207, 198

 228, 207, 198

 228, 191, 175

 228, 222, 221


 228, 176, 152


 228, 235, 244

 228, 158, 130

 228, 242, 255

 228, 143, 107

 228, 127, 84

 228, 112, 61

 228, 95, 38

 228, 80, 16

 228, 69, 0

Harmonies

Analogous

The Analogous color harmony consists of three colors that are next to each other on the color wheel.



229, 204, 206



228, 207, 198



222, 220, 193

Triad

The Triadic color harmony groups three colors that are evenly spaced from another and form a triangle on the color wheel.



228, 207, 198



194, 208, 215



205, 208, 227

Complementary

The Complementary color scheme is a pair of colors which are on the opposite of each other on the color wheel.



228, 207, 198



198, 211, 228

Split Complementary

Split-complementary colors differ from the complementary color scheme. The scheme consists of three colors, the original color and two neighbors of the complement color.



195, 206, 226



228, 207, 198



188, 202, 215

Square

The Square scheme is like the rectangle color scheme, but the four colors are evenly spaced on the color wheel.



228, 207, 198



196, 213, 206



189, 203, 221



216, 206, 223

Rectangle

The Rectangle color scheme consists of four colors that form a rectangle on the color wheel.



228, 207, 198



202, 216, 192



189, 203, 221



202, 208, 227

Sweetspot

The Sweet Spot groups the original color and five complimentary colors.



228, 207, 198



255, 248, 245



228, 198, 222



128, 124, 121



0, 0, 0



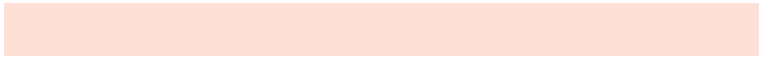
128, 128, 128

Same Dimension

The Same Dimension uses a secret algorithm to generate beautiful new colors.



228, 207, 198



255, 227, 214



209, 228, 198



115, 107, 103



179, 53, 0



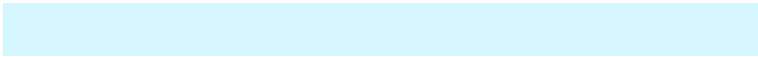
51, 16, 0

Inverse Universe

The Inverse Universe completely reimagines the original color for something new.



198, 211, 228



214, 232, 255



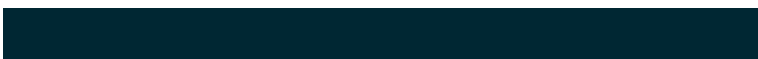
198, 205, 228



103, 108, 115



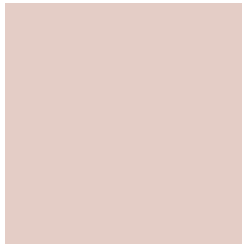
0, 78, 179



0, 22, 51

Previews

White Background



This preview shows how the RYB color 228, 207, 198 looks on a white background.

Color Contrast Check

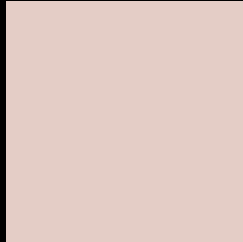
Large Text (above 18pt) WCAG AA × Fail

Any Text WCAG AA × Fail

Large Text (above 18pt) WCAG AAA × Fail

Any Text WCAG AAA × Fail

Black Background



This preview shows how the RYB color 228, 207, 198 looks on a black background.

Color Contrast Check

Large Text (above 18pt) WCAG AA ✓ Pass

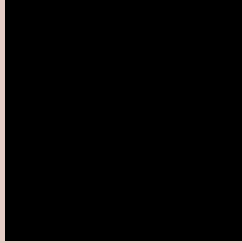
Any Text WCAG AA ✓ Pass

Large Text (above 18pt) WCAG AAA ✓ Pass

Any Text WCAG AAA ✓ Pass

If you want to check with other color combinations, try the [Color Contrast Checker](#).

RYB 228, 207, 198 Background



This preview shows how black text looks on a background with the RYB color 228, 207, 198.

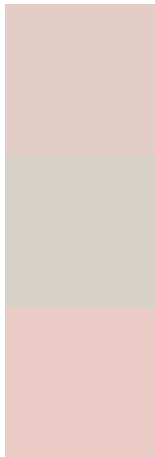


This preview shows how white text looks on a background with the RYB color 228, 207, 198.

Color Blindness Simulation

Color vision deficiency is a very complex topic, and I could not describe the different causes any better than Wikipedia does, so if you want to learn more, you should check out their [article about color blindness](#).

Dichromacy



Original Color
228, 207, 198

Protanopia
212, 216, 200

Deuteranopia
234, 204, 198



Tritanopia
231, 202, 218

Trichromacy



Original Color

228, 207, 198

Protanomaly

220, 215, 199

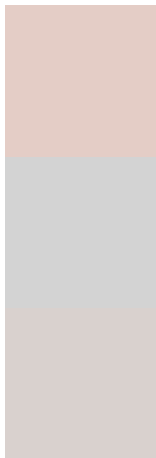
Deuteranomaly

232, 205, 198

Tritanomaly

230, 203, 211

Monochromacy



Original Color

228, 207, 198

Achromatopsia

211, 211, 211

Achromatomaly

217, 210, 206

CSS Examples

Text

The CSS property to change the color of the text to RYB 228, 207, 198 is called "color". The color property can be set on classes, ids or directly on the HTML element.

This example shows how text in the color `rgb(228, 205, 198)` looks like.

```
.text, #text, p{  
    color:rgb(228, 205, 198)  
}
```

If you want to add a text shadow in that color use the text-shadow property, you can generate a text shadow directly with our [CSS Text Shadow Generator](#).

Here you see how black text with a 4 pixel rgb(228, 205, 198) colored shadow looks like.

```
.shadow{ text-shadow: 4px 4px 2px rgb(228, 205, 198) }
```

Border

The CSS property to change the border of an element to RYB 228, 207, 198 is called "border". The border property can be set on classes, ids or directly on the HTML element.

This example shows the color as border, it can be applied via the CSS property "border" or "border-color".

```
.border, #border, table{ border:4px solid rgb(228, 205, 198) }
```

If only the border color should be changed use the property `border-color`.

```
.border{ border-color:rgb(228, 205, 198) }
```

If you want to add a box shadow in that color use:

Here you see how a box with a 4 pixel `rgb(228, 205, 198)` colored shadow looks like.

```
.boxshadow{ -moz-box-shadow:4px 4px 4px 4px rgb(228, 205, 198); -webkit-box-shadow:4px 4px 4px 4px rgb(228, 205, 198); box-shadow:4px 4px 4px 4px rgb(228, 205, 198) }
```

Background

The CSS property to change the background color of an element to RGB 228, 205, 198 is called "background". The background property can be set on classes, ids or directly on the HTML element.

```
.background, #background, body{  
background: rgb(228, 205, 198) }
```

If only the background color should be changed can be used:

```
.background{ background-color: rgb(228,  
205, 198) }
```

This example shows the color as background, it is applied via the CSS property "background".

To optimize and compress your CSS code, you can use our [online CSS compressor and optimizer](#) based on csstidy. If you want to create a linear or radial gradient as background or border, check our [CSS Gradient Generator](#).

Hey! You found this booklet interesting? Support Converting Colors with the new Membership Option!

The pro membership hides all ads, plus gives you double the colors in the color bucket, and more awesome pro features!

[Learn more, Memberships starting at \\$2.50/m!](#)

**Follow me
on Twitter!**

@ConvertingColor