

Converting Colors

`RYB(229, 148, 159)`

Have a look what the booklet for RYB(229, 148, 159) contains.

RYB(229, 148, 159)	3
<i>Conversions</i>	4
<i>Details</i>	6
<i>Harmonies</i>	11
<i>Previews</i>	23
<i>Color Blindness Simulation</i>	26
<i>CSS Examples</i>	29

Color

R_YB(229, 148, 159)

Conversions

Conversions Part 1

Format	Color
Hex	E5949F
RGB	229, 148, 159
RGB Percent	90%, 58%, 62%
CMY	0.1020, 0.4196, 0.3765
CMYK	0.00, 0.35, 0.31, 0.10
HSL	352°, 61%, 74%
HSV	352°, 35%, 90%
XYZ	49.1610, 40.3410, 37.9964
YIQ	173.4730, 44.7450, 20.5930

Conversions

Conversions Part 2

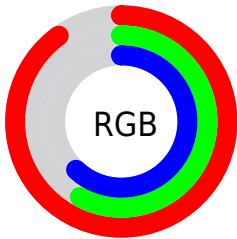
Format	Color
R _Y B	229, 148, 159
Decimal	15045791
CIE Lab	69.71, 31.91, 6.97
CIE LCh	70, 32.663, 12.325
Yxy	40.3410, 0.3856, 0.3164
Android (android.graphics.Color)	4293235871 (0xFFE5949F)
YUV	173.4730, -7.1352, 48.6972
Hunter-Lab	63.5146, 27.0105, 8.9911

Details

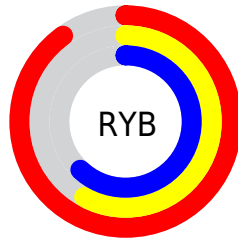
The RYB color **229, 148, 159** is a light color, and the websafe version is hex **FF9999**. A complement of this color would be **148, 191, 229**, and the grayscale version is **174, 174, 174**.

A 20% lighter version of the original color is **255, 203, 214**, and **172, 96, 108** is the 20% darker color. If you saturate the color by 10%, you get **229, 125, 139**, and if you desaturate by 10%, it is **229, 171, 179**.

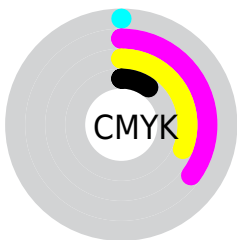
Distribution



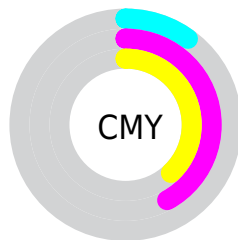
- Red (90%)
- Green (58%)
- Blue (62%)



- Red (90%)
- Yellow (58%)
- Blue (62%)



- Cyan (0%)
- Magenta (35%)
- Yellow (31%)
- Black (10%)



- Cyan (10%)
- Magenta (42%)
- Yellow (38%)

Brightness & Saturation Gradients

These gradients show how the RYB color 229, 148, 159 changes by changing the brightness by 10 percent. The first figure shows a shift by +10% for each color and the second figure -10%.

Similar to the brightness gradients but the following saturation gradients show a change of the RYB color 229, 148, 159 by changing the saturation by 10% instead.

 229, 148, 159

 229, 148, 159

255, 255, 255

 200, 122, 133

 255, 203, 214

 172, 96, 108

 255, 231, 242

 144, 71, 84

 117, 47, 61

 90, 23, 39

 64, 0, 18

 43, 0, 1

 0, 0, 0

 229, 148, 159

 229, 148, 159

■ 229, 125, 139

■ 229, 171, 179

■ 229, 102, 119

■ 229, 194, 199

■ 229, 79, 100

■ 229, 217, 218

■ 229, 56, 80

■ 229, 235, 240

■ 229, 33, 60

■ 229, 242, 255

■ 229, 11, 40

■ 229, 0, 31

Harmonies

Analogous

The Analogous color harmony consists of three colors that are next to each other on the color wheel.



218, 150, 189



229, 148, 159



224, 159, 132

Triad

The Triadic color harmony groups three colors that are evenly spaced from another and form a triangle on the color wheel.



229, 148, 159



126, 180, 161



103, 150, 226

Complementary

The Complementary color scheme is a pair of colors which are on the opposite of each other on the color wheel.



229, 148, 159



148, 191, 229

Split Complementary

Split-complementary colors differ from the complementary color scheme. The scheme consists of three colors, the original color and two neighbors of the complement color.



71, 133, 209



229, 148, 159



110, 158, 185

Square

The Square scheme is like the rectangle color scheme, but the four colors are evenly spaced on the color wheel.



229, 148, 159



119, 178, 112



78, 134, 187



149, 165, 228

Rectangle

The Rectangle color scheme consists of four colors that form a rectangle on the color wheel.



229, 148, 159



213, 189, 119



78, 134, 187



90, 144, 222

Sweetspot

The Sweet Spot groups the original color and five complimentary colors.



229, 148, 159



255, 227, 231



217, 148, 229



128, 111, 113



0, 0, 0



128, 128, 128

Same Dimension

The Same Dimension uses a secret algorithm to generate beautiful new colors.



229, 148, 159



255, 148, 162



229, 191, 148



115, 103, 105



179, 0, 24



51, 0, 7

Inverse Universe

The Inverse Universe completely reimagines the original color for something new.



229, 148, 159



255, 148, 162



148, 180, 229



115, 103, 105



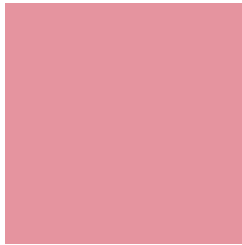
179, 0, 24



51, 0, 7

Previews

White Background



This preview shows how the RYB color 229, 148, 159 looks on a white background.

Color Contrast Check

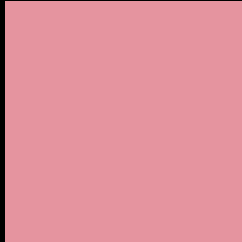
Large Text (above 18pt) WCAG AA × Fail

Any Text WCAG AA × Fail

Large Text (above 18pt) WCAG AAA × Fail

Any Text WCAG AAA × Fail

Black Background



This preview shows how the RYB color 229, 148, 159 looks on a black background.

Color Contrast Check

Large Text (above 18pt) WCAG AA ✓ Pass

Any Text WCAG AA ✓ Pass

Large Text (above 18pt) WCAG AAA ✓ Pass

Any Text WCAG AAA ✓ Pass

If you want to check with other color combinations, try the [Color Contrast Checker](#).

RYB 229, 148, 159 Background



This preview shows how black text looks on a background with the RYB color 229, 148, 159.

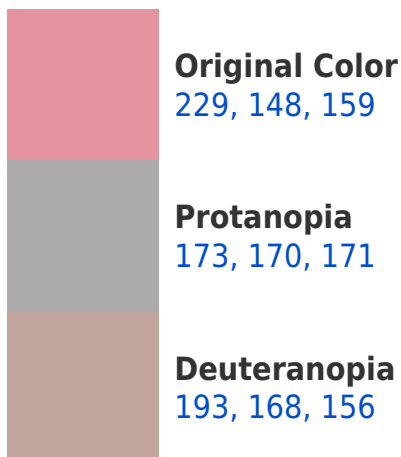


This preview shows how white text looks on a background with the RYB color 229, 148, 159.

Color Blindness Simulation

Color vision deficiency is a very complex topic, and I could not describe the different causes any better than Wikipedia does, so if you want to learn more, you should check out their [article about color blindness](#).

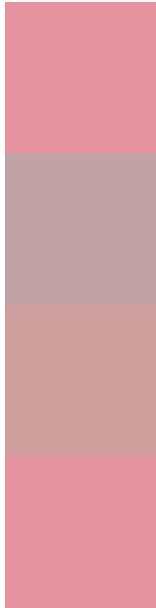
Dichromacy





Tritanopia
229, 148, 159

Trichromacy



Original Color
229, 148, 159

Protanomaly
193, 162, 167

Deuteranomaly
206, 159, 157

Tritanomaly
229, 148, 159

Monochromacy



Original Color
229, 148, 159

Achromatopsia
173, 173, 173

Achromatomaly
193, 164, 168

CSS Examples

Text

The CSS property to change the color of the text to RYB 229, 148, 159 is called "color". The color property can be set on classes, ids or directly on the HTML element.

This example shows how text in the color rgb(229, 148, 159) looks like.

```
.text, #text, p{  
    color:rgb(229, 148, 159)  
}
```

If you want to add a text shadow in that color use the text-shadow property, you can generate a text shadow directly with our [CSS Text Shadow Generator](#).

Here you see how black text with a 4 pixel rgb(229, 148, 159) colored shadow looks like.

```
.shadow{ text-shadow: 4px 4px 2px rgb(229, 148, 159) }
```

Border

The CSS property to change the border of an element to RYB 229, 148, 159 is called "border". The border property can be set on classes, ids or directly on the HTML element.

This example shows the color as border, it can be applied via the CSS property "border" or "border-color".

```
.border, #border, table{ border:4px solid rgb(229, 148, 159) }
```

If only the border color should be changed use the property `border-color`.

```
.border{ border-color:rgb(229, 148, 159) }
```

If you want to add a box shadow in that color use:

Here you see how a box with a 4 pixel `rgb(229, 148, 159)` colored shadow looks like.

```
.boxshadow{ -moz-box-shadow:4px 4px 4px  
4px rgb(229, 148, 159); -webkit-box-  
shadow:4px 4px 4px 4px rgb(229, 148, 159);  
box-shadow:4px 4px 4px 4px rgb(229, 148,  
159) }
```

Background

The CSS property to change the background color of an element to RYB 229, 148, 159 is called "background". The background property can be set on classes, ids or directly on the HTML element.

```
.background, #background, body{  
background: rgb(229, 148, 159) }
```

If only the background color should be changed can be used:

```
.background{ background-color: rgb(229,  
148, 159) }
```

This example shows the color as background, it is applied via the CSS property "background".

To optimize and compress your CSS code, you can use our [online CSS compressor and optimizer](#) based on csstidy. If you want to create a linear or radial gradient as background or border, check our [CSS Gradient Generator](#).

Hey! You found this booklet interesting? Support Converting Colors with the new Membership Option!

The pro membership hides all ads, plus gives you double the colors in the color bucket, and more awesome pro features!

[Learn more, Memberships starting at \\$2.50/m!](#)

**Follow me
on Twitter!**

@ConvertingColor