

Converting Colors

`RYB(229, 158, 189)`

Have a look what the booklet for
RYB(229, 158, 189) contains.

RYB(229, 158, 189)	3
<i>Conversions</i>	4
<i>Details</i>	6
<i>Harmonies</i>	11
<i>Previews</i>	23
<i>Color Blindness Simulation</i>	26
<i>CSS Examples</i>	29

Color

R_YB(229, 158, 189)

Conversions

Conversions Part 1

Format	Color
Hex	E59EBD
RGB	229, 158, 189
RGB Percent	90%, 62%, 74%
CMY	0.1020, 0.3804, 0.2588
CMYK	0.00, 0.31, 0.17, 0.10
HSL	334°, 58%, 76%
HSV	334°, 31%, 90%
XYZ	53.7253, 44.7859, 53.9570
YIQ	182.7630, 32.3650, 24.6930

Conversions

Conversions Part 2

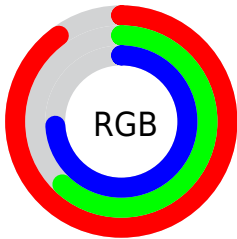
Format	Color
R _Y B	229, 158, 189
Decimal	15048381
CIE Lab	72.75, 30.87, -5.25
CIE LCh	73, 31.310, 350.348
Yxy	44.7859, 0.3524, 0.2937
Android (android.graphics.Color)	4293238461 (0xFFE59EBD)
YUV	182.7630, 3.0748, 40.5498
Hunter-Lab	66.9222, 26.1861, -0.9579

Details

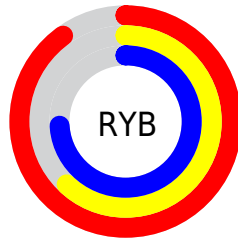
The RYB color **229, 158, 189** is a light color, and the websafe version is hex **CC99CC**. A complement of this color would be **158, 203, 229**, and the grayscale version is **183, 183, 183**.

A 20% lighter version of the original color is **255, 213, 245**, and **172, 106, 136** is the 20% darker color. If you saturate the color by 10%, you get **229, 135, 176**, and if you desaturate by 10%, it is **229, 181, 202**.

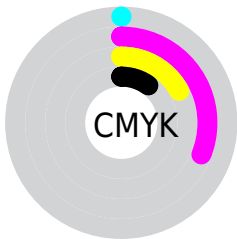
Distribution



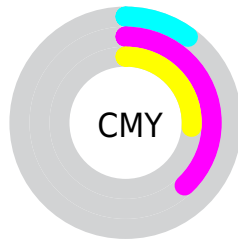
- Red (90%)
- Green (62%)
- Blue (74%)



- Red (90%)
- Yellow (62%)
- Blue (74%)



- Cyan (0%)
- Magenta (31%)
- Yellow (17%)
- Black (10%)



- Cyan (10%)
- Magenta (38%)
- Yellow (26%)

Brightness & Saturation Gradients

These gradients show how the RYB color 229, 158, 189 changes by changing the brightness by 10 percent. The first figure shows a shift by +10% for each color and the second figure -10%.

Similar to the brightness gradients but the following saturation gradients show a change of the RYB color 229, 158, 189 by changing the saturation by 10% instead.

 229, 158, 189

 229, 158, 189

255, 255, 255

 200, 131, 162


 255, 213, 245

 172, 106, 136

 255, 242, 255

 145, 81, 110

 118, 56, 86


 93, 33, 63

 67, 7, 41

 45, 0, 21

 0, 0, 0

 229, 158, 189

 229, 158, 189

 229, 135, 176

 229, 181, 202

 229, 112, 163

 229, 204, 215

 229, 89, 150

 229, 227, 228

 229, 66, 137

 229, 242, 250

 229, 43, 124

 229, 242, 255

 229, 21, 112

 229, 242, 255

 229, 0, 100

Harmonies

Analogous

The Analogous color harmony consists of three colors that are next to each other on the color wheel.



206, 165, 215



229, 158, 189



236, 158, 160

Triad

The Triadic color harmony groups three colors that are evenly spaced from another and form a triangle on the color wheel.



229, 158, 189



124, 183, 128



93, 149, 222

Complementary

The Complementary color scheme is a pair of colors which are on the opposite of each other on the color wheel.



229, 158, 189



158, 203, 229

Split Complementary

Split-complementary colors differ from the complementary color scheme. The scheme consists of three colors, the original color and two neighbors of the complement color.



88, 142, 197



229, 158, 189



141, 190, 185

Square

The Square scheme is like the rectangle color scheme, but the four colors are evenly spaced on the color wheel.



229, 158, 189



176, 207, 122



113, 161, 194



127, 164, 234

Rectangle

The Rectangle color scheme consists of four colors that form a rectangle on the color wheel.



229, 158, 189



232, 166, 143



113, 161, 194



87, 145, 215

Sweetspot

The Sweet Spot groups the original color and five complimentary colors.



229, 158, 189



255, 232, 242



197, 158, 229



128, 113, 120



0, 0, 0



128, 128, 128

Same Dimension

The Same Dimension uses a secret algorithm to generate beautiful new colors.



229, 158, 189



255, 161, 202



229, 162, 158



115, 103, 108



179, 0, 78



51, 0, 22

Inverse Universe

The Inverse Universe completely reimagines the original color for something new.



229, 158, 189



255, 161, 202



158, 192, 229



115, 103, 108



179, 0, 78



51, 0, 22

Previews

White Background



This preview shows how the RYB color 229, 158, 189 looks on a white background.

Color Contrast Check

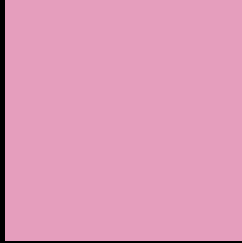
Large Text (above 18pt) WCAG AA × Fail

Any Text WCAG AA × Fail

Large Text (above 18pt) WCAG AAA × Fail

Any Text WCAG AAA × Fail

Black Background



This preview shows how the RYB color 229, 158, 189 looks on a black background.

Color Contrast Check

Large Text (above 18pt) WCAG AA ✓ Pass

Any Text WCAG AA ✓ Pass

Large Text (above 18pt) WCAG AAA ✓ Pass

Any Text WCAG AAA ✓ Pass

If you want to check with other color combinations, try the [Color Contrast Checker](#).

RYB 229, 158, 189 Background



This preview shows how black text looks on a background with the RYB color 229, 158, 189.



This preview shows how white text looks on a background with the RYB color 229, 158, 189.

Color Blindness Simulation

Color vision deficiency is a very complex topic, and I could not describe the different causes any better than Wikipedia does, so if you want to learn more, you should check out their [article about color blindness](#).

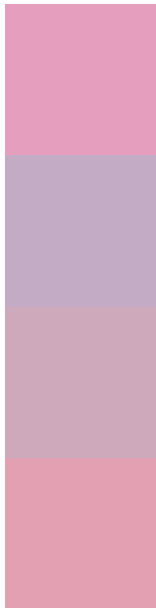
Dichromacy





Tritanopia
227, 161, 173

Trichromacy



Original Color
229, 158, 189

Protanomaly
195, 171, 197

Deuteranomaly
206, 168, 187

Tritanomaly
228, 160, 179

Monochromacy



Original Color
229, 158, 189

Achromatopsia
183, 183, 183

Achromatomaly
200, 174, 185

CSS Examples

Text

The CSS property to change the color of the text to RYB 229, 158, 189 is called "color". The color property can be set on classes, ids or directly on the HTML element.

This example shows how text in the color rgb(229, 158, 189) looks like.

```
.text, #text, p{  
    color:rgb(229, 158, 189)  
}
```

If you want to add a text shadow in that color use the text-shadow property, you can generate a text shadow directly with our [CSS Text Shadow Generator](#).

Here you see how black text with a 4 pixel rgb(229, 158, 189) colored shadow looks like.

```
.shadow{ text-shadow: 4px 4px 2px rgb(229, 158, 189) }
```

Border

The CSS property to change the border of an element to RYB 229, 158, 189 is called "border". The border property can be set on classes, ids or directly on the HTML element.

This example shows the color as border, it can be applied via the CSS property "border" or "border-color".

```
.border, #border, table{ border:4px solid rgb(229, 158, 189) }
```

If only the border color should be changed use the property `border-color`.

```
.border{ border-color:rgb(229, 158, 189) }
```

If you want to add a box shadow in that color use:

Here you see how a box with a 4 pixel `rgb(229, 158, 189)` colored shadow looks like.

```
.boxshadow{ -moz-box-shadow:4px 4px 4px  
4px rgb(229, 158, 189); -webkit-box-  
shadow:4px 4px 4px 4px rgb(229, 158, 189);  
box-shadow:4px 4px 4px 4px rgb(229, 158,  
189) }
```

Background

The CSS property to change the background color of an element to RYB 229, 158, 189 is called "background". The background property can be set on classes, ids or directly on the HTML element.

```
.background, #background, body{  
background: rgb(229, 158, 189) }
```

If only the background color should be changed can be used:

```
.background{ background-color: rgb(229,  
158, 189) }
```

This example shows the color as background, it is applied via the CSS property "background".

To optimize and compress your CSS code, you can use our [online CSS compressor and optimizer](#) based on csstidy. If you want to create a linear or radial gradient as background or border, check our [CSS Gradient Generator](#).

Hey! You found this booklet interesting? Support Converting Colors with the new Membership Option!

The pro membership hides all ads, plus gives you double the colors in the color bucket, and more awesome pro features!

[Learn more, Memberships starting at \\$2.50/m!](#)

**Follow me
on Twitter!**

@ConvertingColor