

Converting Colors

`RYB(229, 162, 179)`

Have a look what the booklet for RYB(229, 162, 179) contains.

RYB(229, 162, 179)	3
<i>Conversions</i>	4
<i>Details</i>	6
<i>Harmonies</i>	11
<i>Previews</i>	23
<i>Color Blindness Simulation</i>	26
<i>CSS Examples</i>	29

Color

R_YB(229, 162, 179)

Conversions

Conversions Part 1

Format	Color
Hex	E5A2B3
RGB	229, 162, 179
RGB Percent	90%, 64%, 70%
CMY	0.1020, 0.3647, 0.2980
CMYK	0.00, 0.29, 0.22, 0.10
HSL	345°, 56%, 77%
HSV	345°, 29%, 90%
XYZ	53.3701, 45.7533, 48.6662
YIQ	183.9710, 34.4750, 19.4910

Conversions

Conversions Part 2

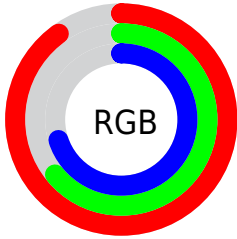
Format	Color
R _Y B	229, 162, 179
Decimal	15049395
CIE Lab	73.39, 27.22, 1.20
CIE LCh	73, 27.245, 2.517
Yxy	45.7533, 0.3611, 0.3096
Android (android.graphics.Color)	4293239475 (0xFFE5A2B3)
YUV	183.9710, -2.4507, 39.4904
Hunter-Lab	67.6412, 22.4675, 4.6912

Details

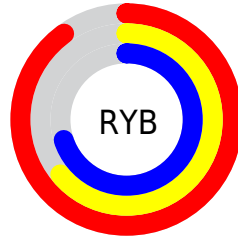
The RYB color **229, 162, 179** is a light color, and the websafe version is hex **CC9999**. A complement of this color would be **162, 200, 229**, and the grayscale version is **184, 184, 184**.

A 20% lighter version of the original color is **255, 217, 235**, and **172, 110, 126** is the 20% darker color. If you saturate the color by 10%, you get **229, 139, 162**, and if you desaturate by 10%, it is **229, 185, 196**.

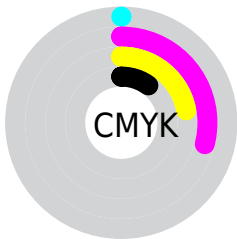
Distribution



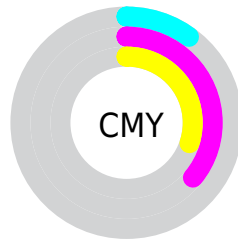
- Red (90%)
- Green (64%)
- Blue (70%)



- Red (90%)
- Yellow (64%)
- Blue (70%)



- Cyan (0%)
- Magenta (29%)
- Yellow (22%)
- Black (10%)



- Cyan (10%)
- Magenta (36%)
- Yellow (30%)

Brightness & Saturation Gradients

These gradients show how the RYB color 229, 162, 179 changes by changing the brightness by 10 percent. The first figure shows a shift by +10% for each color and the second figure -10%.

Similar to the brightness gradients but the following saturation gradients show a change of the RYB color 229, 162, 179 by changing the saturation by 10% instead.


 229, 162, 179

 229, 162, 179

255, 255, 255

 200, 135, 152

 255, 217, 235

 172, 110, 126

 255, 246, 255

 145, 85, 101

 118, 61, 78

 92, 37, 55

 67, 14, 34

 45, 0, 11

 0, 0, 0

 229, 162, 179

 229, 162, 179

 229, 139, 162


 229, 185, 196

 229, 116, 145

 229, 208, 213

 229, 93, 128

 229, 230, 231

 229, 70, 111

 229, 244, 254

 229, 48, 94

 229, 242, 255

 229, 25, 76

 229, 2, 59

 229, 0, 58

Harmonies

Analogous

The Analogous color harmony consists of three colors that are next to each other on the color wheel.



214, 165, 204



229, 162, 179



230, 165, 155

Triad

The Triadic color harmony groups three colors that are evenly spaced from another and form a triangle on the color wheel.



229, 162, 179



138, 187, 156



120, 161, 224

Complementary

The Complementary color scheme is a pair of colors which are on the opposite of each other on the color wheel.



229, 162, 179



162, 200, 229

Split Complementary

Split-complementary colors differ from the complementary color scheme. The scheme consists of three colors, the original color and two neighbors of the complement color.



105, 152, 206



229, 162, 179



141, 180, 192

Square

The Square scheme is like the rectangle color scheme, but the four colors are evenly spaced on the color wheel.



229, 162, 179



153, 196, 130



116, 158, 194



152, 174, 230

Rectangle

The Rectangle color scheme consists of four colors that form a rectangle on the color wheel.



229, 162, 179



223, 180, 142



116, 158, 194



112, 157, 219

Sweetspot

The Sweet Spot groups the original color and five complimentary colors.



229, 162, 179



255, 232, 238



211, 162, 229



128, 113, 117



0, 0, 0



128, 128, 128

Same Dimension

The Same Dimension uses a secret algorithm to generate beautiful new colors.



229, 162, 179



255, 166, 188



229, 183, 162



115, 103, 106



179, 0, 45



51, 0, 13

Inverse Universe

The Inverse Universe completely reimagines the original color for something new.



229, 162, 179



255, 166, 188



162, 191, 229



115, 103, 106



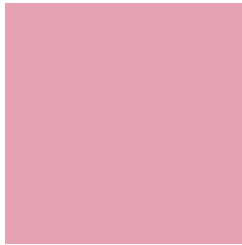
179, 0, 45



51, 0, 13

Previews

White Background



This preview shows how the RYB color 229, 162, 179 looks on a white background.

Color Contrast Check

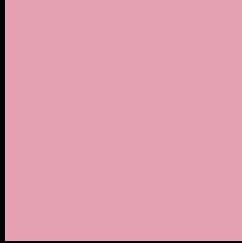
Large Text (above 18pt) WCAG AA × Fail

Any Text WCAG AA × Fail

Large Text (above 18pt) WCAG AAA × Fail

Any Text WCAG AAA × Fail

Black Background



This preview shows how the RYB color 229, 162, 179 looks on a black background.

Color Contrast Check

Large Text (above 18pt) WCAG AA ✓ Pass

Any Text WCAG AA ✓ Pass

Large Text (above 18pt) WCAG AAA ✓ Pass

Any Text WCAG AAA ✓ Pass

If you want to check with other color combinations, try the [Color Contrast Checker](#).

RYB 229, 162, 179 Background



This preview shows how black text looks on a background with the RYB color 229, 162, 179.



This preview shows how white text looks on a background with the RYB color 229, 162, 179.

Color Blindness Simulation

Color vision deficiency is a very complex topic, and I could not describe the different causes any better than Wikipedia does, so if you want to learn more, you should check out their [article about color blindness](#).


Dichromacy



Original Color
229, 162, 179

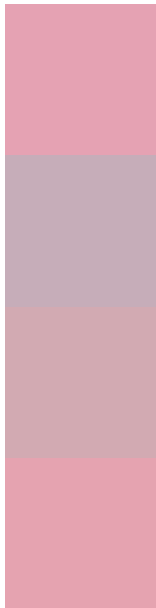
Protanopia
181, 180, 189

Deuteranopia
199, 175, 177



Tritanopia
229, 163, 175

Trichromacy



Original Color
229, 162, 179

Protanomaly
198, 173, 185

Deuteranomaly
210, 170, 178

Tritanomaly
229, 163, 176

Monochromacy



Original Color
229, 162, 179

Achromatopsia
184, 184, 184

Achromatomaly
200, 176, 182

CSS Examples

Text

The CSS property to change the color of the text to RYB 229, 162, 179 is called "color". The color property can be set on classes, ids or directly on the HTML element.

This example shows how text in the color rgb(229, 162, 179) looks like.

```
.text, #text, p{  
    color:rgb(229, 162, 179)  
}
```

If you want to add a text shadow in that color use the text-shadow property, you can generate a text shadow directly with our [CSS Text Shadow Generator](#).

Here you see how black text with a 4 pixel rgb(229, 162, 179) colored shadow looks like.

```
.shadow{ text-shadow: 4px 4px 2px rgb(229, 162, 179) }
```

Border

The CSS property to change the border of an element to RYB 229, 162, 179 is called "border". The border property can be set on classes, ids or directly on the HTML element.

This example shows the color as border, it can be applied via the CSS property "border" or "border-color".

```
.border, #border, table{ border:4px solid rgb(229, 162, 179) }
```

If only the border color should be changed use the property `border-color`.

```
.border{ border-color:rgb(229, 162, 179) }
```

If you want to add a box shadow in that color use:

Here you see how a box with a 4 pixel `rgb(229, 162, 179)` colored shadow looks like.

```
.boxshadow{ -moz-box-shadow:4px 4px 4px  
4px rgb(229, 162, 179); -webkit-box-  
shadow:4px 4px 4px 4px rgb(229, 162, 179);  
box-shadow:4px 4px 4px 4px rgb(229, 162,  
179) }
```

Background

The CSS property to change the background color of an element to RYB 229, 162, 179 is called "background". The background property can be set on classes, ids or directly on the HTML element.

```
.background, #background, body{  
background: rgb(229, 162, 179) }
```

If only the background color should be changed can be used:

```
.background{ background-color: rgb(229,  
162, 179) }
```

This example shows the color as background, it is applied via the CSS property "background".

To optimize and compress your CSS code, you can use our [online CSS compressor and optimizer](#) based on csstidy. If you want to create a linear or radial gradient as background or border, check our [CSS Gradient Generator](#).

Hey! You found this booklet interesting? Support Converting Colors with the new Membership Option!

The pro membership hides all ads, plus gives you double the colors in the color bucket, and more awesome pro features!

[Learn more, Memberships starting at \\$2.50/m!](#)

**Follow me
on Twitter!**

@ConvertingColor