

Converting Colors

`RYB(229, 186, 182)`

Have a look what the booklet for RYB(229, 186, 182) contains.

RYB(229, 186, 182)	3
<i>Conversions</i>	4
<i>Details</i>	6
<i>Harmonies</i>	11
<i>Previews</i>	23
<i>Color Blindness Simulation</i>	26
<i>CSS Examples</i>	29

Color

R_YB(229, 186, 182)

Conversions

Conversions Part 1

Format	Color
Hex	E5BAB6
RGB	229, 186, 182
RGB Percent	90%, 73%, 71%
CMY	0.1020, 0.2718, 0.2863
CMYK	0.00, 0.19, 0.21, 0.10
HSL	5°, 47%, 81%
HSV	5°, 21%, 90%
XYZ	58.2495, 55.0212, 51.8060
YIQ	198.4010, 26.9120, 7.8720

Conversions

Conversions Part 2

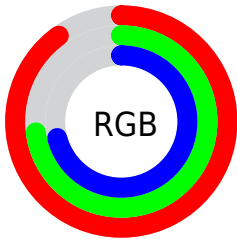
Format	Color
R _Y B	229, 186, 182
Decimal	15055542
CIE Lab	79.05, 14.99, 7.75
CIE LCh	79, 16.877, 27.333
Yxy	55.0212, 0.3529, 0.3333
Android (android.graphics.Color)	4293245622 (0xFFE5BAB6)
YUV	198.4010, -8.0857, 26.8353
Hunter-Lab	74.1763, 10.3649, 10.5142

Details

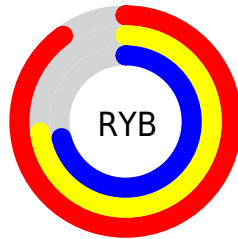
The RYB color **229, 186, 182** is a light color, and the websafe version is hex **FFCCCC**. A complement of this color would be **182, 204, 229**, and the grayscale version is **198, 198, 198**.

A 20% lighter version of the original color is **255, 243, 238**, and **173, 133, 129** is the 20% darker color. If you saturate the color by 10%, you get **229, 166, 159**, and if you desaturate by 10%, it is **229, 207, 205**.

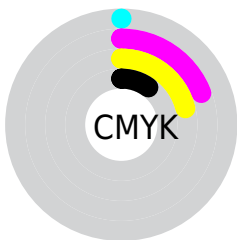
Distribution



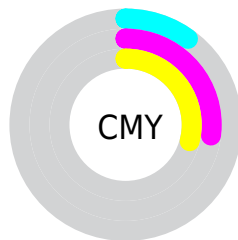
- Red (90%)
- Green (73%)
- Blue (71%)



- Red (90%)
- Yellow (73%)
- Blue (71%)



- Cyan (0%)
- Magenta (19%)
- Yellow (21%)
- Black (10%)




- Cyan (10%)
- Magenta (27%)
- Yellow (29%)

Brightness & Saturation Gradients


These gradients show how the RYB color 229, 186, 182 changes by changing the brightness by 10 percent. The first figure shows a shift by +10% for each color and the second figure -10%.

Similar to the brightness gradients but the following saturation gradients show a change of the RYB color 229, 186, 182 by changing the saturation by 10% instead.

 229, 186, 182

 229, 186, 182


255, 255, 255

 201, 159, 155

 255, 243, 238

 173, 132, 129

 146, 107, 104

 120, 83, 80

 94, 59, 57

 70, 37, 36


 46, 17, 14

 23, 0, 0

 0, 0, 0

 229, 186, 182

 229, 186, 182

 229, 166, 159

 229, 207, 205

 229, 144, 136

 229, 228, 228

 229, 123, 113

 229, 239, 251

 229, 102, 90

 229, 242, 255

 229, 81, 68

 229, 60, 45

 229, 39, 22

 229, 20, 0

Harmonies

Analogous

The Analogous color harmony consists of three colors that are next to each other on the color wheel.



226, 185, 198



229, 186, 182



223, 200, 170

Triad

The Triadic color harmony groups three colors that are evenly spaced from another and form a triangle on the color wheel.



229, 186, 182



175, 200, 203



177, 192, 227

Complementary

The Complementary color scheme is a pair of colors which are on the opposite of each other on the color wheel.



229, 186, 182



182, 204, 229

Split Complementary

Split-complementary colors differ from the complementary color scheme. The scheme consists of three colors, the original color and two neighbors of the complement color.



161, 186, 222



229, 186, 182



160, 186, 205

Square

The Square scheme is like the rectangle color scheme, but the four colors are evenly spaced on the color wheel.



229, 186, 182



168, 199, 174



155, 181, 210



197, 192, 224

Rectangle

The Rectangle color scheme consists of four colors that form a rectangle on the color wheel.



229, 186, 182



208, 215, 165



155, 181, 210



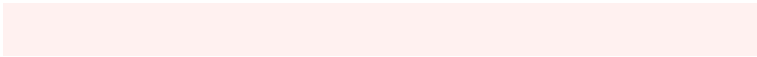
171, 190, 226

Sweetspot

The Sweet Spot groups the original color and five complimentary colors.



229, 186, 182



255, 241, 240



229, 182, 226



128, 119, 119



0, 0, 0



128, 128, 128

Same Dimension

The Same Dimension uses a secret algorithm to generate beautiful new colors.



229, 186, 182



255, 196, 191



217, 229, 182



115, 104, 103



179, 15, 0



51, 4, 0

Inverse Universe

The Inverse Universe completely reimagines the original color for something new.



182, 204, 229



191, 222, 255



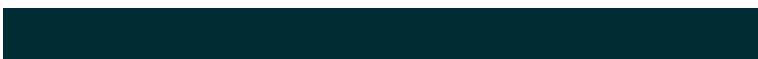
182, 196, 229



103, 109, 115



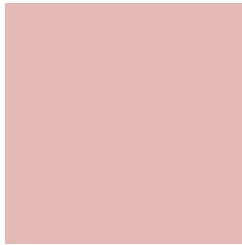
0, 86, 179



0, 24, 51

Previews

White Background



This preview shows how the RYB color 229, 186, 182 looks on a white background.

Color Contrast Check

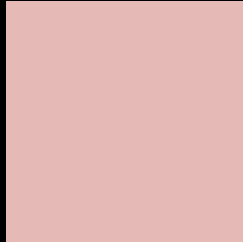
Large Text (above 18pt) WCAG AA × Fail

Any Text WCAG AA × Fail

Large Text (above 18pt) WCAG AAA × Fail

Any Text WCAG AAA × Fail

Black Background



This preview shows how the RYB color 229, 186, 182 looks on a black background.

Color Contrast Check

Large Text (above 18pt) WCAG AA ✓ Pass

Any Text WCAG AA ✓ Pass

Large Text (above 18pt) WCAG AAA ✓ Pass

Any Text WCAG AAA ✓ Pass

If you want to check with other color combinations, try the [Color Contrast Checker](#).

R Y B 229, 186, 182 Background



This preview shows how black text looks on a background with the RYB color 229, 186, 182.



This preview shows how white text looks on a background with the RYB color 229, 186, 182.

Color Blindness Simulation

Color vision deficiency is a very complex topic, and I could not describe the different causes any better than Wikipedia does, so if you want to learn more, you should check out their [article about color blindness](#).


Dichromacy



Original Color
229, 186, 182

Protanopia
200, 202, 187

Deuteranopia
220, 191, 181



Tritanopia
231, 183, 198

Trichromacy



Original Color

229, 186, 182

Protanomaly

212, 194, 185

Deuteranomaly

223, 189, 181

Tritanomaly

230, 184, 192

Monochromacy



Original Color

229, 186, 182

Achromatopsia

198, 198, 198

Achromatomaly

209, 194, 192

CSS Examples

Text

The CSS property to change the color of the text to RYB 229, 186, 182 is called "color". The color property can be set on classes, ids or directly on the HTML element.

This example shows how text in the color `rgb(229, 186, 182)` looks like.

```
.text, #text, p{  
    color:rgb(229, 186, 182)  
}
```

If you want to add a text shadow in that color use the text-shadow property, you can generate a text shadow directly with our [CSS Text Shadow Generator](#).

Here you see how black text with a 4 pixel rgb(229, 186, 182) colored shadow looks like.

```
.shadow{ text-shadow: 4px 4px 2px rgb(229, 186, 182) }
```

Border

The CSS property to change the border of an element to RYB 229, 186, 182 is called "border". The border property can be set on classes, ids or directly on the HTML element.

This example shows the color as border, it can be applied via the CSS property "border" or "border-color".

```
.border, #border, table{ border:4px solid rgb(229, 186, 182) }
```

If only the border color should be changed use the property `border-color`.

```
.border{ border-color:rgb(229, 186, 182) }
```

If you want to add a box shadow in that color use:

Here you see how a box with a 4 pixel `rgb(229, 186, 182)` colored shadow looks like.

```
.boxshadow{ -moz-box-shadow:4px 4px 4px 4px rgb(229, 186, 182); -webkit-box-shadow:4px 4px 4px 4px rgb(229, 186, 182); box-shadow:4px 4px 4px 4px rgb(229, 186, 182) }
```

Background

The CSS property to change the background color of an element to RYB 229, 186, 182 is called "background". The background property can be set on classes, ids or directly on the HTML element.

```
.background, #background, body{  
background: rgb(229, 186, 182) }
```

If only the background color should be changed can be used:

```
.background{ background-color: rgb(229,  
186, 182) }
```

This example shows the color as background, it is applied via the CSS property "background".

To optimize and compress your CSS code, you can use our [online CSS compressor and optimizer](#) based on csstidy. If you want to create a linear or radial gradient as background or border, check our [CSS Gradient Generator](#).

Hey! You found this booklet interesting? Support Converting Colors with the new Membership Option!

The pro membership hides all ads, plus gives you double the colors in the color bucket, and more awesome pro features!

[Learn more, Memberships starting at \\$2.50/m!](#)

**Follow me
on Twitter!**

@ConvertingColor