

Converting Colors

`RYB(229, 198, 202)`

Have a look what the booklet for RYB(229, 198, 202) contains.

RYB(229, 198, 202)	3
<i>Conversions</i>	4
<i>Details</i>	6
<i>Harmonies</i>	11
<i>Previews</i>	23
<i>Color Blindness Simulation</i>	26
<i>CSS Examples</i>	29

Color

R_YB(229, 198, 202)

Conversions

Conversions Part 1

Format	Color
Hex	E5C6CA
RGB	229, 198, 202
RGB Percent	90%, 78%, 79%
CMY	0.1020, 0.2235, 0.2078
CMYK	0.00, 0.14, 0.12, 0.10
HSL	352°, 37%, 84%
HSV	352°, 14%, 90%
XYZ	63.1679, 61.3104, 64.3819
YIQ	207.7250, 17.1920, 7.8160

Conversions

Conversions Part 2

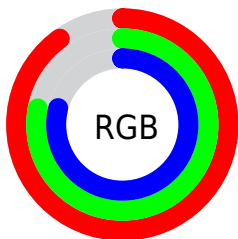
Format	Color
R _Y B	229, 198, 202
Decimal	15058634
CIE Lab	82.55, 11.57, 2.04
CIE LCh	83, 11.751, 9.992
Yxy	61.3104, 0.3345, 0.3246
Android (android.graphics.Color)	4293248714 (0xFFE5C6CA)
YUV	207.7250, -2.8224, 18.6582
Hunter-Lab	78.3010, 6.9748, 6.0603

Details

The RYB color **229, 198, 202** is a light color, and the websafe version is hex **FFCCCC**. A complement of this color would be **198, 215, 229**, and the grayscale version is **208, 208, 208**.

A 20% lighter version of the original color is 255, 255, 255, and **173, 144, 148** is the 20% darker color. If you saturate the color by 10%, you get **229, 175, 182**, and if you desaturate by 10%, it is **229, 221, 222**.

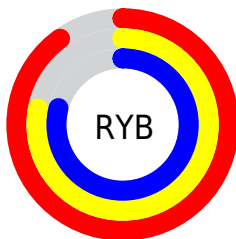
Distribution



Red (90%)

Green (78%)

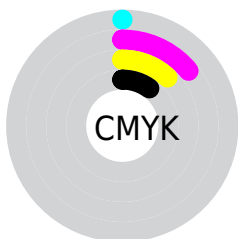
Blue (79%)



Red (90%)

Yellow (78%)

Blue (79%)

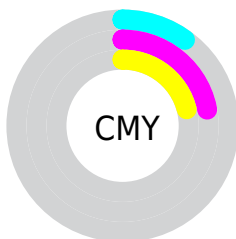


Cyan (0%)

Magenta (14%)

Yellow (12%)

Black (10%)



Cyan (10%)

Magenta (22%)

Yellow (21%)

Brightness & Saturation Gradients

These gradients show how the RYB color 229, 198, 202 changes by changing the brightness by 10 percent. The first figure shows a shift by +10% for each color and the second figure -10%.

Similar to the brightness gradients but the following saturation gradients show a change of the RYB color 229, 198, 202 by changing the saturation by 10% instead.

■ 229, 198, 202

255, 255, 255

■ 229, 198, 202

■ 201, 171, 175

■ 173, 144, 148

■ 147, 118, 122

■ 121, 94, 97

■ 96, 70, 74

■ 71, 47, 51


■ 48, 26, 30

■ 30, 0, 5


■ 0, 0, 0

 229, 198, 202

 229, 198, 202

 229, 175, 182

 229, 221, 222

 229, 152, 162

 229, 237, 244

 229, 129, 142

 229, 242, 255

 229, 106, 122

 229, 84, 102

 229, 61, 82

 229, 38, 62

 229, 15, 42

 229, 0, 30

Harmonies

Analogous

The Analogous color harmony consists of three colors that are next to each other on the color wheel.



223, 199, 213



229, 198, 202



228, 201, 192

Triad

The Triadic color harmony groups three colors that are evenly spaced from another and form a triangle on the color wheel.



229, 198, 202



188, 209, 199



186, 201, 226

Complementary

The Complementary color scheme is a pair of colors which are on the opposite of each other on the color wheel.



229, 198, 202



198, 215, 229

Split Complementary

Split-complementary colors differ from the complementary color scheme. The scheme consists of three colors, the original color and two neighbors of the complement color.



179, 197, 219



229, 198, 202



186, 203, 211

Square

The Square scheme is like the rectangle color scheme, but the four colors are evenly spaced on the color wheel.



229, 198, 202



190, 211, 184



179, 196, 212



198, 204, 227

Rectangle

The Rectangle color scheme consists of four colors that form a rectangle on the color wheel.



229, 198, 202



224, 210, 187



179, 196, 212



183, 199, 224

Sweetspot

The Sweet Spot groups the original color and five complimentary colors.



229, 198, 202



255, 245, 246



225, 198, 229



128, 121, 122



0, 0, 0



128, 128, 128

Same Dimension

The Same Dimension uses a secret algorithm to generate beautiful new colors.



229, 198, 202



255, 214, 219



229, 215, 198



115, 103, 105



179, 0, 23



51, 0, 7

Inverse Universe

The Inverse Universe completely reimagines the original color for something new.



229, 198, 202



255, 214, 219



198, 210, 229



115, 103, 105



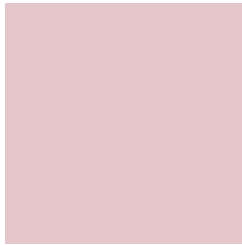
179, 0, 23



51, 0, 7

Previews

White Background



This preview shows how the RYB color 229, 198, 202 looks on a white background.

Color Contrast Check

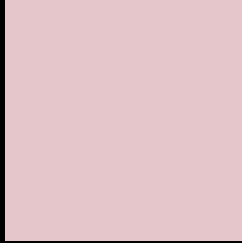
Large Text (above 18pt) WCAG AA × Fail

Any Text WCAG AA × Fail

Large Text (above 18pt) WCAG AAA × Fail

Any Text WCAG AAA × Fail

Black Background



This preview shows how the RYB color 229, 198, 202 looks on a black background.

Color Contrast Check

Large Text (above 18pt) WCAG AA ✓ Pass

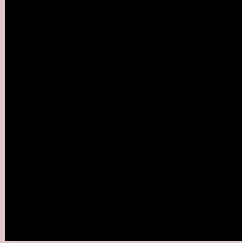
Any Text WCAG AA ✓ Pass

Large Text (above 18pt) WCAG AAA ✓ Pass

Any Text WCAG AAA ✓ Pass

If you want to check with other color combinations, try the [Color Contrast Checker](#).

R Y B 229, 198, 202 Background



This preview shows how black text looks on a background with the RYB color 229, 198, 202.




This preview shows how white text looks on a background with the RYB color 229, 198, 202.

Color Blindness Simulation

Color vision deficiency is a very complex topic, and I could not describe the different causes any better than Wikipedia does, so if you want to learn more, you should check out their [article about color blindness](#).

Dichromacy

	Original Color 229, 198, 202
	Protanopia 209, 205, 206
	Deuteranopia 227, 199, 202



Tritanopia
230, 196, 212

Trichromacy



Original Color

229, 198, 202

Protanomaly

216, 202, 205

Deuteranomaly

228, 199, 202

Tritanomaly

230, 197, 208

Monochromacy



Original Color

229, 198, 202

Achromatopsia

208, 208, 208

Achromatomaly

216, 204, 206

CSS Examples

Text

The CSS property to change the color of the text to RYB 229, 198, 202 is called "color". The color property can be set on classes, ids or directly on the HTML element.

This example shows how text in the color rgb(229, 198, 202) looks like.

```
.text, #text, p{  
    color:rgb(229, 198, 202)  
}
```

If you want to add a text shadow in that color use the text-shadow property, you can generate a text shadow directly with our [CSS Text Shadow Generator](#).

Here you see how black text with a 4 pixel rgb(229, 198, 202) colored shadow looks like.

```
.shadow{ text-shadow: 4px 4px 2px rgb(229, 198, 202) }
```

Border

The CSS property to change the border of an element to RYB 229, 198, 202 is called "border". The border property can be set on classes, ids or directly on the HTML element.

This example shows the color as border, it can be applied via the CSS property "border" or "border-color".

```
.border, #border, table{ border:4px solid rgb(229, 198, 202) }
```

If only the border color should be changed use the property `border-color`.

```
.border{ border-color:rgb(229, 198, 202) }
```

If you want to add a box shadow in that color use:

Here you see how a box with a 4 pixel `rgb(229, 198, 202)` colored shadow looks like.

```
.boxshadow{ -moz-box-shadow:4px 4px 4px  
4px rgb(229, 198, 202); -webkit-box-  
shadow:4px 4px 4px 4px rgb(229, 198, 202);  
box-shadow:4px 4px 4px 4px rgb(229, 198,  
202) }
```

Background

The CSS property to change the background color of an element to RYB 229, 198, 202 is called "background". The background property can be set on classes, ids or directly on the HTML element.

```
.background, #background, body{  
background: rgb(229, 198, 202) }
```

If only the background color should be changed can be used:

```
.background{ background-color: rgb(229,  
198, 202) }
```

This example shows the color as background, it is applied via the CSS property "background".

To optimize and compress your CSS code, you can use our [online CSS compressor and optimizer](#) based on csstidy. If you want to create a linear or radial gradient as background or border, check our [CSS Gradient Generator](#).

Hey! You found this booklet interesting? Support Converting Colors with the new Membership Option!

The pro membership hides all ads, plus gives you double the colors in the color bucket, and more awesome pro features!

[Learn more, Memberships starting at \\$2.50/m!](#)

**Follow me
on Twitter!**

@ConvertingColor