

Converting Colors

`RYB(229, 205, 199)`

Have a look what the booklet for
RYB(229, 205, 199) contains.

RYB(229, 205, 199)	3
<i>Conversions</i>	4
<i>Details</i>	6
<i>Harmonies</i>	11
<i>Previews</i>	23
<i>Color Blindness Simulation</i>	26
<i>CSS Examples</i>	29

Color

RYB(229, 205, 199)

Conversions

Conversions Part 1

Format	Color
Hex	E5CCC7
RGB	229, 204, 199
RGB Percent	90%, 80%, 78%
CMY	0.1020, 0.2000, 0.2196
CMYK	0.00, 0.11, 0.13, 0.10
HSL	10°, 37%, 84%
HSV	10°, 13%, 90%
XYZ	64.2148, 63.9673, 62.9953
YIQ	210.9050, 16.5050, 3.7450

Conversions

Conversions Part 2

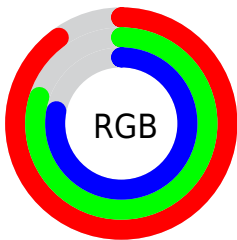
Format	Color
R _Y B	229, 205, 199
Decimal	15060167
CIE Lab	83.95, 7.92, 5.67
CIE LCh	84, 9.743, 35.607
Yxy	63.9673, 0.3359, 0.3346
Android (android.graphics.Color)	4293250247 (0xFFE5CCC7)
YUV	210.9050, -5.8692, 15.8693
Hunter-Lab	79.9795, 3.3517, 9.2864

Details

The RYB color **229, 205, 199** is a light color, and the websafe version is hex **CCCCCC**. A complement of this color would be **199, 213, 229**, and the grayscale version is **211, 211, 211**.

A 20% lighter version of the original color is 255, 255, 255, and **173, 151, 145** is the 20% darker color. If you saturate the color by 10%, you get **229, 187, 176**, and if you desaturate by 10%, it is **229, 223, 222**.

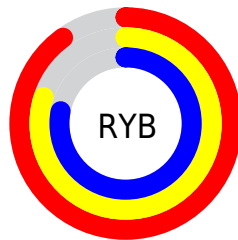
Distribution



Red (90%)

Green (80%)

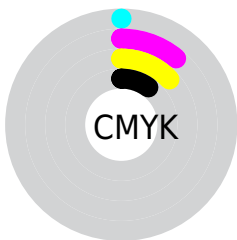
Blue (78%)



Red (90%)

Yellow (80%)

Blue (78%)

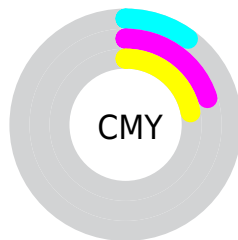


Cyan (0%)

Magenta (11%)

Yellow (13%)

Black (10%)



Cyan (10%)

Magenta (20%)

Yellow (22%)

Brightness & Saturation Gradients

These gradients show how the RYB color 229, 205, 199 changes by changing the brightness by 10 percent. The first figure shows a shift by +10% for each color and the second figure -10%.

Similar to the brightness gradients but the following saturation gradients show a change of the RYB color 229, 205, 199 by changing the saturation by 10% instead.

■ 229, 205, 199

255, 255, 255

■ 229, 205, 199

■ 201, 178, 172

■ 173, 151, 145

■ 147, 125, 120

■ 121, 100, 95

■ 96, 76, 71

■ 72, 54, 49


■ 49, 32, 28

■ 29, 10, 1

■ 0, 0, 0

 229, 205, 199

 229, 205, 199

 229, 187, 176


 229, 223, 222


 229, 169, 153

 229, 236, 245

 229, 151, 130

 229, 242, 255

 229, 132, 107

 229, 114, 84

 229, 96, 62

 229, 76, 39

 229, 58, 16

 229, 46, 0

Harmonies

Analogous

The Analogous color harmony consists of three colors that are next to each other on the color wheel.



229, 203, 208



229, 205, 199



224, 215, 193

Triad

The Triadic color harmony groups three colors that are evenly spaced from another and form a triangle on the color wheel.



229, 205, 199



195, 209, 214



202, 207, 227

Complementary

The Complementary color scheme is a pair of colors which are on the opposite of each other on the color wheel.



229, 205, 199



199, 213, 229

Split Complementary

Split-complementary colors differ from the complementary color scheme. The scheme consists of three colors, the original color and two neighbors of the complement color.



192, 205, 226



229, 205, 199



188, 203, 215

Square

The Square scheme is like the rectangle color scheme, but the four colors are evenly spaced on the color wheel.



229, 205, 199



194, 212, 201



187, 202, 220



213, 206, 224

Rectangle

The Rectangle color scheme consists of four colors that form a rectangle on the color wheel.



229, 205, 199



209, 219, 191



187, 202, 220



198, 207, 227

Sweetspot

The Sweet Spot groups the original color and five complimentary colors.



229, 205, 199



255, 248, 245



229, 199, 224



128, 122, 121



0, 0, 0



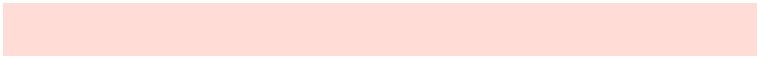
128, 128, 128

Same Dimension

The Same Dimension uses a secret algorithm to generate beautiful new colors.



229, 205, 199



255, 222, 214



214, 229, 199



115, 105, 103



179, 36, 0



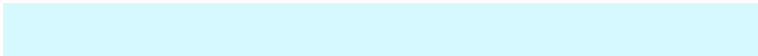
51, 11, 0

Inverse Universe

The Inverse Universe completely reimagines the original color for something new.



199, 213, 229



214, 233, 255



199, 207, 229



103, 108, 115



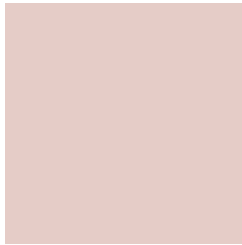
0, 81, 179



0, 23, 51

Previews

White Background



This preview shows how the RYB color 229, 205, 199 looks on a white background.

Color Contrast Check

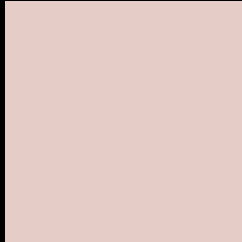
Large Text (above 18pt) WCAG AA × Fail

Any Text WCAG AA × Fail

Large Text (above 18pt) WCAG AAA × Fail

Any Text WCAG AAA × Fail

Black Background



This preview shows how the RYB color 229, 205, 199 looks on a black background.

Color Contrast Check

Large Text (above 18pt) WCAG AA ✓ Pass

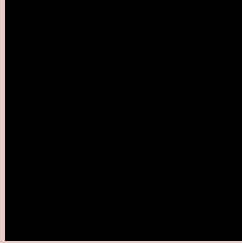
Any Text WCAG AA ✓ Pass

Large Text (above 18pt) WCAG AAA ✓ Pass

Any Text WCAG AAA ✓ Pass

If you want to check with other color combinations, try the [Color Contrast Checker](#).

R Y B 229, 205, 199 Background



This preview shows how black text looks on a background with the RYB color 229, 205, 199.

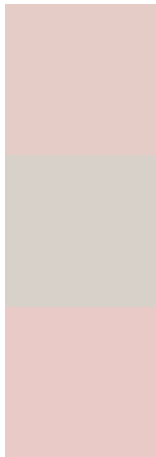


This preview shows how white text looks on a background with the RYB color 229, 205, 199.

Color Blindness Simulation

Color vision deficiency is a very complex topic, and I could not describe the different causes any better than Wikipedia does, so if you want to learn more, you should check out their [article about color blindness](#).

Dichromacy



Original Color

229, 205, 199

Protanopia

213, 215, 202

Deuteranopia

233, 202, 199



Tritanopia
231, 201, 217

Trichromacy



Original Color

229, 205, 199

Protanomaly

220, 210, 201

Deuteranomaly

232, 204, 199

Tritanomaly

230, 202, 210

Monochromacy



Original Color

229, 205, 199

Achromatopsia

211, 211, 211

Achromatomaly

218, 208, 207

CSS Examples

Text

The CSS property to change the color of the text to RYB 229, 205, 199 is called "color". The color property can be set on classes, ids or directly on the HTML element.

This example shows how text in the color `rgb(229, 204, 199)` looks like.

```
.text, #text, p{  
    color:rgb(229, 204, 199)  
}
```

If you want to add a text shadow in that color use the text-shadow property, you can generate a text shadow directly with our [CSS Text Shadow Generator](#).

Here you see how black text with a 4 pixel rgb(229, 204, 199) colored shadow looks like.

```
.shadow{ text-shadow: 4px 4px 2px rgb(229, 204, 199) }
```

Border

The CSS property to change the border of an element to RYB 229, 205, 199 is called "border". The border property can be set on classes, ids or directly on the HTML element.

This example shows the color as border, it can be applied via the CSS property "border" or "border-color".

```
.border, #border, table{ border:4px solid rgb(229, 204, 199) }
```

If only the border color should be changed use the property `border-color`.

```
.border{ border-color:rgb(229, 204, 199) }
```

If you want to add a box shadow in that color use:

Here you see how a box with a 4 pixel `rgb(229, 204, 199)` colored shadow looks like.

```
.boxshadow{ -moz-box-shadow:4px 4px 4px  
4px rgb(229, 204, 199); -webkit-box-  
shadow:4px 4px 4px 4px rgb(229, 204, 199);  
box-shadow:4px 4px 4px 4px rgb(229, 204,  
199) }
```

Background

The CSS property to change the background color of an element to RYB 229, 205, 199 is called "background". The background property can be set on classes, ids or directly on the HTML element.

```
.background, #background, body{  
background: rgb(229, 204, 199) }
```

If only the background color should be changed can be used:

```
.background{ background-color: rgb(229,  
204, 199) }
```

This example shows the color as background, it is applied via the CSS property "background".

To optimize and compress your CSS code, you can use our [online CSS compressor and optimizer](#) based on csstidy. If you want to create a linear or radial gradient as background or border, check our [CSS Gradient Generator](#).

Hey! You found this booklet interesting? Support Converting Colors with the new Membership Option!

The pro membership hides all ads, plus gives you double the colors in the color bucket, and more awesome pro features!

[Learn more, Memberships starting at \\$2.50/m!](#)

**Follow me
on Twitter!**

@ConvertingColor