

Converting Colors

`RYB(230, 204, 206)`

Have a look what the booklet for
RYB(230, 204, 206) contains.

RYB(230, 204, 206)	3
<i>Conversions</i>	4
<i>Details</i>	6
<i>Harmonies</i>	11
<i>Previews</i>	23
<i>Color Blindness Simulation</i>	26
<i>CSS Examples</i>	29

Color

R_YB(230, 204, 206)

Conversions

Conversions Part 1

Format	Color
Hex	E6CCCE
RGB	230, 204, 206
RGB Percent	90%, 80%, 81%
CMY	0.0980, 0.2000, 0.1922
CMYK	0.00, 0.11, 0.10, 0.10
HSL	355°, 34%, 85%
HSV	355°, 11%, 90%
XYZ	65.3666, 64.4650, 67.3903
YIQ	212.0020, 14.8540, 6.1340

Conversions

Conversions Part 2

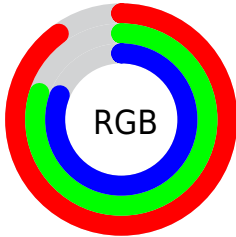
Format	Color
R _Y B	230, 204, 206
Decimal	15125710
CIE Lab	84.21, 9.41, 2.33
CIE LCh	84, 9.699, 13.898
Yxy	64.4650, 0.3314, 0.3269
Android (android.graphics.Color)	4293315790 (0xFFE6CCCE)
YUV	212.0020, -2.9590, 15.7842
Hunter-Lab	80.2901, 4.8146, 6.4388

Details

The RYB color **230, 204, 206** is a light color, and the websafe version is hex **CCCCCC**. A complement of this color would be **204, 218, 230**, and the grayscale version is **212, 212, 212**.

A 20% lighter version of the original color is 255, 255, 255, and **174, 150, 152** is the 20% darker color. If you saturate the color by 10%, you get **230, 181, 185**, and if you desaturate by 10%, it is **230, 227, 227**.

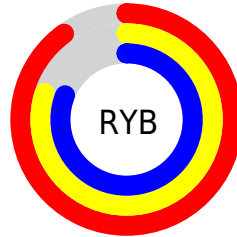
Distribution



Red (90%)

Green (80%)

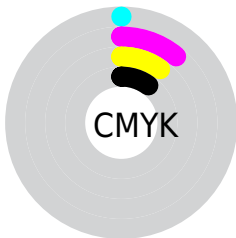
Blue (81%)



Red (90%)

Yellow (80%)

Blue (81%)

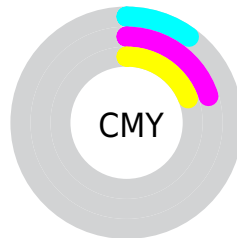


Cyan (0%)

Magenta (11%)

Yellow (10%)

Black (10%)



Cyan (10%)

Magenta (20%)

Yellow (19%)

Brightness & Saturation Gradients

These gradients show how the RYB color 230, 204, 206 changes by changing the brightness by 10 percent. The first figure shows a shift by +10% for each color and the second figure -10%.


Similar to the brightness gradients but the following saturation gradients show a change of the RYB color 230, 204, 206 by changing the saturation by 10% instead.

 230, 204, 206

255, 255, 255

 230, 204, 206

 202, 177, 179

 174, 150, 152

 148, 124, 126

 122, 99, 101

 97, 75, 77

 73, 52, 54


 50, 31, 33

 30, 8, 10


 0, 0, 0

 230, 204, 206


 230, 204, 206

 230, 181, 185


 230, 227, 227


 230, 158, 164

 230, 241, 250

 230, 135, 142

 230, 243, 255

 230, 112, 121

 230, 89, 100

 230, 66, 79

 230, 43, 57

 230, 20, 36

 230, 0, 18

Harmonies

Analogous

The Analogous color harmony consists of three colors that are next to each other on the color wheel.



226, 204, 215



230, 204, 206



229, 207, 198

Triad

The Triadic color harmony groups three colors that are evenly spaced from another and form a triangle on the color wheel.



230, 204, 206



197, 213, 207



195, 206, 227

Complementary

The Complementary color scheme is a pair of colors which are on the opposite of each other on the color wheel.



230, 204, 206



204, 218, 230

Split Complementary

Split-complementary colors differ from the complementary color scheme. The scheme consists of three colors, the original color and two neighbors of the complement color.



189, 204, 222



230, 204, 206



193, 207, 215

Square

The Square scheme is like the rectangle color scheme, but the four colors are evenly spaced on the color wheel.



230, 204, 206



194, 213, 192



188, 203, 216



206, 209, 228

Rectangle

The Rectangle color scheme consists of four colors that form a rectangle on the color wheel.



230, 204, 206



225, 216, 194



188, 203, 216



193, 205, 226

Sweetspot

The Sweet Spot groups the original color and five complimentary colors.



230, 204, 206



255, 247, 248



228, 204, 230



128, 122, 123



0, 0, 0



128, 128, 128

Same Dimension

The Same Dimension uses a secret algorithm to generate beautiful new colors.



230, 204, 206



255, 219, 222



230, 223, 204



115, 103, 104



179, 0, 14



51, 0, 4

Inverse Universe

The Inverse Universe completely reimagines the original color for something new.



230, 204, 206



255, 219, 222



204, 214, 230



115, 103, 104



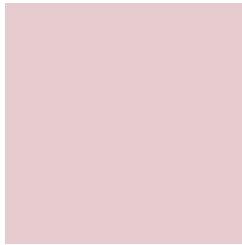
179, 0, 14



51, 0, 4

Previews

White Background



This preview shows how the RYB color 230, 204, 206 looks on a white background.

Color Contrast Check

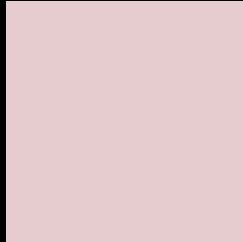
Large Text (above 18pt) WCAG AA × Fail

Any Text WCAG AA × Fail

Large Text (above 18pt) WCAG AAA × Fail

Any Text WCAG AAA × Fail

Black Background



This preview shows how the RYB color 230, 204, 206 looks on a black background.

Color Contrast Check

Large Text (above 18pt) WCAG AA ✓ Pass

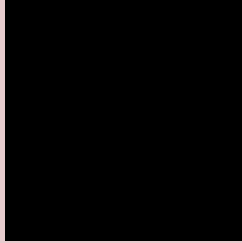
Any Text WCAG AA ✓ Pass

Large Text (above 18pt) WCAG AAA ✓ Pass

Any Text WCAG AAA ✓ Pass

If you want to check with other color combinations, try the [Color Contrast Checker](#).

RVB 230, 204, 206 Background



This preview shows how black text looks on a background with the RYB color 230, 204, 206.



This preview shows how white text looks on a background with the RYB color 230, 204, 206.

Color Blindness Simulation

Color vision deficiency is a very complex topic, and I could not describe the different causes any better than Wikipedia does, so if you want to learn more, you should check out their [article about color blindness](#).

Dichromacy



Original Color
230, 204, 206

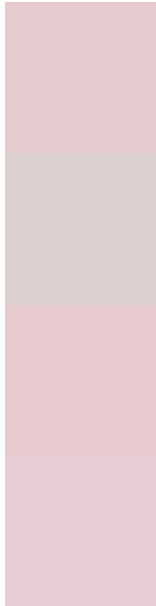
Protanopia
214, 209, 209

Deuteranopia
232, 203, 206



Tritanopia
232, 202, 218

Trichromacy



Original Color

230, 204, 206

Protanomaly

220, 207, 208

Deuteranomaly

231, 203, 206

Tritanomaly

231, 203, 214

Monochromacy



Original Color

230, 204, 206

Achromatopsia

212, 212, 212

Achromatomaly

219, 209, 210

CSS Examples

Text

The CSS property to change the color of the text to RYB 230, 204, 206 is called "color". The color property can be set on classes, ids or directly on the HTML element.

This example shows how text in the color rgb(230, 204, 206) looks like.

```
.text, #text, p{  
    color:rgb(230, 204, 206)  
}
```

If you want to add a text shadow in that color use the text-shadow property, you can generate a text shadow directly with our [CSS Text Shadow Generator](#).

Here you see how black text with a 4 pixel rgb(230, 204, 206) colored shadow looks like.

```
.shadow{ text-shadow: 4px 4px 2px rgb(230, 204, 206) }
```

Border

The CSS property to change the border of an element to RYB 230, 204, 206 is called "border". The border property can be set on classes, ids or directly on the HTML element.

This example shows the color as border, it can be applied via the CSS property "border" or "border-color".

```
.border, #border, table{ border:4px solid rgb(230, 204, 206) }
```

If only the border color should be changed use the property border-color.

```
.border{ border-color:rgb(230, 204, 206) }
```

If you want to add a box shadow in that color use:

Here you see how a box with a 4 pixel rgb(230, 204, 206) colored shadow looks like.

```
.boxshadow{ -moz-box-shadow:4px 4px 4px  
4px rgb(230, 204, 206); -webkit-box-  
shadow:4px 4px 4px 4px rgb(230, 204, 206);  
box-shadow:4px 4px 4px 4px rgb(230, 204,  
206) }
```

Background

The CSS property to change the background color of an element to RGB 230, 204, 206 is called "background". The background property can be set on classes, ids or directly on the HTML element.

```
.background, #background, body{  
background: rgb(230, 204, 206) }
```

If only the background color should be changed can be used:

```
.background{ background-color: rgb(230,  
204, 206) }
```

This example shows the color as background, it is applied via the CSS property "background".

To optimize and compress your CSS code, you can use our [online CSS compressor and optimizer](#) based on csstidy. If you want to create a linear or radial gradient as background or border, check our [CSS Gradient Generator](#).

Hey! You found this booklet interesting? Support Converting Colors with the new Membership Option!

The pro membership hides all ads, plus gives you double the colors in the color bucket, and more awesome pro features!

[Learn more, Memberships starting at \\$2.50/m!](#)

**Follow me
on Twitter!**

@ConvertingColor