

Converting Colors

`RYB(230, 209, 207)`

Have a look what the booklet for
RYB(230, 209, 207) contains.

RYB(230, 209, 207)	3
<i>Conversions</i>	4
<i>Details</i>	6
<i>Harmonies</i>	11
<i>Previews</i>	23
<i>Color Blindness Simulation</i>	26
<i>CSS Examples</i>	29

Color

$\text{RYB}(230, 209, 207)$

Conversions

Conversions Part 1

Format	Color
Hex	E6D1CF
RGB	230, 209, 207
RGB Percent	90%, 82%, 81%
CMY	0.0980, 0.1810, 0.1882
CMYK	0.00, 0.09, 0.10, 0.10
HSL	5°, 32%, 86%
HSV	5°, 10%, 90%
XYZ	66.6568, 66.8504, 68.4217
YIQ	215.0510, 13.1580, 3.8300

Conversions

Conversions Part 2

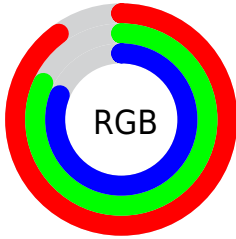
Format	Color
R_{YB}	230, 209, 207
Decimal	15126991
CIE Lab	85.43, 7.04, 3.57
CIE LCh	85, 7.890, 26.900
Yxy	66.8504, 0.3301, 0.3311
Android (android.graphics.Color)	4293317071 (0xFFE6D1CF)
YUV	215.0510, -3.9691, 13.1103
Hunter-Lab	81.7621, 2.4390, 7.6173

Details

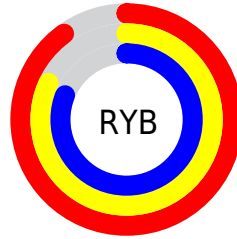
The RYB color **230, 209, 207** is a light color, and the websafe version is hex **CCCCCC**. A complement of this color would be **207, 218, 230**, and the grayscale version is **215, 215, 215**.

A 20% lighter version of the original color is 255, 255, 255, and **174, 155, 153** is the 20% darker color. If you saturate the color by 10%, you get **230, 188, 184**, and if you desaturate by 10%, it is **230, 230, 230**.

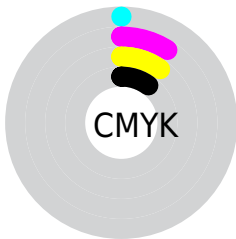
Distribution



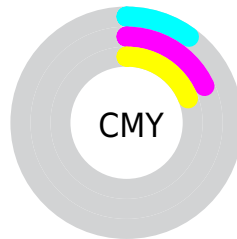
- Red (90%)
- Green (82%)
- Blue (81%)



- Red (90%)
- Yellow (82%)
- Blue (81%)



- Cyan (0%)
- Magenta (9%)
- Yellow (10%)
- Black (10%)



- Cyan (10%)
- Magenta (18%)
- Yellow (19%)

Brightness & Saturation Gradients

These gradients show how the RYB color 230, 209, 207 changes by changing the brightness by 10 percent. The first figure shows a shift by +10% for each color and the second figure -10%.

Similar to the brightness gradients but the following saturation gradients show a change of the RYB color 230, 209, 207 by changing the saturation by 10% instead.

■ 230, 209, 207

255, 255, 255

■ 230, 209, 207

■ 202, 181, 179

■ 174, 154, 153

■ 148, 128, 127

■ 122, 103, 102

■ 97, 79, 78

■ 73, 56, 55


■ 50, 35, 34

■ 30, 15, 11


■ 0, 0, 0

 230, 209, 207


 230, 209, 207

 230, 188, 184


 230, 230, 230


 230, 168, 161

 230, 241, 253

 230, 146, 138

 230, 243, 255

 230, 125, 115

 230, 104, 92

 230, 83, 69

 230, 62, 46

 230, 42, 23

 230, 20, 0

Harmonies

Analogous

The Analogous color harmony consists of three colors that are next to each other on the color wheel.



228, 209, 215



230, 209, 207



227, 215, 201

Triad

The Triadic color harmony groups three colors that are evenly spaced from another and form a triangle on the color wheel.



230, 209, 207



204, 216, 217



205, 211, 228

Complementary

The Complementary color scheme is a pair of colors which are on the opposite of each other on the color wheel.



230, 209, 207



207, 218, 230

Split Complementary

Split-complementary colors differ from the complementary color scheme. The scheme consists of three colors, the original color and two neighbors of the complement color.



198, 209, 226



230, 209, 207



198, 210, 218

Square

The Square scheme is like the rectangle color scheme, but the four colors are evenly spaced on the color wheel.



230, 209, 207



200, 215, 203



195, 207, 220



214, 212, 227

Rectangle

The Rectangle color scheme consists of four colors that form a rectangle on the color wheel.



230, 209, 207



219, 223, 199



195, 207, 220



202, 211, 228

Sweetspot

The Sweet Spot groups the original color and five complimentary colors.



230, 209, 207



255, 248, 247



230, 207, 228



128, 123, 122



0, 0, 0



128, 128, 128

Same Dimension

The Same Dimension uses a secret algorithm to generate beautiful new colors.



230, 209, 207



255, 227, 224



225, 230, 207



115, 104, 103



179, 15, 0



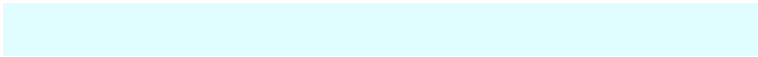
51, 4, 0

Inverse Universe

The Inverse Universe completely reimagines the original color for something new.



207, 218, 230



224, 239, 255



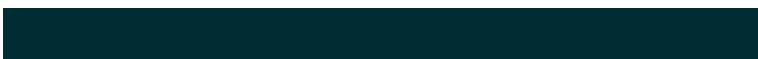
207, 214, 230



103, 109, 115



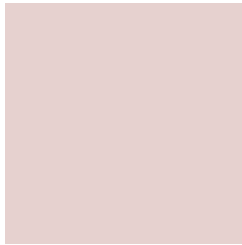
0, 86, 179



0, 24, 51

Previews

White Background



This preview shows how the RYB color 230, 209, 207 looks on a white background.

Color Contrast Check

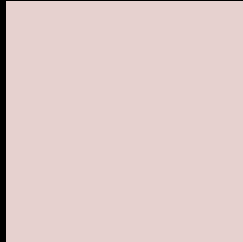
Large Text (above 18pt) WCAG AA × Fail

Any Text WCAG AA × Fail

Large Text (above 18pt) WCAG AAA × Fail

Any Text WCAG AAA × Fail

Black Background



This preview shows how the RYB color 230, 209, 207 looks on a black background.

Color Contrast Check

Large Text (above 18pt) WCAG AA ✓ Pass

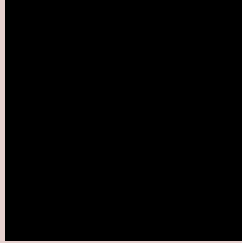
Any Text WCAG AA ✓ Pass

Large Text (above 18pt) WCAG AAA ✓ Pass

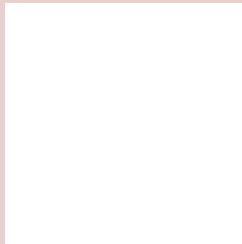
Any Text WCAG AAA ✓ Pass

If you want to check with other color combinations, try the [Color Contrast Checker](#).

RYB 230, 209, 207 Background



This preview shows how black text looks on a background with the RYB color 230, 209, 207.



This preview shows how white text looks on a background with the RYB color 230, 209, 207.

Color Blindness Simulation

Color vision deficiency is a very complex topic, and I could not describe the different causes any better than Wikipedia does, so if you want to learn more, you should check out their [article about color blindness](#).

Dichromacy



Original Color
230, 209, 207

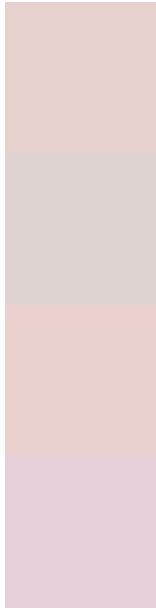
Protanopia
218, 216, 209

Deuteranopia
236, 206, 207



Tritanopia
232, 206, 223

Trichromacy



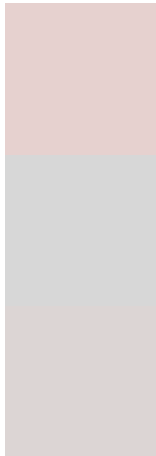
Original Color
230, 209, 207

Protanomaly
222, 212, 208

Deuteranomaly
234, 207, 207

Tritanomaly
231, 207, 217

Monochromacy



Original Color
230, 209, 207

Achromatopsia
215, 215, 215

Achromatomaly
220, 213, 212

CSS Examples

Text

The CSS property to change the color of the text to RYB 230, 209, 207 is called "color". The color property can be set on classes, ids or directly on the HTML element.

This example shows how text in the color rgb(230, 209, 207) looks like.

```
.text, #text, p{  
    color:rgb(230, 209, 207)  
}
```

If you want to add a text shadow in that color use the text-shadow property, you can generate a text shadow directly with our [CSS Text Shadow Generator](#).

Here you see how black text with a 4 pixel rgb(230, 209, 207) colored shadow looks like.

```
.shadow{ text-shadow: 4px 4px 2px rgb(230, 209, 207) }
```

Border

The CSS property to change the border of an element to RYB 230, 209, 207 is called "border". The border property can be set on classes, ids or directly on the HTML element.

This example shows the color as border, it can be applied via the CSS property "border" or "border-color".

```
.border, #border, table{ border:4px solid rgb(230, 209, 207) }
```

If only the border color should be changed use the property `border-color`.

```
.border{ border-color:rgb(230, 209, 207) }
```

If you want to add a box shadow in that color use:

Here you see how a box with a 4 pixel `rgb(230, 209, 207)` colored shadow looks like.

```
.boxshadow{ -moz-box-shadow:4px 4px 4px 4px rgb(230, 209, 207); -webkit-box-shadow:4px 4px 4px 4px rgb(230, 209, 207); box-shadow:4px 4px 4px 4px rgb(230, 209, 207) }
```

Background

The CSS property to change the background color of an element to RGB 230, 209, 207 is called "background". The background property can be set on classes, ids or directly on the HTML element.

```
.background, #background, body{  
background: rgb(230, 209, 207) }
```

If only the background color should be changed can be used:

```
.background{ background-color: rgb(230,  
209, 207) }
```

This example shows the color as background, it is applied via the CSS property "background".

To optimize and compress your CSS code, you can use our [online CSS compressor and optimizer](#) based on csstidy. If you want to create a linear or radial gradient as background or border, check our [CSS Gradient Generator](#).

Hey! You found this booklet interesting? Support Converting Colors with the new Membership Option!

The pro membership hides all ads, plus gives you double the colors in the color bucket, and more awesome pro features!

[Learn more, Memberships starting at \\$2.50/m!](#)

**Follow me
on Twitter!**

@ConvertingColor