

# Converting Colors

`RYB(231, 204, 212)`

Have a look what the booklet for  
RYB(231, 204, 212) contains.

<b>RYB(231, 204, 212)</b> .....	3
<b><i>Conversions</i></b> .....	4
<b><i>Details</i></b> .....	6
<b><i>Harmonies</i></b> .....	11
<b><i>Previews</i></b> .....	23
<b><i>Color Blindness Simulation</i></b> .....	26
<b><i>CSS Examples</i></b> .....	29

# Color

**$\text{RYB}(231, 204, 212)$**

# Conversions

## Conversions Part 1

Format	Color
Hex	E7CCD4
RGB	231, 204, 212
RGB Percent	91%, 80%, 83%
CMY	0.0941, 0.2000, 0.1686
CMYK	0.00, 0.12, 0.08, 0.09
HSL	342°, 36%, 85%
HSV	342°, 12%, 91%
XYZ	66.4315, 64.9281, 71.3184
YIQ	212.9850, 13.5240, 8.2120

# Conversions

## Conversions Part 2

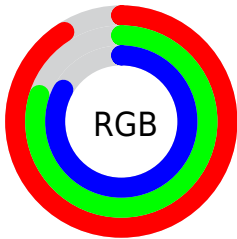
<b>Format</b>	<b>Color</b>
R <sub>Y</sub> B	231, 204, 212
Decimal	15191252
CIE Lab	84.45, 10.77, -0.51
CIE LCh	84, 10.779, 357.304
Yxy	64.9281, 0.3278, 0.3204
Android (android.graphics.Color)	4293381332 (0xFFE7CCD4)
YUV	212.9850, -0.4856, 15.7992
Hunter-Lab	80.5780, 6.1506, 3.9279

# Details

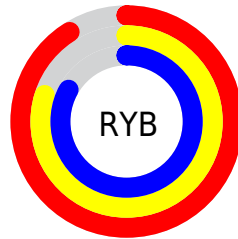
The RYB color **231, 204, 212** is a light color, and the websafe version is hex **FFCCCC**. A complement of this color would be **204, 220, 231**, and the grayscale version is **213, 213, 213**.

A 20% lighter version of the original color is **255, 255, 255**, and **175, 150, 157** is the 20% darker color. If you saturate the color by 10%, you get **231, 181, 196**, and if you desaturate by 10%, it is **231, 227, 228**.

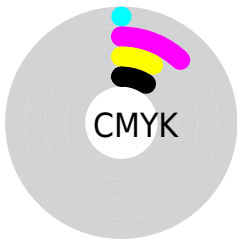
# Distribution



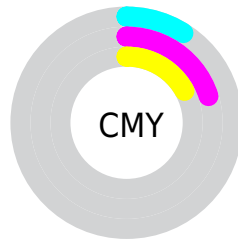
- Red (91%)
- Green (80%)
- Blue (83%)



- Red (91%)
- Yellow (80%)
- Blue (83%)



- Cyan (0%)
- Magenta (12%)
- Yellow (8%)
- Black (9%)



- Cyan (9%)
- Magenta (20%)
- Yellow (17%)

# Brightness & Saturation Gradients

These gradients show how the RYB color 231, 204, 212 changes by changing the brightness by 10 percent. The first figure shows a shift by +10% for each color and the second figure -10%.

Similar to the brightness gradients but the following saturation gradients show a change of the RYB color 231, 204, 212 by changing the saturation by 10% instead.



■ 231, 204, 212

255, 255, 255

■ 231, 204, 212

■ 203, 177, 184

■ 175, 150, 157

■ 149, 124, 131

■ 123, 99, 106

■ 98, 75, 82

■ 74, 52, 59


■ 51, 31, 38


■ 30, 8, 17


■ 0, 0, 0


 231, 204, 212


 231, 204, 212

 231, 181, 196


 231, 227, 228


 231, 158, 179


 231, 242, 250

 231, 135, 163

 231, 243, 255

 231, 112, 147

 231, 89, 131

 231, 65, 114

 231, 42, 98

 231, 19, 82

 231, 0, 68

# Harmonies

## Analogous

The Analogous color harmony consists of three colors that are next to each other on the color wheel.



223, 206, 222



231, 204, 212



233, 204, 202

# Triad

The Triadic color harmony groups three colors that are evenly spaced from another and form a triangle on the color wheel.



231, 204, 212



193, 213, 197



189, 204, 227

# Complementary

The Complementary color scheme is a pair of colors which are on the opposite of each other on the color wheel.



231, 204, 212



204, 220, 231

# Split Complementary

Split-complementary colors differ from the complementary color scheme. The scheme consists of three colors, the original color and two neighbors of the complement color.



186, 202, 220



231, 204, 212



197, 214, 216

# Square

The Square scheme is like the rectangle color scheme, but the four colors are evenly spaced on the color wheel.



231, 204, 212



206, 220, 191



189, 205, 217



199, 208, 231

# Rectangle

The Rectangle color scheme consists of four colors that form a rectangle on the color wheel.



231, 204, 212



231, 210, 196



189, 205, 217



187, 203, 225



# Sweetspot

The Sweet Spot groups the original color and five complimentary colors.



231, 204, 212



255, 245, 248



223, 204, 231



128, 121, 123



0, 0, 0



128, 128, 128



# Same Dimension

The Same Dimension uses a secret algorithm to generate beautiful new colors.



231, 204, 212



255, 219, 230



231, 210, 204



115, 103, 107



179, 0, 53



51, 0, 15



# Inverse Universe

The Inverse Universe completely reimagines the original color for something new.



231, 204, 212



255, 219, 230



204, 216, 231



115, 103, 107



179, 0, 53

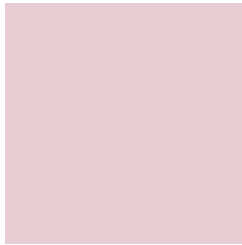


51, 0, 15



# Previews

## White Background



This preview shows how the RYB color 231, 204, 212 looks on a white background.

## Color Contrast Check

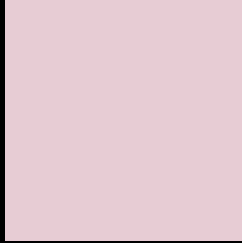
Large Text (above 18pt) WCAG AA × Fail

Any Text WCAG AA × Fail

Large Text (above 18pt) WCAG AAA × Fail

Any Text WCAG AAA × Fail

# Black Background



This preview shows how the RYB color 231, 204, 212 looks on a black background.

## Color Contrast Check

Large Text (above 18pt) WCAG AA ✓ Pass

Any Text WCAG AA ✓ Pass

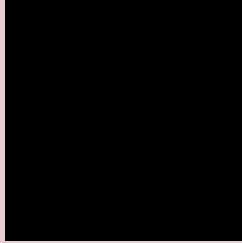
Large Text (above 18pt) WCAG AAA ✓ Pass

Any Text WCAG AAA ✓ Pass

If you want to check with other color combinations, try the [Color Contrast Checker](#).



## **RYB 231, 204, 212 Background**



This preview shows how black text looks on a background with the RYB color 231, 204, 212.



This preview shows how white text looks on a background with the RYB color 231, 204, 212.

# Color Blindness Simulation

Color vision deficiency is a very complex topic, and I could not describe the different causes any better than Wikipedia does, so if you want to learn more, you should check out their [article about color blindness](#).

## Dichromacy



**Original Color**  
231, 204, 212

**Protanopia**  
213, 210, 215

**Deuteranopia**  
231, 204, 212



**Tritanopia**  
232, 203, 219

# Trichromacy



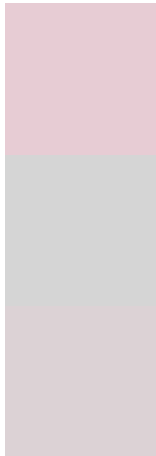
**Original Color**  
231, 204, 212

**Protanomaly**  
220, 208, 214

**Deuteranomaly**  
231, 204, 212

**Tritanomaly**  
232, 203, 216

# Monochromacy



**Original Color**  
231, 204, 212

**Achromatopsia**  
213, 213, 213

**Achromatomaly**  
220, 210, 213

# CSS Examples

## Text

The CSS property to change the color of the text to RYB 231, 204, 212 is called "color". The color property can be set on classes, ids or directly on the HTML element.

This example shows how text in the color rgb(231, 204, 212) looks like.

```
.text, #text, p{  
    color:rgb(231, 204, 212)  
}
```

If you want to add a text shadow in that color use the text-shadow property, you can generate a text shadow directly with our [CSS Text Shadow Generator](#).

Here you see how black text with a 4 pixel rgb(231, 204, 212) colored shadow looks like.

```
.shadow{ text-shadow: 4px 4px 2px rgb(231, 204, 212) }
```

## Border

The CSS property to change the border of an element to RYB 231, 204, 212 is called "border". The border property can be set on classes, ids or directly on the HTML element.

This example shows the color as border, it can be applied via the CSS property "border" or "border-color".

```
.border, #border, table{ border:4px solid rgb(231, 204, 212) }
```

If only the border color should be changed use the property `border-color`.

```
.border{ border-color:rgb(231, 204, 212) }
```

If you want to add a box shadow in that color use:

Here you see how a box with a 4 pixel `rgb(231, 204, 212)` colored shadow looks like.

```
.boxshadow{ -moz-box-shadow:4px 4px 4px  
4px rgb(231, 204, 212); -webkit-box-  
shadow:4px 4px 4px 4px rgb(231, 204, 212);  
box-shadow:4px 4px 4px 4px rgb(231, 204,  
212) }
```

# Background

The CSS property to change the background color of an element to RYB 231, 204, 212 is called "background". The background property can be set on classes, ids or directly on the HTML element.

```
.background, #background, body{  
background: rgb(231, 204, 212) }
```

If only the background color should be changed can be used:

```
.background{ background-color: rgb(231,  
204, 212) }
```

This example shows the color as background, it is applied via the CSS property "background".

To optimize and compress your CSS code, you can use our [online CSS compressor and optimizer](#) based on csstidy. If you want to create a linear or radial gradient as background or border, check our [CSS Gradient Generator](#).



Hey! You found this booklet interesting? Support Converting Colors with the new Membership Option!

The pro membership hides all ads, plus gives you double the colors in the color bucket, and more awesome pro features!

**[Learn more, Memberships starting at \\$2.50/m!](#)**

**Follow me  
on Twitter!**

@ConvertingColor