

Converting Colors

`RYB(232, 101, 147)`

Have a look what the booklet for
RYB(232, 101, 147) contains.

RYB(232, 101, 147)	3
<i>Conversions</i>	4
<i>Details</i>	6
<i>Harmonies</i>	11
<i>Previews</i>	23
<i>Color Blindness Simulation</i>	26
<i>CSS Examples</i>	29

Color

`RYB(232, 101, 147)`

Conversions

Conversions Part 1

Format	Color
Hex	E86593
RGB	232, 101, 147
RGB Percent	91%, 40%, 58%
CMY	0.0902, 0.6039, 0.4235
CMYK	0.00, 0.56, 0.37, 0.09
HSL	339°, 74%, 65%
HSV	339°, 56%, 91%
XYZ	43.1989, 28.5697, 30.8414
YIQ	145.4130, 63.3100, 42.0780

Conversions

Conversions Part 2

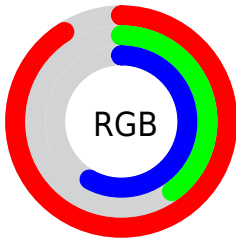
Format	Color
RYB	232, 101, 147
Decimal	15230355
CIELab	60.40, 55.12, 0.38
CIElCh	60, 55.118, 0.392
Yxy	28.5697, 0.4210, 0.2784
Android (android.graphics.Color)	4293420435 (0xFFE86593)
YUV	145.4130, 0.7824, 75.9368
Hunter-Lab	53.4507, 50.7251, 3.2047

Details

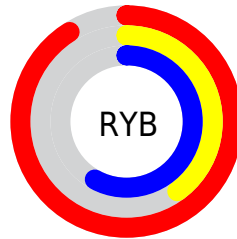
The RYB color **232, 101, 147** is a light color, and the websafe version is hex **FF6699**. A complement of this color would be **101, 180, 232**, and the grayscale version is **145, 145, 145**.

A 20% lighter version of the original color is **255, 156, 201**, and **172, 44, 97** is the 20% darker color. If you saturate the color by 10%, you get **232, 78, 132**, and if you desaturate by 10%, it is **232, 124, 162**.

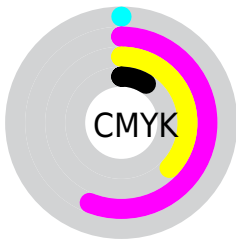
Distribution



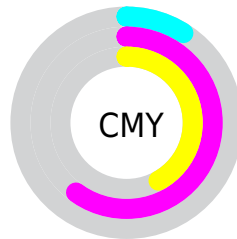
- Red (91%)
- Green (40%)
- Blue (58%)



- Red (91%)
- Yellow (40%)
- Blue (58%)



- Cyan (0%)
- Magenta (56%)
- Yellow (37%)
- Black (9%)



- Cyan (9%)
- Magenta (60%)
- Yellow (42%)

Brightness & Saturation Gradients

These gradients show how the RYB color 232, 101, 147 changes by changing the brightness by 10 percent. The first figure shows a shift by +10% for each color and the second figure -10%.

Similar to the brightness gradients but the following saturation gradients show a change of the RYB color 232, 101, 147 by changing the saturation by 10% instead.

 232, 101, 147

255, 255, 255

 255, 156, 201

 255, 185, 229

 255, 213, 255


 255, 243, 255

 232, 101, 147

 202, 73, 121

 172, 44, 97

 143, 2, 73

 115, 0, 51

 87, 0, 30

 62, 0, 3

 27, 0, 1

 0, 0, 0

 232, 101, 147

 232, 101, 147

■ 232, 78, 132

■ 232, 124, 162

■ 232, 55, 117

■ 232, 147, 177

■ 232, 31, 102

■ 232, 171, 192

■ 232, 8, 87

■ 232, 194, 207

■ 232, 0, 81

■ 232, 217, 222

■ 232, 237, 240

■ 232, 244, 255

■ 232, 244, 255

Harmonies

Analogous

The Analogous color harmony consists of three colors that are next to each other on the color wheel.



205, 112, 194



232, 101, 147



232, 108, 99

Triad

The Triadic color harmony groups three colors that are evenly spaced from another and form a triangle on the color wheel.



232, 101, 147



56, 157, 91



0, 95, 230

Complementary

The Complementary color scheme is a pair of colors which are on the opposite of each other on the color wheel.



232, 101, 147



101, 180, 232

Split Complementary

Split-complementary colors differ from the complementary color scheme. The scheme consists of three colors, the original color and two neighbors of the complement color.



0, 90, 193



232, 101, 147



50, 133, 165

Square

The Square scheme is like the rectangle color scheme, but the four colors are evenly spaced on the color wheel.



232, 101, 147



76, 171, 40



0, 91, 169



4, 95, 243

Rectangle

The Rectangle color scheme consists of four colors that form a rectangle on the color wheel.



232, 101, 147



219, 141, 72



0, 91, 169



0, 94, 220

Sweetspot

The Sweet Spot groups the original color and five complimentary colors.



232, 101, 147



255, 212, 227



184, 101, 232



128, 102, 111



0, 0, 0



128, 128, 128

Same Dimension

The Same Dimension uses a secret algorithm to generate beautiful new colors.



232, 101, 147



255, 82, 142



232, 121, 101



115, 103, 107



179, 0, 63



51, 0, 18

Inverse Universe

The Inverse Universe completely reimagines the original color for something new.



232, 101, 147



255, 82, 142



101, 162, 232



115, 103, 107



179, 0, 63



51, 0, 18

Previews

White Background



This preview shows how the RYB color 232, 101, 147 looks on a white background.

Color Contrast Check

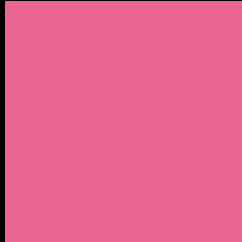
Large Text (above 18pt) WCAG AA ✓ Pass

Any Text WCAG AA × Fail

Large Text (above 18pt) WCAG AAA × Fail

Any Text WCAG AAA × Fail

Black Background



This preview shows how the RYB color 232, 101, 147 looks on a black background.

Color Contrast Check

Large Text (above 18pt) WCAG AA ✓ Pass

Any Text WCAG AA ✓ Pass

Large Text (above 18pt) WCAG AAA ✓ Pass

Any Text WCAG AAA × Fail

If you want to check with other color combinations, try the [Color Contrast Checker](#).

RYB 232, 101, 147 Background



This preview shows how black text looks on a background with the RYB color 232, 101, 147.

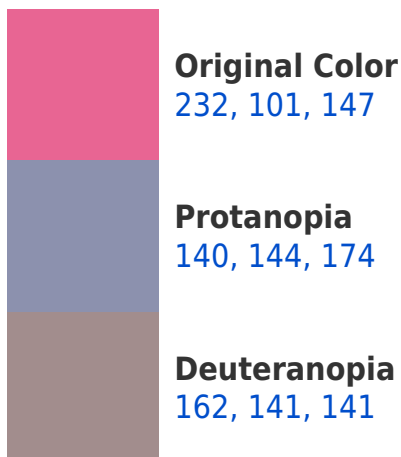


This preview shows how white text looks on a background with the RYB color 232, 101, 147.

Color Blindness Simulation

Color vision deficiency is a very complex topic, and I could not describe the different causes any better than Wikipedia does, so if you want to learn more, you should check out their [article about color blindness](#).

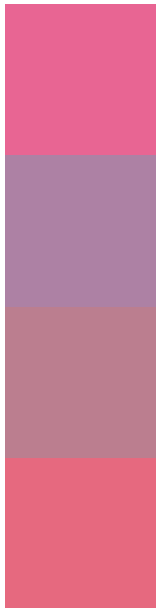
Dichromacy





Tritanopia
229, 107, 115

Trichromacy



Original Color
232, 101, 147

Protanomaly
173, 129, 164

Deuteranomaly
187, 126, 143

Tritanomaly
230, 105, 127

Monochromacy



Original Color
232, 101, 147

Achromatopsia
145, 145, 145

Achromatomaly
177, 129, 146

CSS Examples

Text

The CSS property to change the color of the text to RYB 232, 101, 147 is called "color". The color property can be set on classes, ids or directly on the HTML element.

This example shows how text in the color rgb(232, 101, 147) looks like.

```
.text, #text, p{  
    color:rgb(232, 101, 147)  
}
```

If you want to add a text shadow in that color use the text-shadow property, you can generate a text shadow directly with our [CSS Text Shadow Generator](#).

Here you see how black text with a 4 pixel rgb(232, 101, 147) colored shadow looks like.

```
.shadow{ text-shadow: 4px 4px 2px rgb(232, 101, 147) }
```

Border

The CSS property to change the border of an element to RYB 232, 101, 147 is called "border". The border property can be set on classes, ids or directly on the HTML element.

This example shows the color as border, it can be applied via the CSS property "border" or "border-color".

```
.border, #border, table{ border:4px solid rgb(232, 101, 147) }
```

If only the border color should be changed use the property `border-color`.

```
.border{ border-color:rgb(232, 101, 147) }
```

If you want to add a box shadow in that color use:

Here you see how a box with a 4 pixel `rgb(232, 101, 147)` colored shadow looks like.

```
.boxshadow{ -moz-box-shadow:4px 4px 4px  
4px rgb(232, 101, 147); -webkit-box-  
shadow:4px 4px 4px 4px rgb(232, 101, 147);  
box-shadow:4px 4px 4px 4px rgb(232, 101,  
147) }
```

Background

The CSS property to change the background color of an element to RGB 232, 101, 147 is called "background". The background property can be set on classes, ids or directly on the HTML element.

```
.background, #background, body{  
background: rgb(232, 101, 147) }
```

If only the background color should be changed can be used:

```
.background{ background-color: rgb(232,  
101, 147) }
```

This example shows the color as background, it is applied via the CSS property "background".

To optimize and compress your CSS code, you can use our [online CSS compressor and optimizer](#) based on csstidy. If you want to create a linear or radial gradient as background or border, check our [CSS Gradient Generator](#).

Hey! You found this booklet interesting? Support Converting Colors with the new Membership Option!

The pro membership hides all ads, plus gives you double the colors in the color bucket, and more awesome pro features!

[Learn more, Memberships starting at \\$2.50/m!](#)

**Follow me
on Twitter!**

@ConvertingColor