

Converting Colors

`RYB(232, 158, 179)`

Have a look what the booklet for RYB(232, 158, 179) contains.

RYB(232, 158, 179)	3
<i>Conversions</i>	4
<i>Details</i>	6
<i>Harmonies</i>	11
<i>Previews</i>	23
<i>Color Blindness Simulation</i>	26
<i>CSS Examples</i>	29

Color

R_YB(232, 158, 179)

Conversions

Conversions Part 1

Format	Color
Hex	E89EB3
RGB	232, 158, 179
RGB Percent	91%, 62%, 70%
CMY	0.0902, 0.3804, 0.2980
CMYK	0.00, 0.32, 0.23, 0.09
HSL	343°, 62%, 76%
HSV	343°, 32%, 91%
XYZ	53.6423, 44.8642, 48.4802
YIQ	182.5200, 37.3630, 22.2190

Conversions

Conversions Part 2

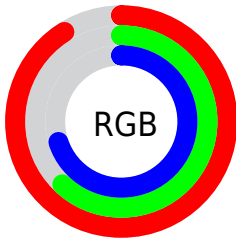
Format	Color
R _Y B	232, 158, 179
Decimal	15244979
CIE Lab	72.80, 30.43, 0.39
CIE LCh	73, 30.433, 0.728
Yxy	44.8642, 0.3649, 0.3052
Android (android.graphics.Color)	4293435059 (0xFFE89EB3)
YUV	182.5200, -1.7354, 43.3940
Hunter-Lab	66.9807, 25.7374, 3.9728

Details

The RYB color **232, 158, 179** is a light color, and the websafe version is hex **CC9999**. A complement of this color would be **158, 201, 232**, and the grayscale version is **183, 183, 183**.

A 20% lighter version of the original color is **255, 213, 235**, and **175, 106, 126** is the 20% darker color. If you saturate the color by 10%, you get **232, 135, 162**, and if you desaturate by 10%, it is **232, 181, 196**.

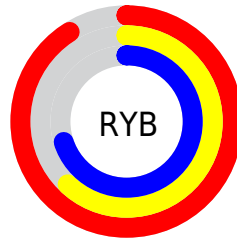
Distribution



Red (91%)

Green (62%)

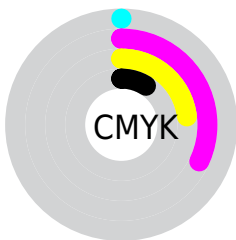
Blue (70%)



Red (91%)

Yellow (62%)

Blue (70%)

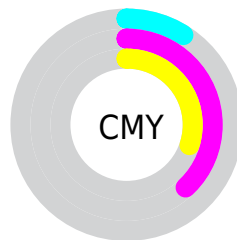


Cyan (0%)

Magenta (32%)

Yellow (23%)

Black (9%)



Cyan (9%)

Magenta (38%)

Yellow (30%)

Brightness & Saturation Gradients

These gradients show how the RYB color 232, 158, 179 changes by changing the brightness by 10 percent. The first figure shows a shift by +10% for each color and the second figure -10%.

Similar to the brightness gradients but the following saturation gradients show a change of the RYB color 232, 158, 179 by changing the saturation by 10% instead.

 232, 158, 179

255, 255, 255

 255, 213, 235

 255, 242, 255

 232, 158, 179

 203, 131, 152

 175, 106, 126

 147, 81, 101

 121, 56, 78

 94, 33, 55

 69, 7, 34

 46, 0, 11

 0, 0, 0

 232, 158, 179

 232, 158, 179

■ 232, 135, 162

■ 232, 181, 196

■ 232, 112, 146

■ 232, 204, 212

■ 232, 88, 129

■ 232, 228, 229

■ 232, 65, 113

■ 232, 243, 251

■ 232, 42, 96

■ 232, 244, 255

■ 232, 19, 79

■ 232, 0, 66

Harmonies

Analogous

The Analogous color harmony consists of three colors that are next to each other on the color wheel.



215, 162, 206



232, 158, 179



233, 161, 152

Triad

The Triadic color harmony groups three colors that are evenly spaced from another and form a triangle on the color wheel.



232, 158, 179



130, 186, 148



106, 155, 226

Complementary

The Complementary color scheme is a pair of colors which are on the opposite of each other on the color wheel.



232, 158, 179



158, 201, 232

Split Complementary

Split-complementary colors differ from the complementary color scheme. The scheme consists of three colors, the original color and two neighbors of the complement color.



90, 145, 206



232, 158, 179



136, 179, 191

Square

The Square scheme is like the rectangle color scheme, but the four colors are evenly spaced on the color wheel.



232, 158, 179



152, 198, 123



106, 154, 194



144, 170, 234

Rectangle

The Rectangle color scheme consists of four colors that form a rectangle on the color wheel.



232, 158, 179



226, 178, 137



106, 154, 194



97, 150, 221

Sweetspot

The Sweet Spot groups the original color and five complimentary colors.



232, 158, 179



255, 230, 237



210, 158, 232



128, 112, 117



0, 0, 0



128, 128, 128

Same Dimension

The Same Dimension uses a secret algorithm to generate beautiful new colors.



232, 158, 179



255, 158, 186



232, 177, 158



115, 103, 107



179, 0, 51



51, 0, 14

Inverse Universe

The Inverse Universe completely reimagines the original color for something new.



232, 158, 179



255, 158, 186



158, 191, 232



115, 103, 107



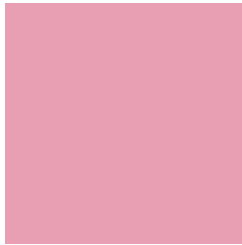
179, 0, 51



51, 0, 14

Previews

White Background



This preview shows how the RYB color 232, 158, 179 looks on a white background.

Color Contrast Check

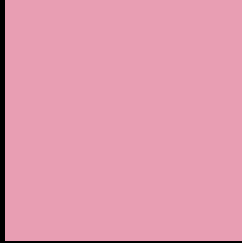
Large Text (above 18pt) WCAG AA × Fail

Any Text WCAG AA × Fail

Large Text (above 18pt) WCAG AAA × Fail

Any Text WCAG AAA × Fail

Black Background



This preview shows how the RYB color 232, 158, 179 looks on a black background.

Color Contrast Check

Large Text (above 18pt) WCAG AA ✓ Pass

Any Text WCAG AA ✓ Pass

Large Text (above 18pt) WCAG AAA ✓ Pass

Any Text WCAG AAA ✓ Pass

If you want to check with other color combinations, try the [Color Contrast Checker](#).

RYB 232, 158, 179 Background



This preview shows how black text looks on a background with the RYB color 232, 158, 179.

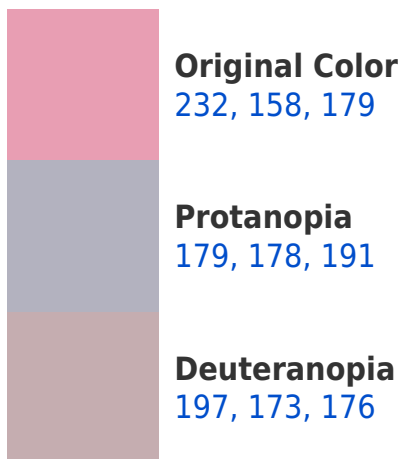



This preview shows how white text looks on a background with the RYB color 232, 158, 179.

Color Blindness Simulation

Color vision deficiency is a very complex topic, and I could not describe the different causes any better than Wikipedia does, so if you want to learn more, you should check out their [article about color blindness](#).

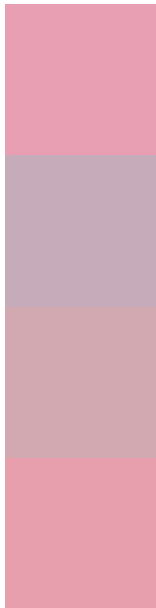
Dichromacy





Tritanopia
231, 159, 171

Trichromacy



Original Color
232, 158, 179

Protanomaly
198, 171, 187

Deuteranomaly
210, 168, 177

Tritanomaly
231, 159, 174

Monochromacy



Original Color
232, 158, 179

Achromatopsia
183, 183, 183

Achromatomaly
201, 174, 182

CSS Examples

Text

The CSS property to change the color of the text to RGB 232, 158, 179 is called "color". The color property can be set on classes, ids or directly on the HTML element.

This example shows how text in the color rgb(232, 158, 179) looks like.

```
.text, #text, p{  
    color:rgb(232, 158, 179)  
}
```

If you want to add a text shadow in that color use the text-shadow property, you can generate a text shadow directly with our [CSS Text Shadow Generator](#).

Here you see how black text with a 4 pixel rgb(232, 158, 179) colored shadow looks like.

```
.shadow{ text-shadow: 4px 4px 2px rgb(232, 158, 179) }
```

Border

The CSS property to change the border of an element to RYB 232, 158, 179 is called "border". The border property can be set on classes, ids or directly on the HTML element.

This example shows the color as border, it can be applied via the CSS property "border" or "border-color".

```
.border, #border, table{ border:4px solid rgb(232, 158, 179) }
```

If only the border color should be changed use the property `border-color`.

```
.border{ border-color:rgb(232, 158, 179) }
```

If you want to add a box shadow in that color use:

Here you see how a box with a 4 pixel `rgb(232, 158, 179)` colored shadow looks like.

```
.boxshadow{ -moz-box-shadow:4px 4px 4px  
4px rgb(232, 158, 179); -webkit-box-  
shadow:4px 4px 4px 4px rgb(232, 158, 179);  
box-shadow:4px 4px 4px 4px rgb(232, 158,  
179) }
```

Background

The CSS property to change the background color of an element to RGB 232, 158, 179 is called "background". The background property can be set on classes, ids or directly on the HTML element.

```
.background, #background, body{  
background: rgb(232, 158, 179) }
```

If only the background color should be changed can be used:

```
.background{ background-color: rgb(232,  
158, 179) }
```

This example shows the color as background, it is applied via the CSS property "background".

To optimize and compress your CSS code, you can use our [online CSS compressor and optimizer](#) based on csstidy. If you want to create a linear or radial gradient as background or border, check our [CSS Gradient Generator](#).

Hey! You found this booklet interesting? Support Converting Colors with the new Membership Option!

The pro membership hides all ads, plus gives you double the colors in the color bucket, and more awesome pro features!

[Learn more, Memberships starting at \\$2.50/m!](#)

**Follow me
on Twitter!**

@ConvertingColor