

Converting Colors

`RYB(232, 73, 114)`

Have a look what the booklet for
RYB(232, 73, 114) contains.

| | |
|--|----|
| RYB(232, 73, 114) | 3 |
| <i>Conversions</i> | 4 |
| <i>Details</i> | 6 |
| <i>Harmonies</i> | 11 |
| <i>Previews</i> | 23 |
| <i>Color Blindness Simulation</i> | 26 |
| <i>CSS Examples</i> | 29 |

Color

`RYB(232, 73, 114)`

Conversions

Conversions Part 1

| Format | Color |
|-------------|----------------------------|
| Hex | E84972 |
| RGB | 232, 73, 114 |
| RGB Percent | 91%, 29%, 45% |
| CMY | 0.0902, 0.7137, 0.5529 |
| CMYK | 0.00, 0.69, 0.51, 0.09 |
| HSL | 345°, 78%, 60% |
| HSV | 345°, 69%, 91% |
| XYZ | 38.6985, 23.1358, 18.3456 |
| YIQ | 125.2150, 81.6030, 46.4590 |

Conversions

Conversions Part 2

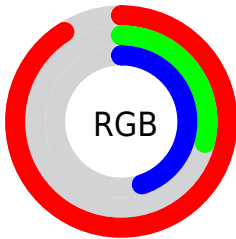
| Format | Color |
|-------------------------------------|-------------------------------|
| R_{YB} | 232, 73, 114 |
| Decimal | 15223154 |
| CIE _{Lab} | 55.21, 63.64, 12.32 |
| CIE _{LCh} | 55, 64.818, 10.953 |
| Yxy | 23.1358, 0.4826, 0.2885 |
| Android (android.graphics.Color) | 4293413234 (0xFFE84972) |
| YUV | 125.2150, -5.5290, 93.6504 |
| Hunter-Lab | 48.0997, 59.4374, 11.0561 |

Details

The RYB color **232, 73, 114** is a dark color, and the websafe version is hex **CC3366**. The color can be described as middle muted rose. A complement of this color would be **73, 164, 232**, and the grayscale version is **125, 125, 125**.

A 20% lighter version of the original color is **255, 131, 166**, and **171, 0, 66** is the 20% darker color. If you saturate the color by 10%, you get **232, 50, 97**, and if you desaturate by 10%, it is **232, 96, 131**.

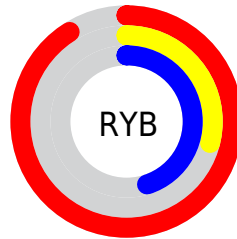
Distribution



Red (91%)

Green (29%)

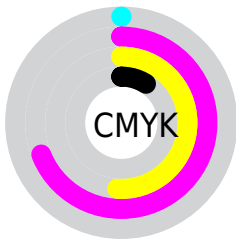
Blue (45%)



Red (91%)

Yellow (29%)

Blue (45%)

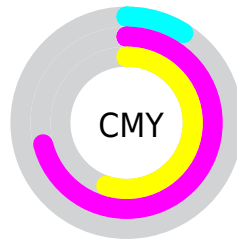


Cyan (0%)

Magenta (69%)

Yellow (51%)

Black (9%)



Cyan (9%)

Magenta (71%)

Yellow (55%)

Brightness & Saturation Gradients

These gradients show how the RYB color 232, 73, 114 changes by changing the brightness by 10 percent. The first figure shows a shift by +10% for each color and the second figure -10%.

Similar to the brightness gradients but the following saturation gradients show a change of the RYB color 232, 73, 114 by changing the saturation by 10% instead.



232, 73, 114



232, 73, 114

255, 255, 255



201, 40, 90



255, 131, 166



171, 0, 66



255, 160, 193



140, 0, 45



255, 189, 220



110, 0, 25



255, 218, 249



81, 0, 1



255, 248, 255



52, 0, 2



0, 0, 0



232, 73, 114



232, 73, 114




232, 50, 97




232, 96, 131


 232, 27, 80


 232, 119, 148

 232, 3, 62

 232, 143, 166

 232, 0, 60

 232, 166, 183

 232, 189, 200

 232, 212, 217

 232, 234, 235

 232, 244, 255

 232, 244, 255

Harmonies

Analogous

The Analogous color harmony consists of three colors that are next to each other on the color wheel.



214, 81, 170



232, 73, 114



221, 98, 61

Triad

The Triadic color harmony groups three colors that are evenly spaced from another and form a triangle on the color wheel.



232, 73, 114



37, 149, 110



0, 91, 239

Complementary

The Complementary color scheme is a pair of colors which are on the opposite of each other on the color wheel.



232, 73, 114



73, 164, 232

Split Complementary

Split-complementary colors differ from the complementary color scheme. The scheme consists of three colors, the original color and two neighbors of the complement color.



0, 89, 205



232, 73, 114



0, 98, 156

Square

The Square scheme is like the rectangle color scheme, but the four colors are evenly spaced on the color wheel.



232, 73, 114



4, 140, 0



0, 81, 158



19, 94, 243

Rectangle

The Rectangle color scheme consists of four colors that form a rectangle on the color wheel.



232, 73, 114



200, 179, 27



0, 81, 158



0, 92, 230

Sweetspot

The Sweet Spot groups the original color and five complimentary colors.



232, 73, 114



255, 201, 215



190, 73, 232



128, 96, 104



0, 0, 0



128, 128, 128

Same Dimension

The Same Dimension uses a secret algorithm to generate beautiful new colors.



232, 73, 114



255, 46, 100



232, 121, 73



115, 103, 106



179, 0, 46



51, 0, 13

Inverse Universe

The Inverse Universe completely reimagines the original color for something new.



232, 73, 114



255, 46, 100



73, 142, 232



115, 103, 106



179, 0, 46



51, 0, 13

Previews

White Background



This preview shows how the RYB color 232, 73, 114 looks on a white background.

Color Contrast Check

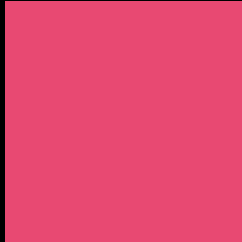
Large Text (above 18pt) WCAG AA ✓ Pass

Any Text WCAG AA ✗ Fail

Large Text (above 18pt) WCAG AAA ✗ Fail

Any Text WCAG AAA ✗ Fail

Black Background



This preview shows how the RYB color 232, 73, 114 looks on a black background.

Color Contrast Check

Large Text (above 18pt) WCAG AA ✓ Pass

Any Text WCAG AA ✓ Pass

Large Text (above 18pt) WCAG AAA ✓ Pass

Any Text WCAG AAA × Fail

If you want to check with other color combinations, try the [Color Contrast Checker](#).

RGB 232, 73, 114 Background



This preview shows how black text looks on a background with the RGB color 232, 73, 114.



This preview shows how white text looks on a background with the RGB color 232, 73, 114.

Color Blindness Simulation

Color vision deficiency is a very complex topic, and I could not describe the different causes any better than Wikipedia does, so if you want to learn more, you should check out their [article about color blindness](#).

Dichromacy



Original Color
232, 73, 114

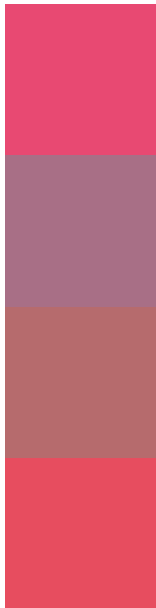
Protanopia
131, 132, 145

Deuteranopia
154, 143, 106



Tritanopia
230, 79, 84

Trichromacy



Original Color
232, 73, 114

Protanomaly
168, 111, 134

Deuteranomaly
182, 107, 109

Tritanomaly
231, 77, 95

Monochromacy



Original Color
232, 73, 114

Achromatopsia
125, 125, 125

Achromatomaly
164, 106, 121

CSS Examples

Text

The CSS property to change the color of the text to RYB 232, 73, 114 is called "color". The color property can be set on classes, ids or directly on the HTML element.

This example shows how text in the color `rgb(232, 73, 114)` looks like.

```
.text, #text, p{  
    color:rgb(232, 73, 114)  
}
```

If you want to add a text shadow in that color use the text-shadow property, you can generate a text shadow directly with our [CSS Text Shadow Generator](#).

Here you see how black text with a 4 pixel rgb(232, 73, 114) colored shadow looks like.

```
.shadow{ text-shadow: 4px 4px 2px rgb(232, 73, 114) }
```

Border

The CSS property to change the border of an element to RYB 232, 73, 114 is called "border". The border property can be set on classes, ids or directly on the HTML element.

This example shows the color as border, it can be applied via the CSS property "border" or "border-color".

```
.border, #border, table{ border:4px solid rgb(232, 73, 114) }
```

If only the border color should be changed use the property border-color.

```
.border{ border-color:rgb(232, 73, 114) }
```

If you want to add a box shadow in that color use:

Here you see how a box with a 4 pixel rgb(232, 73, 114) colored shadow looks like.

```
.boxshadow{ -moz-box-shadow:4px 4px 4px  
4px rgb(232, 73, 114); -webkit-box-  
shadow:4px 4px 4px 4px rgb(232, 73, 114);  
box-shadow:4px 4px 4px 4px rgb(232, 73,  
114) }
```

Background

The CSS property to change the background color of an element to RGB 232, 73, 114 is called "background". The background property can be set on classes, ids or directly on the HTML element.

```
.background, #background, body{  
background: rgb(232, 73, 114) }
```

If only the background color should be changed can be used:

```
.background{ background-color: rgb(232, 73,  
114) }
```

This example shows the color as background, it is applied via the CSS property "background".

To optimize and compress your CSS code, you can use our [online CSS compressor and optimizer](#) based on csstidy. If you want to create a linear or radial gradient as background or border, check our [CSS Gradient Generator](#).

Hey! You found this booklet interesting? Support Converting Colors with the new Membership Option!

The pro membership hides all ads, plus gives you double the colors in the color bucket, and more awesome pro features!

[Learn more, Memberships starting at \\$2.50/m!](#)

**Follow me
on Twitter!**

@ConvertingColor