

Converting Colors

`RYB(233, 194, 183)`

Have a look what the booklet for
RYB(233, 194, 183) contains.

| | |
|--|----|
| RYB(233, 194, 183) | 3 |
| <i>Conversions</i> | 4 |
| <i>Details</i> | 6 |
| <i>Harmonies</i> | 11 |
| <i>Previews</i> | 23 |
| <i>Color Blindness Simulation</i> | 26 |
| <i>CSS Examples</i> | 29 |

Color

R_YB(233, 194, 183)

Conversions

Conversions Part 1

| Format | Color |
|---------------|---------------------------|
| Hex | E9C0B7 |
| RGB | 233, 192, 183 |
| RGB Percent | 91%, 75%, 72% |
| CMY | 0.0863, 0.2470, 0.2824 |
| CMYK | 0.00, 0.18, 0.21, 0.09 |
| HSL | 11°, 53%, 82% |
| HSV | 11°, 21%, 91% |
| XYZ | 61.0048, 58.4490, 52.8662 |
| YIQ | 203.2330, 27.3250, 5.8930 |

Conversions

Conversions Part 2

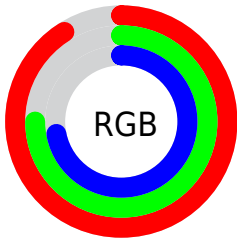
| Format | Color |
|-------------------------------------|-------------------------------|
| R _Y B | 233, 194, 183 |
| Decimal | 15319223 |
| CIE Lab | 80.99, 13.25, 10.03 |
| CIE LCh | 81, 16.614, 37.119 |
| Yxy | 58.4490, 0.3540, 0.3392 |
| Android (android.graphics.Color) | 4293509303 (0xFFE9C0B7) |
| YUV | 203.2330, -9.9749, 26.1057 |
| Hunter-Lab | 76.4520, 8.6430, 12.5176 |

Details

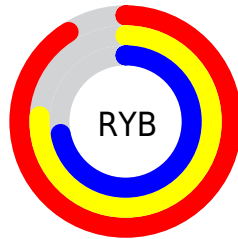
The RYB color **233, 194, 183** is a light color, and the websafe version is hex **FFCCCC**. A complement of this color would be **183, 206, 233**, and the grayscale version is **203, 203, 203**.

A 20% lighter version of the original color is **251, 255, 239**, and **177, 140, 130** is the 20% darker color. If you saturate the color by 10%, you get **233, 176, 160**, and if you desaturate by 10%, it is **233, 212, 206**.

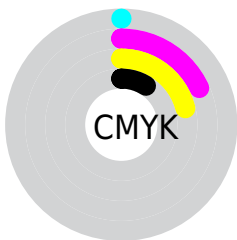
Distribution



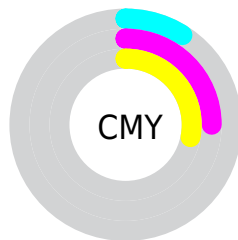
- Red (91%)
- Green (75%)
- Blue (72%)



- Red (91%)
- Yellow (76%)
- Blue (72%)



- Cyan (0%)
- Magenta (18%)
- Yellow (21%)
- Black (9%)



- Cyan (9%)
- Magenta (25%)
- Yellow (28%)

Brightness & Saturation Gradients

These gradients show how the RYB color 233, 194, 183 changes by changing the brightness by 10 percent. The first figure shows a shift by +10% for each color and the second figure -10%.

Similar to the brightness gradients but the following saturation gradients show a change of the RYB color 233, 194, 183 by changing the saturation by 10% instead.

 233, 194, 183


255, 255, 255

 251, 255, 239

 233, 194, 183

 205, 167, 156

 177, 140, 130

 150, 115, 105

 123, 89, 81

 98, 66, 58

 73, 45, 36

 49, 24, 15

 29, 0, 0

 0, 0, 0

 233, 194, 183

 233, 194, 183

 233, 176, 160


 233, 212, 206

 233, 158, 136


 233, 230, 230

 233, 140, 113

 233, 242, 253

 233, 122, 90

 233, 244, 255

 233, 104, 66

 233, 84, 43

 233, 66, 20

 233, 51, 0

Harmonies

Analogous

The Analogous color harmony consists of three colors that are next to each other on the color wheel.



233, 190, 198



233, 194, 183



224, 215, 173

Triad

The Triadic color harmony groups three colors that are evenly spaced from another and form a triangle on the color wheel.



233, 194, 183



175, 199, 209



189, 198, 232

Complementary

The Complementary color scheme is a pair of colors which are on the opposite of each other on the color wheel.



233, 194, 183



183, 206, 233

Split Complementary

Split-complementary colors differ from the complementary color scheme. The scheme consists of three colors, the original color and two neighbors of the complement color.



171, 193, 229



233, 194, 183



163, 188, 210

Square

The Square scheme is like the rectangle color scheme, but the four colors are evenly spaced on the color wheel.



233, 194, 183



176, 206, 190



161, 187, 219



209, 196, 226

Rectangle

The Rectangle color scheme consists of four colors that form a rectangle on the color wheel.



233, 194, 183



195, 215, 170



161, 187, 219



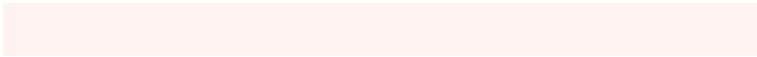
182, 197, 232

Sweetspot

The Sweet Spot groups the original color and five complimentary colors.



233, 194, 183



255, 242, 240



233, 183, 225



128, 120, 119



0, 0, 0



128, 128, 128

Same Dimension

The Same Dimension uses a secret algorithm to generate beautiful new colors.



233, 194, 183



255, 204, 189



209, 233, 183



117, 108, 106



181, 40, 0



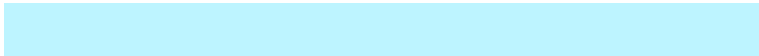
54, 12, 0

Inverse Universe

The Inverse Universe completely reimagines the original color for something new.



183, 206, 233



189, 219, 255



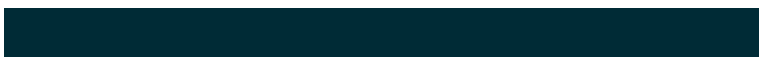
183, 196, 233



106, 111, 117



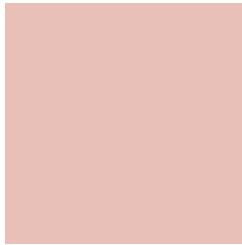
0, 81, 181



0, 24, 54

Previews

White Background



This preview shows how the RYB color 233, 194, 183 looks on a white background.

Color Contrast Check

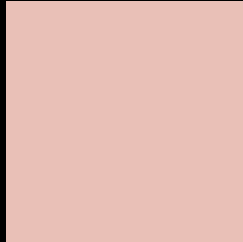
Large Text (above 18pt) WCAG AA × Fail

Any Text WCAG AA × Fail

Large Text (above 18pt) WCAG AAA × Fail

Any Text WCAG AAA × Fail

Black Background



This preview shows how the RYB color 233, 194, 183 looks on a black background.

Color Contrast Check

Large Text (above 18pt) WCAG AA ✓ Pass

Any Text WCAG AA ✓ Pass

Large Text (above 18pt) WCAG AAA ✓ Pass

Any Text WCAG AAA ✓ Pass

If you want to check with other color combinations, try the [Color Contrast Checker](#).

RYB 233, 194, 183 Background



This preview shows how black text looks on a background with the RYB color 233, 194, 183.



This preview shows how white text looks on a background with the RYB color 233, 194, 183.

Color Blindness Simulation

Color vision deficiency is a very complex topic, and I could not describe the different causes any better than Wikipedia does, so if you want to learn more, you should check out their [article about color blindness](#).


Dichromacy



Original Color
233, 194, 183

Protanopia
199, 208, 188

Deuteranopia
228, 198, 183



Tritanopia
235, 189, 204

Trichromacy



Original Color
233, 194, 183

Protanomaly
217, 206, 186

Deuteranomaly
230, 196, 183

Tritanomaly
234, 190, 196

Monochromacy



Original Color
233, 194, 183

Achromatopsia
203, 203, 203

Achromatomaly
214, 200, 196

CSS Examples

Text

The CSS property to change the color of the text to RYB 233, 194, 183 is called "color". The color property can be set on classes, ids or directly on the HTML element.

This example shows how text in the color rgb(233, 192, 183) looks like.

```
.text, #text, p{  
    color:rgb(233, 192, 183)  
}
```

If you want to add a text shadow in that color use the text-shadow property, you can generate a text shadow directly with our [CSS Text Shadow Generator](#).

Here you see how black text with a 4 pixel rgb(233, 192, 183) colored shadow looks like.

```
.shadow{ text-shadow: 4px 4px 2px rgb(233, 192, 183) }
```

Border

The CSS property to change the border of an element to RYB 233, 194, 183 is called "border". The border property can be set on classes, ids or directly on the HTML element.

This example shows the color as border, it can be applied via the CSS property "border" or "border-color".

```
.border, #border, table{ border:4px solid rgb(233, 192, 183) }
```

If only the border color should be changed use the property `border-color`.

```
.border{ border-color:rgb(233, 192, 183) }
```

If you want to add a box shadow in that color use:

Here you see how a box with a 4 pixel `rgb(233, 192, 183)` colored shadow looks like.

```
.boxshadow{ -moz-box-shadow:4px 4px 4px  
4px rgb(233, 192, 183); -webkit-box-  
shadow:4px 4px 4px 4px rgb(233, 192, 183);  
box-shadow:4px 4px 4px 4px rgb(233, 192,  
183) }
```

Background

The CSS property to change the background color of an element to RYB 233, 194, 183 is called "background". The background property can be set on classes, ids or directly on the HTML element.

```
.background, #background, body{  
background: rgb(233, 192, 183) }
```

If only the background color should be changed can be used:

```
.background{ background-color: rgb(233,  
192, 183) }
```

This example shows the color as background, it is applied via the CSS property "background".

To optimize and compress your CSS code, you can use our [online CSS compressor and optimizer](#) based on csstidy. If you want to create a linear or radial gradient as background or border, check our [CSS Gradient Generator](#).

Hey! You found this booklet interesting? Support Converting Colors with the new Membership Option!

The pro membership hides all ads, plus gives you double the colors in the color bucket, and more awesome pro features!

[Learn more, Memberships starting at \\$2.50/m!](#)

**Follow me
on Twitter!**

@ConvertingColor