

Converting Colors

`RYB(233, 212, 210)`

Have a look what the booklet for
RYB(233, 212, 210) contains.

RYB(233, 212, 210)	3
<i>Conversions</i>	4
<i>Details</i>	6
<i>Harmonies</i>	11
<i>Previews</i>	23
<i>Color Blindness Simulation</i>	26
<i>CSS Examples</i>	29

Color

R_YB(233, 212, 210)

Conversions

Conversions Part 1

Format	Color
Hex	E9D4D2
RGB	233, 212, 210
RGB Percent	91%, 83%, 82%
CMY	0.0863, 0.1693, 0.1765
CMYK	0.00, 0.09, 0.10, 0.09
HSL	5°, 34%, 87%
HSV	5°, 10%, 91%
XYZ	68.7406, 68.9838, 70.6649
YIQ	218.0510, 13.1580, 3.8300

Conversions

Conversions Part 2

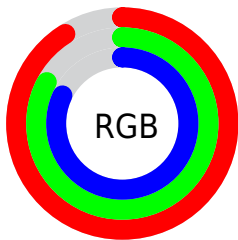
Format	Color
R _Y B	233, 212, 210
Decimal	15324370
CIE Lab	86.50, 7.02, 3.56
CIE LCh	86, 7.867, 26.894
Yxy	68.9838, 0.3299, 0.3310
Android (android.graphics.Color)	4293514450 (0xFFE9D4D2)
YUV	218.0510, -3.9691, 13.1103
Hunter-Lab	83.0565, 2.3844, 7.6953

Details

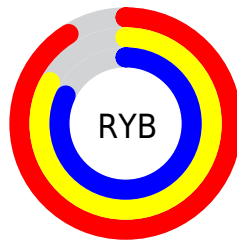
The RYB color **233, 212, 210** is a light color, and the websafe version is hex **CCCCCC**. A complement of this color would be **210, 221, 233**, and the grayscale version is **218, 218, 218**.

A 20% lighter version of the original color is 255, 255, 255, and **177, 157, 156** is the 20% darker color. If you saturate the color by 10%, you get **233, 190, 187**, and if you desaturate by 10%, it is **233, 233, 233**.

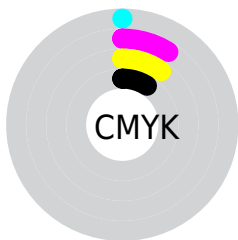
Distribution



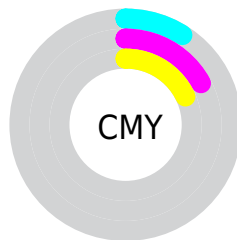
- Red (91%)
- Green (83%)
- Blue (82%)



- Red (91%)
- Yellow (83%)
- Blue (82%)



- Cyan (0%)
- Magenta (9%)
- Yellow (10%)
- Black (9%)



- Cyan (9%)
- Magenta (17%)
- Yellow (18%)

Brightness & Saturation Gradients

These gradients show how the RYB color 233, 212, 210 changes by changing the brightness by 10 percent. The first figure shows a shift by +10% for each color and the second figure -10%.

Similar to the brightness gradients but the following saturation gradients show a change of the RYB color 233, 212, 210 by changing the saturation by 10% instead.


 233, 212, 210


255, 255, 255

 233, 212, 210

 205, 184, 182

 177, 157, 156


 150, 131, 130

 124, 106, 104

 99, 82, 80

 75, 59, 58


 52, 37, 36

 31, 17, 15

 0, 0, 0

 233, 212, 210

 233, 212, 210

 233, 190, 187


 233, 233, 233

 233, 170, 163

 233, 244, 255

 233, 149, 140

 233, 127, 117

 233, 106, 94

 233, 84, 70

 233, 63, 47

 233, 41, 24

 233, 21, 0

Harmonies

Analogous

The Analogous color harmony consists of three colors that are next to each other on the color wheel.



231, 212, 217



233, 212, 210



230, 218, 204

Triad

The Triadic color harmony groups three colors that are evenly spaced from another and form a triangle on the color wheel.



233, 212, 210



207, 219, 220



208, 214, 231

Complementary

The Complementary color scheme is a pair of colors which are on the opposite of each other on the color wheel.



233, 212, 210



210, 221, 233

Split Complementary

Split-complementary colors differ from the complementary color scheme. The scheme consists of three colors, the original color and two neighbors of the complement color.



201, 212, 229



233, 212, 210



201, 213, 221

Square

The Square scheme is like the rectangle color scheme, but the four colors are evenly spaced on the color wheel.



233, 212, 210



203, 218, 206



198, 210, 223



217, 215, 230

Rectangle

The Rectangle color scheme consists of four colors that form a rectangle on the color wheel.



233, 212, 210



222, 226, 202



198, 210, 223



205, 214, 231

Sweetspot

The Sweet Spot groups the original color and five complimentary colors.



233, 212, 210



255, 248, 247



233, 210, 231



128, 123, 122



0, 0, 0



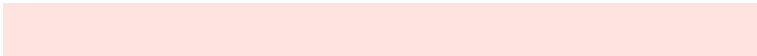
128, 128, 128

Same Dimension

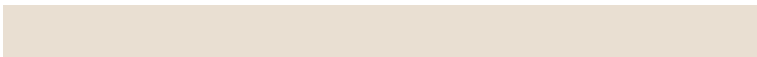
The Same Dimension uses a secret algorithm to generate beautiful new colors.



233, 212, 210



255, 227, 224



228, 233, 210



117, 107, 106



181, 15, 0



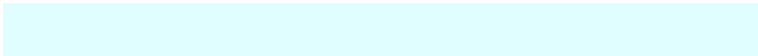
54, 4, 0

Inverse Universe

The Inverse Universe completely reimagines the original color for something new.



210, 221, 233



224, 239, 255



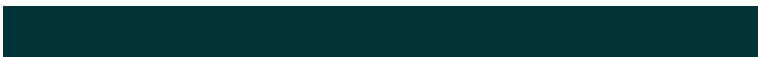
210, 217, 233



106, 111, 117



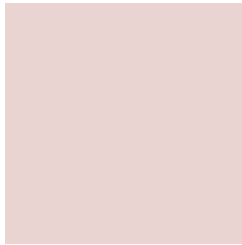
0, 87, 181



0, 26, 54

Previews

White Background



This preview shows how the RYB color 233, 212, 210 looks on a white background.

Color Contrast Check

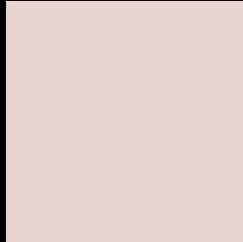
Large Text (above 18pt) WCAG AA × Fail

Any Text WCAG AA × Fail

Large Text (above 18pt) WCAG AAA × Fail

Any Text WCAG AAA × Fail

Black Background



This preview shows how the RYB color 233, 212, 210 looks on a black background.

Color Contrast Check

Large Text (above 18pt) WCAG AA ✓ Pass

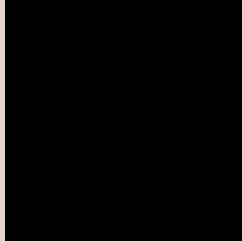
Any Text WCAG AA ✓ Pass

Large Text (above 18pt) WCAG AAA ✓ Pass

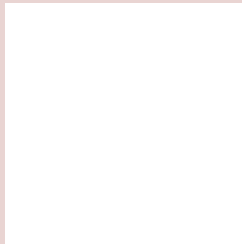
Any Text WCAG AAA ✓ Pass

If you want to check with other color combinations, try the [Color Contrast Checker](#).

RYB 233, 212, 210 Background



This preview shows how black text looks on a background with the RYB color 233, 212, 210.



This preview shows how white text looks on a background with the RYB color 233, 212, 210.

Color Blindness Simulation

Color vision deficiency is a very complex topic, and I could not describe the different causes any better than Wikipedia does, so if you want to learn more, you should check out their [article about color blindness](#).

Dichromacy



Original Color
233, 212, 210

Protanopia
221, 219, 212

Deuteranopia
240, 209, 210



Tritanopia
235, 209, 226

Trichromacy



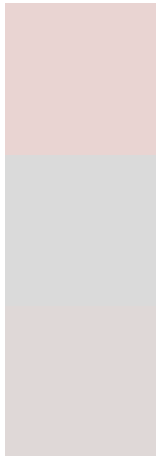
Original Color
233, 212, 210

Protanomaly
225, 215, 211

Deuteranomaly
237, 210, 210

Tritanomaly
234, 210, 220

Monochromacy



Original Color
233, 212, 210

Achromatopsia
218, 218, 218

Achromatomaly
223, 216, 215

CSS Examples

Text

The CSS property to change the color of the text to RYB 233, 212, 210 is called "color". The color property can be set on classes, ids or directly on the HTML element.

This example shows how text in the color `rgb(233, 212, 210)` looks like.

```
.text, #text, p{  
    color:rgb(233, 212, 210)  
}
```

If you want to add a text shadow in that color use the text-shadow property, you can generate a text shadow directly with our [CSS Text Shadow Generator](#).

Here you see how black text with a 4 pixel rgb(233, 212, 210) colored shadow looks like.

```
.shadow{ text-shadow: 4px 4px 2px rgb(233, 212, 210) }
```

Border

The CSS property to change the border of an element to RYB 233, 212, 210 is called "border". The border property can be set on classes, ids or directly on the HTML element.

This example shows the color as border, it can be applied via the CSS property "border" or "border-color".

```
.border, #border, table{ border:4px solid rgb(233, 212, 210) }
```

If only the border color should be changed use the property `border-color`.

```
.border{ border-color:rgb(233, 212, 210) }
```

If you want to add a box shadow in that color use:

Here you see how a box with a 4 pixel `rgb(233, 212, 210)` colored shadow looks like.

```
.boxshadow{ -moz-box-shadow:4px 4px 4px  
4px rgb(233, 212, 210); -webkit-box-  
shadow:4px 4px 4px 4px rgb(233, 212, 210);  
box-shadow:4px 4px 4px 4px rgb(233, 212,  
210) }
```

Background

The CSS property to change the background color of an element to RGB 233, 212, 210 is called "background". The background property can be set on classes, ids or directly on the HTML element.

```
.background, #background, body{  
background: rgb(233, 212, 210) }
```

If only the background color should be changed can be used:

```
.background{ background-color: rgb(233,  
212, 210) }
```

This example shows the color as background, it is applied via the CSS property "background".

To optimize and compress your CSS code, you can use our [online CSS compressor and optimizer](#) based on csstidy. If you want to create a linear or radial gradient as background or border, check our [CSS Gradient Generator](#).

Hey! You found this booklet interesting? Support Converting Colors with the new Membership Option!

The pro membership hides all ads, plus gives you double the colors in the color bucket, and more awesome pro features!

[Learn more, Memberships starting at \\$2.50/m!](#)

**Follow me
on Twitter!**

@ConvertingColor