

Converting Colors

`RYB(233, 98, 152)`

Have a look what the booklet for
RYB(233, 98, 152) contains.

RYB(233, 98, 152)	3
<i>Conversions</i>	4
<i>Details</i>	6
<i>Harmonies</i>	11
<i>Previews</i>	23
<i>Color Blindness Simulation</i>	26
<i>CSS Examples</i>	29

Color

R_YB(233, 98, 152)

Conversions

Conversions Part 1

Format	Color
Hex	E96298
RGB	233, 98, 152
RGB Percent	91%, 38%, 60%
CMY	0.0863, 0.6157, 0.4039
CMYK	0.00, 0.58, 0.35, 0.09
HSL	336°, 75%, 65%
HSV	336°, 58%, 91%
XYZ	43.6395, 28.3260, 32.8732
YIQ	144.5210, 63.1260, 45.4140

Conversions

Conversions Part 2

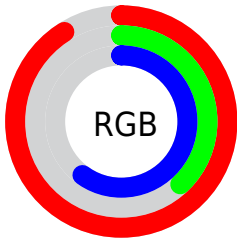
Format	Color
R _Y B	233, 98, 152
Decimal	15295128
CIE Lab	60.18, 57.36, -2.82
CIE LCh	60, 57.428, 357.183
Yxy	28.3260, 0.4163, 0.2702
Android (android.graphics.Color)	4293485208 (0xFFE96298)
YUV	144.5210, 3.6871, 77.5961
Hunter-Lab	53.2222, 53.2220, 0.6345

Details

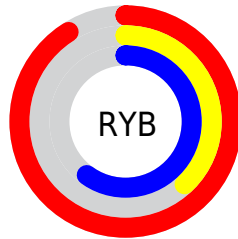
The RYB color **233, 98, 152** is a light color, and the websafe version is hex **FF6699**. A complement of this color would be **98, 182, 233**, and the grayscale version is **144, 144, 144**.

A 20% lighter version of the original color is **255, 154, 206**, and **173, 39, 101** is the 20% darker color. If you saturate the color by 10%, you get **233, 75, 138**, and if you desaturate by 10%, it is **233, 121, 166**.

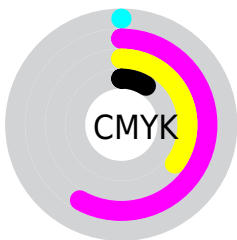
Distribution



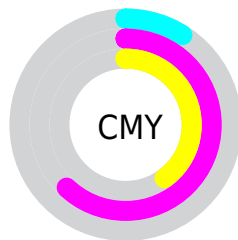
- Red (91%)
- Green (38%)
- Blue (60%)



- Red (91%)
- Yellow (38%)
- Blue (60%)



- Cyan (0%)
- Magenta (58%)
- Yellow (35%)
- Black (9%)




- Cyan (9%)
- Magenta (62%)
- Yellow (40%)

Brightness & Saturation Gradients

These gradients show how the RYB color 233, 98, 152 changes by changing the brightness by 10 percent. The first figure shows a shift by +10% for each color and the second figure -10%.

Similar to the brightness gradients but the following saturation gradients show a change of the RYB color 233, 98, 152 by changing the saturation by 10% instead.

 233, 98, 152

 233, 98, 152

255, 255, 255

 203, 70, 126

 255, 154, 206

 173, 39, 101

 255, 182, 234

 144, 0, 77

 255, 211, 255

 116, 0, 55

 255, 240, 255

 87, 0, 34

 63, 0, 10

 28, 0, 1

 0, 0, 0

 233, 98, 152

 233, 98, 152

■ 233, 75, 138

■ 233, 121, 166

■ 233, 51, 124

■ 233, 145, 180

■ 233, 28, 110

■ 233, 168, 194

■ 233, 5, 96

■ 233, 191, 208

■ 233, 0, 93

■ 233, 215, 222

■ 233, 236, 238

■ 233, 245, 255

■ 233, 244, 255

Harmonies

Analogous

The Analogous color harmony consists of three colors that are next to each other on the color wheel.



202, 112, 201



233, 98, 152



235, 103, 102

Triad

The Triadic color harmony groups three colors that are evenly spaced from another and form a triangle on the color wheel.



233, 98, 152



47, 156, 77



0, 96, 229

Complementary

The Complementary color scheme is a pair of colors which are on the opposite of each other on the color wheel.



233, 98, 152



98, 182, 233

Split Complementary

Split-complementary colors differ from the complementary color scheme. The scheme consists of three colors, the original color and two neighbors of the complement color.



0, 89, 190



233, 98, 152



55, 140, 165

Square

The Square scheme is like the rectangle color scheme, but the four colors are evenly spaced on the color wheel.



233, 98, 152



80, 176, 34



0, 93, 169



0, 94, 246

Rectangle

The Rectangle color scheme consists of four colors that form a rectangle on the color wheel.



233, 98, 152



223, 132, 72



0, 93, 169



0, 94, 218

Sweetspot

The Sweet Spot groups the original color and five complimentary colors.



233, 98, 152



255, 212, 229



179, 98, 233



128, 102, 112



0, 0, 0



128, 128, 128

Same Dimension

The Same Dimension uses a secret algorithm to generate beautiful new colors.



233, 98, 152



255, 77, 148



233, 114, 98



117, 106, 110



181, 0, 72



54, 0, 21

Inverse Universe

The Inverse Universe completely reimagines the original color for something new.



233, 98, 152



255, 77, 148



98, 162, 233



117, 106, 110



181, 0, 72



54, 0, 21

Previews

White Background



This preview shows how the RYB color 233, 98, 152 looks on a white background.

Color Contrast Check

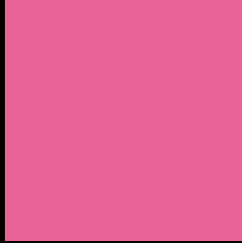
Large Text (above 18pt) WCAG AA ✓ Pass

Any Text WCAG AA × Fail

Large Text (above 18pt) WCAG AAA × Fail

Any Text WCAG AAA × Fail

Black Background



This preview shows how the RYB color 233, 98, 152 looks on a black background.

Color Contrast Check

Large Text (above 18pt) WCAG AA ✓ Pass

Any Text WCAG AA ✓ Pass

Large Text (above 18pt) WCAG AAA ✓ Pass

Any Text WCAG AAA × Fail

If you want to check with other color combinations, try the [Color Contrast Checker](#).

RYB 233, 98, 152 Background



This preview shows how black text looks on a background with the RYB color 233, 98, 152.

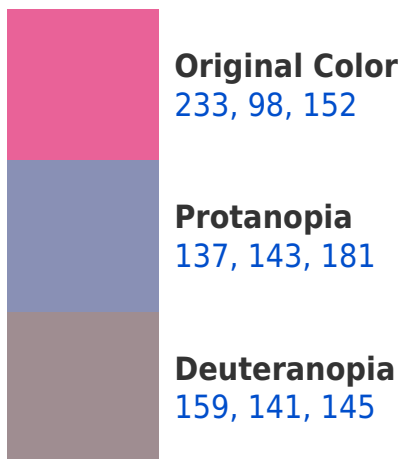



This preview shows how white text looks on a background with the RYB color 233, 98, 152.

Color Blindness Simulation

Color vision deficiency is a very complex topic, and I could not describe the different causes any better than Wikipedia does, so if you want to learn more, you should check out their [article about color blindness](#).

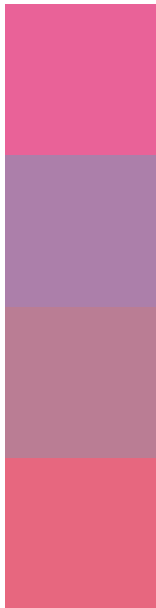
Dichromacy





Tritanopia
230, 106, 113

Trichromacy



Original Color
233, 98, 152

Protanomaly
172, 127, 170

Deuteranomaly
186, 125, 148

Tritanomaly
231, 103, 127

Monochromacy



Original Color
233, 98, 152

Achromatopsia
145, 145, 145

Achromatomaly
177, 128, 148

CSS Examples

Text

The CSS property to change the color of the text to RYB 233, 98, 152 is called "color". The color property can be set on classes, ids or directly on the HTML element.

This example shows how text in the color `rgb(233, 98, 152)` looks like.

```
.text, #text, p{  
    color:rgb(233, 98, 152)  
}
```

If you want to add a text shadow in that color use the text-shadow property, you can generate a text shadow directly with our [CSS Text Shadow Generator](#).

Here you see how black text with a 4 pixel rgb(233, 98, 152) colored shadow looks like.

```
.shadow{ text-shadow: 4px 4px 2px rgb(233, 98, 152) }
```

Border

The CSS property to change the border of an element to RYB 233, 98, 152 is called "border". The border property can be set on classes, ids or directly on the HTML element.

This example shows the color as border, it can be applied via the CSS property "border" or "border-color".

```
.border, #border, table{ border:4px solid rgb(233, 98, 152) }
```

If only the border color should be changed use the property `border-color`.

```
.border{ border-color:rgb(233, 98, 152) }
```

If you want to add a box shadow in that color use:

Here you see how a box with a 4 pixel `rgb(233, 98, 152)` colored shadow looks like.

```
.boxshadow{ -moz-box-shadow:4px 4px 4px 4px rgb(233, 98, 152); -webkit-box-shadow:4px 4px 4px 4px rgb(233, 98, 152); box-shadow:4px 4px 4px 4px rgb(233, 98, 152) }
```

Background

The CSS property to change the background color of an element to RGB 233, 98, 152 is called "background". The background property can be set on classes, ids or directly on the HTML element.

```
.background, #background, body{  
background: rgb(233, 98, 152) }
```

If only the background color should be changed can be used:

```
.background{ background-color: rgb(233, 98,  
152) }
```

This example shows the color as background, it is applied via the CSS property "background".

To optimize and compress your CSS code, you can use our [online CSS compressor and optimizer](#) based on csstidy. If you want to create a linear or radial gradient as background or border, check our [CSS Gradient Generator](#).

Hey! You found this booklet interesting? Support Converting Colors with the new Membership Option!

The pro membership hides all ads, plus gives you double the colors in the color bucket, and more awesome pro features!

[Learn more, Memberships starting at \\$2.50/m!](#)

**Follow me
on Twitter!**

@ConvertingColor