

Converting Colors

`RYB(234, 169, 182)`

Have a look what the booklet for RYB(234, 169, 182) contains.

RYB(234, 169, 182)	3
<i>Conversions</i>	4
<i>Details</i>	6
<i>Harmonies</i>	11
<i>Previews</i>	23
<i>Color Blindness Simulation</i>	26
<i>CSS Examples</i>	29

Color

R_YB(234, 169, 182)

Conversions

Conversions Part 1

Format	Color
Hex	EAA9B6
RGB	234, 169, 182
RGB Percent	92%, 66%, 71%
CMY	0.0824, 0.3373, 0.2863
CMYK	0.00, 0.28, 0.22, 0.08
HSL	348°, 61%, 79%
HSV	348°, 28%, 92%
XYZ	56.5631, 49.2458, 50.7801
YIQ	189.9170, 34.5670, 17.8230

Conversions

Conversions Part 2

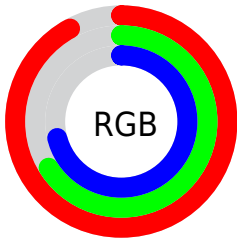
Format	Color
RYB	234, 169, 182
Decimal	15378870
CIELab	75.60, 25.72, 2.84
CIELCh	76, 25.878, 6.299
Yxy	49.2458, 0.3612, 0.3145
Android (android.graphics.Color)	4293568950 (0xFFEAA9B6)
YUV	189.9170, -3.9031, 38.6608
Hunter-Lab	70.1753, 21.0689, 6.2194

Details

The RYB color **234, 169, 182** is a light color, and the websafe version is hex **CC9999**. A complement of this color would be **169, 205, 234**, and the grayscale version is **190, 190, 190**.

A 20% lighter version of the original color is **255, 225, 238**, and **177, 116, 129** is the 20% darker color. If you saturate the color by 10%, you get **234, 146, 163**, and if you desaturate by 10%, it is **234, 192, 201**.

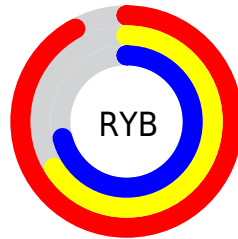
Distribution



Red (92%)

Green (66%)

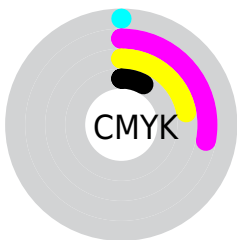
Blue (71%)



Red (92%)

Yellow (66%)

Blue (71%)

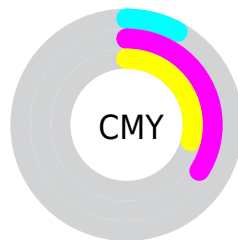


Cyan (0%)

Magenta (28%)

Yellow (22%)

Black (8%)



Cyan (8%)


Magenta (34%)

Yellow (29%)

Brightness & Saturation Gradients

These gradients show how the RYB color 234, 169, 182 changes by changing the brightness by 10 percent. The first figure shows a shift by +10% for each color and the second figure -10%.

Similar to the brightness gradients but the following saturation gradients show a change of the RYB color 234, 169, 182 by changing the saturation by 10% instead.

 234, 169, 182

 234, 169, 182

255, 255, 255

 205, 142, 155

 255, 225, 238

 177, 116, 129

 255, 253, 255

 150, 91, 104

 123, 67, 80

 97, 44, 57

 72, 21, 36

 48, 0, 14

 16, 0, 0

 0, 0, 0

■ 234, 169, 182

■ 234, 169, 182

■ 234, 146, 163

■ 234, 192, 201

■ 234, 122, 145

■ 234, 216, 219

■ 234, 99, 126

■ 234, 237, 239

■ 234, 75, 107

■ 234, 245, 255

■ 234, 52, 88

■ 234, 29, 70

■ 234, 5, 51

■ 234, 0, 47

Harmonies

Analogous

The Analogous color harmony consists of three colors that are next to each other on the color wheel.



221, 172, 206



234, 169, 182



233, 175, 159

Triad

The Triadic color harmony groups three colors that are evenly spaced from another and form a triangle on the color wheel.



234, 169, 182



147, 193, 168



133, 170, 229

Complementary

The Complementary color scheme is a pair of colors which are on the opposite of each other on the color wheel.



234, 169, 182



169, 205, 234

Split Complementary

Split-complementary colors differ from the complementary color scheme. The scheme consists of three colors, the original color and two neighbors of the complement color.



117, 161, 214



234, 169, 182



145, 183, 198

Square

The Square scheme is like the rectangle color scheme, but the four colors are evenly spaced on the color wheel.



234, 169, 182



156, 199, 139



124, 164, 200



164, 181, 233

Rectangle

The Rectangle color scheme consists of four colors that form a rectangle on the color wheel.



234, 169, 182



226, 193, 147



124, 164, 200



126, 167, 225

Sweetspot

The Sweet Spot groups the original color and five complimentary colors.



234, 169, 182



255, 235, 239



221, 169, 234



128, 115, 117



0, 0, 0



128, 128, 128

Same Dimension

The Same Dimension uses a secret algorithm to generate beautiful new colors.



234, 169, 182



255, 171, 188



234, 198, 169



117, 106, 108



181, 0, 36



54, 0, 11

Inverse Universe

The Inverse Universe completely reimagines the original color for something new.



234, 169, 182



255, 171, 188



169, 196, 234



117, 106, 108



181, 0, 36



54, 0, 11

Previews

White Background



This preview shows how the RYB color 234, 169, 182 looks on a white background.

Color Contrast Check

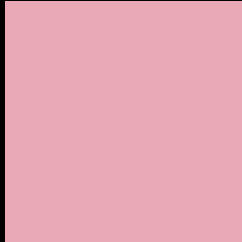
Large Text (above 18pt) WCAG AA × Fail

Any Text WCAG AA × Fail

Large Text (above 18pt) WCAG AAA × Fail

Any Text WCAG AAA × Fail

Black Background



This preview shows how the RYB color 234, 169, 182 looks on a black background.

Color Contrast Check

Large Text (above 18pt) WCAG AA ✓ Pass

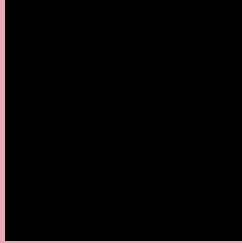
Any Text WCAG AA ✓ Pass

Large Text (above 18pt) WCAG AAA ✓ Pass

Any Text WCAG AAA ✓ Pass

If you want to check with other color combinations, try the [Color Contrast Checker](#).

RYB 234, 169, 182 Background



This preview shows how black text looks on a background with the RYB color 234, 169, 182.

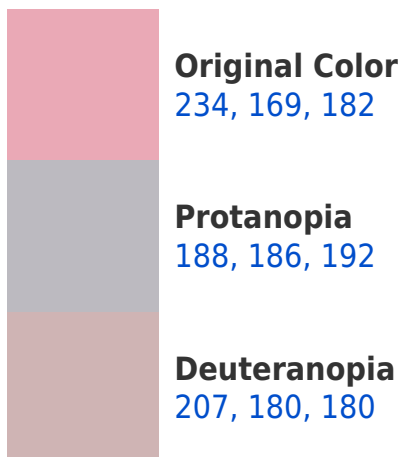



This preview shows how white text looks on a background with the RYB color 234, 169, 182.

Color Blindness Simulation

Color vision deficiency is a very complex topic, and I could not describe the different causes any better than Wikipedia does, so if you want to learn more, you should check out their [article about color blindness](#).

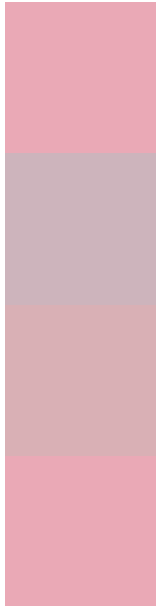
Dichromacy





Tritanopia
234, 169, 182

Trichromacy



Original Color

234, 169, 182

Protanomaly

205, 180, 188

Deuteranomaly

217, 176, 181

Tritanomaly

234, 169, 182

Monochromacy



Original Color

234, 169, 182

Achromatopsia

190, 190, 190

Achromatomaly

206, 182, 187

CSS Examples

Text

The CSS property to change the color of the text to RYB 234, 169, 182 is called "color". The color property can be set on classes, ids or directly on the HTML element.

This example shows how text in the color rgb(234, 169, 182) looks like.

```
.text, #text, p{  
    color:rgb(234, 169, 182)  
}
```

If you want to add a text shadow in that color use the text-shadow property, you can generate a text shadow directly with our [CSS Text Shadow Generator](#).

Here you see how black text with a 4 pixel rgb(234, 169, 182) colored shadow looks like.

```
.shadow{ text-shadow: 4px 4px 2px rgb(234, 169, 182) }
```

Border

The CSS property to change the border of an element to RYB 234, 169, 182 is called "border". The border property can be set on classes, ids or directly on the HTML element.

This example shows the color as border, it can be applied via the CSS property "border" or "border-color".

```
.border, #border, table{ border:4px solid rgb(234, 169, 182) }
```

If only the border color should be changed use the property `border-color`.

```
.border{ border-color:rgb(234, 169, 182) }
```

If you want to add a box shadow in that color use:

Here you see how a box with a 4 pixel `rgb(234, 169, 182)` colored shadow looks like.

```
.boxshadow{ -moz-box-shadow:4px 4px 4px  
4px rgb(234, 169, 182); -webkit-box-  
shadow:4px 4px 4px 4px rgb(234, 169, 182);  
box-shadow:4px 4px 4px 4px rgb(234, 169,  
182) }
```

Background

The CSS property to change the background color of an element to RYB 234, 169, 182 is called "background". The background property can be set on classes, ids or directly on the HTML element.

```
.background, #background, body{  
background: rgb(234, 169, 182) }
```

If only the background color should be changed can be used:

```
.background{ background-color: rgb(234,  
169, 182) }
```

This example shows the color as background, it is applied via the CSS property "background".

To optimize and compress your CSS code, you can use our [online CSS compressor and optimizer](#) based on csstidy. If you want to create a linear or radial gradient as background or border, check our [CSS Gradient Generator](#).

Hey! You found this booklet interesting? Support Converting Colors with the new Membership Option!

The pro membership hides all ads, plus gives you double the colors in the color bucket, and more awesome pro features!

[Learn more, Memberships starting at \\$2.50/m!](#)

**Follow me
on Twitter!**

@ConvertingColor