

Converting Colors

`RYB(234, 207, 204)`

Have a look what the booklet for
RYB(234, 207, 204) contains.

RYB(234, 207, 204)	3
<i>Conversions</i>	4
<i>Details</i>	6
<i>Harmonies</i>	11
<i>Previews</i>	23
<i>Color Blindness Simulation</i>	26
<i>CSS Examples</i>	29

Color

$\text{RYB}(234, 207, 204)$

Conversions

Conversions Part 1

Format	Color
Hex	EACFCC
RGB	234, 207, 204
RGB Percent	92%, 81%, 80%
CMY	0.0824, 0.1893, 0.2000
CMYK	0.00, 0.12, 0.13, 0.08
HSL	5°, 42%, 86%
HSV	5°, 13%, 92%
XYZ	67.0776, 66.3457, 66.3974
YIQ	214.7310, 17.0550, 4.7910

Conversions

Conversions Part 2

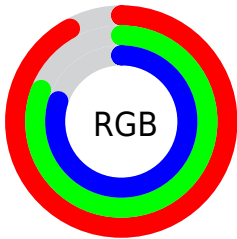
Format	Color
RYB	234, 207, 204
Decimal	15388620
CIELab	85.17, 9.07, 4.83
CIELCh	85, 10.280, 28.054
Yxy	66.3457, 0.3357, 0.3320
Android (android.graphics.Color)	4293578700 (0xFFEACFCC)
YUV	214.7310, -5.2904, 16.8989
Hunter-Lab	81.4528, 4.4548, 8.6860

Details

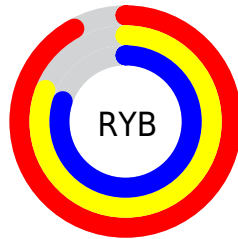
The RYB color **234, 207, 204** is a light color, and the websafe version is hex **FFCCCC**. A complement of this color would be **204, 218, 234**, and the grayscale version is **215, 215, 215**.

A 20% lighter version of the original color is **255, 255, 255**, and **178, 153, 150** is the 20% darker color. If you saturate the color by 10%, you get **234, 185, 181**, and if you desaturate by 10%, it is **234, 228, 227**.

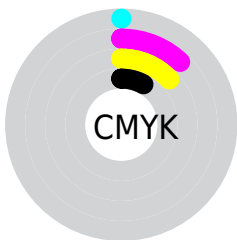
Distribution



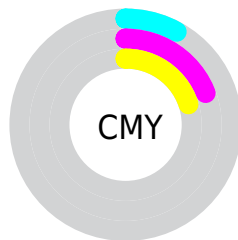
- Red (92%)
- Green (81%)
- Blue (80%)



- Red (92%)
- Yellow (81%)
- Blue (80%)



- Cyan (0%)
- Magenta (12%)
- Yellow (13%)
- Black (8%)



- Cyan (8%)
- Magenta (19%)
- Yellow (20%)

Brightness & Saturation Gradients


These gradients show how the RYB color 234, 207, 204 changes by changing the brightness by 10 percent. The first figure shows a shift by +10% for each color and the second figure -10%.

Similar to the brightness gradients but the following saturation gradients show a change of the RYB color 234, 207, 204 by changing the saturation by 10% instead.


 234, 207, 204

255, 255, 255

 234, 207, 204

 206, 179, 177

 178, 152, 150

 151, 126, 124

 125, 101, 99

 100, 77, 75

 76, 55, 53


 52, 33, 32

 32, 12, 7

 0, 0, 0

 234, 207, 204

 234, 207, 204

 234, 185, 181

 234, 228, 227

 234, 165, 157

 234, 242, 251

 234, 144, 134

 234, 245, 255

 234, 123, 110

 234, 101, 87

 234, 80, 64

 234, 60, 40

 234, 39, 17

 234, 23, 0

Harmonies

Analogous

The Analogous color harmony consists of three colors that are next to each other on the color wheel.



232, 206, 214



234, 207, 204



230, 216, 197

Triad

The Triadic color harmony groups three colors that are evenly spaced from another and form a triangle on the color wheel.



234, 207, 204



200, 215, 217



202, 211, 232

Complementary

The Complementary color scheme is a pair of colors which are on the opposite of each other on the color wheel.



234, 207, 204



204, 218, 234

Split Complementary

Split-complementary colors differ from the complementary color scheme. The scheme consists of three colors, the original color and two neighbors of the complement color.



193, 207, 229



234, 207, 204



192, 208, 219

Square

The Square scheme is like the rectangle color scheme, but the four colors are evenly spaced on the color wheel.



234, 207, 204



196, 215, 200



189, 204, 221



214, 210, 230

Rectangle

The Rectangle color scheme consists of four colors that form a rectangle on the color wheel.



234, 207, 204



220, 225, 194



189, 204, 221



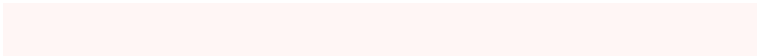
198, 209, 231

Sweetspot

The Sweet Spot groups the original color and five complimentary colors.



234, 207, 204



255, 246, 245



234, 204, 232



128, 122, 121



0, 0, 0



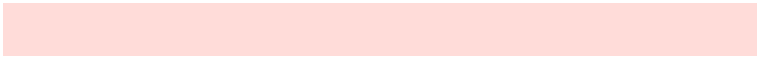
128, 128, 128

Same Dimension

The Same Dimension uses a secret algorithm to generate beautiful new colors.



234, 207, 204



255, 220, 217



224, 234, 204



117, 107, 106



181, 18, 0



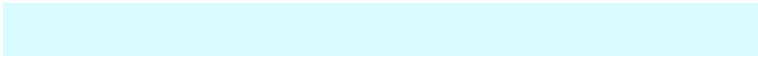
54, 6, 0

Inverse Universe

The Inverse Universe completely reimagines the original color for something new.



204, 218, 234



217, 235, 255



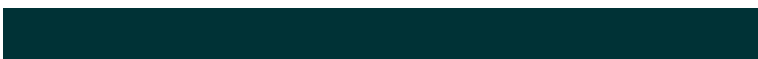
204, 213, 234



106, 111, 117



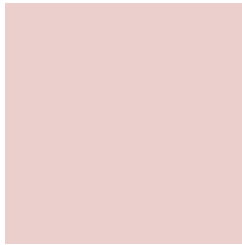
0, 86, 181



0, 26, 54

Previews

White Background



This preview shows how the RYB color 234, 207, 204 looks on a white background.

Color Contrast Check

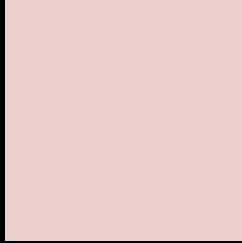
Large Text (above 18pt) WCAG AA × Fail

Any Text WCAG AA × Fail

Large Text (above 18pt) WCAG AAA × Fail

Any Text WCAG AAA × Fail

Black Background



This preview shows how the RYB color 234, 207, 204 looks on a black background.

Color Contrast Check

Large Text (above 18pt) WCAG AA ✓ Pass

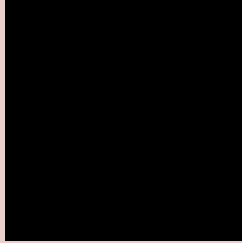
Any Text WCAG AA ✓ Pass

Large Text (above 18pt) WCAG AAA ✓ Pass

Any Text WCAG AAA ✓ Pass

If you want to check with other color combinations, try the [Color Contrast Checker](#).

RYP 234, 207, 204 Background



This preview shows how black text looks on a background with the RYP color 234, 207, 204.



This preview shows how white text looks on a background with the RYP color 234, 207, 204.

Color Blindness Simulation

Color vision deficiency is a very complex topic, and I could not describe the different causes any better than Wikipedia does, so if you want to learn more, you should check out their [article about color blindness](#).

Dichromacy

	Original Color 234, 207, 204
	Protanopia 218, 216, 207
	Deuteranopia 237, 206, 204



Tritanopia
236, 204, 220

Trichromacy



Original Color

234, 207, 204

Protanomaly

224, 211, 206

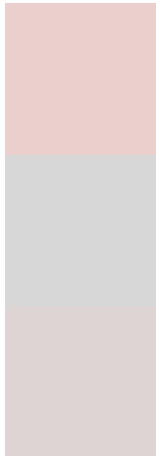
Deuteranomaly

236, 206, 204

Tritanomaly

235, 205, 214

Monochromacy



Original Color

234, 207, 204

Achromatopsia

215, 215, 215

Achromatomaly

222, 212, 211

CSS Examples

Text

The CSS property to change the color of the text to RYB 234, 207, 204 is called "color". The color property can be set on classes, ids or directly on the HTML element.

This example shows how text in the color rgb(234, 207, 204) looks like.

```
.text, #text, p{  
    color:rgb(234, 207, 204)  
}
```

If you want to add a text shadow in that color use the text-shadow property, you can generate a text shadow directly with our [CSS Text Shadow Generator](#).

Here you see how black text with a 4 pixel rgb(234, 207, 204) colored shadow looks like.

```
.shadow{ text-shadow: 4px 4px 2px rgb(234, 207, 204) }
```

Border

The CSS property to change the border of an element to RYB 234, 207, 204 is called "border". The border property can be set on classes, ids or directly on the HTML element.

This example shows the color as border, it can be applied via the CSS property "border" or "border-color".

```
.border, #border, table{ border:4px solid rgb(234, 207, 204) }
```

If only the border color should be changed use the property `border-color`.

```
.border{ border-color:rgb(234, 207, 204) }
```

If you want to add a box shadow in that color use:

Here you see how a box with a 4 pixel `rgb(234, 207, 204)` colored shadow looks like.

```
.boxshadow{ -moz-box-shadow:4px 4px 4px  
4px rgb(234, 207, 204); -webkit-box-  
shadow:4px 4px 4px 4px rgb(234, 207, 204);  
box-shadow:4px 4px 4px 4px rgb(234, 207,  
204) }
```

Background

The CSS property to change the background color of an element to RGB 234, 207, 204 is called "background". The background property can be set on classes, ids or directly on the HTML element.

```
.background, #background, body{  
background: rgb(234, 207, 204) }
```

If only the background color should be changed can be used:

```
.background{ background-color: rgb(234,  
207, 204) }
```

This example shows the color as background, it is applied via the CSS property "background".

To optimize and compress your CSS code, you can use our [online CSS compressor and optimizer](#) based on csstidy. If you want to create a linear or radial gradient as background or border, check our [CSS Gradient Generator](#).

Hey! You found this booklet interesting? Support Converting Colors with the new Membership Option!

The pro membership hides all ads, plus gives you double the colors in the color bucket, and more awesome pro features!

[Learn more, Memberships starting at \\$2.50/m!](#)

**Follow me
on Twitter!**

@ConvertingColor