

Converting Colors

`RYB(235, 103, 149)`

Have a look what the booklet for
RYB(235, 103, 149) contains.

RYB(235, 103, 149)	3
<i>Conversions</i>	4
<i>Details</i>	6
<i>Harmonies</i>	11
<i>Previews</i>	23
<i>Color Blindness Simulation</i>	26
<i>CSS Examples</i>	29

Color

R_YB(235, 103, 149)

Conversions

Conversions Part 1

Format	Color
Hex	EB6795
RGB	235, 103, 149
RGB Percent	92%, 40%, 58%
CMY	0.0784, 0.5961, 0.4157
CMYK	0.00, 0.56, 0.37, 0.08
HSL	339°, 77%, 66%
HSV	339°, 56%, 92%
XYZ	44.5360, 29.5326, 31.7868
YIQ	147.7120, 63.9060, 42.2900

Conversions

Conversions Part 2

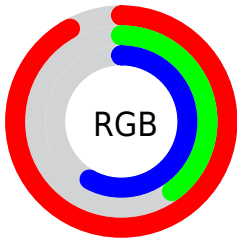
Format	Color
R _Y B	235, 103, 149
Decimal	15427477
CIE Lab	61.25, 55.38, 0.51
CIE LCh	61, 55.387, 0.529
Yxy	29.5326, 0.4207, 0.2790
Android (android.graphics.Color)	4293617557 (0xFFEB6795)
YUV	147.7120, 0.6350, 76.5516
Hunter-Lab	54.3439, 51.1828, 3.3608

Details

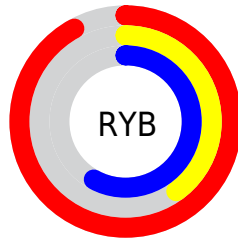
The RYB color **235, 103, 149** is a light color, and the websafe version is hex **FF6699**. A complement of this color would be **103, 183, 235**, and the grayscale version is **148, 148, 148**.

A 20% lighter version of the original color is **255, 158, 203**, and **175, 46, 98** is the 20% darker color. If you saturate the color by 10%, you get **235, 79, 134**, and if you desaturate by 10%, it is **235, 127, 164**.

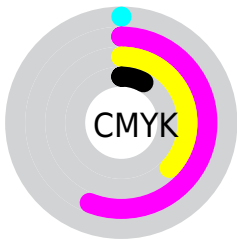
Distribution



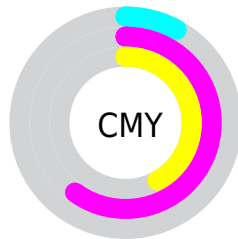
- Red (92%)
- Green (40%)
- Blue (58%)



- Red (92%)
- Yellow (40%)
- Blue (58%)



- Cyan (0%)
- Magenta (56%)
- Yellow (37%)
- Black (8%)



- Cyan (8%)
- Magenta (60%)
- Yellow (42%)

Brightness & Saturation Gradients

These gradients show how the RYB color 235, 103, 149 changes by changing the brightness by 10 percent. The first figure shows a shift by +10% for each color and the second figure -10%.

Similar to the brightness gradients but the following saturation gradients show a change of the RYB color 235, 103, 149 by changing the saturation by 10% instead.

 235, 103, 149

 235, 103, 149

255, 255, 255

 205, 75, 123

 255, 158, 203

 175, 46, 98

 255, 187, 231

 146, 6, 75

 255, 216, 255

 118, 0, 52

 255, 245, 255

 89, 0, 31

 64, 0, 6

 31, 0, 1

 0, 0, 0

 235, 103, 149

 235, 103, 149

■ 235, 79, 134

■ 235, 127, 164

■ 235, 56, 118

■ 235, 150, 180

■ 235, 33, 103

■ 235, 174, 195

■ 235, 9, 88

■ 235, 197, 210

■ 235, 0, 82

■ 235, 221, 226

■ 235, 240, 244

■ 235, 245, 255

Harmonies

Analogous

The Analogous color harmony consists of three colors that are next to each other on the color wheel.



208, 114, 197



235, 103, 149



234, 110, 101

Triad

The Triadic color harmony groups three colors that are evenly spaced from another and form a triangle on the color wheel.



235, 103, 149



57, 159, 92



0, 96, 232

Complementary

The Complementary color scheme is a pair of colors which are on the opposite of each other on the color wheel.



235, 103, 149



103, 183, 235

Split Complementary

Split-complementary colors differ from the complementary color scheme. The scheme consists of three colors, the original color and two neighbors of the complement color.



0, 91, 196



235, 103, 149



52, 136, 168

Square

The Square scheme is like the rectangle color scheme, but the four colors are evenly spaced on the color wheel.



235, 103, 149



76, 173, 42



0, 93, 172



15, 101, 246

Rectangle

The Rectangle color scheme consists of four colors that form a rectangle on the color wheel.



235, 103, 149



221, 144, 73



0, 93, 172



0, 96, 223

Sweetspot

The Sweet Spot groups the original color and five complimentary colors.



235, 103, 149



255, 212, 227



189, 103, 235



128, 102, 111



0, 0, 0



128, 128, 128

Same Dimension

The Same Dimension uses a secret algorithm to generate beautiful new colors.



235, 103, 149



255, 84, 144



235, 127, 103



117, 106, 110



181, 0, 63



54, 0, 19

Inverse Universe

The Inverse Universe completely reimagines the original color for something new.



235, 103, 149



255, 84, 144



103, 164, 235



117, 106, 110



181, 0, 63



54, 0, 19

Previews

White Background



This preview shows how the RYB color 235, 103, 149 looks on a white background.

Color Contrast Check

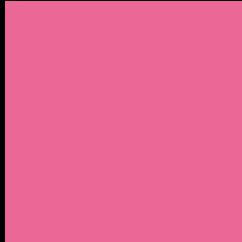
Large Text (above 18pt) WCAG AA ✓ Pass

Any Text WCAG AA × Fail

Large Text (above 18pt) WCAG AAA × Fail

Any Text WCAG AAA × Fail

Black Background



This preview shows how the RYB color 235, 103, 149 looks on a black background.

Color Contrast Check

Large Text (above 18pt) WCAG AA ✓ Pass

Any Text WCAG AA ✓ Pass

Large Text (above 18pt) WCAG AAA ✓ Pass

Any Text WCAG AAA × Fail

If you want to check with other color combinations, try the [Color Contrast Checker](#).

RGB 235, 103, 149 Background



This preview shows how black text looks on a background with the RGB color 235, 103, 149.

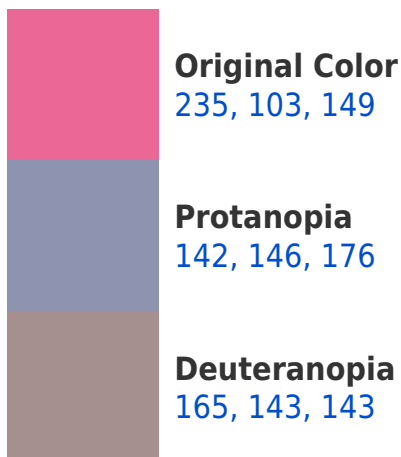



This preview shows how white text looks on a background with the RGB color 235, 103, 149.

Color Blindness Simulation

Color vision deficiency is a very complex topic, and I could not describe the different causes any better than Wikipedia does, so if you want to learn more, you should check out their [article about color blindness](#).

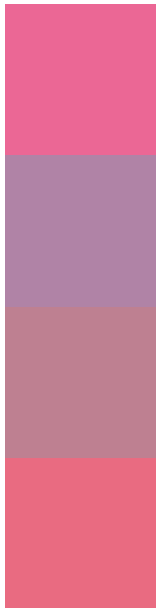
Dichromacy





Tritanopia
232, 109, 117

Trichromacy



Original Color
235, 103, 149

Protanomaly
176, 131, 166

Deuteranomaly
190, 128, 145

Tritanomaly
233, 107, 129

Monochromacy



Original Color
235, 103, 149

Achromatopsia
148, 148, 148

Achromatomaly
180, 132, 148

CSS Examples

Text

The CSS property to change the color of the text to RYB 235, 103, 149 is called "color". The color property can be set on classes, ids or directly on the HTML element.

This example shows how text in the color `rgb(235, 103, 149)` looks like.

```
.text, #text, p{  
    color:rgb(235, 103, 149)  
}
```

If you want to add a text shadow in that color use the text-shadow property, you can generate a text shadow directly with our [CSS Text Shadow Generator](#).

Here you see how black text with a 4 pixel rgb(235, 103, 149) colored shadow looks like.

```
.shadow{ text-shadow: 4px 4px 2px rgb(235, 103, 149) }
```

Border

The CSS property to change the border of an element to RYB 235, 103, 149 is called "border". The border property can be set on classes, ids or directly on the HTML element.

This example shows the color as border, it can be applied via the CSS property "border" or "border-color".

```
.border, #border, table{ border:4px solid rgb(235, 103, 149) }
```

If only the border color should be changed use the property `border-color`.

```
.border{ border-color:rgb(235, 103, 149) }
```

If you want to add a box shadow in that color use:

Here you see how a box with a 4 pixel `rgb(235, 103, 149)` colored shadow looks like.

```
.boxshadow{ -moz-box-shadow:4px 4px 4px  
4px rgb(235, 103, 149); -webkit-box-  
shadow:4px 4px 4px 4px rgb(235, 103, 149);  
box-shadow:4px 4px 4px 4px rgb(235, 103,  
149) }
```

Background

The CSS property to change the background color of an element to RGB 235, 103, 149 is called "background". The background property can be set on classes, ids or directly on the HTML element.

```
.background, #background, body{  
background: rgb(235, 103, 149) }
```

If only the background color should be changed can be used:

```
.background{ background-color: rgb(235,  
103, 149) }
```

This example shows the color as background, it is applied via the CSS property "background".

To optimize and compress your CSS code, you can use our [online CSS compressor and optimizer](#) based on csstidy. If you want to create a linear or radial gradient as background or border, check our [CSS Gradient Generator](#).

Hey! You found this booklet interesting? Support Converting Colors with the new Membership Option!

The pro membership hides all ads, plus gives you double the colors in the color bucket, and more awesome pro features!

[Learn more, Memberships starting at \\$2.50/m!](#)

**Follow me
on Twitter!**

@ConvertingColor