

Converting Colors

`RYB(235, 138, 164)`

Have a look what the booklet for
RYB(235, 138, 164) contains.

RYB(235, 138, 164)	3
<i>Conversions</i>	4
<i>Details</i>	6
<i>Harmonies</i>	11
<i>Previews</i>	23
<i>Color Blindness Simulation</i>	26
<i>CSS Examples</i>	29

Color

`RYB(235, 138, 164)`

Conversions

Conversions Part 1

Format	Color
Hex	EB8AA4
RGB	235, 138, 164
RGB Percent	92%, 54%, 64%
CMY	0.0784, 0.4588, 0.3569
CMYK	0.00, 0.41, 0.30, 0.08
HSL	344°, 71%, 73%
HSV	344°, 41%, 92%
XYZ	50.0503, 38.5195, 39.9190
YIQ	169.9670, 49.4660, 28.6500

Conversions

Conversions Part 2

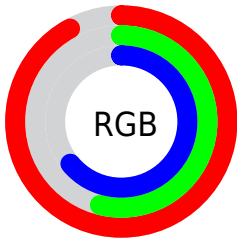
Format	Color
RYB	235, 138, 164
Decimal	15436452
CIELab	68.40, 39.96, 2.38
CIELCh	68, 40.033, 3.404
Yxy	38.5195, 0.3895, 0.2998
Android (android.graphics.Color)	4293626532 (0xFFEB8AA4)
YUV	169.9670, -2.9417, 57.0339
Hunter-Lab	62.0640, 35.3355, 5.3101

Details

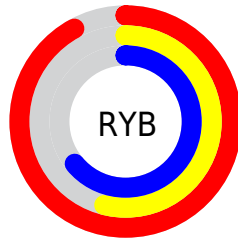
The RYB color **235, 138, 164** is a light color, and the websafe version is hex **FF99CC**. A complement of this color would be **138, 194, 235**, and the grayscale version is **170, 170, 170**.

A 20% lighter version of the original color is **255, 193, 219**, and **177, 86, 112** is the 20% darker color. If you saturate the color by 10%, you get **235, 115, 147**, and if you desaturate by 10%, it is **235, 162, 181**.

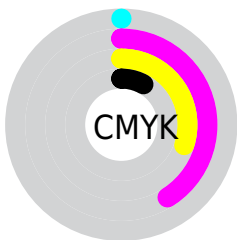
Distribution



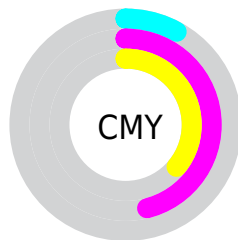
- Red (92%)
- Green (54%)
- Blue (64%)



- Red (92%)
- Yellow (54%)
- Blue (64%)



- Cyan (0%)
- Magenta (41%)
- Yellow (30%)
- Black (8%)



- Cyan (8%)
- Magenta (46%)
- Yellow (36%)

Brightness & Saturation Gradients

These gradients show how the RYB color 235, 138, 164 changes by changing the brightness by 10 percent. The first figure shows a shift by +10% for each color and the second figure -10%.

Similar to the brightness gradients but the following saturation gradients show a change of the RYB color 235, 138, 164 by changing the saturation by 10% instead.

 235, 138, 164

 235, 138, 164

255, 255, 255

 206, 112, 138

 255, 193, 219

 177, 86, 112

 255, 221, 247

 149, 60, 88

 255, 250, 255

 121, 34, 65

 94, 3, 43

 67, 0, 23

 45, 0, 1

 0, 0, 0

 235, 138, 164

 235, 138, 164

■ 235, 115, 147

■ 235, 162, 181

■ 235, 91, 130

■ 235, 185, 198

■ 235, 68, 112

■ 235, 209, 216

■ 235, 44, 95

■ 235, 232, 233

■ 235, 21, 78

■ 235, 246, 255

■ 235, 0, 63

■ 235, 245, 255

Harmonies

Analogous

The Analogous color harmony consists of three colors that are next to each other on the color wheel.



216, 144, 200



235, 138, 164



234, 144, 129

Triad

The Triadic color harmony groups three colors that are evenly spaced from another and form a triangle on the color wheel.



235, 138, 164



105, 176, 133



42, 121, 231

Complementary

The Complementary color scheme is a pair of colors which are on the opposite of each other on the color wheel.



235, 138, 164



138, 194, 235

Split Complementary

Split-complementary colors differ from the complementary color scheme. The scheme consists of three colors, the original color and two neighbors of the complement color.



0, 97, 205



235, 138, 164



103, 161, 183

Square

The Square scheme is like the rectangle color scheme, but the four colors are evenly spaced on the color wheel.



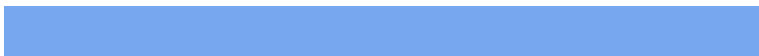
235, 138, 164



118, 186, 93



44, 119, 186



119, 154, 239

Rectangle

The Rectangle color scheme consists of four colors that form a rectangle on the color wheel.



235, 138, 164



224, 169, 110



44, 119, 186



0, 100, 224

Sweetspot

The Sweet Spot groups the original color and five complimentary colors.



235, 138, 164



255, 224, 233



208, 138, 235



128, 110, 114



0, 0, 0



128, 128, 128

Same Dimension

The Same Dimension uses a secret algorithm to generate beautiful new colors.



235, 138, 164



255, 128, 162



235, 165, 138



117, 106, 109



181, 0, 49



54, 0, 14

Inverse Universe

The Inverse Universe completely reimagines the original color for something new.



235, 138, 164



255, 128, 162



138, 181, 235



117, 106, 109



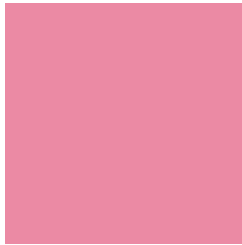
181, 0, 49



54, 0, 14

Previews

White Background



This preview shows how the RYB color 235, 138, 164 looks on a white background.

Color Contrast Check

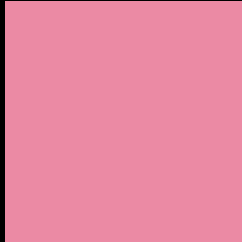
Large Text (above 18pt) WCAG AA × Fail

Any Text WCAG AA × Fail

Large Text (above 18pt) WCAG AAA × Fail

Any Text WCAG AAA × Fail

Black Background



This preview shows how the RYB color 235, 138, 164 looks on a black background.

Color Contrast Check

Large Text (above 18pt) WCAG AA ✓ Pass

Any Text WCAG AA ✓ Pass

Large Text (above 18pt) WCAG AAA ✓ Pass

Any Text WCAG AAA ✓ Pass

If you want to check with other color combinations, try the [Color Contrast Checker](#).

RYB 235, 138, 164 Background



This preview shows how black text looks on a background with the RYB color 235, 138, 164.



This preview shows how white text looks on a background with the RYB color 235, 138, 164.

Color Blindness Simulation

Color vision deficiency is a very complex topic, and I could not describe the different causes any better than Wikipedia does, so if you want to learn more, you should check out their [article about color blindness](#).


Dichromacy



Original Color
235, 138, 164

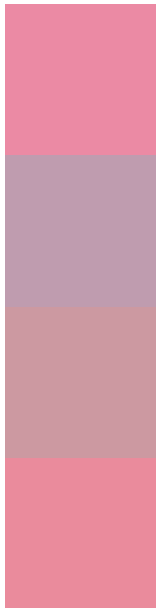
Protanopia
166, 166, 181

Deuteranopia
186, 162, 160



Tritanopia
234, 140, 151

Trichromacy



Original Color
235, 138, 164

Protanomaly
191, 156, 175

Deuteranomaly
204, 153, 161

Tritanomaly
234, 139, 156

Monochromacy



Original Color
235, 138, 164

Achromatopsia
170, 170, 170

Achromatomaly
194, 158, 168

CSS Examples

Text

The CSS property to change the color of the text to RYB 235, 138, 164 is called "color". The color property can be set on classes, ids or directly on the HTML element.

This example shows how text in the color rgb(235, 138, 164) looks like.

```
.text, #text, p{  
    color:rgb(235, 138, 164)  
}
```

If you want to add a text shadow in that color use the text-shadow property, you can generate a text shadow directly with our [CSS Text Shadow Generator](#).

Here you see how black text with a 4 pixel rgb(235, 138, 164) colored shadow looks like.

```
.shadow{ text-shadow: 4px 4px 2px rgb(235, 138, 164) }
```

Border

The CSS property to change the border of an element to RYB 235, 138, 164 is called "border". The border property can be set on classes, ids or directly on the HTML element.

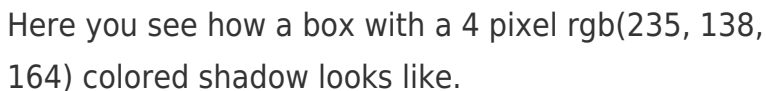
This example shows the color as border, it can be applied via the CSS property "border" or "border-color".

```
.border, #border, table{ border:4px solid rgb(235, 138, 164) }
```

If only the border color should be changed use the property border-color.

```
.border{ border-color:rgb(235, 138, 164) }
```

If you want to add a box shadow in that color use:



Here you see how a box with a 4 pixel rgb(235, 138, 164) colored shadow looks like.

```
.boxshadow{ -moz-box-shadow:4px 4px 4px  
4px rgb(235, 138, 164); -webkit-box-  
shadow:4px 4px 4px 4px rgb(235, 138, 164);  
box-shadow:4px 4px 4px 4px rgb(235, 138,  
164) }
```

Background

The CSS property to change the background color of an element to RGB 235, 138, 164 is called "background". The background property can be set on classes, ids or directly on the HTML element.

```
.background, #background, body{  
background: rgb(235, 138, 164) }
```

If only the background color should be changed can be used:

```
.background{ background-color: rgb(235,  
138, 164) }
```

This example shows the color as background, it is applied via the CSS property "background".

To optimize and compress your CSS code, you can use our [online CSS compressor and optimizer](#) based on csstidy. If you want to create a linear or radial gradient as background or border, check our [CSS Gradient Generator](#).

Hey! You found this booklet interesting? Support Converting Colors with the new Membership Option!

The pro membership hides all ads, plus gives you double the colors in the color bucket, and more awesome pro features!

[Learn more, Memberships starting at \\$2.50/m!](#)

**Follow me
on Twitter!**

@ConvertingColor