

# Converting Colors

`RYB(235, 216, 223)`

Have a look what the booklet for  
RYB(235, 216, 223) contains.

<b>RYB(235, 216, 223)</b> .....	3
<b><i>Conversions</i></b> .....	4
<b><i>Details</i></b> .....	6
<b><i>Harmonies</i></b> .....	11
<b><i>Previews</i></b> .....	23
<b><i>Color Blindness Simulation</i></b> .....	26
<b><i>CSS Examples</i></b> .....	29

# **Color**

**$\text{RYB}(235, 216, 223)$**

# Conversions

## Conversions Part 1

Format	Color
Hex	EBD8DF
RGB	235, 216, 223
RGB Percent	92%, 85%, 87%
CMY	0.0784, 0.1529, 0.1255
CMYK	0.00, 0.08, 0.05, 0.08
HSL	338°, 32%, 88%
HSV	338°, 8%, 92%
XYZ	72.1361, 72.1016, 79.9271
YIQ	222.4790, 9.0770, 6.2050

# Conversions

## Conversions Part 2

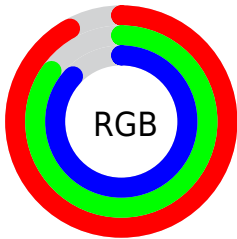
Format	Color
R <sub>Y</sub> B	235, 216, 223
Decimal	15456479
CIE Lab	88.02, 7.73, -1.08
CIE LCh	88, 7.804, 352.080
Yxy	72.1016, 0.3218, 0.3216
Android (android.graphics.Color)	4293646559 (0xFFEBD8DF)
YUV	222.4790, 0.2569, 10.9809
Hunter-Lab	84.9127, 3.0444, 3.6301

# Details

The RYB color **235, 216, 223** is a light color, and the websafe version is hex **CCCCCC**. A complement of this color would be **216, 228, 235**, and the grayscale version is **222, 222, 222**.

A 20% lighter version of the original color is **255, 255, 255**, and **179, 161, 168** is the 20% darker color. If you saturate the color by 10%, you get **235, 193, 208**, and if you desaturate by 10%, it is **235, 238, 240**.

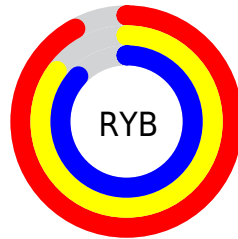
# Distribution



Red (92%)

Green (85%)

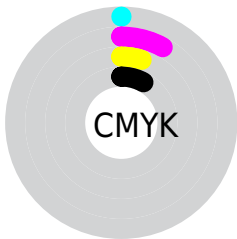
Blue (87%)



Red (92%)

Yellow (85%)

Blue (87%)

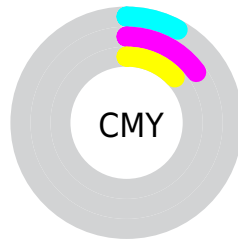


Cyan (0%)

Magenta (8%)

Yellow (5%)

Black (8%)



Cyan (8%)

Magenta (15%)

Yellow (13%)

# Brightness & Saturation Gradients

These gradients show how the RYB color 235, 216, 223 changes by changing the brightness by 10 percent. The first figure shows a shift by +10% for each color and the second figure -10%.

Similar to the brightness gradients but the following saturation gradients show a change of the RYB color 235, 216, 223 by changing the saturation by 10% instead.



■ 235, 216, 223

255, 255, 255

■ 235, 216, 223

■ 207, 188, 195

■ 179, 161, 168

■ 152, 135, 141

■ 126, 110, 116

■ 101, 85, 91

■ 77, 62, 68

■ 54, 40, 46

■ 33, 20, 25

■ 0, 0, 0

 235, 216, 223

 235, 216, 223

 235, 193, 208

 235, 238, 240

 235, 169, 193


 235, 246, 255

 235, 146, 178

 235, 245, 255

 235, 122, 164

 235, 98, 149

 235, 75, 134

 235, 52, 119

 235, 28, 104

 235, 4, 89

# Harmonies

## Analogous

The Analogous color harmony consists of three colors that are next to each other on the color wheel.



229, 217, 230



235, 216, 223



237, 216, 215

# Triad

The Triadic color harmony groups three colors that are evenly spaced from another and form a triangle on the color wheel.



235, 216, 223



207, 222, 208



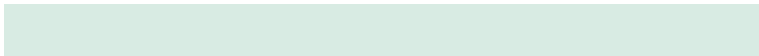
205, 216, 232

# Complementary

The Complementary color scheme is a pair of colors which are on the opposite of each other on the color wheel.



235, 216, 223



216, 228, 235

# Split Complementary

Split-complementary colors differ from the complementary color scheme. The scheme consists of three colors, the original color and two neighbors of the complement color.



203, 214, 226



235, 216, 223



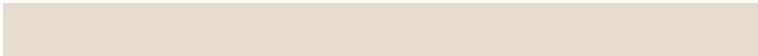
211, 224, 223

# Square

The Square scheme is like the rectangle color scheme, but the four colors are evenly spaced on the color wheel.



235, 216, 223



221, 229, 206



206, 218, 225



211, 219, 235

# Rectangle

The Rectangle color scheme consists of four colors that form a rectangle on the color wheel.



235, 216, 223



236, 219, 211



206, 218, 225



204, 216, 230



# Sweetspot

The Sweet Spot groups the original color and five complimentary colors.



235, 216, 223



255, 250, 252



228, 216, 235



128, 125, 126



0, 0, 0



128, 128, 128



# Same Dimension

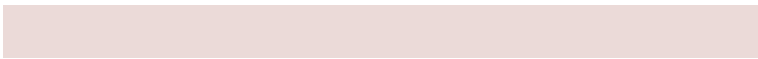
The Same Dimension uses a secret algorithm to generate beautiful new colors.



235, 216, 223



255, 230, 239



235, 218, 216



117, 106, 110



181, 0, 67



54, 0, 20



# Inverse Universe

The Inverse Universe completely reimagines the original color for something new.



235, 216, 223



255, 230, 239



216, 225, 235



117, 106, 110



181, 0, 67

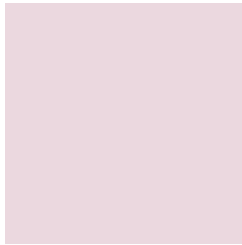


54, 0, 20



# Previews

## White Background



This preview shows how the RYB color 235, 216, 223 looks on a white background.

## Color Contrast Check

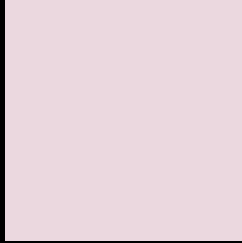
Large Text (above 18pt) WCAG AA × Fail

Any Text WCAG AA × Fail

Large Text (above 18pt) WCAG AAA × Fail

Any Text WCAG AAA × Fail

# Black Background



This preview shows how the RYB color 235, 216, 223 looks on a black background.

## Color Contrast Check

Large Text (above 18pt) WCAG AA ✓ Pass

Any Text WCAG AA ✓ Pass

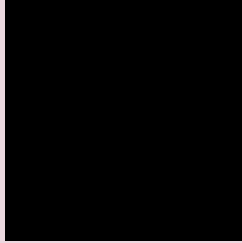
Large Text (above 18pt) WCAG AAA ✓ Pass

Any Text WCAG AAA ✓ Pass

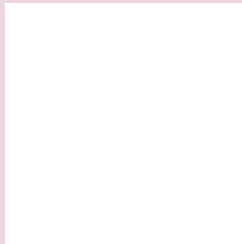
If you want to check with other color combinations, try the [Color Contrast Checker](#).



## **RYB 235, 216, 223 Background**



This preview shows how black text looks on a background with the RYB color 235, 216, 223.

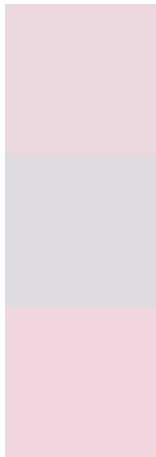


This preview shows how white text looks on a background with the RYB color 235, 216, 223.

# Color Blindness Simulation

Color vision deficiency is a very complex topic, and I could not describe the different causes any better than Wikipedia does, so if you want to learn more, you should check out their [article about color blindness](#).

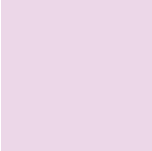
## Dichromacy



**Original Color**  
235, 216, 223

**Protanopia**  
223, 220, 225

**Deuteranopia**  
241, 214, 223



**Tritanopia**  
236, 215, 232

# Trichromacy



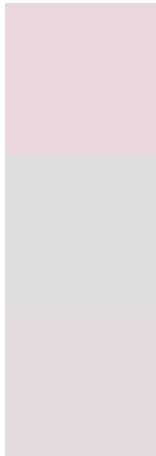
**Original Color**  
235, 216, 223

**Protanomaly**  
227, 219, 224

**Deuteranomaly**  
239, 215, 223

**Tritanomaly**  
236, 215, 229

# Monochromacy



**Original Color**  
235, 216, 223

**Achromatopsia**  
222, 222, 222

**Achromatomaly**  
227, 220, 222

# CSS Examples

## Text

The CSS property to change the color of the text to RYB 235, 216, 223 is called "color". The color property can be set on classes, ids or directly on the HTML element.

This example shows how text in the color rgb(235, 216, 223) looks like.

```
.text, #text, p{  
    color:rgb(235, 216, 223)  
}
```

If you want to add a text shadow in that color use the text-shadow property, you can generate a text shadow directly with our [CSS Text Shadow Generator](#).

Here you see how black text with a 4 pixel rgb(235, 216, 223) colored shadow looks like.

```
.shadow{ text-shadow: 4px 4px 2px rgb(235, 216, 223) }
```

## Border

The CSS property to change the border of an element to RYB 235, 216, 223 is called "border". The border property can be set on classes, ids or directly on the HTML element.

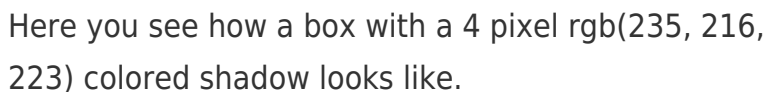
This example shows the color as border, it can be applied via the CSS property "border" or "border-color".

```
.border, #border, table{ border:4px solid rgb(235, 216, 223) }
```

If only the border color should be changed use the property `border-color`.

```
.border{ border-color:rgb(235, 216, 223) }
```

If you want to add a box shadow in that color use:



Here you see how a box with a 4 pixel `rgb(235, 216, 223)` colored shadow looks like.

```
.boxshadow{ -moz-box-shadow:4px 4px 4px 4px rgb(235, 216, 223); -webkit-box-shadow:4px 4px 4px 4px rgb(235, 216, 223); box-shadow:4px 4px 4px 4px rgb(235, 216, 223) }
```

# Background

The CSS property to change the background color of an element to RYB 235, 216, 223 is called "background". The background property can be set on classes, ids or directly on the HTML element.

```
.background, #background, body{  
background: rgb(235, 216, 223) }
```

If only the background color should be changed can be used:

```
.background{ background-color: rgb(235,  
216, 223) }
```

This example shows the color as background, it is applied via the CSS property "background".

To optimize and compress your CSS code, you can use our [online CSS compressor and optimizer](#) based on csstidy. If you want to create a linear or radial gradient as background or border, check our [CSS Gradient Generator](#).



Hey! You found this booklet interesting? Support Converting Colors with the new Membership Option!

The pro membership hides all ads, plus gives you double the colors in the color bucket, and more awesome pro features!

**[Learn more, Memberships starting at \\$2.50/m!](#)**

**Follow me  
on Twitter!**

@ConvertingColor