

Converting Colors

`RYB(236, 211, 217)`

Have a look what the booklet for
RYB(236, 211, 217) contains.

RYB(236, 211, 217)	3
<i>Conversions</i>	4
<i>Details</i>	6
<i>Harmonies</i>	11
<i>Previews</i>	23
<i>Color Blindness Simulation</i>	26
<i>CSS Examples</i>	29

Color

R_YB(236, 211, 217)

Conversions

Conversions Part 1

Format	Color
Hex	ECD3D9
RGB	236, 211, 217
RGB Percent	93%, 83%, 85%
CMY	0.0745, 0.1725, 0.1490
CMYK	0.00, 0.11, 0.08, 0.07
HSL	346°, 40%, 88%
HSV	346°, 11%, 93%
XYZ	70.4107, 69.4312, 75.3361
YIQ	219.1590, 12.9740, 7.1660

Conversions

Conversions Part 2

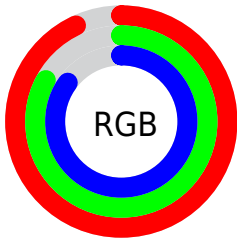
Format	Color
R _Y B	236, 211, 217
Decimal	15520729
CIE Lab	86.72, 9.67, 0.21
CIE LCh	87, 9.671, 1.216
Yxy	69.4312, 0.3272, 0.3227
Android (android.graphics.Color)	4293710809 (0xFFECD3D9)
YUV	219.1590, -1.0644, 14.7696
Hunter-Lab	83.3254, 5.0148, 4.7225

Details

The RYB color **236, 211, 217** is a light color, and the websafe version is hex **FFCCCC**. A complement of this color would be **211, 225, 236**, and the grayscale version is **219, 219, 219**.

A 20% lighter version of the original color is 255, 255, 255, and **180, 156, 162** is the 20% darker color. If you saturate the color by 10%, you get **236, 187, 199**, and if you desaturate by 10%, it is **236, 235, 235**.

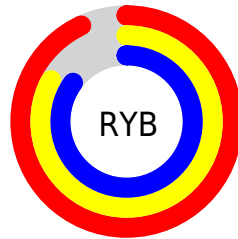
Distribution



Red (93%)

Green (83%)

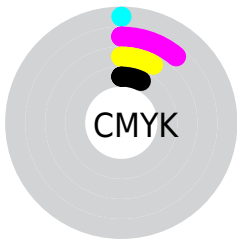
Blue (85%)



Red (93%)

Yellow (83%)

Blue (85%)

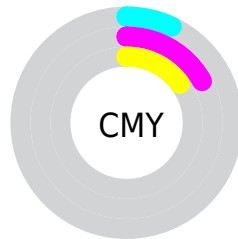


Cyan (0%)

Magenta (11%)

Yellow (8%)

Black (7%)



Cyan (7%)

Magenta (17%)

Yellow (15%)

Brightness & Saturation Gradients

These gradients show how the RYB color 236, 211, 217 changes by changing the brightness by 10 percent. The first figure shows a shift by +10% for each color and the second figure -10%.


Similar to the brightness gradients but the following saturation gradients show a change of the RYB color 236, 211, 217 by changing the saturation by 10% instead.

 236, 211, 217

255, 255, 255

 236, 211, 217


 208, 183, 189

 180, 156, 162


 153, 130, 136

 127, 105, 111

 102, 81, 86

 78, 58, 63


 55, 36, 41

 33, 16, 21

 0, 0, 0

 236, 211, 217

 236, 211, 217

 236, 187, 199


 236, 235, 235

 236, 164, 181


 236, 246, 255

 236, 140, 163

 236, 246, 255

 236, 117, 145

 236, 93, 127

 236, 69, 109

 236, 46, 91

 236, 22, 74

 236, 0, 57

Harmonies

Analogous

The Analogous color harmony consists of three colors that are next to each other on the color wheel.



230, 212, 226



236, 211, 217



237, 213, 208

Triad

The Triadic color harmony groups three colors that are evenly spaced from another and form a triangle on the color wheel.



236, 211, 217



201, 219, 206



199, 212, 233

Complementary

The Complementary color scheme is a pair of colors which are on the opposite of each other on the color wheel.



236, 211, 217



211, 225, 236

Split Complementary

Split-complementary colors differ from the complementary color scheme. The scheme consists of three colors, the original color and two neighbors of the complement color.



195, 209, 226



236, 211, 217



204, 219, 222

Square

The Square scheme is like the rectangle color scheme, but the four colors are evenly spaced on the color wheel.



236, 211, 217



211, 225, 199



197, 212, 223



208, 215, 235

Rectangle

The Rectangle color scheme consists of four colors that form a rectangle on the color wheel.



236, 211, 217



235, 218, 203



197, 212, 223



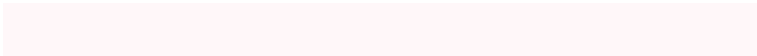
197, 211, 231

Sweetspot

The Sweet Spot groups the original color and five complimentary colors.



236, 211, 217



255, 247, 249



230, 211, 236



128, 122, 124



0, 0, 0



128, 128, 128

Same Dimension

The Same Dimension uses a secret algorithm to generate beautiful new colors.



236, 211, 217



255, 222, 230



236, 219, 211



117, 106, 108



181, 0, 43



54, 0, 13

Inverse Universe

The Inverse Universe completely reimagines the original color for something new.



236, 211, 217



255, 222, 230



211, 222, 236



117, 106, 108



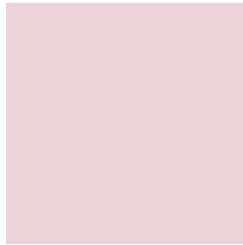
181, 0, 43



54, 0, 13

Previews

White Background



This preview shows how the RYB color 236, 211, 217 looks on a white background.

Color Contrast Check

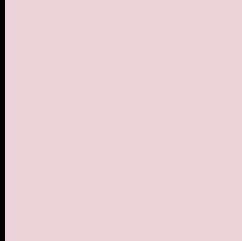
Large Text (above 18pt) WCAG AA × Fail

Any Text WCAG AA × Fail

Large Text (above 18pt) WCAG AAA × Fail

Any Text WCAG AAA × Fail

Black Background



This preview shows how the RYB color 236, 211, 217 looks on a black background.

Color Contrast Check

Large Text (above 18pt) WCAG AA ✓ Pass

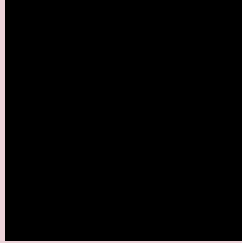
Any Text WCAG AA ✓ Pass

Large Text (above 18pt) WCAG AAA ✓ Pass

Any Text WCAG AAA ✓ Pass

If you want to check with other color combinations, try the [Color Contrast Checker](#).

RYB 236, 211, 217 Background



This preview shows how black text looks on a background with the RYB color 236, 211, 217.

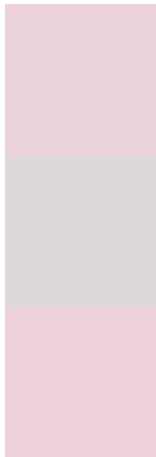


This preview shows how white text looks on a background with the RYB color 236, 211, 217.

Color Blindness Simulation

Color vision deficiency is a very complex topic, and I could not describe the different causes any better than Wikipedia does, so if you want to learn more, you should check out their [article about color blindness](#).


Dichromacy



Original Color
236, 211, 217

Protanopia
220, 216, 220

Deuteranopia
238, 210, 217



Tritanopia
237, 210, 226

Trichromacy



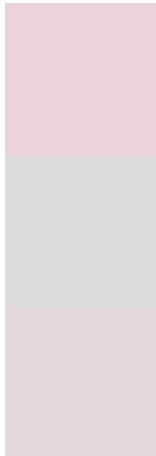
Original Color
236, 211, 217

Protanomaly
226, 214, 219

Deuteranomaly
237, 210, 217

Tritanomaly
237, 210, 223

Monochromacy



Original Color
236, 211, 217

Achromatopsia
219, 219, 219

Achromatomaly
225, 216, 218

CSS Examples

Text

The CSS property to change the color of the text to RGB 236, 211, 217 is called "color". The color property can be set on classes, ids or directly on the HTML element.

This example shows how text in the color rgb(236, 211, 217) looks like.

```
.text, #text, p{  
    color:rgb(236, 211, 217)  
}
```

If you want to add a text shadow in that color use the text-shadow property, you can generate a text shadow directly with our [CSS Text Shadow Generator](#).

Here you see how black text with a 4 pixel rgb(236, 211, 217) colored shadow looks like.

```
.shadow{ text-shadow: 4px 4px 2px rgb(236, 211, 217) }
```

Border

The CSS property to change the border of an element to RYB 236, 211, 217 is called "border". The border property can be set on classes, ids or directly on the HTML element.

This example shows the color as border, it can be applied via the CSS property "border" or "border-color".

```
.border, #border, table{ border:4px solid rgb(236, 211, 217) }
```

If only the border color should be changed use the property `border-color`.

```
.border{ border-color:rgb(236, 211, 217) }
```

If you want to add a box shadow in that color use:

Here you see how a box with a 4 pixel `rgb(236, 211, 217)` colored shadow looks like.

```
.boxshadow{ -moz-box-shadow:4px 4px 4px  
4px rgb(236, 211, 217); -webkit-box-  
shadow:4px 4px 4px 4px rgb(236, 211, 217);  
box-shadow:4px 4px 4px 4px rgb(236, 211,  
217) }
```

Background

The CSS property to change the background color of an element to RGB 236, 211, 217 is called "background". The background property can be set on classes, ids or directly on the HTML element.

```
.background, #background, body{  
background: rgb(236, 211, 217) }
```

If only the background color should be changed can be used:

```
.background{ background-color: rgb(236,  
211, 217) }
```

This example shows the color as background, it is applied via the CSS property "background".

To optimize and compress your CSS code, you can use our [online CSS compressor and optimizer](#) based on csstidy. If you want to create a linear or radial gradient as background or border, check our [CSS Gradient Generator](#).

Hey! You found this booklet interesting? Support Converting Colors with the new Membership Option!

The pro membership hides all ads, plus gives you double the colors in the color bucket, and more awesome pro features!

[Learn more, Memberships starting at \\$2.50/m!](#)

**Follow me
on Twitter!**

@ConvertingColor