

Converting Colors

`RYB(237, 126, 142)`

Have a look what the booklet for
RYB(237, 126, 142) contains.

RYB(237, 126, 142)	3
<i>Conversions</i>	4
<i>Details</i>	6
<i>Harmonies</i>	11
<i>Previews</i>	23
<i>Color Blindness Simulation</i>	26
<i>CSS Examples</i>	29

Color

`RYB(237, 126, 142)`

Conversions

Conversions Part 1

Format	Color
Hex	ED7E8E
RGB	237, 126, 142
RGB Percent	93%, 49%, 56%
CMY	0.0706, 0.5059, 0.4431
CMYK	0.00, 0.47, 0.40, 0.07
HSL	351°, 76%, 71%
HSV	351°, 47%, 93%
XYZ	47.2684, 34.8792, 29.8322
YIQ	161.0130, 61.0200, 28.5080

Conversions

Conversions Part 2

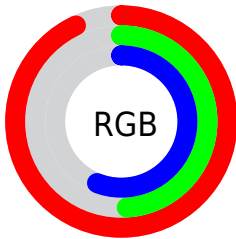
Format	Color
R _Y B	237, 126, 142
Decimal	15564430
CIE Lab	65.65, 44.18, 10.88
CIE LCh	66, 45.501, 13.841
Yxy	34.8792, 0.4221, 0.3115
Android (android.graphics.Color)	4293754510 (0xFFED7E8E)
YUV	161.0130, -9.3734, 66.6406
Hunter-Lab	59.0586, 39.5123, 11.3919

Details

The RYB color **237, 126, 142** is a light color, and the websafe version is hex **FF9999**. A complement of this color would be **126, 186, 237**, and the grayscale version is **161, 161, 161**.

A 20% lighter version of the original color is **255, 181, 196**, and **178, 73, 92** is the 20% darker color. If you saturate the color by 10%, you get **237, 102, 122**, and if you desaturate by 10%, it is **237, 150, 162**.

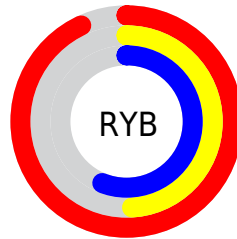
Distribution



Red (93%)

Green (49%)

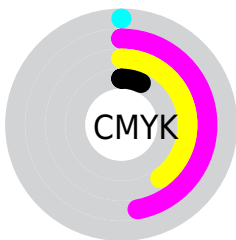
Blue (56%)



Red (93%)

Yellow (49%)

Blue (56%)

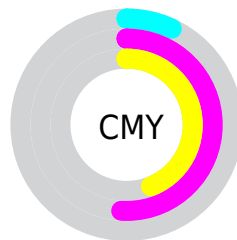


Cyan (0%)

Magenta (47%)

Yellow (40%)

Black (7%)



Cyan (7%)

Magenta (51%)

Yellow (44%)

Brightness & Saturation Gradients

These gradients show how the RYB color 237, 126, 142 changes by changing the brightness by 10 percent. The first figure shows a shift by +10% for each color and the second figure -10%.

Similar to the brightness gradients but the following saturation gradients show a change of the RYB color 237, 126, 142 by changing the saturation by 10% instead.

 237, 126, 142

 237, 126, 142

255, 255, 255

 207, 99, 116

 255, 181, 196

 178, 73, 92

 255, 209, 223

 149, 47, 69

 255, 238, 252

 120, 17, 46

 93, 0, 26

 66, 0, 0

 39, 0, 1

 0, 0, 0

 237, 126, 142

 237, 126, 142

■ 237, 102, 122

■ 237, 150, 162

■ 237, 79, 101

■ 237, 173, 183

■ 237, 55, 81

■ 237, 197, 203

■ 237, 31, 61

■ 237, 221, 223

■ 237, 7, 41

■ 237, 241, 244

■ 237, 0, 34

■ 237, 246, 255

Harmonies

Analogous

The Analogous color harmony consists of three colors that are next to each other on the color wheel.



224, 129, 183



237, 126, 142



228, 145, 105

Triad

The Triadic color harmony groups three colors that are evenly spaced from another and form a triangle on the color wheel.



237, 126, 142



99, 173, 152



1, 99, 237

Complementary

The Complementary color scheme is a pair of colors which are on the opposite of each other on the color wheel.



237, 126, 142



126, 186, 237

Split Complementary

Split-complementary colors differ from the complementary color scheme. The scheme consists of three colors, the original color and two neighbors of the complement color.



0, 97, 215



237, 126, 142



58, 132, 179

Square

The Square scheme is like the rectangle color scheme, but the four colors are evenly spaced on the color wheel.



237, 126, 142



81, 166, 78



0, 91, 180



127, 151, 239

Rectangle

The Rectangle color scheme consists of four colors that form a rectangle on the color wheel.



237, 126, 142



213, 191, 87



0, 91, 180



0, 99, 232

Sweetspot

The Sweet Spot groups the original color and five complimentary colors.



237, 126, 142



255, 219, 224



220, 126, 237



128, 106, 109



0, 0, 0



128, 128, 128

Same Dimension

The Same Dimension uses a secret algorithm to generate beautiful new colors.



237, 126, 142



255, 112, 133



237, 186, 126



117, 106, 107



181, 0, 26



54, 0, 8

Inverse Universe

The Inverse Universe completely reimagines the original color for something new.



237, 126, 142



255, 112, 133



126, 170, 237



117, 106, 107



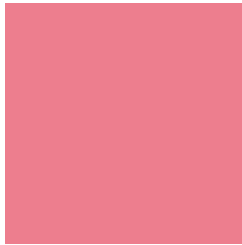
181, 0, 26



54, 0, 8

Previews

White Background



This preview shows how the RYB color 237, 126, 142 looks on a white background.

Color Contrast Check

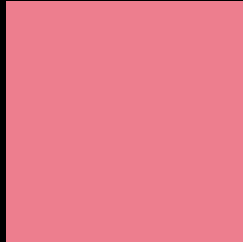
Large Text (above 18pt) WCAG AA × Fail

Any Text WCAG AA × Fail

Large Text (above 18pt) WCAG AAA × Fail

Any Text WCAG AAA × Fail

Black Background



This preview shows how the RYB color 237, 126, 142 looks on a black background.

Color Contrast Check

Large Text (above 18pt) WCAG AA ✓ Pass

Any Text WCAG AA ✓ Pass

Large Text (above 18pt) WCAG AAA ✓ Pass

Any Text WCAG AAA ✓ Pass

If you want to check with other color combinations, try the [Color Contrast Checker](#).

RYB 237, 126, 142 Background



This preview shows how black text looks on a background with the RYB color 237, 126, 142.

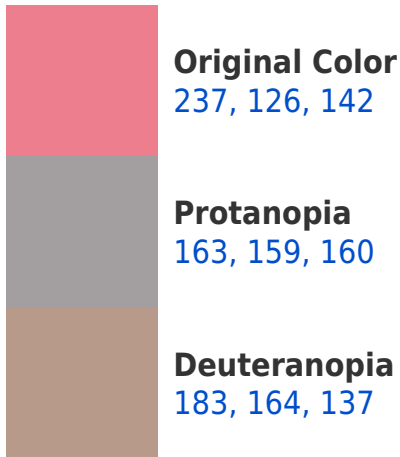


This preview shows how white text looks on a background with the RYB color 237, 126, 142.

Color Blindness Simulation

Color vision deficiency is a very complex topic, and I could not describe the different causes any better than Wikipedia does, so if you want to learn more, you should check out their [article about color blindness](#).

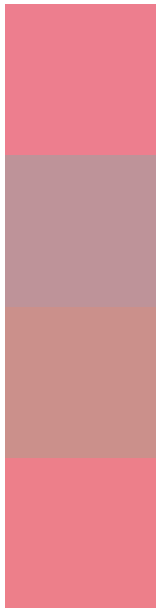
Dichromacy





Tritanopia
237, 127, 136

Trichromacy



Original Color
237, 126, 142

Protanomaly
190, 147, 153

Deuteranomaly
203, 144, 139

Tritanomaly
237, 127, 138

Monochromacy



Original Color
237, 126, 142

Achromatopsia
161, 161, 161

Achromatomaly
189, 148, 154

CSS Examples

Text

The CSS property to change the color of the text to RYB 237, 126, 142 is called "color". The color property can be set on classes, ids or directly on the HTML element.

This example shows how text in the color rgb(237, 126, 142) looks like.

```
.text, #text, p{  
    color:rgb(237, 126, 142)  
}
```

If you want to add a text shadow in that color use the text-shadow property, you can generate a text shadow directly with our [CSS Text Shadow Generator](#).

Here you see how black text with a 4 pixel rgb(237, 126, 142) colored shadow looks like.

```
.shadow{ text-shadow: 4px 4px 2px rgb(237, 126, 142) }
```

Border

The CSS property to change the border of an element to RYB 237, 126, 142 is called "border". The border property can be set on classes, ids or directly on the HTML element.

This example shows the color as border, it can be applied via the CSS property "border" or "border-color".

```
.border, #border, table{ border:4px solid rgb(237, 126, 142) }
```

If only the border color should be changed use the property `border-color`.

```
.border{ border-color:rgb(237, 126, 142) }
```

If you want to add a box shadow in that color use:

Here you see how a box with a 4 pixel `rgb(237, 126, 142)` colored shadow looks like.

```
.boxshadow{ -moz-box-shadow:4px 4px 4px 4px rgb(237, 126, 142); -webkit-box-shadow:4px 4px 4px 4px rgb(237, 126, 142); box-shadow:4px 4px 4px 4px rgb(237, 126, 142) }
```

Background

The CSS property to change the background color of an element to RYB 237, 126, 142 is called "background". The background property can be set on classes, ids or directly on the HTML element.

```
.background, #background, body{  
background: rgb(237, 126, 142) }
```

If only the background color should be changed can be used:

```
.background{ background-color: rgb(237,  
126, 142) }
```

This example shows the color as background, it is applied via the CSS property "background".

To optimize and compress your CSS code, you can use our [online CSS compressor and optimizer](#) based on csstidy. If you want to create a linear or radial gradient as background or border, check our [CSS Gradient Generator](#).

Hey! You found this booklet interesting? Support Converting Colors with the new Membership Option!

The pro membership hides all ads, plus gives you double the colors in the color bucket, and more awesome pro features!

[Learn more, Memberships starting at \\$2.50/m!](#)

**Follow me
on Twitter!**

@ConvertingColor