

# Converting Colors

`RYB(238, 157, 187)`

Have a look what the booklet for  
RYB(238, 157, 187) contains.

<b>RYB(238, 157, 187)</b> .....	3
<i><b>Conversions</b></i> .....	4
<i><b>Details</b></i> .....	6
<i><b>Harmonies</b></i> .....	11
<i><b>Previews</b></i> .....	23
<i><b>Color Blindness Simulation</b></i> .....	26
<i><b>CSS Examples</b></i> .....	29

# Color

**R<sub>Y</sub>B(238, 157, 187)**

# Conversions

## Conversions Part 1

Format	Color
Hex	EE9DBB
RGB	238, 157, 187
RGB Percent	93%, 62%, 73%
CMY	0.0667, 0.3843, 0.2667
CMYK	0.00, 0.34, 0.21, 0.07
HSL	338°, 70%, 77%
HSV	338°, 34%, 93%
XYZ	56.2865, 45.8789, 52.9026
YIQ	184.6390, 38.6460, 26.5020

# Conversions

## Conversions Part 2

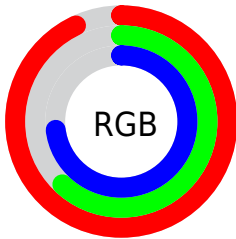
Format	Color
R <sub>Y</sub> B	238, 157, 187
Decimal	15637947
CIE Lab	73.47, 34.25, -2.98
CIE LCh	73, 34.376, 355.032
Yxy	45.8789, 0.3630, 0.2959
Android (android.graphics.Color)	4293828027 (0xFFEE9DBB)
YUV	184.6390, 1.1640, 46.7976
Hunter-Lab	67.7340, 29.7978, 1.1062

# Details

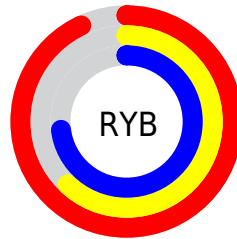
The RYB color **238, 157, 187** is a light color, and the websafe version is hex **FF99CC**. A complement of this color would be **157, 207, 238**, and the grayscale version is **185, 185, 185**.

A 20% lighter version of the original color is **255, 212, 243**, and **181, 104, 134** is the 20% darker color. If you saturate the color by 10%, you get **238, 133, 172**, and if you desaturate by 10%, it is **238, 181, 202**.

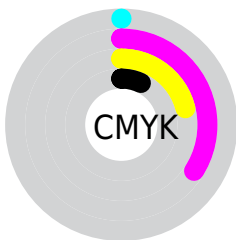
# Distribution



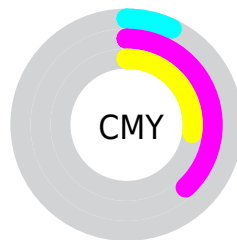
- Red (93%)
- Green (62%)
- Blue (73%)



- Red (93%)
- Yellow (62%)
- Blue (73%)



- Cyan (0%)
- Magenta (34%)
- Yellow (21%)
- Black (7%)



- Cyan (7%)
- Magenta (38%)
- Yellow (27%)

# Brightness & Saturation Gradients

These gradients show how the RYB color 238, 157, 187 changes by changing the brightness by 10 percent. The first figure shows a shift by +10% for each color and the second figure -10%.

Similar to the brightness gradients but the following saturation gradients show a change of the RYB color 238, 157, 187 by changing the saturation by 10% instead.




 238, 157, 187

 238, 157, 187


255, 255, 255

 209, 130, 160

 255, 212, 243

 181, 104, 134

 255, 241, 255

 153, 79, 109

 126, 55, 84

 99, 30, 61

 74, 2, 40

 50, 0, 19

 15, 0, 0

 0, 0, 0

■ 238, 157, 187

■ 238, 157, 187

■ 238, 133, 172

■ 238, 181, 202

■ 238, 109, 157

■ 238, 205, 217

■ 238, 86, 142

■ 238, 228, 232

■ 238, 62, 127

■ 238, 247, 252

■ 238, 38, 112

■ 238, 247, 255

■ 238, 14, 97

■ 238, 0, 88

# Harmonies

## Analogous

The Analogous color harmony consists of three colors that are next to each other on the color wheel.



216, 163, 217



238, 157, 187



243, 158, 155

# Triad

The Triadic color harmony groups three colors that are evenly spaced from another and form a triangle on the color wheel.



238, 157, 187



123, 187, 135



85, 147, 231

# Complementary

The Complementary color scheme is a pair of colors which are on the opposite of each other on the color wheel.



238, 157, 187



157, 207, 238

# Split Complementary

Split-complementary colors differ from the complementary color scheme. The scheme consists of three colors, the original color and two neighbors of the complement color.



73, 137, 206



238, 157, 187



138, 189, 194

# Square

The Square scheme is like the rectangle color scheme, but the four colors are evenly spaced on the color wheel.



238, 157, 187



163, 207, 118



101, 156, 197



129, 167, 243

# Rectangle

The Rectangle color scheme consists of four colors that form a rectangle on the color wheel.



238, 157, 187



237, 172, 137



101, 156, 197



75, 141, 224



# Sweetspot

The Sweet Spot groups the original color and five complimentary colors.



238, 157, 187



255, 230, 239



207, 157, 238



128, 112, 118



0, 0, 0



128, 128, 128



# Same Dimension

The Same Dimension uses a secret algorithm to generate beautiful new colors.



238, 157, 187



255, 150, 189



238, 167, 157



120, 108, 112



184, 0, 68



56, 0, 21



# Inverse Universe

The Inverse Universe completely reimagines the original color for something new.



238, 157, 187



255, 150, 189



157, 195, 238



120, 108, 112



184, 0, 68



56, 0, 21



# Previews

## White Background



This preview shows how the RYB color 238, 157, 187 looks on a white background.

## Color Contrast Check

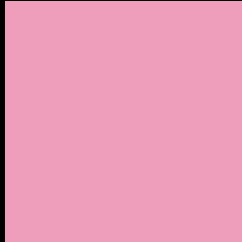
Large Text (above 18pt) WCAG AA × Fail

Any Text WCAG AA × Fail

Large Text (above 18pt) WCAG AAA × Fail

Any Text WCAG AAA × Fail

# Black Background



This preview shows how the RYB color 238, 157, 187 looks on a black background.

## Color Contrast Check

Large Text (above 18pt) WCAG AA ✓ Pass

Any Text WCAG AA ✓ Pass

Large Text (above 18pt) WCAG AAA ✓ Pass

Any Text WCAG AAA ✓ Pass

If you want to check with other color combinations, try the [Color Contrast Checker](#).



## **RYB 238, 157, 187 Background**



This preview shows how black text looks on a background with the RYB color 238, 157, 187.



This preview shows how white text looks on a background with the RYB color 238, 157, 187.

# Color Blindness Simulation

Color vision deficiency is a very complex topic, and I could not describe the different causes any better than Wikipedia does, so if you want to learn more, you should check out their [article about color blindness](#).


## Dichromacy



**Original Color**  
238, 157, 187

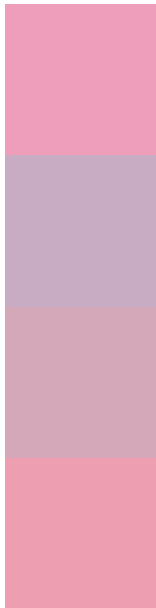
**Protanopia**  
178, 180, 201

**Deuteranopia**  
197, 175, 184



**Tritanopia**  
236, 160, 172

# Trichromacy



**Original Color**  
238, 157, 187

**Protanomaly**  
200, 172, 196

**Deuteranomaly**  
212, 168, 185

**Tritanomaly**  
237, 159, 177

# Monochromacy



**Original Color**  
238, 157, 187

**Achromatopsia**  
185, 185, 185

**Achromatomaly**  
204, 175, 186

# CSS Examples

## Text

The CSS property to change the color of the text to RYB 238, 157, 187 is called "color". The color property can be set on classes, ids or directly on the HTML element.

This example shows how text in the color rgb(238, 157, 187) looks like.

```
.text, #text, p{  
    color:rgb(238, 157, 187)  
}
```

If you want to add a text shadow in that color use the text-shadow property, you can generate a text shadow directly with our [CSS Text Shadow Generator](#).

Here you see how black text with a 4 pixel rgb(238, 157, 187) colored shadow looks like.

```
.shadow{ text-shadow: 4px 4px 2px rgb(238, 157, 187) }
```

## Border

The CSS property to change the border of an element to RYB 238, 157, 187 is called "border". The border property can be set on classes, ids or directly on the HTML element.

This example shows the color as border, it can be applied via the CSS property "border" or "border-color".

```
.border, #border, table{ border:4px solid rgb(238, 157, 187) }
```

If only the border color should be changed use the property `border-color`.

```
.border{ border-color:rgb(238, 157, 187) }
```

If you want to add a box shadow in that color use:

Here you see how a box with a 4 pixel `rgb(238, 157, 187)` colored shadow looks like.

```
.boxshadow{ -moz-box-shadow:4px 4px 4px  
4px rgb(238, 157, 187); -webkit-box-  
shadow:4px 4px 4px 4px rgb(238, 157, 187);  
box-shadow:4px 4px 4px 4px rgb(238, 157,  
187) }
```

# Background

The CSS property to change the background color of an element to RYB 238, 157, 187 is called "background". The background property can be set on classes, ids or directly on the HTML element.

```
.background, #background, body{  
background: rgb(238, 157, 187) }
```

If only the background color should be changed can be used:

```
.background{ background-color: rgb(238,  
157, 187) }
```

This example shows the color as background, it is applied via the CSS property "background".

To optimize and compress your CSS code, you can use our [online CSS compressor and optimizer](#) based on csstidy. If you want to create a linear or radial gradient as background or border, check our [CSS Gradient Generator](#).



Hey! You found this booklet interesting? Support Converting Colors with the new Membership Option!

The pro membership hides all ads, plus gives you double the colors in the color bucket, and more awesome pro features!

**[Learn more, Memberships starting at \\$2.50/m!](#)**

**Follow me  
on Twitter!**

@ConvertingColor