

Converting Colors

`RYB(238, 217, 201)`

Have a look what the booklet for
RYB(238, 217, 201) contains.

RYB(238, 217, 201)	3
<i>Conversions</i>	4
<i>Details</i>	6
<i>Harmonies</i>	11
<i>Previews</i>	23
<i>Color Blindness Simulation</i>	26
<i>CSS Examples</i>	29

Color

R_YB(238, 217, 201)

Conversions

Conversions Part 1

Format	Color
Hex	EED4C9
RGB	238, 212, 201
RGB Percent	93%, 83%, 79%
CMY	0.0667, 0.1680, 0.2118
CMYK	0.00, 0.11, 0.16, 0.07
HSL	18°, 52%, 86%
HSV	18°, 16%, 93%
XYZ	69.3885, 69.5661, 65.0288
YIQ	218.5200, 19.0270, 2.0910

Conversions

Conversions Part 2

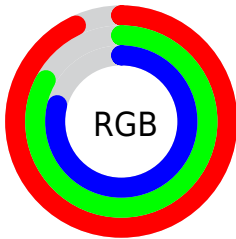
Format	Color
R _Y B	238, 217, 201
Decimal	15652041
CIE Lab	86.78, 7.18, 8.79
CIE LCh	87, 11.348, 50.737
Yxy	69.5661, 0.3402, 0.3410
Android (android.graphics.Color)	4293842121 (0xFFEED4C9)
YUV	218.5200, -8.6374, 17.0840
Hunter-Lab	83.4063, 2.5391, 12.1582

Details

The RYB color **238, 217, 201** is a light color, and the websafe version is hex **FFCCCC**. A complement of this color would be **201, 216, 238**, and the grayscale version is **219, 219, 219**.

A 20% lighter version of the original color is 255, 255, 255, and **182, 161, 147** is the 20% darker color. If you saturate the color by 10%, you get **238, 205, 177**, and if you desaturate by 10%, it is **238, 231, 225**.

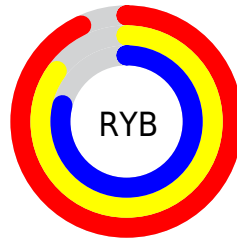
Distribution



Red (93%)

Green (83%)

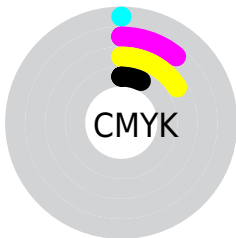
Blue (79%)



Red (93%)

Yellow (85%)

Blue (79%)

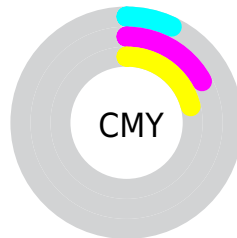


Cyan (0%)

Magenta (11%)

Yellow (16%)

Black (7%)



Cyan (7%)

Magenta (17%)

Yellow (21%)

Brightness & Saturation Gradients

These gradients show how the RYB color 238, 217, 201 changes by changing the brightness by 10 percent. The first figure shows a shift by +10% for each color and the second figure -10%.

Similar to the brightness gradients but the following saturation gradients show a change of the RYB color 238, 217, 201 by changing the saturation by 10% instead.

■ 238, 217, 201

255, 255, 255

■ 238, 217, 201

■ 210, 190, 174

■ 182, 163, 147

■ 155, 137, 121

■ 129, 110, 97

■ 103, 86, 73

■ 79, 63, 50

■ 55, 41, 29

■ 34, 27, 4

■ 0, 0, 0

 238, 217, 201


 238, 217, 201

 238, 205, 177

 238, 231, 225


 238, 190, 153


 238, 242, 249


 238, 175, 130


 238, 247, 255

 238, 163, 106

 238, 149, 82

 238, 135, 58

 238, 123, 34

 238, 108, 11

 238, 103, 0

Harmonies

Analogous

The Analogous color harmony consists of three colors that are next to each other on the color wheel.



241, 210, 210



238, 217, 201



223, 230, 196

Triad

The Triadic color harmony groups three colors that are evenly spaced from another and form a triangle on the color wheel.



238, 217, 201



195, 213, 224



215, 216, 237

Complementary

The Complementary color scheme is a pair of colors which are on the opposite of each other on the color wheel.



238, 217, 201



201, 216, 238

Split Complementary

Split-complementary colors differ from the complementary color scheme. The scheme consists of three colors, the original color and two neighbors of the complement color.



202, 214, 238



238, 217, 201



191, 208, 224

Square

The Square scheme is like the rectangle color scheme, but the four colors are evenly spaced on the color wheel.



238, 217, 201



203, 222, 219



193, 210, 234



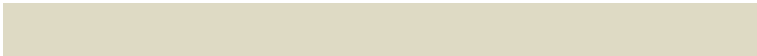
228, 212, 231

Rectangle

The Rectangle color scheme consists of four colors that form a rectangle on the color wheel.



238, 217, 201



201, 222, 196



193, 210, 234



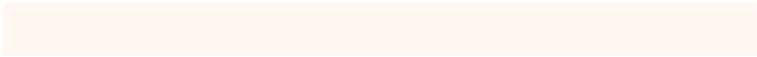
211, 216, 238

Sweetspot

The Sweet Spot groups the original color and five complimentary colors.



238, 217, 201



255, 248, 242



238, 201, 227



128, 123, 120



0, 0, 0



128, 128, 128

Same Dimension

The Same Dimension uses a secret algorithm to generate beautiful new colors.



238, 217, 201



255, 227, 207



210, 238, 201



120, 112, 108



184, 78, 0



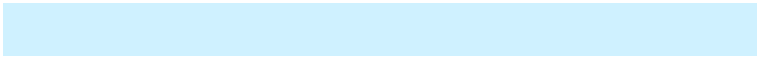
56, 24, 0

Inverse Universe

The Inverse Universe completely reimagines the original color for something new.



201, 216, 238



207, 227, 255



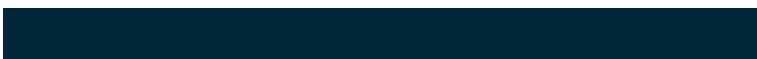
201, 207, 238



108, 113, 120



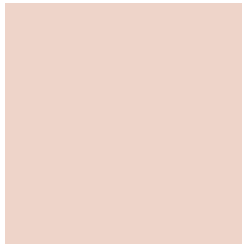
0, 75, 184



0, 23, 56

Previews

White Background



This preview shows how the RYB color 238, 217, 201 looks on a white background.

Color Contrast Check

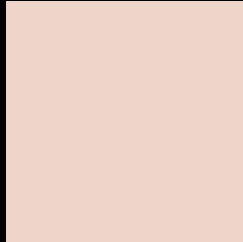
Large Text (above 18pt) WCAG AA × Fail

Any Text WCAG AA × Fail

Large Text (above 18pt) WCAG AAA × Fail

Any Text WCAG AAA × Fail

Black Background



This preview shows how the RYB color 238, 217, 201 looks on a black background.

Color Contrast Check

Large Text (above 18pt) WCAG AA ✓ Pass

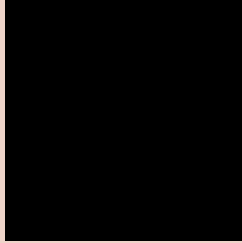
Any Text WCAG AA ✓ Pass

Large Text (above 18pt) WCAG AAA ✓ Pass

Any Text WCAG AAA ✓ Pass

If you want to check with other color combinations, try the [Color Contrast Checker](#).

RYB 238, 217, 201 Background



This preview shows how black text looks on a background with the RYB color 238, 217, 201.



This preview shows how white text looks on a background with the RYB color 238, 217, 201.

Color Blindness Simulation

Color vision deficiency is a very complex topic, and I could not describe the different causes any better than Wikipedia does, so if you want to learn more, you should check out their [article about color blindness](#).

Dichromacy

	Original Color 238, 217, 201
	Protanopia 216, 225, 203
	Deuteranopia 244, 212, 201



Tritanopia
241, 209, 225

Trichromacy



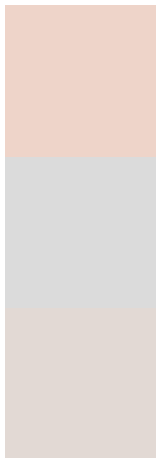
Original Color
238, 217, 201

Protanomaly
230, 226, 202

Deuteranomaly
242, 214, 201

Tritanomaly
240, 210, 216

Monochromacy



Original Color
238, 217, 201

Achromatopsia
219, 219, 219

Achromatomaly
226, 220, 212

CSS Examples

Text

The CSS property to change the color of the text to RYB 238, 217, 201 is called "color". The color property can be set on classes, ids or directly on the HTML element.

This example shows how text in the color rgb(238, 212, 201) looks like.

```
.text, #text, p{  
    color:rgb(238, 212, 201)  
}
```

If you want to add a text shadow in that color use the text-shadow property, you can generate a text shadow directly with our [CSS Text Shadow Generator](#).

Here you see how black text with a 4 pixel rgb(238, 212, 201) colored shadow looks like.

```
.shadow{ text-shadow: 4px 4px 2px rgb(238, 212, 201) }
```

Border

The CSS property to change the border of an element to RYB 238, 217, 201 is called "border". The border property can be set on classes, ids or directly on the HTML element.

This example shows the color as border, it can be applied via the CSS property "border" or "border-color".

```
.border, #border, table{ border:4px solid rgb(238, 212, 201) }
```

If only the border color should be changed use the property `border-color`.

```
.border{ border-color:rgb(238, 212, 201) }
```

If you want to add a box shadow in that color use:

Here you see how a box with a 4 pixel `rgb(238, 212, 201)` colored shadow looks like.

```
.boxshadow{ -moz-box-shadow:4px 4px 4px  
4px rgb(238, 212, 201); -webkit-box-  
shadow:4px 4px 4px 4px rgb(238, 212, 201);  
box-shadow:4px 4px 4px 4px rgb(238, 212,  
201) }
```

Background

The CSS property to change the background color of an element to RYB 238, 217, 201 is called "background". The background property can be set on classes, ids or directly on the HTML element.

```
.background, #background, body{  
background: rgb(238, 212, 201) }
```

If only the background color should be changed can be used:

```
.background{ background-color: rgb(238,  
212, 201) }
```

This example shows the color as background, it is applied via the CSS property "background".

To optimize and compress your CSS code, you can use our [online CSS compressor and optimizer](#) based on csstidy. If you want to create a linear or radial gradient as background or border, check our [CSS Gradient Generator](#).

Hey! You found this booklet interesting? Support Converting Colors with the new Membership Option!

The pro membership hides all ads, plus gives you double the colors in the color bucket, and more awesome pro features!

[Learn more, Memberships starting at \\$2.50/m!](#)

**Follow me
on Twitter!**

@ConvertingColor