

Converting Colors

`RYB(238, 224, 194)`

Have a look what the booklet for
RYB(238, 224, 194) contains.

RYB(238, 224, 194)	3
<i>Conversions</i>	4
<i>Details</i>	6
<i>Harmonies</i>	11
<i>Previews</i>	23
<i>Color Blindness Simulation</i>	26
<i>CSS Examples</i>	29

Color

R_YB(238, 224, 194)

Conversions

Conversions Part 1

Format	Color
Hex	EED4C2
RGB	238, 212, 194
RGB Percent	93%, 83%, 76%
CMY	0.0667, 0.1693, 0.2392
CMYK	0.00, 0.11, 0.18, 0.07
HSL	24°, 56%, 85%
HSV	24°, 18%, 93%
XYZ	68.5005, 69.0781, 60.7620
YIQ	217.7220, 21.2740, -0.0860

Conversions

Conversions Part 2

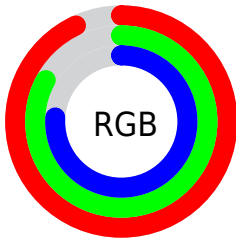
Format	Color
RYB	238, 224, 194
Decimal	15652034
CIELab	86.54, 6.29, 12.14
CIELCh	87, 13.672, 62.601
Yxy	69.0781, 0.3454, 0.3483
Android (android.graphics.Color)	4293842114 (0xFFEED4C2)
YUV	217.7220, -11.6949, 17.7838
Hunter-Lab	83.1132, 1.6684, 14.8339

Details

The RYB color **238, 224, 194** is a light color, and the websafe version is hex **FFCCCC**. A complement of this color would be **194, 210, 238**, and the grayscale version is **218, 218, 218**.

A 20% lighter version of the original color is **251, 255, 251**, and **182, 169, 140** is the 20% darker color. If you saturate the color by 10%, you get **238, 218, 170**, and if you desaturate by 10%, it is **238, 231, 218**.

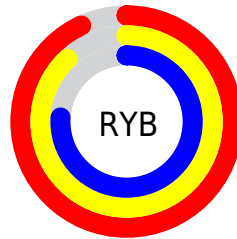
Distribution



Red (93%)

Green (83%)

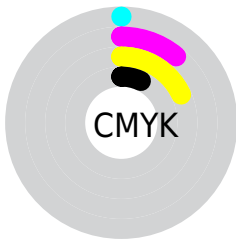
Blue (76%)



Red (93%)

Yellow (88%)

Blue (76%)

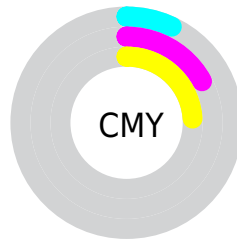


Cyan (0%)

Magenta (11%)

Yellow (18%)

Black (7%)



Cyan (7%)

Magenta (17%)

Yellow (24%)

Brightness & Saturation Gradients

These gradients show how the RYB color 238, 224, 194 changes by changing the brightness by 10 percent. The first figure shows a shift by +10% for each color and the second figure -10%.


Similar to the brightness gradients but the following saturation gradients show a change of the RYB color 238, 224, 194 by changing the saturation by 10% instead.


 238, 224, 194

255, 255, 255


 250, 255, 250

 238, 224, 194

 210, 195, 167

 182, 169, 140

 155, 142, 115

 128, 118, 90

 103, 93, 67

 78, 69, 45

 55, 46, 24

 34, 34, 0

 0, 0, 0

 238, 224, 194

 238, 224, 194

 238, 218, 170


 238, 231, 218

 238, 211, 146


 238, 239, 242


 238, 200, 123


 238, 246, 255

 238, 193, 99

 238, 247, 255

 238, 186, 75

 238, 179, 51

 238, 172, 27

 238, 164, 4

 238, 161, 0

Harmonies

Analogous

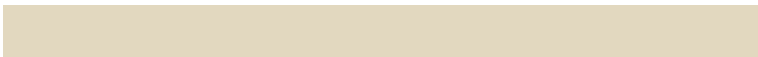
The Analogous color harmony consists of three colors that are next to each other on the color wheel.



244, 210, 203



238, 224, 194



205, 226, 191

Triad

The Triadic color harmony groups three colors that are evenly spaced from another and form a triangle on the color wheel.



238, 224, 194



187, 207, 224



221, 213, 238

Complementary

The Complementary color scheme is a pair of colors which are on the opposite of each other on the color wheel.



238, 224, 194



194, 210, 238

Split Complementary

Split-complementary colors differ from the complementary color scheme. The scheme consists of three colors, the original color and two neighbors of the complement color.



204, 214, 242



238, 224, 194



184, 205, 230

Square

The Square scheme is like the rectangle color scheme, but the four colors are evenly spaced on the color wheel.



238, 224, 194



197, 217, 223



191, 209, 239



235, 209, 229

Rectangle

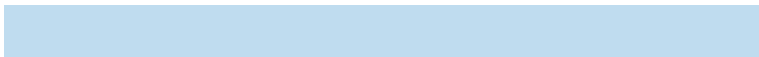
The Rectangle color scheme consists of four colors that form a rectangle on the color wheel.



238, 224, 194



193, 219, 195



191, 209, 239



215, 214, 240

Sweetspot

The Sweet Spot groups the original color and five complimentary colors.



238, 224, 194



255, 250, 240



238, 194, 220



128, 124, 119



0, 0, 0



128, 128, 128

Same Dimension

The Same Dimension uses a secret algorithm to generate beautiful new colors.



238, 224, 194



255, 238, 199



198, 238, 194



120, 117, 108



184, 124, 0



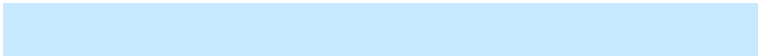
56, 39, 0

Inverse Universe

The Inverse Universe completely reimagines the original color for something new.



194, 210, 238



199, 220, 255



194, 198, 238



108, 112, 120



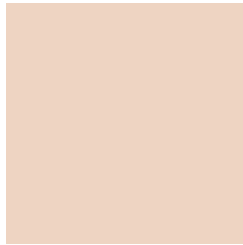
0, 68, 184



0, 21, 56

Previews

White Background



This preview shows how the RYB color 238, 224, 194 looks on a white background.

Color Contrast Check

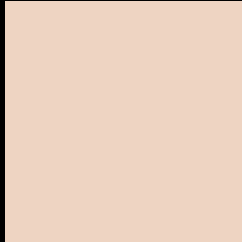
Large Text (above 18pt) WCAG AA × Fail

Any Text WCAG AA × Fail

Large Text (above 18pt) WCAG AAA × Fail

Any Text WCAG AAA × Fail

Black Background



This preview shows how the RYB color 238, 224, 194 looks on a black background.

Color Contrast Check

Large Text (above 18pt) WCAG AA ✓ Pass

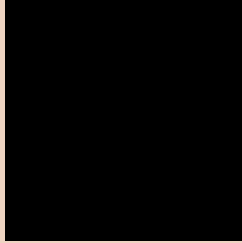
Any Text WCAG AA ✓ Pass

Large Text (above 18pt) WCAG AAA ✓ Pass

Any Text WCAG AAA ✓ Pass

If you want to check with other color combinations, try the [Color Contrast Checker](#).

RYB 238, 224, 194 Background



This preview shows how black text looks on a background with the RYB color 238, 224, 194.



This preview shows how white text looks on a background with the RYB color 238, 224, 194.

Color Blindness Simulation

Color vision deficiency is a very complex topic, and I could not describe the different causes any better than Wikipedia does, so if you want to learn more, you should check out their [article about color blindness](#).

Dichromacy





Tritanopia
242, 207, 224

Trichromacy



Original Color

238, 224, 194

Protanomaly

224, 230, 195

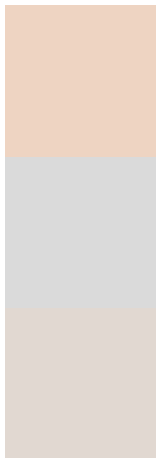
Deuteranomaly

243, 217, 195

Tritanomaly

241, 209, 213

Monochromacy



Original Color

238, 224, 194

Achromatopsia

218, 218, 218

Achromatomaly

225, 221, 209

CSS Examples

Text

The CSS property to change the color of the text to RGB 238, 224, 194 is called "color". The color property can be set on classes, ids or directly on the HTML element.

This example shows how text in the color rgb(238, 212, 194) looks like.

```
.text, #text, p{  
    color:rgb(238, 212, 194)  
}
```

If you want to add a text shadow in that color use the text-shadow property, you can generate a text shadow directly with our [CSS Text Shadow Generator](#).

Here you see how black text with a 4 pixel rgb(238, 212, 194) colored shadow looks like.

```
.shadow{ text-shadow: 4px 4px 2px rgb(238, 212, 194) }
```

Border

The CSS property to change the border of an element to RYB 238, 224, 194 is called "border". The border property can be set on classes, ids or directly on the HTML element.

This example shows the color as border, it can be applied via the CSS property "border" or "border-color".

```
.border, #border, table{ border:4px solid rgb(238, 212, 194) }
```

If only the border color should be changed use the property `border-color`.

```
.border{ border-color:rgb(238, 212, 194) }
```

If you want to add a box shadow in that color use:

Here you see how a box with a 4 pixel `rgb(238, 212, 194)` colored shadow looks like.

```
.boxshadow{ -moz-box-shadow:4px 4px 4px  
4px rgb(238, 212, 194); -webkit-box-  
shadow:4px 4px 4px 4px rgb(238, 212, 194);  
box-shadow:4px 4px 4px 4px rgb(238, 212,  
194) }
```

Background

The CSS property to change the background color of an element to RYB 238, 224, 194 is called "background". The background property can be set on classes, ids or directly on the HTML element.

```
.background, #background, body{  
background: rgb(238, 212, 194) }
```

If only the background color should be changed can be used:

```
.background{ background-color: rgb(238,  
212, 194) }
```

This example shows the color as background, it is applied via the CSS property "background".

To optimize and compress your CSS code, you can use our [online CSS compressor and optimizer](#) based on csstidy. If you want to create a linear or radial gradient as background or border, check our [CSS Gradient Generator](#).

Hey! You found this booklet interesting? Support Converting Colors with the new Membership Option!

The pro membership hides all ads, plus gives you double the colors in the color bucket, and more awesome pro features!

[Learn more, Memberships starting at \\$2.50/m!](#)

**Follow me
on Twitter!**

@ConvertingColor