

Converting Colors

`RYB(239, 198, 173)`

Have a look what the booklet for
RYB(239, 198, 173) contains.

RYB(239, 198, 173)	3
<i>Conversions</i>	4
<i>Details</i>	6
<i>Harmonies</i>	11
<i>Previews</i>	23
<i>Color Blindness Simulation</i>	26
<i>CSS Examples</i>	29

Color

R_YB(239, 198, 173)

Conversions

Conversions Part 1

Format	Color
Hex	E9BFAD
RGB	239, 191, 173
RGB Percent	94%, 75%, 68%
CMY	0.0627, 0.2505, 0.3216
CMYK	0.00, 0.20, 0.28, 0.06
HSL	16°, 67%, 81%
HSV	16°, 28%, 94%
XYZ	61.7990, 58.6870, 47.6057
YIQ	203.3000, 34.3860, 4.5780

Conversions

Conversions Part 2

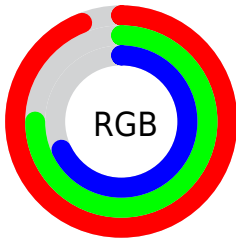
Format	Color
R _Y B	239, 198, 173
Decimal	15712173
CIE Lab	81.12, 14.55, 15.65
CIE LCh	81, 21.366, 47.095
Yxy	58.6870, 0.3677, 0.3491
Android (android.graphics.Color)	4293902253 (0xFFEFBFAD)
YUV	203.3000, -14.9379, 31.3089
Hunter-Lab	76.6074, 9.9324, 16.7810

Details

The RYB color **239, 198, 173** is a light color, and the websafe version is hex **FFCCCC**. A complement of this color would be **173, 201, 239**, and the grayscale version is **203, 203, 203**.

A 20% lighter version of the original color is **239, 255, 228**, and **182, 143, 121** is the 20% darker color. If you saturate the color by 10%, you get **239, 184, 149**, and if you desaturate by 10%, it is **239, 212, 197**.

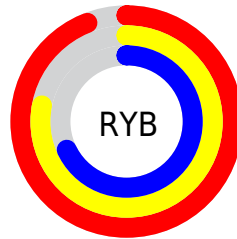
Distribution



Red (94%)

Green (75%)

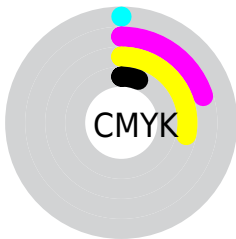
Blue (68%)



Red (94%)

Yellow (78%)

Blue (68%)

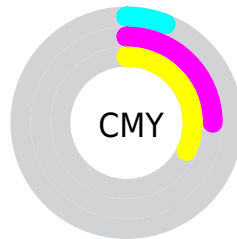


Cyan (0%)

Magenta (20%)

Yellow (28%)

Black (6%)



Cyan (6%)

Magenta (25%)

Yellow (32%)

Brightness & Saturation Gradients

These gradients show how the RYB color 239, 198, 173 changes by changing the brightness by 10 percent. The first figure shows a shift by +10% for each color and the second figure -10%.


Similar to the brightness gradients but the following saturation gradients show a change of the RYB color 239, 198, 173 by changing the saturation by 10% instead.

 239, 198, 173


255, 255, 255

 237, 255, 228

 239, 198, 173

 210, 171, 146

 182, 145, 121

 155, 118, 96

 128, 94, 72

 102, 70, 49

 76, 48, 28

 53, 31, 3

 31, 0, 0

 0, 0, 0

■ 239, 198, 173

■ 239, 198, 173

■ 239, 184, 149

■ 239, 212, 197

■ 239, 168, 125

■ 239, 228, 221

■ 239, 153, 101

■ 239, 241, 245

■ 239, 139, 77

■ 239, 247, 255

■ 239, 123, 54

■ 239, 108, 30

■ 239, 94, 6

■ 239, 91, 0

Harmonies

Analogous

The Analogous color harmony consists of three colors that are next to each other on the color wheel.



243, 188, 191



239, 198, 173



214, 225, 163

Triad

The Triadic color harmony groups three colors that are evenly spaced from another and form a triangle on the color wheel.



239, 198, 173



161, 193, 212



194, 199, 239

Complementary

The Complementary color scheme is a pair of colors which are on the opposite of each other on the color wheel.



239, 198, 173



173, 201, 239

Split Complementary

Split-complementary colors differ from the complementary color scheme. The scheme consists of three colors, the original color and two neighbors of the complement color.



168, 193, 240



239, 198, 173



148, 181, 213

Square

The Square scheme is like the rectangle color scheme, but the four colors are evenly spaced on the color wheel.



239, 198, 173



174, 209, 201



150, 185, 230



219, 193, 229

Rectangle

The Rectangle color scheme consists of four colors that form a rectangle on the color wheel.



239, 198, 173



175, 212, 162



150, 185, 230



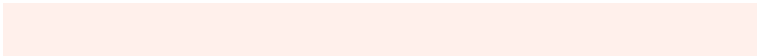
185, 198, 241

Sweetspot

The Sweet Spot groups the original color and five complimentary colors.



239, 198, 173



255, 242, 235



239, 173, 221



128, 119, 115



0, 0, 0



128, 128, 128

Same Dimension

The Same Dimension uses a secret algorithm to generate beautiful new colors.



239, 198, 173



255, 203, 171



192, 239, 173



120, 112, 108



184, 69, 0



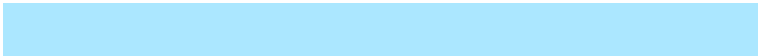
56, 20, 0

Inverse Universe

The Inverse Universe completely reimagines the original color for something new.



173, 201, 239



171, 206, 255



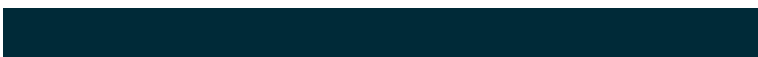
173, 185, 239



108, 113, 120



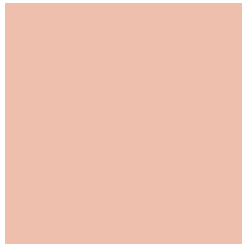
0, 77, 184



0, 24, 56

Previews

White Background



This preview shows how the RYB color 239, 198, 173 looks on a white background.

Color Contrast Check

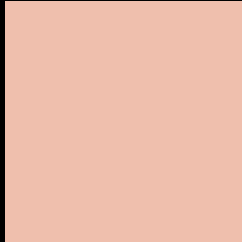
Large Text (above 18pt) WCAG AA × Fail

Any Text WCAG AA × Fail

Large Text (above 18pt) WCAG AAA × Fail

Any Text WCAG AAA × Fail

Black Background



This preview shows how the RYB color 239, 198, 173 looks on a black background.

Color Contrast Check

Large Text (above 18pt) WCAG AA ✓ Pass

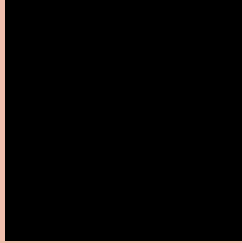
Any Text WCAG AA ✓ Pass

Large Text (above 18pt) WCAG AAA ✓ Pass

Any Text WCAG AAA ✓ Pass

If you want to check with other color combinations, try the [Color Contrast Checker](#).

RYB 239, 198, 173 Background



This preview shows how black text looks on a background with the RYB color 239, 198, 173.







This preview shows how white text looks on a background with the RYB color 239, 198, 173.

Color Blindness Simulation

Color vision deficiency is a very complex topic, and I could not describe the different causes any better than Wikipedia does, so if you want to learn more, you should check out their [article about color blindness](#).

Dichromacy

	Original Color 239, 198, 173
	Protanopia 192, 211, 178
	Deuteranopia 232, 207, 172



Tritanopia
242, 187, 201

Trichromacy



Original Color
239, 198, 173

Protanomaly
221, 215, 176

Deuteranomaly
235, 204, 172

Tritanomaly
241, 189, 191

Monochromacy



Original Color
239, 198, 173

Achromatopsia
203, 203, 203

Achromatomaly
216, 202, 192

CSS Examples

Text

The CSS property to change the color of the text to RYB 239, 198, 173 is called "color". The color property can be set on classes, ids or directly on the HTML element.

This example shows how text in the color `rgb(239, 191, 173)` looks like.

```
.text, #text, p{  
    color:rgb(239, 191, 173)  
}
```

If you want to add a text shadow in that color use the text-shadow property, you can generate a text shadow directly with our [CSS Text Shadow Generator](#).

Here you see how black text with a 4 pixel rgb(239, 191, 173) colored shadow looks like.

```
.shadow{ text-shadow: 4px 4px 2px rgb(239, 191, 173) }
```

Border

The CSS property to change the border of an element to RYB 239, 198, 173 is called "border". The border property can be set on classes, ids or directly on the HTML element.

This example shows the color as border, it can be applied via the CSS property "border" or "border-color".

```
.border, #border, table{ border:4px solid rgb(239, 191, 173) }
```

If only the border color should be changed use the property `border-color`.

```
.border{ border-color:rgb(239, 191, 173) }
```

If you want to add a box shadow in that color use:

Here you see how a box with a 4 pixel `rgb(239, 191, 173)` colored shadow looks like.

```
.boxshadow{ -moz-box-shadow:4px 4px 4px  
4px rgb(239, 191, 173); -webkit-box-  
shadow:4px 4px 4px 4px rgb(239, 191, 173);  
box-shadow:4px 4px 4px 4px rgb(239, 191,  
173) }
```

Background

The CSS property to change the background color of an element to RYB 239, 198, 173 is called "background". The background property can be set on classes, ids or directly on the HTML element.

```
.background, #background, body{  
background: rgb(239, 191, 173) }
```

If only the background color should be changed can be used:

```
.background{ background-color: rgb(239,  
191, 173) }
```

This example shows the color as background, it is applied via the CSS property "background".

To optimize and compress your CSS code, you can use our [online CSS compressor and optimizer](#) based on csstidy. If you want to create a linear or radial gradient as background or border, check our [CSS Gradient Generator](#).

Hey! You found this booklet interesting? Support Converting Colors with the new Membership Option!

The pro membership hides all ads, plus gives you double the colors in the color bucket, and more awesome pro features!

[Learn more, Memberships starting at \\$2.50/m!](#)

**Follow me
on Twitter!**

@ConvertingColor