

Converting Colors

`RYB(241, 225, 221)`

Have a look what the booklet for
RYB(241, 225, 221) contains.

RYB(241, 225, 221)	3
<i>Conversions</i>	4
<i>Details</i>	6
<i>Harmonies</i>	11
<i>Previews</i>	23
<i>Color Blindness Simulation</i>	26
<i>CSS Examples</i>	29

Color

$\text{RYB}(241, 225, 221)$

Conversions

Conversions Part 1

Format	Color
Hex	F1E0DD
RGB	241, 224, 221
RGB Percent	95%, 88%, 87%
CMY	0.0549, 0.1203, 0.1333
CMYK	0.00, 0.07, 0.08, 0.05
HSL	10°, 42%, 91%
HSV	10°, 8%, 95%
XYZ	76.0721, 77.4119, 79.3392
YIQ	228.7410, 11.0950, 2.6710

Conversions

Conversions Part 2

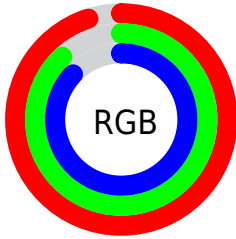
Format	Color
R _Y B	241, 225, 221
Decimal	15851741
CIE Lab	90.51, 5.13, 3.67
CIE LCh	91, 6.306, 35.555
Yxy	77.4119, 0.3267, 0.3325
Android (android.graphics.Color)	4294041821 (0xFFFF1E0DD)
YUV	228.7410, -3.8163, 10.7511
Hunter-Lab	87.9840, 0.3613, 8.1244

Details

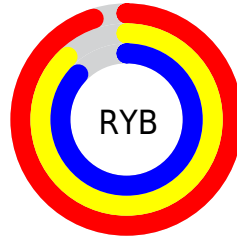
The RYB color **241, 225, 221** is a light color, and the websafe version is hex **CCCCCC**. A complement of this color would be **221, 230, 241**, and the grayscale version is **229, 229, 229**.

A 20% lighter version of the original color is **255, 255, 255**, and **185, 170, 166** is the 20% darker color. If you saturate the color by 10%, you get **241, 205, 197**, and if you desaturate by 10%, it is **241, 243, 245**.

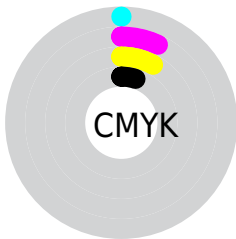
Distribution



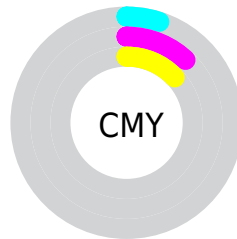
- Red (95%)
- Green (88%)
- Blue (87%)



- Red (95%)
- Yellow (88%)
- Blue (87%)



- Cyan (0%)
- Magenta (7%)
- Yellow (8%)
- Black (5%)




- Cyan (5%)
- Magenta (12%)
- Yellow (13%)


Brightness & Saturation Gradients


These gradients show how the RYB color 241, 225, 221 changes by changing the brightness by 10 percent. The first figure shows a shift by +10% for each color and the second figure -10%.

Similar to the brightness gradients but the following saturation gradients show a change of the RYB color 241, 225, 221 by changing the saturation by 10% instead.


 241, 225, 221


255, 255, 255

 241, 225, 221

 213, 197, 193

 185, 170, 166

 158, 144, 140

 132, 118, 114

 106, 92, 90

 82, 70, 66


 59, 48, 44


 37, 26, 24


 15, 0, 0


 241, 225, 221


 241, 225, 221


 241, 205, 197


 241, 243, 245


 241, 186, 173

 241, 248, 255

 241, 167, 149

 241, 148, 125

 241, 129, 101

 241, 110, 76

 241, 91, 52

 241, 71, 28

 241, 52, 4

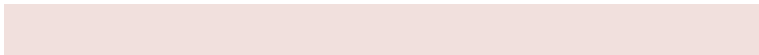
Harmonies

Analogous

The Analogous color harmony consists of three colors that are next to each other on the color wheel.



241, 224, 227



241, 225, 221



238, 233, 217

Triad

The Triadic color harmony groups three colors that are evenly spaced from another and form a triangle on the color wheel.



241, 225, 221



218, 227, 231



223, 227, 240

Complementary

The Complementary color scheme is a pair of colors which are on the opposite of each other on the color wheel.



241, 225, 221



221, 230, 241

Split Complementary

Split-complementary colors differ from the complementary color scheme. The scheme consists of three colors, the original color and two neighbors of the complement color.



217, 225, 239



241, 225, 221



214, 224, 232

Square

The Square scheme is like the rectangle color scheme, but the four colors are evenly spaced on the color wheel.



241, 225, 221



218, 230, 223



214, 223, 235



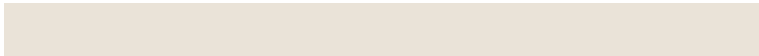
231, 226, 238

Rectangle

The Rectangle color scheme consists of four colors that form a rectangle on the color wheel.



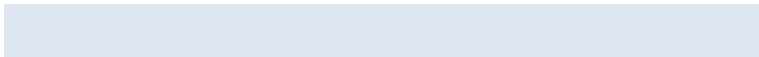
241, 225, 221



227, 234, 216



214, 223, 235



221, 227, 240

Sweetspot

The Sweet Spot groups the original color and five complimentary colors.



241, 225, 221



255, 251, 250



241, 221, 238



128, 125, 125



0, 0, 0



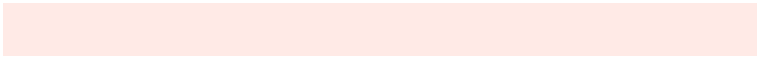
128, 128, 128

Same Dimension

The Same Dimension uses a secret algorithm to generate beautiful new colors.



241, 225, 221



255, 235, 230



232, 241, 221



120, 110, 108



184, 37, 0



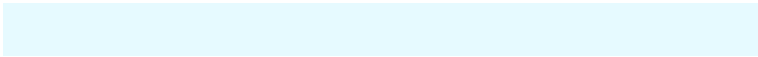
56, 11, 0

Inverse Universe

The Inverse Universe completely reimagines the original color for something new.



221, 230, 241



230, 241, 255



221, 226, 241



108, 113, 120



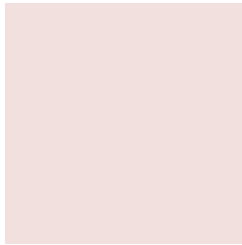
0, 84, 184



0, 26, 56

Previews

White Background



This preview shows how the RYB color 241, 225, 221 looks on a white background.

Color Contrast Check

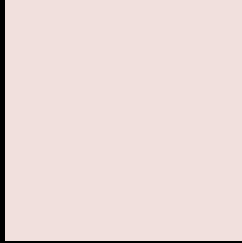
Large Text (above 18pt) WCAG AA × Fail

Any Text WCAG AA × Fail

Large Text (above 18pt) WCAG AAA × Fail

Any Text WCAG AAA × Fail

Black Background



This preview shows how the RYB color 241, 225, 221 looks on a black background.

Color Contrast Check

Large Text (above 18pt) WCAG AA ✓ Pass

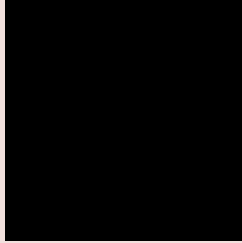
Any Text WCAG AA ✓ Pass

Large Text (above 18pt) WCAG AAA ✓ Pass

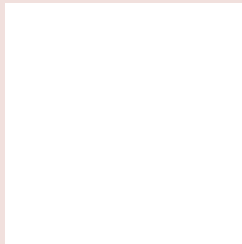
Any Text WCAG AAA ✓ Pass

If you want to check with other color combinations, try the [Color Contrast Checker](#).

RYB 241, 225, 221 Background



This preview shows how black text looks on a background with the RYB color 241, 225, 221.

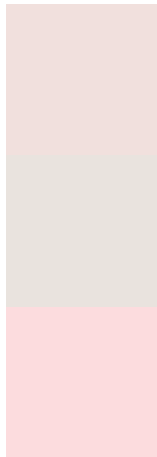


This preview shows how white text looks on a background with the RYB color 241, 225, 221.

Color Blindness Simulation

Color vision deficiency is a very complex topic, and I could not describe the different causes any better than Wikipedia does, so if you want to learn more, you should check out their [article about color blindness](#).

Dichromacy



Original Color
241, 225, 221

Protanopia
233, 231, 222

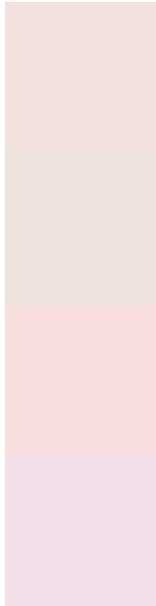
Deuteranopia
252, 220, 222



Tritanopia

244, 222, 239

Trichromacy



Original Color

241, 225, 221

Protanomaly

236, 228, 222

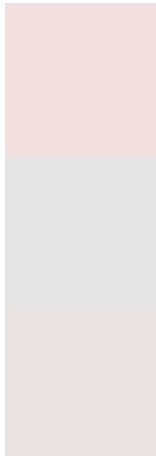
Deuteranomaly

248, 222, 222

Tritanomaly

243, 223, 232

Monochromacy



Original Color

241, 225, 221

Achromatopsia

229, 229, 229

Achromatomaly

233, 227, 226

CSS Examples

Text

The CSS property to change the color of the text to RYB 241, 225, 221 is called "color". The color property can be set on classes, ids or directly on the HTML element.

This example shows how text in the color rgb(241, 224, 221) looks like.

```
.text, #text, p{  
    color:rgb(241, 224, 221)  
}
```

If you want to add a text shadow in that color use the text-shadow property, you can generate a text shadow directly with our [CSS Text Shadow Generator](#).

Here you see how black text with a 4 pixel rgb(241, 224, 221) colored shadow looks like.

```
.shadow{ text-shadow: 4px 4px 2px rgb(241, 224, 221) }
```

Border

The CSS property to change the border of an element to RYB 241, 225, 221 is called "border". The border property can be set on classes, ids or directly on the HTML element.

This example shows the color as border, it can be applied via the CSS property "border" or "border-color".

```
.border, #border, table{ border:4px solid rgb(241, 224, 221) }
```

If only the border color should be changed use the property `border-color`.

```
.border{ border-color:rgb(241, 224, 221) }
```

If you want to add a box shadow in that color use:

Here you see how a box with a 4 pixel `rgb(241, 224, 221)` colored shadow looks like.

```
.boxshadow{ -moz-box-shadow:4px 4px 4px  
4px rgb(241, 224, 221); -webkit-box-  
shadow:4px 4px 4px 4px rgb(241, 224, 221);  
box-shadow:4px 4px 4px 4px rgb(241, 224,  
221) }
```

Background

The CSS property to change the background color of an element to RGB 241, 225, 221 is called "background". The background property can be set on classes, ids or directly on the HTML element.

```
.background, #background, body{  
background: rgb(241, 224, 221) }
```

If only the background color should be changed can be used:

```
.background{ background-color: rgb(241,  
224, 221) }
```

This example shows the color as background, it is applied via the CSS property "background".

To optimize and compress your CSS code, you can use our [online CSS compressor and optimizer](#) based on csstidy. If you want to create a linear or radial gradient as background or border, check our [CSS Gradient Generator](#).

Hey! You found this booklet interesting? Support Converting Colors with the new Membership Option!

The pro membership hides all ads, plus gives you double the colors in the color bucket, and more awesome pro features!

[Learn more, Memberships starting at \\$2.50/m!](#)

**Follow me
on Twitter!**

@ConvertingColor