

Converting Colors

`RYB(245, 181, 158)`

Have a look what the booklet for
RYB(245, 181, 158) contains.

RYB(245, 181, 158)	3
<i>Conversions</i>	4
<i>Details</i>	6
<i>Harmonies</i>	11
<i>Previews</i>	23
<i>Color Blindness Simulation</i>	26
<i>CSS Examples</i>	29

Color

R_YB(245, 181, 158)

Conversions

Conversions Part 1

Format	Color
Hex	F5B09E
RGB	245, 176, 158
RGB Percent	96%, 69%, 62%
CMY	0.0392, 0.3091, 0.3804
CMYK	0.00, 0.28, 0.36, 0.04
HSL	13°, 81%, 79%
HSV	13°, 36%, 96%
XYZ	59.3905, 53.0067, 39.4488
YIQ	194.5790, 46.9020, 9.0300

Conversions

Conversions Part 2

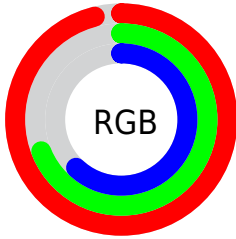
Format	Color
R _Y B	245, 181, 158
Decimal	16101534
CIE Lab	77.88, 22.81, 19.28
CIE LCh	78, 29.868, 40.208
Yxy	53.0067, 0.3911, 0.3491
Android (android.graphics.Color)	4294291614 (0xFFFF5B09E)
YUV	194.5790, -18.0334, 44.2192
Hunter-Lab	72.8057, 18.1997, 18.8384

Details

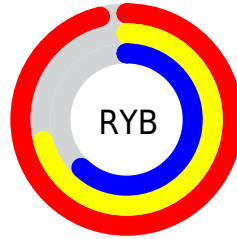
The RYB color **245, 181, 158** is a light color, and the websafe version is hex **FFCCCC**. A complement of this color would be **158, 196, 245**, and the grayscale version is **195, 195, 195**.

A 20% lighter version of the original color is **255, 248, 213**, and **187, 127, 107** is the 20% darker color. If you saturate the color by 10%, you get **245, 163, 134**, and if you desaturate by 10%, it is **245, 199, 183**.

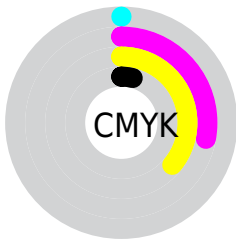
Distribution



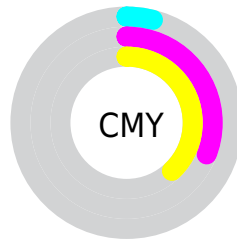
- Red (96%)
- Green (69%)
- Blue (62%)



- Red (96%)
- Yellow (71%)
- Blue (62%)



- Cyan (0%)
- Magenta (28%)
- Yellow (36%)
- Black (4%)



- Cyan (4%)
- Magenta (31%)
- Yellow (38%)

Brightness & Saturation Gradients


These gradients show how the RYB color 245, 181, 158 changes by changing the brightness by 10 percent. The first figure shows a shift by +10% for each color and the second figure -10%.

Similar to the brightness gradients but the following saturation gradients show a change of the RYB color 245, 181, 158 by changing the saturation by 10% instead.


 245, 181, 158

 245, 181, 158

255, 255, 255


 216, 153, 132

 255, 248, 213

 187, 127, 107

 241, 255, 241

 159, 102, 82

 131, 78, 59

 104, 53, 37

 78, 30, 17

 53, 7, 0

 27, 0, 1


 0, 0, 0

 245, 181, 158


 245, 181, 158

 245, 163, 134


 245, 199, 183

 245, 144, 109

 245, 217, 207

 245, 127, 85

 245, 234, 232

 245, 109, 60

 245, 250, 255

 245, 90, 36

 245, 250, 255

 245, 73, 11

 245, 64, 0

Harmonies

Analogous

The Analogous color harmony consists of three colors that are next to each other on the color wheel.



248, 172, 184



245, 181, 158



229, 225, 141

Triad

The Triadic color harmony groups three colors that are evenly spaced from another and form a triangle on the color wheel.



245, 181, 158



140, 185, 207



171, 187, 247

Complementary

The Complementary color scheme is a pair of colors which are on the opposite of each other on the color wheel.



245, 181, 158



158, 196, 245

Split Complementary

Split-complementary colors differ from the complementary color scheme. The scheme consists of three colors, the original color and two neighbors of the complement color.



133, 175, 244



245, 181, 158



115, 163, 208

Square

The Square scheme is like the rectangle color scheme, but the four colors are evenly spaced on the color wheel.



245, 181, 158



150, 202, 180



109, 162, 227



209, 182, 235

Rectangle

The Rectangle color scheme consists of four colors that form a rectangle on the color wheel.



245, 181, 158



166, 212, 137



109, 162, 227



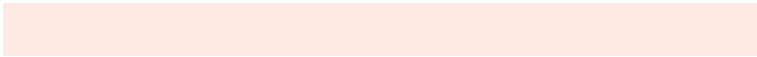
158, 184, 247

Sweetspot

The Sweet Spot groups the original color and five complimentary colors.



245, 181, 158



255, 235, 227



245, 158, 228



128, 115, 111



0, 0, 0



128, 128, 128

Same Dimension

The Same Dimension uses a secret algorithm to generate beautiful new colors.



245, 181, 158



255, 174, 145



195, 245, 158



122, 114, 110



186, 49, 0



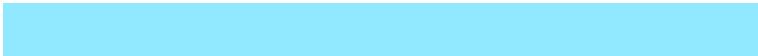
59, 15, 0

Inverse Universe

The Inverse Universe completely reimagines the original color for something new.



158, 196, 245



145, 194, 255



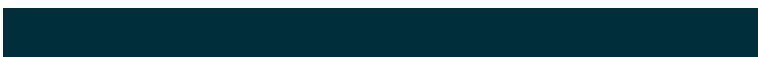
158, 178, 245



110, 115, 122



0, 82, 186



0, 26, 59

Previews

White Background



This preview shows how the RYB color 245, 181, 158 looks on a white background.

Color Contrast Check

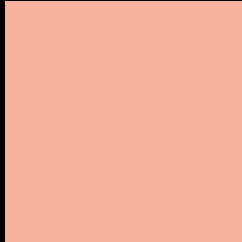
Large Text (above 18pt) WCAG AA × Fail

Any Text WCAG AA × Fail

Large Text (above 18pt) WCAG AAA × Fail

Any Text WCAG AAA × Fail

Black Background



This preview shows how the RYB color 245, 181, 158 looks on a black background.

Color Contrast Check

Large Text (above 18pt) WCAG AA ✓ Pass

Any Text WCAG AA ✓ Pass

Large Text (above 18pt) WCAG AAA ✓ Pass

Any Text WCAG AAA ✓ Pass

If you want to check with other color combinations, try the [Color Contrast Checker](#).

RYB 245, 181, 158 Background



This preview shows how black text looks on a background with the RYB color 245, 181, 158.



This preview shows how white text looks on a background with the RYB color 245, 181, 158.

Color Blindness Simulation

Color vision deficiency is a very complex topic, and I could not describe the different causes any better than Wikipedia does, so if you want to learn more, you should check out their [article about color blindness](#).

Dichromacy



Original Color
245, 181, 158

Protanopia
182, 203, 166

Deuteranopia
224, 207, 156



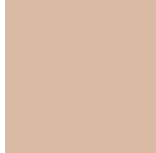
Tritanopia
248, 172, 185

Trichromacy



Original Color

245, 181, 158



Protanomaly

218, 203, 163



Deuteranomaly

232, 195, 157



Tritanomaly

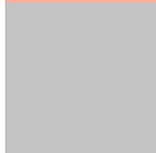
247, 174, 175

Monochromacy



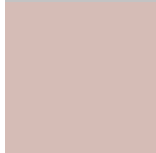
Original Color

245, 181, 158



Achromatopsia

195, 195, 195



Achromatomaly

213, 189, 182

CSS Examples

Text

The CSS property to change the color of the text to RYB 245, 181, 158 is called "color". The color property can be set on classes, ids or directly on the HTML element.

This example shows how text in the color rgb(245, 176, 158) looks like.

```
.text, #text, p{  
    color:rgb(245, 176, 158)  
}
```

If you want to add a text shadow in that color use the text-shadow property, you can generate a text shadow directly with our [CSS Text Shadow Generator](#).

Here you see how black text with a 4 pixel rgb(245, 176, 158) colored shadow looks like.

```
.shadow{ text-shadow: 4px 4px 2px rgb(245, 176, 158) }
```

Border

The CSS property to change the border of an element to RYB 245, 181, 158 is called "border". The border property can be set on classes, ids or directly on the HTML element.

This example shows the color as border, it can be applied via the CSS property "border" or "border-color".

```
.border, #border, table{ border:4px solid rgb(245, 176, 158) }
```

If only the border color should be changed use the property `border-color`.

```
.border{ border-color:rgb(245, 176, 158) }
```

If you want to add a box shadow in that color use:

Here you see how a box with a 4 pixel `rgb(245, 176, 158)` colored shadow looks like.

```
.boxshadow{ -moz-box-shadow:4px 4px 4px  
4px rgb(245, 176, 158); -webkit-box-  
shadow:4px 4px 4px 4px rgb(245, 176, 158);  
box-shadow:4px 4px 4px 4px rgb(245, 176,  
158) }
```

Background

The CSS property to change the background color of an element to RGB 245, 181, 158 is called "background". The background property can be set on classes, ids or directly on the HTML element.

```
.background, #background, body{  
background: rgb(245, 176, 158) }
```

If only the background color should be changed can be used:

```
.background{ background-color: rgb(245,  
176, 158) }
```

This example shows the color as background, it is applied via the CSS property "background".

To optimize and compress your CSS code, you can use our [online CSS compressor and optimizer](#) based on csstidy. If you want to create a linear or radial gradient as background or border, check our [CSS Gradient Generator](#).

Hey! You found this booklet interesting? Support Converting Colors with the new Membership Option!

The pro membership hides all ads, plus gives you double the colors in the color bucket, and more awesome pro features!

[Learn more, Memberships starting at \\$2.50/m!](#)

**Follow me
on Twitter!**

@ConvertingColor