

Converting Colors

`RYB(246, 87, 115)`

Have a look what the booklet for
RYB(246, 87, 115) contains.

RYB(246, 87, 115)	3
<i>Conversions</i>	4
<i>Details</i>	6
<i>Harmonies</i>	11
<i>Previews</i>	23
<i>Color Blindness Simulation</i>	26
<i>CSS Examples</i>	29

Color

RYB(246, 87, 115)

Conversions

Conversions Part 1

Format	Color
Hex	F65773
RGB	246, 87, 115
RGB Percent	96%, 34%, 45%
CMY	0.0353, 0.6588, 0.5490
CMYK	0.00, 0.65, 0.53, 0.04
HSL	349°, 90%, 65%
HSV	349°, 65%, 96%
XYZ	44.5087, 27.6470, 19.2102
YIQ	137.7330, 85.7760, 42.4160

Conversions

Conversions Part 2

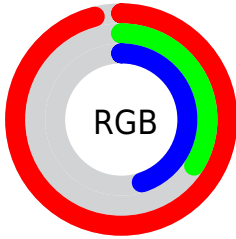
Format	Color
R_{YB}	246, 87, 115
Decimal	16144243
CIE _{Lab}	59.57, 62.55, 18.12
CIE _{LCh}	60, 65.119, 16.154
Yxy	27.6470, 0.4871, 0.3026
Android (android.graphics.Color)	4294334323 (0xFFFF65773)
YUV	137.7330, -11.2074, 94.9502
Hunter-Lab	52.5804, 59.0825, 15.1448

Details

The RYB color **246, 87, 115** is a light color, and the websafe version is hex **FF6666**. The color can be described as light muted rose. A complement of this color would be **87, 174, 246**, and the grayscale version is **138, 138, 138**.

A 20% lighter version of the original color is **255, 144, 167**, and **184, 17, 67** is the 20% darker color. If you saturate the color by 10%, you get **246, 62, 95**, and if you desaturate by 10%, it is **246, 112, 135**.

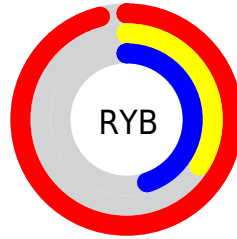
Distribution



Red (96%)

Green (34%)

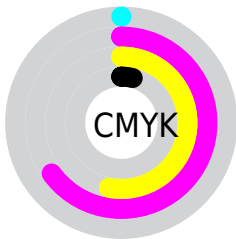
Blue (45%)



Red (96%)

Yellow (34%)

Blue (45%)

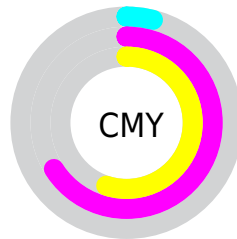


Cyan (0%)

Magenta (65%)

Yellow (53%)

Black (4%)



Cyan (4%)

Magenta (66%)

Yellow (55%)

Brightness & Saturation Gradients


These gradients show how the RYB color 246, 87, 115 changes by changing the brightness by 10 percent. The first figure shows a shift by +10% for each color and the second figure -10%.

Similar to the brightness gradients but the following saturation gradients show a change of the RYB color 246, 87, 115 by changing the saturation by 10% instead.

 246, 87, 115

 246, 87, 115

255, 255, 255

 215, 57, 91

 255, 144, 167

 184, 17, 67

 255, 173, 194

 153, 0, 45

 255, 202, 222

 123, 0, 25

 255, 231, 250

 93, 0, 0

 66, 0, 3

 31, 0, 1

 0, 0, 0


 246, 87, 115

 246, 87, 115

 246, 62, 95

 246, 112, 135

 246, 38, 74

 246, 136, 156

 246, 13, 54

 246, 161, 176

 246, 0, 43

 246, 185, 196

 246, 210, 216

 246, 235, 237

 246, 251, 255

Harmonies

Analogous

The Analogous color harmony consists of three colors that are next to each other on the color wheel.



233, 90, 172



246, 87, 115



230, 123, 62

Triad

The Triadic color harmony groups three colors that are evenly spaced from another and form a triangle on the color wheel.



246, 87, 115



58, 162, 147



0, 98, 255

Complementary

The Complementary color scheme is a pair of colors which are on the opposite of each other on the color wheel.



246, 87, 115



87, 174, 246

Split Complementary

Split-complementary colors differ from the complementary color scheme. The scheme consists of three colors, the original color and two neighbors of the complement color.



0, 96, 225



246, 87, 115



0, 100, 168

Square

The Square scheme is like the rectangle color scheme, but the four colors are evenly spaced on the color wheel.



246, 87, 115



2, 150, 10



0, 86, 174



85, 126, 254

Rectangle

The Rectangle color scheme consists of four colors that form a rectangle on the color wheel.



246, 87, 115



190, 207, 30



0, 86, 174



0, 98, 248

Sweetspot

The Sweet Spot groups the original color and five complimentary colors.



246, 87, 115



255, 207, 215



217, 87, 246



128, 98, 103



0, 0, 0



128, 128, 128

Same Dimension

The Same Dimension uses a secret algorithm to generate beautiful new colors.



246, 87, 115



255, 56, 91



246, 160, 87



122, 110, 112



186, 0, 33



59, 0, 10

Inverse Universe

The Inverse Universe completely reimagines the original color for something new.



246, 87, 115



255, 56, 91



87, 152, 246



122, 110, 112



186, 0, 33



59, 0, 10

Previews

White Background



This preview shows how the RYB color 246, 87, 115 looks on a white background.

Color Contrast Check

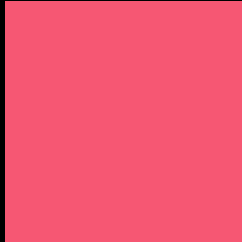
Large Text (above 18pt) WCAG AA ✓ Pass

Any Text WCAG AA ✗ Fail

Large Text (above 18pt) WCAG AAA ✗ Fail

Any Text WCAG AAA ✗ Fail

Black Background



This preview shows how the RYB color 246, 87, 115 looks on a black background.

Color Contrast Check

Large Text (above 18pt) WCAG AA ✓ Pass

Any Text WCAG AA ✓ Pass

Large Text (above 18pt) WCAG AAA ✓ Pass

Any Text WCAG AAA × Fail

If you want to check with other color combinations, try the [Color Contrast Checker](#).

RYB 246, 87, 115 Background



This preview shows how black text looks on a background with the RYB color 246, 87, 115.

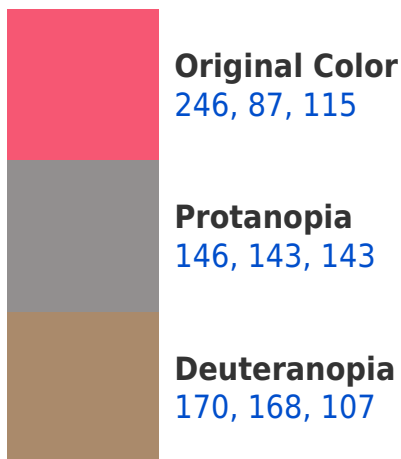


This preview shows how white text looks on a background with the RYB color 246, 87, 115.

Color Blindness Simulation

Color vision deficiency is a very complex topic, and I could not describe the different causes any better than Wikipedia does, so if you want to learn more, you should check out their [article about color blindness](#).

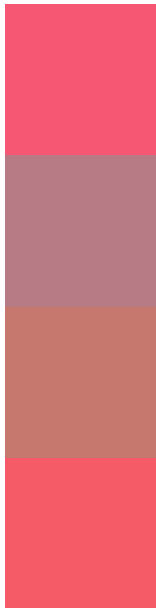
Dichromacy





Tritanopia
245, 91, 96

Trichromacy



Original Color
246, 87, 115

Protanomaly
182, 123, 133

Deuteranomaly
198, 120, 110

Tritanomaly
245, 90, 103

Monochromacy



Original Color
246, 87, 115

Achromatopsia
138, 138, 138

Achromatomaly
177, 119, 130

CSS Examples

Text

The CSS property to change the color of the text to RYB 246, 87, 115 is called "color". The color property can be set on classes, ids or directly on the HTML element.

This example shows how text in the color `rgb(246, 87, 115)` looks like.

```
.text, #text, p{  
    color:rgb(246, 87, 115)  
}
```

If you want to add a text shadow in that color use the text-shadow property, you can generate a text shadow directly with our [CSS Text Shadow Generator](#).

Here you see how black text with a 4 pixel rgb(246, 87, 115) colored shadow looks like.

```
.shadow{ text-shadow: 4px 4px 2px rgb(246, 87, 115) }
```

Border

The CSS property to change the border of an element to RYB 246, 87, 115 is called "border". The border property can be set on classes, ids or directly on the HTML element.

This example shows the color as border, it can be applied via the CSS property "border" or "border-color".

```
.border, #border, table{ border:4px solid rgb(246, 87, 115) }
```

If only the border color should be changed use the property `border-color`.

```
.border{ border-color:rgb(246, 87, 115) }
```

If you want to add a box shadow in that color use:

Here you see how a box with a 4 pixel `rgb(246, 87, 115)` colored shadow looks like.

```
.boxshadow{ -moz-box-shadow:4px 4px 4px  
4px rgb(246, 87, 115); -webkit-box-  
shadow:4px 4px 4px 4px rgb(246, 87, 115);  
box-shadow:4px 4px 4px 4px rgb(246, 87,  
115) }
```

Background

The CSS property to change the background color of an element to RYB 246, 87, 115 is called "background". The background property can be set on classes, ids or directly on the HTML element.

```
.background, #background, body{  
background: rgb(246, 87, 115) }
```

If only the background color should be changed can be used:

```
.background{ background-color: rgb(246, 87,  
115) }
```

This example shows the color as background, it is applied via the CSS property "background".

To optimize and compress your CSS code, you can use our [online CSS compressor and optimizer](#) based on csstidy. If you want to create a linear or radial gradient as background or border, check our [CSS Gradient Generator](#).

Hey! You found this booklet interesting? Support Converting Colors with the new Membership Option!

The pro membership hides all ads, plus gives you double the colors in the color bucket, and more awesome pro features!

[Learn more, Memberships starting at \\$2.50/m!](#)

**Follow me
on Twitter!**

@ConvertingColor