

Converting Colors

`RYB(247, 93, 122)`

Have a look what the booklet for
RYB(247, 93, 122) contains.

RYB(247, 93, 122)	3
<i>Conversions</i>	4
<i>Details</i>	6
<i>Harmonies</i>	11
<i>Previews</i>	23
<i>Color Blindness Simulation</i>	26
<i>CSS Examples</i>	29

Color

`RYB(247, 93, 122)`

Conversions

Conversions Part 1

Format	Color
Hex	F75D7A
RGB	247, 93, 122
RGB Percent	97%, 36%, 48%
CMY	0.0314, 0.6353, 0.5216
CMYK	0.00, 0.62, 0.51, 0.03
HSL	349°, 91%, 67%
HSV	349°, 62%, 97%
XYZ	45.7850, 29.0080, 21.5983
YIQ	142.3520, 82.4750, 41.6670

Conversions

Conversions Part 2

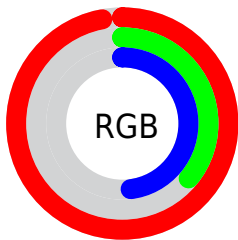
Format	Color
R _Y B	247, 93, 122
Decimal	16211322
CIE Lab	60.79, 60.97, 15.75
CIE LCh	61, 62.968, 14.489
Yxy	29.0080, 0.4750, 0.3009
Android (android.graphics.Color)	4294401402 (0xFFFF75D7A)
YUV	142.3520, -10.0335, 91.7763
Hunter-Lab	53.8591, 57.4874, 13.9251

Details

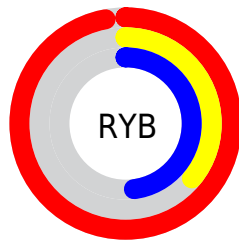
The RYB color **247, 93, 122** is a light color, and the websafe version is hex **FF6699**. The color can be described as light muted rose. A complement of this color would be **93, 178, 247**, and the grayscale version is **142, 142, 142**.

A 20% lighter version of the original color is **255, 150, 174**, and **185, 30, 74** is the 20% darker color. If you saturate the color by 10%, you get **247, 68, 102**, and if you desaturate by 10%, it is **247, 118, 142**.

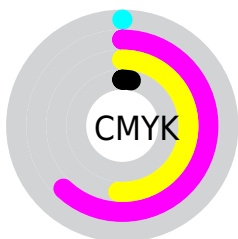
Distribution



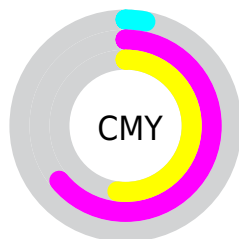
- Red (97%)
- Green (36%)
- Blue (48%)



- Red (97%)
- Yellow (36%)
- Blue (48%)



- Cyan (0%)
- Magenta (62%)
- Yellow (51%)
- Black (3%)



- Cyan (3%)
- Magenta (64%)
- Yellow (52%)

Brightness & Saturation Gradients

These gradients show how the RYB color 247, 93, 122 changes by changing the brightness by 10 percent. The first figure shows a shift by +10% for each color and the second figure -10%.

Similar to the brightness gradients but the following saturation gradients show a change of the RYB color 247, 93, 122 by changing the saturation by 10% instead.



247, 93, 122



247, 93, 122

255, 255, 255



216, 64, 97



255, 150, 174



185, 30, 74



255, 178, 202



155, 0, 51



255, 207, 230



125, 0, 31



255, 237, 255



95, 0, 6



68, 0, 3



35, 0, 1



0, 0, 0



247, 93, 122



247, 93, 122

■ 247, 68, 102

■ 247, 118, 142

■ 247, 44, 82

■ 247, 142, 162

■ 247, 19, 62

■ 247, 167, 182

■ 247, 0, 47

■ 247, 192, 202

■ 247, 216, 222

■ 247, 241, 242

■ 247, 251, 255

Harmonies

Analogous

The Analogous color harmony consists of three colors that are next to each other on the color wheel.



232, 97, 178



247, 93, 122



233, 122, 71

Triad

The Triadic color harmony groups three colors that are evenly spaced from another and form a triangle on the color wheel.



247, 93, 122



61, 165, 141



0, 99, 254

Complementary

The Complementary color scheme is a pair of colors which are on the opposite of each other on the color wheel.



247, 93, 122



93, 178, 247

Split Complementary

Split-complementary colors differ from the complementary color scheme. The scheme consists of three colors, the original color and two neighbors of the complement color.



0, 97, 224



247, 93, 122



0, 102, 171

Square

The Square scheme is like the rectangle color scheme, but the four colors are evenly spaced on the color wheel.



247, 93, 122



19, 152, 22



0, 87, 173



85, 129, 255

Rectangle

The Rectangle color scheme consists of four colors that form a rectangle on the color wheel.



247, 93, 122



212, 210, 41



0, 87, 173



0, 99, 247

Sweetspot

The Sweet Spot groups the original color and five complimentary colors.



247, 93, 122



255, 207, 216



216, 93, 247



128, 98, 104



0, 0, 0



128, 128, 128

Same Dimension

The Same Dimension uses a secret algorithm to generate beautiful new colors.



247, 93, 122



255, 64, 100



247, 159, 93



122, 110, 112



186, 0, 35



59, 0, 11

Inverse Universe

The Inverse Universe completely reimagines the original color for something new.



247, 93, 122



255, 64, 100



93, 156, 247



122, 110, 112



186, 0, 35



59, 0, 11

Previews

White Background



This preview shows how the RYB color 247, 93, 122 looks on a white background.

Color Contrast Check

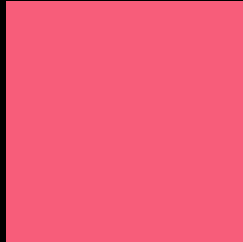
Large Text (above 18pt) WCAG AA ✓ Pass

Any Text WCAG AA × Fail

Large Text (above 18pt) WCAG AAA × Fail

Any Text WCAG AAA × Fail

Black Background



This preview shows how the RYB color 247, 93, 122 looks on a black background.

Color Contrast Check

Large Text (above 18pt) WCAG AA ✓ Pass

Any Text WCAG AA ✓ Pass

Large Text (above 18pt) WCAG AAA ✓ Pass

Any Text WCAG AAA × Fail

If you want to check with other color combinations, try the [Color Contrast Checker](#).

RYB 247, 93, 122 Background



This preview shows how black text looks on a background with the RYB color 247, 93, 122.




This preview shows how white text looks on a background with the RYB color 247, 93, 122.

Color Blindness Simulation

Color vision deficiency is a very complex topic, and I could not describe the different causes any better than Wikipedia does, so if you want to learn more, you should check out their [article about color blindness](#).

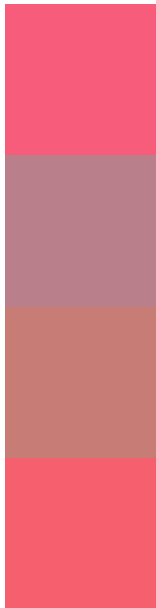
Dichromacy





Tritanopia
246, 97, 103

Trichromacy



Original Color
247, 93, 122

Protanomaly
185, 127, 139

Deuteranomaly
199, 124, 118

Tritanomaly
246, 96, 110

Monochromacy



Original Color
247, 93, 122

Achromatopsia
142, 142, 142

Achromatomaly
180, 124, 135

CSS Examples

Text

The CSS property to change the color of the text to RYB 247, 93, 122 is called "color". The color property can be set on classes, ids or directly on the HTML element.

This example shows how text in the color rgb(247, 93, 122) looks like.

```
.text, #text, p{  
    color:rgb(247, 93, 122)  
}
```

If you want to add a text shadow in that color use the text-shadow property, you can generate a text shadow directly with our [CSS Text Shadow Generator](#).

Here you see how black text with a 4 pixel rgb(247, 93, 122) colored shadow looks like.

```
.shadow{ text-shadow: 4px 4px 2px rgb(247, 93, 122) }
```

Border

The CSS property to change the border of an element to RYB 247, 93, 122 is called "border". The border property can be set on classes, ids or directly on the HTML element.

This example shows the color as border, it can be applied via the CSS property "border" or "border-color".

```
.border, #border, table{ border:4px solid rgb(247, 93, 122) }
```

If only the border color should be changed use the property `border-color`.

```
.border{ border-color:rgb(247, 93, 122) }
```

If you want to add a box shadow in that color use:

Here you see how a box with a 4 pixel `rgb(247, 93, 122)` colored shadow looks like.

```
.boxshadow{ -moz-box-shadow:4px 4px 4px  
4px rgb(247, 93, 122); -webkit-box-  
shadow:4px 4px 4px 4px rgb(247, 93, 122);  
box-shadow:4px 4px 4px 4px rgb(247, 93,  
122) }
```

Background

The CSS property to change the background color of an element to RGB 247, 93, 122 is called "background". The background property can be set on classes, ids or directly on the HTML element.

```
.background, #background, body{  
background: rgb(247, 93, 122) }
```

If only the background color should be changed can be used:

```
.background{ background-color: rgb(247, 93,  
122) }
```

This example shows the color as background, it is applied via the CSS property "background".

To optimize and compress your CSS code, you can use our [online CSS compressor and optimizer](#) based on csstidy. If you want to create a linear or radial gradient as background or border, check our [CSS Gradient Generator](#).

Hey! You found this booklet interesting? Support Converting Colors with the new Membership Option!

The pro membership hides all ads, plus gives you double the colors in the color bucket, and more awesome pro features!

[Learn more, Memberships starting at \\$2.50/m!](#)

**Follow me
on Twitter!**

@ConvertingColor