

Converting Colors

`RYB(248, 106, 151)`

Have a look what the booklet for
RYB(248, 106, 151) contains.

RYB(248, 106, 151)	3
<i>Conversions</i>	4
<i>Details</i>	6
<i>Harmonies</i>	11
<i>Previews</i>	23
<i>Color Blindness Simulation</i>	26
<i>CSS Examples</i>	29

Color

`RYB(248, 106, 151)`

Conversions

Conversions Part 1

Format	Color
Hex	F86A97
RGB	248, 106, 151
RGB Percent	97%, 42%, 59%
CMY	0.0275, 0.5843, 0.4078
CMYK	0.00, 0.57, 0.39, 0.03
HSL	341°, 91%, 69%
HSV	341°, 57%, 97%
XYZ	49.4513, 32.4989, 32.9447
YIQ	153.5880, 70.1870, 44.0990

Conversions

Conversions Part 2

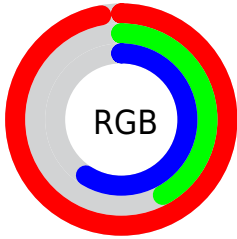
Format	Color
R _Y B	248, 106, 151
Decimal	16280215
CIE Lab	63.75, 58.38, 3.24
CIE LCh	64, 58.472, 3.174
Yxy	32.4989, 0.4304, 0.2829
Android (android.graphics.Color)	4294470295 (0xFFFF86A97)
YUV	153.5880, -1.2759, 82.7993
Hunter-Lab	57.0078, 55.0760, 5.6419

Details

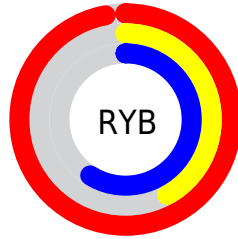
The RYB color **248, 106, 151** is a light color, and the websafe version is hex **FF6699**. A complement of this color would be **106, 190, 248**, and the grayscale version is **154, 154, 154**.

A 20% lighter version of the original color is **255, 162, 205**, and **187, 48, 100** is the 20% darker color. If you saturate the color by 10%, you get **248, 81, 134**, and if you desaturate by 10%, it is **248, 131, 168**.

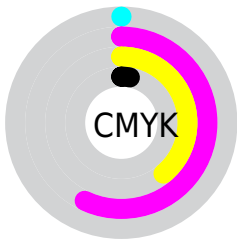
Distribution



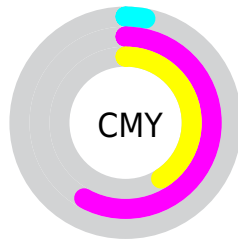
- Red (97%)
- Green (42%)
- Blue (59%)



- Red (97%)
- Yellow (42%)
- Blue (59%)



- Cyan (0%)
- Magenta (57%)
- Yellow (39%)
- Black (3%)




- Cyan (3%)
- Magenta (58%)
- Yellow (41%)

Brightness & Saturation Gradients

These gradients show how the RYB color 248, 106, 151 changes by changing the brightness by 10 percent. The first figure shows a shift by +10% for each color and the second figure -10%.

Similar to the brightness gradients but the following saturation gradients show a change of the RYB color 248, 106, 151 by changing the saturation by 10% instead.

 248, 106, 151

 248, 106, 151

255, 255, 255

 218, 78, 125

 255, 162, 205

 187, 48, 100

 255, 191, 233

 158, 5, 77

 255, 220, 255

 129, 0, 54

 255, 249, 255


 100, 0, 33

 72, 0, 9

 44, 0, 1

 0, 0, 0

 248, 106, 151

 248, 106, 151

■ 248, 81, 134

■ 248, 131, 168

■ 248, 56, 117

■ 248, 156, 185

■ 248, 32, 100

■ 248, 180, 202

■ 248, 7, 83

■ 248, 205, 219

■ 248, 0, 79

■ 248, 230, 236

■ 248, 252, 255

■ 248, 252, 255

Harmonies

Analogous

The Analogous color harmony consists of three colors that are next to each other on the color wheel.



222, 117, 202



248, 106, 151



245, 117, 100

Triad

The Triadic color harmony groups three colors that are evenly spaced from another and form a triangle on the color wheel.



248, 106, 151



61, 168, 105



0, 101, 247

Complementary

The Complementary color scheme is a pair of colors which are on the opposite of each other on the color wheel.



248, 106, 151



106, 190, 248

Split Complementary

Split-complementary colors differ from the complementary color scheme. The scheme consists of three colors, the original color and two neighbors of the complement color.



0, 97, 210



248, 106, 151



37, 130, 176

Square

The Square scheme is like the rectangle color scheme, but the four colors are evenly spaced on the color wheel.



248, 106, 151



68, 177, 40



0, 96, 180



39, 116, 255

Rectangle

The Rectangle color scheme consists of four colors that form a rectangle on the color wheel.



248, 106, 151



230, 156, 72



0, 96, 180



0, 101, 237

Sweetspot

The Sweet Spot groups the original color and five complimentary colors.



248, 106, 151



255, 212, 225



201, 106, 248



128, 102, 110



0, 0, 0



128, 128, 128

Same Dimension

The Same Dimension uses a secret algorithm to generate beautiful new colors.



248, 106, 151



255, 79, 135



248, 135, 106



125, 112, 116



189, 0, 60



61, 0, 19

Inverse Universe

The Inverse Universe completely reimagines the original color for something new.



248, 106, 151



255, 79, 135



106, 170, 248



125, 112, 116



189, 0, 60



61, 0, 19

Previews

White Background



This preview shows how the RYB color 248, 106, 151 looks on a white background.

Color Contrast Check

Large Text (above 18pt) WCAG AA × Fail

Any Text WCAG AA × Fail

Large Text (above 18pt) WCAG AAA × Fail

Any Text WCAG AAA × Fail

Black Background



This preview shows how the RYB color 248, 106, 151 looks on a black background.

Color Contrast Check

Large Text (above 18pt) WCAG AA ✓ Pass

Any Text WCAG AA ✓ Pass

Large Text (above 18pt) WCAG AAA ✓ Pass

Any Text WCAG AAA ✓ Pass

If you want to check with other color combinations, try the [Color Contrast Checker](#).

RYB 248, 106, 151 Background



This preview shows how black text looks on a background with the RYB color 248, 106, 151.

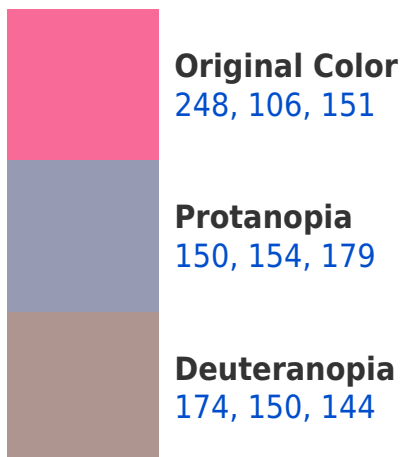


This preview shows how white text looks on a background with the RYB color 248, 106, 151.

Color Blindness Simulation

Color vision deficiency is a very complex topic, and I could not describe the different causes any better than Wikipedia does, so if you want to learn more, you should check out their [article about color blindness](#).

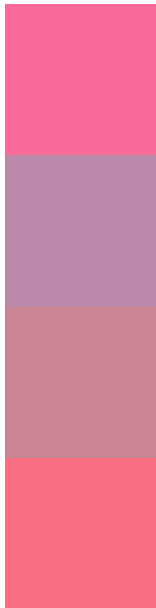
Dichromacy





Tritanopia
246, 112, 120

Trichromacy



Original Color

248, 106, 151

Protanomaly

186, 137, 169

Deuteranomaly

201, 133, 147

Tritanomaly

247, 110, 131

Monochromacy



Original Color

248, 106, 151

Achromatopsia

154, 154, 154

Achromatomaly

188, 137, 153

CSS Examples

Text

The CSS property to change the color of the text to RYB 248, 106, 151 is called "color". The color property can be set on classes, ids or directly on the HTML element.

This example shows how text in the color rgb(248, 106, 151) looks like.

```
.text, #text, p{  
    color:rgb(248, 106, 151)  
}
```

If you want to add a text shadow in that color use the text-shadow property, you can generate a text shadow directly with our [CSS Text Shadow Generator](#).

Here you see how black text with a 4 pixel rgb(248, 106, 151) colored shadow looks like.

```
.shadow{ text-shadow: 4px 4px 2px rgb(248, 106, 151) }
```

Border

The CSS property to change the border of an element to RYB 248, 106, 151 is called "border". The border property can be set on classes, ids or directly on the HTML element.

This example shows the color as border, it can be applied via the CSS property "border" or "border-color".

```
.border, #border, table{ border:4px solid rgb(248, 106, 151) }
```

If only the border color should be changed use the property `border-color`.

```
.border{ border-color:rgb(248, 106, 151) }
```

If you want to add a box shadow in that color use:

Here you see how a box with a 4 pixel `rgb(248, 106, 151)` colored shadow looks like.

```
.boxshadow{ -moz-box-shadow:4px 4px 4px  
4px rgb(248, 106, 151); -webkit-box-  
shadow:4px 4px 4px 4px rgb(248, 106, 151);  
box-shadow:4px 4px 4px 4px rgb(248, 106,  
151) }
```

Background

The CSS property to change the background color of an element to RYB 248, 106, 151 is called "background". The background property can be set on classes, ids or directly on the HTML element.

```
.background, #background, body{  
background: rgb(248, 106, 151) }
```

If only the background color should be changed can be used:

```
.background{ background-color: rgb(248,  
106, 151) }
```

This example shows the color as background, it is applied via the CSS property "background".

To optimize and compress your CSS code, you can use our [online CSS compressor and optimizer](#) based on csstidy. If you want to create a linear or radial gradient as background or border, check our [CSS Gradient Generator](#).

Hey! You found this booklet interesting? Support Converting Colors with the new Membership Option!

The pro membership hides all ads, plus gives you double the colors in the color bucket, and more awesome pro features!

[Learn more, Memberships starting at \\$2.50/m!](#)

**Follow me
on Twitter!**

@ConvertingColor