

Converting Colors

`RYB(249, 162, 129)`

Have a look what the booklet for
RYB(249, 162, 129) contains.

RYB(249, 162, 129)	3
<i>Conversions</i>	4
<i>Details</i>	6
<i>Harmonies</i>	11
<i>Previews</i>	23
<i>Color Blindness Simulation</i>	26
<i>CSS Examples</i>	29

Color

R_YB(249, 162, 129)

Conversions

Conversions Part 1

Format	Color
Hex	F99B81
RGB	249, 155, 129
RGB Percent	98%, 61%, 51%
CMY	0.0235, 0.3926, 0.4941
CMYK	0.00, 0.38, 0.48, 0.02
HSL	13°, 91%, 74%
HSV	13°, 48%, 98%
XYZ	54.7311, 45.1283, 26.5949
YIQ	180.1420, 64.3700, 11.8420

Conversions

Conversions Part 2

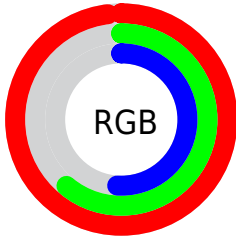
Format	Color
R _Y B	249, 162, 129
Decimal	16358273
CIE Lab	72.98, 32.46, 28.39
CIE LCh	73, 43.121, 41.174
Yxy	45.1283, 0.4328, 0.3569
Android (android.graphics.Color)	4294548353 (0xFFFF99B81)
YUV	180.1420, -25.2130, 60.3885
Hunter-Lab	67.1776, 27.8674, 23.5520

Details

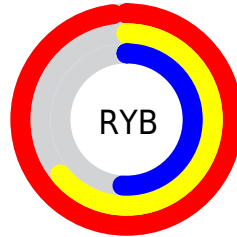
The RYB color **249, 162, 129** is a light color, and the websafe version is hex **FF9999**. A complement of this color would be **129, 182, 249**, and the grayscale version is **180, 180, 180**.

A 20% lighter version of the original color is **255, 227, 182**, and **189, 110, 79** is the 20% darker color. If you saturate the color by 10%, you get **249, 143, 104**, and if you desaturate by 10%, it is **249, 179, 154**.

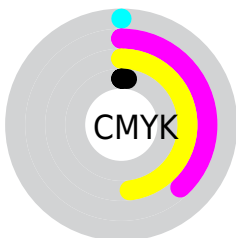
Distribution



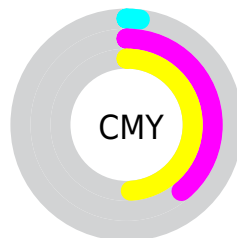
- Red (98%)
- Green (61%)
- Blue (51%)



- Red (98%)
- Yellow (64%)
- Blue (51%)



- Cyan (0%)
- Magenta (38%)
- Yellow (48%)
- Black (2%)




- Cyan (2%)
- Magenta (39%)
- Yellow (49%)

Brightness & Saturation Gradients

These gradients show how the RYB color 249, 162, 129 changes by changing the brightness by 10 percent. The first figure shows a shift by +10% for each color and the second figure -10%.

Similar to the brightness gradients but the following saturation gradients show a change of the RYB color 249, 162, 129 by changing the saturation by 10% instead.

 249, 162, 129

 249, 162, 129

255, 255, 255

 219, 134, 104


 255, 227, 182

 189, 110, 79

 235, 255, 210

 160, 82, 56

 238, 255, 238

 131, 58, 34

 103, 32, 13

 76, 2, 0

 50, 0, 0

 6, 0, 0


 0, 0, 0

 249, 162, 129


 249, 162, 129

 249, 143, 104

 249, 179, 154

 249, 126, 79

 249, 198, 179

 249, 108, 54

 249, 215, 204

 249, 90, 29

 249, 234, 229

 249, 71, 5

 249, 251, 254

 249, 69, 0

 249, 252, 255

Harmonies

Analogous

The Analogous color harmony consists of three colors that are next to each other on the color wheel.



255, 148, 166



249, 162, 129



214, 225, 105

Triad

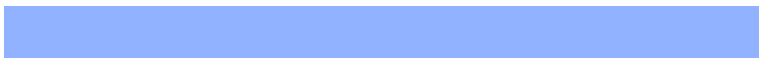
The Triadic color harmony groups three colors that are evenly spaced from another and form a triangle on the color wheel.



249, 162, 129



95, 161, 198



144, 170, 255

Complementary

The Complementary color scheme is a pair of colors which are on the opposite of each other on the color wheel.



249, 162, 129



129, 182, 249

Split Complementary

Split-complementary colors differ from the complementary color scheme. The scheme consists of three colors, the original color and two neighbors of the complement color.



65, 140, 253



249, 162, 129



0, 102, 200

Square

The Square scheme is like the rectangle color scheme, but the four colors are evenly spaced on the color wheel.



249, 162, 129



118, 192, 163



0, 106, 230



202, 163, 239

Rectangle

The Rectangle color scheme consists of four colors that form a rectangle on the color wheel.



249, 162, 129



134, 203, 99



0, 106, 230



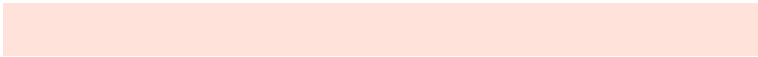
121, 163, 255

Sweetspot

The Sweet Spot groups the original color and five complimentary colors.



249, 162, 129



255, 229, 219



249, 129, 225



128, 112, 106



0, 0, 0



128, 128, 128

Same Dimension

The Same Dimension uses a secret algorithm to generate beautiful new colors.



249, 162, 129



255, 148, 107



180, 249, 129



125, 116, 112



189, 52, 0



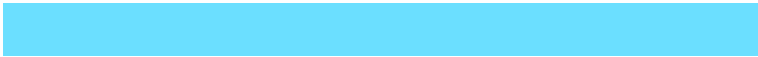
61, 17, 0

Inverse Universe

The Inverse Universe completely reimagines the original color for something new.



129, 182, 249



107, 172, 255



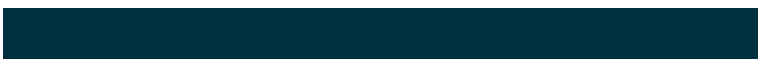
129, 157, 249



112, 118, 125



0, 83, 189



0, 27, 61

Previews

White Background



This preview shows how the RYB color 249, 162, 129 looks on a white background.

Color Contrast Check

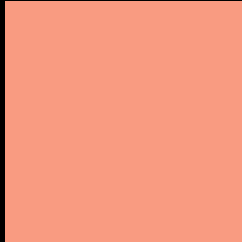
Large Text (above 18pt) WCAG AA × Fail

Any Text WCAG AA × Fail

Large Text (above 18pt) WCAG AAA × Fail

Any Text WCAG AAA × Fail

Black Background



This preview shows how the RYB color 249, 162, 129 looks on a black background.

Color Contrast Check

Large Text (above 18pt) WCAG AA ✓ Pass

Any Text WCAG AA ✓ Pass

Large Text (above 18pt) WCAG AAA ✓ Pass

Any Text WCAG AAA ✓ Pass

If you want to check with other color combinations, try the [Color Contrast Checker](#).

RYB 249, 162, 129 Background



This preview shows how black text looks on a background with the RYB color 249, 162, 129.

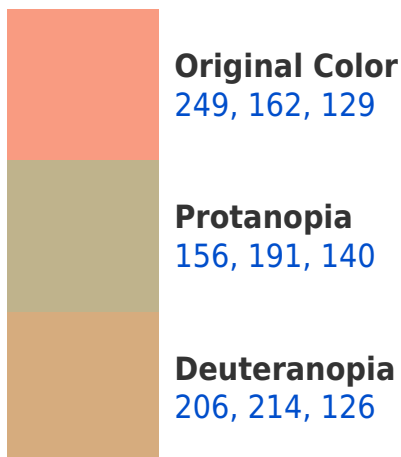


This preview shows how white text looks on a background with the RYB color 249, 162, 129.

Color Blindness Simulation

Color vision deficiency is a very complex topic, and I could not describe the different causes any better than Wikipedia does, so if you want to learn more, you should check out their [article about color blindness](#).

Dichromacy





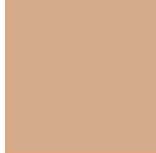
Tritanopia
252, 150, 161

Trichromacy



Original Color

249, 162, 129



Protanomaly

212, 198, 136



Deuteranomaly

227, 191, 127



Tritanomaly

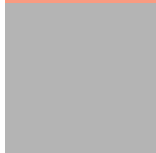
251, 152, 149

Monochromacy



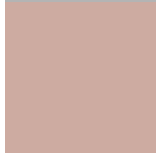
Original Color

249, 162, 129



Achromatopsia

180, 180, 180



Achromatomaly

205, 174, 161

CSS Examples

Text

The CSS property to change the color of the text to RYB 249, 162, 129 is called "color". The color property can be set on classes, ids or directly on the HTML element.

This example shows how text in the color rgb(249, 155, 129) looks like.

```
.text, #text, p{  
    color:rgb(249, 155, 129)  
}
```

If you want to add a text shadow in that color use the text-shadow property, you can generate a text shadow directly with our [CSS Text Shadow Generator](#).

Here you see how black text with a 4 pixel rgb(249, 155, 129) colored shadow looks like.

```
.shadow{ text-shadow: 4px 4px 2px rgb(249, 155, 129) }
```

Border

The CSS property to change the border of an element to RYB 249, 162, 129 is called "border". The border property can be set on classes, ids or directly on the HTML element.

This example shows the color as border, it can be applied via the CSS property "border" or "border-color".

```
.border, #border, table{ border:4px solid rgb(249, 155, 129) }
```

If only the border color should be changed use the property `border-color`.

```
.border{ border-color:rgb(249, 155, 129) }
```

If you want to add a box shadow in that color use:

Here you see how a box with a 4 pixel `rgb(249, 155, 129)` colored shadow looks like.

```
.boxshadow{ -moz-box-shadow:4px 4px 4px  
4px rgb(249, 155, 129); -webkit-box-  
shadow:4px 4px 4px 4px rgb(249, 155, 129);  
box-shadow:4px 4px 4px 4px rgb(249, 155,  
129) }
```

Background

The CSS property to change the background color of an element to RYB 249, 162, 129 is called "background". The background property can be set on classes, ids or directly on the HTML element.

```
.background, #background, body{  
background: rgb(249, 155, 129) }
```

If only the background color should be changed can be used:

```
.background{ background-color: rgb(249,  
155, 129) }
```

This example shows the color as background, it is applied via the CSS property "background".

To optimize and compress your CSS code, you can use our [online CSS compressor and optimizer](#) based on csstidy. If you want to create a linear or radial gradient as background or border, check our [CSS Gradient Generator](#).

Hey! You found this booklet interesting? Support Converting Colors with the new Membership Option!

The pro membership hides all ads, plus gives you double the colors in the color bucket, and more awesome pro features!

[Learn more, Memberships starting at \\$2.50/m!](#)

**Follow me
on Twitter!**

@ConvertingColor