

Converting Colors

`RYB(250, 186, 174)`

Have a look what the booklet for
RYB(250, 186, 174) contains.

RYB(250, 186, 174)	3
<i>Conversions</i>	4
<i>Details</i>	6
<i>Harmonies</i>	11
<i>Previews</i>	23
<i>Color Blindness Simulation</i>	26
<i>CSS Examples</i>	29

Color

R_YB(250, 186, 174)

Conversions

Conversions Part 1

Format	Color
Hex	FAB8AE
RGB	250, 184, 174
RGB Percent	98%, 72%, 68%
CMY	0.0196, 0.2770, 0.3176
CMYK	0.00, 0.26, 0.30, 0.02
HSL	8°, 88%, 83%
HSV	8°, 30%, 98%
XYZ	64.2805, 57.8122, 47.8153
YIQ	202.5940, 42.5460, 10.8820

Conversions

Conversions Part 2

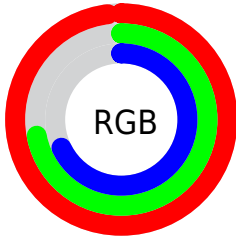
Format	Color
R _Y B	250, 186, 174
Decimal	16431278
CIE Lab	80.63, 22.36, 14.59
CIE LCh	81, 26.698, 33.130
Yxy	57.8122, 0.3783, 0.3403
Android (android.graphics.Color)	4294621358 (0xFFFAB8AE)
YUV	202.5940, -14.0968, 41.5751
Hunter-Lab	76.0344, 17.8461, 15.9387

Details

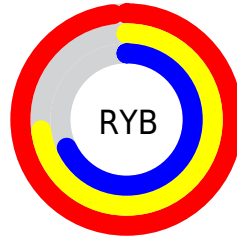
The RYB color **250, 186, 174** is a light color, and the websafe version is hex **FFCCCC**. A complement of this color would be **174, 209, 250**, and the grayscale version is **203, 203, 203**.

A 20% lighter version of the original color is **255, 248, 229**, and **192, 132, 122** is the 20% darker color. If you saturate the color by 10%, you get **250, 165, 149**, and if you desaturate by 10%, it is **250, 207, 199**.

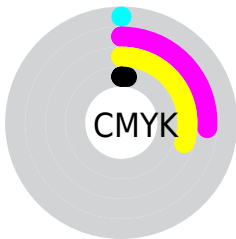
Distribution



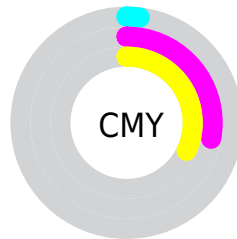
- Red (98%)
- Green (72%)
- Blue (68%)



- Red (98%)
- Yellow (73%)
- Blue (68%)



- Cyan (0%)
- Magenta (26%)
- Yellow (30%)
- Black (2%)




- Cyan (2%)
- Magenta (28%)
- Yellow (32%)

Brightness & Saturation Gradients


These gradients show how the RYB color 250, 186, 174 changes by changing the brightness by 10 percent. The first figure shows a shift by +10% for each color and the second figure -10%.


Similar to the brightness gradients but the following saturation gradients show a change of the RYB color 250, 186, 174 by changing the saturation by 10% instead.

 250, 186, 174

255, 255, 255

 255, 251, 229

 250, 186, 174

 221, 159, 147

 192, 132, 122

 164, 106, 97

 137, 82, 73

 110, 58, 50

 84, 36, 29

 59, 13, 5

 37, 0, 1

 0, 0, 0

■ 250, 186, 174

■ 250, 186, 174

■ 250, 165, 149

■ 250, 207, 199

■ 250, 144, 124

■ 250, 229, 224

■ 250, 123, 99

■ 250, 249, 249

■ 250, 102, 74

■ 250, 253, 255

■ 250, 80, 49

■ 250, 60, 24

■ 250, 39, 0

Harmonies

Analogous

The Analogous color harmony consists of three colors that are next to each other on the color wheel.



249, 182, 198



250, 186, 174



238, 217, 156

Triad

The Triadic color harmony groups three colors that are evenly spaced from another and form a triangle on the color wheel.



250, 186, 174



160, 199, 212



174, 194, 249

Complementary

The Complementary color scheme is a pair of colors which are on the opposite of each other on the color wheel.



250, 186, 174



174, 209, 250

Split Complementary

Split-complementary colors differ from the complementary color scheme. The scheme consists of three colors, the original color and two neighbors of the complement color.



143, 183, 244



250, 186, 174



137, 179, 214

Square

The Square scheme is like the rectangle color scheme, but the four colors are evenly spaced on the color wheel.



250, 186, 174



158, 207, 176



128, 174, 226



208, 193, 242

Rectangle

The Rectangle color scheme consists of four colors that form a rectangle on the color wheel.



250, 186, 174



194, 224, 151



128, 174, 226



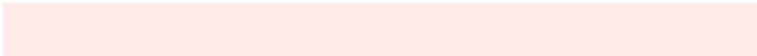
162, 190, 249

Sweetspot

The Sweet Spot groups the original color and five complimentary colors.



250, 186, 174



255, 235, 232



250, 174, 240



128, 115, 113



0, 0, 0



128, 128, 128

Same Dimension

The Same Dimension uses a secret algorithm to generate beautiful new colors.



250, 186, 174



255, 178, 163



218, 250, 174



125, 114, 112



189, 30, 0



61, 9, 0

Inverse Universe

The Inverse Universe completely reimagines the original color for something new.



174, 209, 250



163, 206, 255



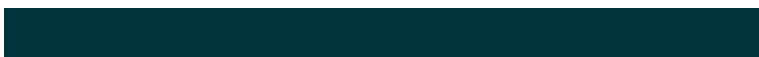
174, 194, 250



112, 118, 125



0, 88, 189



0, 28, 61

Previews

White Background



This preview shows how the RYB color 250, 186, 174 looks on a white background.

Color Contrast Check

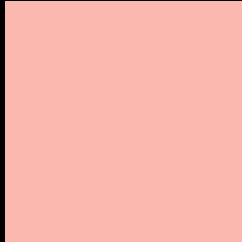
Large Text (above 18pt) WCAG AA × Fail

Any Text WCAG AA × Fail

Large Text (above 18pt) WCAG AAA × Fail

Any Text WCAG AAA × Fail

Black Background



This preview shows how the RYB color 250, 186, 174 looks on a black background.

Color Contrast Check

Large Text (above 18pt) WCAG AA ✓ Pass

Any Text WCAG AA ✓ Pass

Large Text (above 18pt) WCAG AAA ✓ Pass

Any Text WCAG AAA ✓ Pass

If you want to check with other color combinations, try the [Color Contrast Checker](#).

RYB 250, 186, 174 Background



This preview shows how black text looks on a background with the RYB color 250, 186, 174.

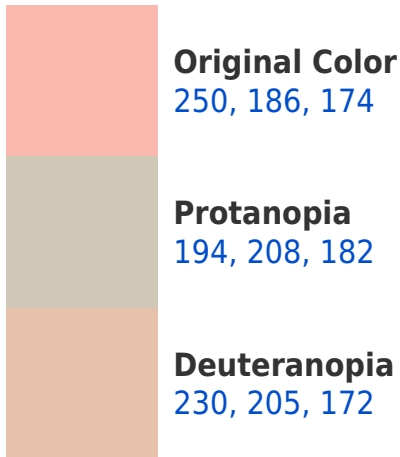



This preview shows how white text looks on a background with the RYB color 250, 186, 174.

Color Blindness Simulation

Color vision deficiency is a very complex topic, and I could not describe the different causes any better than Wikipedia does, so if you want to learn more, you should check out their [article about color blindness](#).

Dichromacy





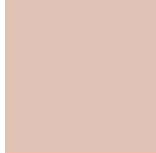
Tritanopia
252, 181, 195

Trichromacy



Original Color

250, 186, 174



Protanomaly

223, 202, 179



Deuteranomaly

237, 196, 173



Tritanomaly

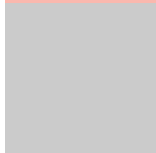
251, 182, 187

Monochromacy



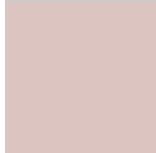
Original Color

250, 186, 174



Achromatopsia

203, 203, 203



Achromatomaly

220, 197, 192

CSS Examples

Text

The CSS property to change the color of the text to RYB 250, 186, 174 is called "color". The color property can be set on classes, ids or directly on the HTML element.

This example shows how text in the color rgb(250, 184, 174) looks like.

```
.text, #text, p{  
    color:rgb(250, 184, 174)  
}
```

If you want to add a text shadow in that color use the text-shadow property, you can generate a text shadow directly with our [CSS Text Shadow Generator](#).

Here you see how black text with a 4 pixel rgb(250, 184, 174) colored shadow looks like.

```
.shadow{ text-shadow: 4px 4px 2px rgb(250, 184, 174) }
```

Border

The CSS property to change the border of an element to RYB 250, 186, 174 is called "border". The border property can be set on classes, ids or directly on the HTML element.

This example shows the color as border, it can be applied via the CSS property "border" or "border-color".

```
.border, #border, table{ border:4px solid rgb(250, 184, 174) }
```

If only the border color should be changed use the property `border-color`.

```
.border{ border-color:rgb(250, 184, 174) }
```

If you want to add a box shadow in that color use:

Here you see how a box with a 4 pixel `rgb(250, 184, 174)` colored shadow looks like.

```
.boxshadow{ -moz-box-shadow:4px 4px 4px  
4px rgb(250, 184, 174); -webkit-box-  
shadow:4px 4px 4px 4px rgb(250, 184, 174);  
box-shadow:4px 4px 4px 4px rgb(250, 184,  
174) }
```

Background

The CSS property to change the background color of an element to RGB 250, 186, 174 is called "background". The background property can be set on classes, ids or directly on the HTML element.

```
.background, #background, body{  
background: rgb(250, 184, 174) }
```

If only the background color should be changed can be used:

```
.background{ background-color: rgb(250,  
184, 174) }
```

This example shows the color as background, it is applied via the CSS property "background".

To optimize and compress your CSS code, you can use our [online CSS compressor and optimizer](#) based on csstidy. If you want to create a linear or radial gradient as background or border, check our [CSS Gradient Generator](#).

Hey! You found this booklet interesting? Support Converting Colors with the new Membership Option!

The pro membership hides all ads, plus gives you double the colors in the color bucket, and more awesome pro features!

[Learn more, Memberships starting at \\$2.50/m!](#)

**Follow me
on Twitter!**

@ConvertingColor