

Converting Colors

`RYB(251, 193, 168)`

Have a look what the booklet for
RYB(251, 193, 168) contains.

RYB(251, 193, 168)	3
<i>Conversions</i>	4
<i>Details</i>	6
<i>Harmonies</i>	11
<i>Previews</i>	23
<i>Color Blindness Simulation</i>	26
<i>CSS Examples</i>	29

Color

R_YB(251, 193, 168)

Conversions

Conversions Part 1

Format	Color
Hex	FBBBA8
RGB	251, 187, 168
RGB Percent	98%, 73%, 66%
CMY	0.0157, 0.2658, 0.3412
CMYK	0.00, 0.25, 0.33, 0.02
HSL	14°, 91%, 82%
HSV	14°, 33%, 98%
XYZ	64.6671, 58.9675, 45.0193
YIQ	203.9700, 44.2430, 7.6590

Conversions

Conversions Part 2

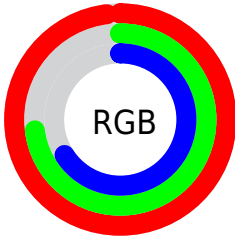
Format	Color
R _Y B	251, 193, 168
Decimal	16497576
CIE Lab	81.27, 20.48, 18.72
CIE LCh	81, 27.744, 42.425
Yxy	58.9675, 0.3834, 0.3496
Android (android.graphics.Color)	4294687656 (0xFFFBBA8)
YUV	203.9700, -17.7332, 41.2453
Hunter-Lab	76.7903, 15.9365, 18.9936

Details

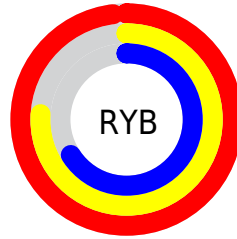
The RYB color **251, 193, 168** is a light color, and the websafe version is hex **FFCCCC**. A complement of this color would be **168, 204, 251**, and the grayscale version is **204, 204, 204**.

A 20% lighter version of the original color is **242, 255, 223**, and **193, 139, 116** is the 20% darker color. If you saturate the color by 10%, you get **251, 176, 143**, and if you desaturate by 10%, it is **251, 211, 193**.

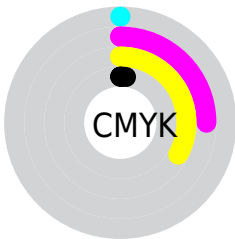
Distribution



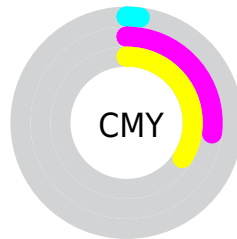
- Red (98%)
- Green (73%)
- Blue (66%)



- Red (98%)
- Yellow (76%)
- Blue (66%)



- Cyan (0%)
- Magenta (25%)
- Yellow (33%)
- Black (2%)





- Cyan (2%)
- Magenta (27%)
- Yellow (34%)

Brightness & Saturation Gradients


These gradients show how the RYB color 251, 193, 168 changes by changing the brightness by 10 percent. The first figure shows a shift by +10% for each color and the second figure -10%.

Similar to the brightness gradients but the following saturation gradients show a change of the RYB color 251, 193, 168 by changing the saturation by 10% instead.

 251, 193, 168

 251, 193, 168

255, 255, 255

 222, 165, 142

 240, 255, 223

 193, 139, 116

252, 255, 252

 165, 113, 91

 137, 89, 68

 110, 65, 45

 84, 42, 24

 60, 22, 0

 37, 0, 0

 0, 0, 0

■ 251, 193, 168

■ 251, 193, 168

■ 251, 176, 143

■ 251, 211, 193

■ 251, 158, 118

■ 251, 229, 218

■ 251, 140, 93

■ 251, 246, 243

■ 251, 123, 68

■ 251, 253, 255

■ 251, 106, 42

■ 251, 87, 17

■ 251, 75, 0

Harmonies

Analogous

The Analogous color harmony consists of three colors that are next to each other on the color wheel.



255, 183, 192



251, 193, 168



231, 235, 153

Triad

The Triadic color harmony groups three colors that are evenly spaced from another and form a triangle on the color wheel.



251, 193, 168



152, 193, 215



185, 198, 252

Complementary

The Complementary color scheme is a pair of colors which are on the opposite of each other on the color wheel.



251, 193, 168



168, 204, 251

Split Complementary

Split-complementary colors differ from the complementary color scheme. The scheme consists of three colors, the original color and two neighbors of the complement color.



150, 187, 251



251, 193, 168



130, 175, 217

Square

The Square scheme is like the rectangle color scheme, but the four colors are evenly spaced on the color wheel.



251, 193, 168



163, 211, 193



128, 176, 236



219, 192, 240

Rectangle

The Rectangle color scheme consists of four colors that form a rectangle on the color wheel.



251, 193, 168



174, 219, 150



128, 176, 236



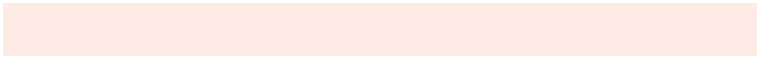
173, 195, 253

Sweetspot

The Sweet Spot groups the original color and five complimentary colors.



251, 193, 168



255, 236, 230



251, 168, 233



128, 117, 112



0, 0, 0



128, 128, 128

Same Dimension

The Same Dimension uses a secret algorithm to generate beautiful new colors.



251, 193, 168



255, 184, 153



202, 251, 168



125, 116, 112



189, 57, 0



61, 18, 0

Inverse Universe

The Inverse Universe completely reimagines the original color for something new.



168, 204, 251



153, 197, 255



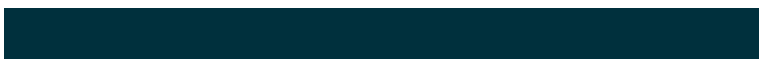
168, 187, 251



112, 118, 125



0, 82, 189



0, 27, 61

Previews

White Background



This preview shows how the RYB color 251, 193, 168 looks on a white background.

Color Contrast Check

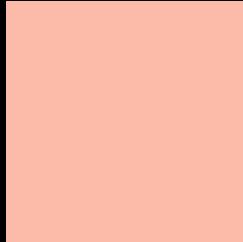
Large Text (above 18pt) WCAG AA × Fail

Any Text WCAG AA × Fail

Large Text (above 18pt) WCAG AAA × Fail

Any Text WCAG AAA × Fail

Black Background



This preview shows how the RYB color 251, 193, 168 looks on a black background.

Color Contrast Check

Large Text (above 18pt) WCAG AA ✓ Pass

Any Text WCAG AA ✓ Pass

Large Text (above 18pt) WCAG AAA ✓ Pass

Any Text WCAG AAA ✓ Pass

If you want to check with other color combinations, try the [Color Contrast Checker](#).

RYB 251, 193, 168 Background



This preview shows how black text looks on a background with the RYB color 251, 193, 168.

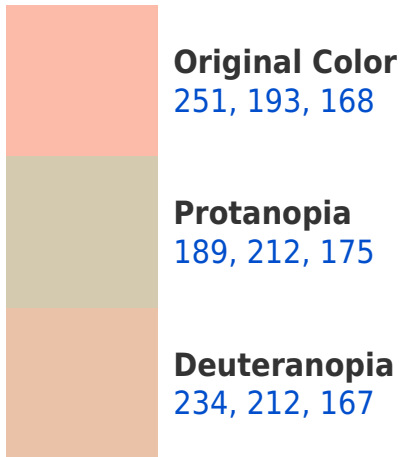



This preview shows how white text looks on a background with the RYB color 251, 193, 168.

Color Blindness Simulation

Color vision deficiency is a very complex topic, and I could not describe the different causes any better than Wikipedia does, so if you want to learn more, you should check out their [article about color blindness](#).

Dichromacy





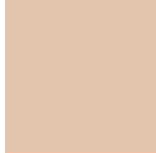
Tritanopia
254, 183, 197

Trichromacy



Original Color

251, 193, 168



Protanomaly

226, 219, 172



Deuteranomaly

240, 205, 167



Tritanomaly

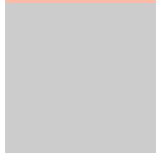
253, 185, 186

Monochromacy



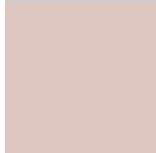
Original Color

251, 193, 168



Achromatopsia

204, 204, 204



Achromatomaly

221, 200, 191

CSS Examples

Text

The CSS property to change the color of the text to RYB 251, 193, 168 is called "color". The color property can be set on classes, ids or directly on the HTML element.

This example shows how text in the color `rgb(251, 187, 168)` looks like.

```
.text, #text, p{  
    color:rgb(251, 187, 168)  
}
```

If you want to add a text shadow in that color use the text-shadow property, you can generate a text shadow directly with our [CSS Text Shadow Generator](#).

Here you see how black text with a 4 pixel rgb(251, 187, 168) colored shadow looks like.

```
.shadow{ text-shadow: 4px 4px 2px rgb(251, 187, 168) }
```

Border

The CSS property to change the border of an element to RYB 251, 193, 168 is called "border". The border property can be set on classes, ids or directly on the HTML element.

This example shows the color as border, it can be applied via the CSS property "border" or "border-color".

```
.border, #border, table{ border:4px solid rgb(251, 187, 168) }
```

If only the border color should be changed use the property `border-color`.

```
.border{ border-color:rgb(251, 187, 168) }
```

If you want to add a box shadow in that color use:

Here you see how a box with a 4 pixel `rgb(251, 187, 168)` colored shadow looks like.

```
.boxshadow{ -moz-box-shadow:4px 4px 4px  
4px rgb(251, 187, 168); -webkit-box-  
shadow:4px 4px 4px 4px rgb(251, 187, 168);  
box-shadow:4px 4px 4px 4px rgb(251, 187,  
168) }
```

Background

The CSS property to change the background color of an element to RYB 251, 193, 168 is called "background". The background property can be set on classes, ids or directly on the HTML element.

```
.background, #background, body{  
background: rgb(251, 187, 168) }
```

If only the background color should be changed can be used:

```
.background{ background-color: rgb(251,  
187, 168) }
```

This example shows the color as background, it is applied via the CSS property "background".

To optimize and compress your CSS code, you can use our [online CSS compressor and optimizer](#) based on csstidy. If you want to create a linear or radial gradient as background or border, check our [CSS Gradient Generator](#).

Hey! You found this booklet interesting? Support Converting Colors with the new Membership Option!

The pro membership hides all ads, plus gives you double the colors in the color bucket, and more awesome pro features!

[Learn more, Memberships starting at \\$2.50/m!](#)

**Follow me
on Twitter!**

@ConvertingColor