

Converting Colors

`RYB(252, 173, 144)`

Have a look what the booklet for
RYB(252, 173, 144) contains.

RYB(252, 173, 144)	3
<i>Conversions</i>	4
<i>Details</i>	6
<i>Harmonies</i>	11
<i>Previews</i>	23
<i>Color Blindness Simulation</i>	26
<i>CSS Examples</i>	29

Color

R_YB(252, 173, 144)

Conversions

Conversions Part 1

Format	Color
Hex	FCA790
RGB	252, 167, 144
RGB Percent	99%, 65%, 56%
CMY	0.0118, 0.3456, 0.4353
CMYK	0.00, 0.34, 0.43, 0.01
HSL	13°, 95%, 78%
HSV	13°, 43%, 99%
XYZ	58.9722, 50.2957, 32.9854
YIQ	189.7930, 58.0430, 10.8670

Conversions

Conversions Part 2

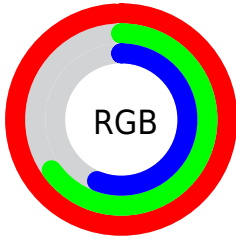
Format	Color
R _Y B	252, 173, 144
Decimal	16557968
CIE Lab	76.25, 28.82, 24.73
CIE LCh	76, 37.978, 40.628
Yxy	50.2957, 0.4146, 0.3536
Android (android.graphics.Color)	4294748048 (0xFFFC A790)
YUV	189.7930, -22.5759, 54.5555
Hunter-Lab	70.9195, 24.3205, 22.0672

Details

The RYB color **252, 173, 144** is a light color, and the websafe version is hex **FF9999**. A complement of this color would be **144, 192, 252**, and the grayscale version is **190, 190, 190**.

A 20% lighter version of the original color is **255, 243, 198**, and **193, 120, 93** is the 20% darker color. If you saturate the color by 10%, you get **252, 154, 119**, and if you desaturate by 10%, it is **252, 192, 169**.

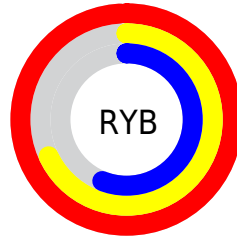
Distribution



Red (99%)

Green (65%)

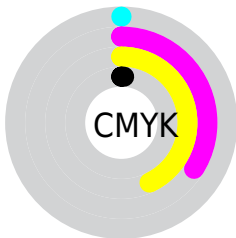
Blue (56%)



Red (99%)

Yellow (68%)

Blue (56%)

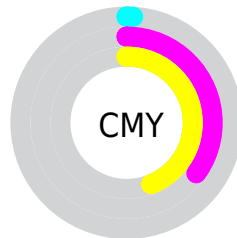


Cyan (0%)

Magenta (34%)

Yellow (43%)

Black (1%)



Cyan (1%)


Magenta (35%)


Yellow (44%)

Brightness & Saturation Gradients


These gradients show how the RYB color 252, 173, 144 changes by changing the brightness by 10 percent. The first figure shows a shift by +10% for each color and the second figure -10%.

Similar to the brightness gradients but the following saturation gradients show a change of the RYB color 252, 173, 144 by changing the saturation by 10% instead.

 252, 173, 144

 252, 173, 144

255, 255, 255

 222, 146, 118

 255, 243, 198


 193, 120, 93

 231, 255, 226

 164, 94, 70

 136, 70, 47

 108, 44, 26

 81, 22, 0

 54, 0, 0

 25, 0, 1

 0, 0, 0

■ 252, 173, 144

■ 252, 173, 144

■ 252, 154, 119

■ 252, 192, 169

■ 252, 136, 94

■ 252, 211, 194

■ 252, 117, 68

■ 252, 227, 220

■ 252, 99, 43

■ 252, 246, 245

■ 252, 82, 18

■ 252, 254, 255

■ 252, 67, 0

Harmonies

Analogous

The Analogous color harmony consists of three colors that are next to each other on the color wheel.



255, 161, 177



252, 173, 144



225, 231, 122

Triad

The Triadic color harmony groups three colors that are evenly spaced from another and form a triangle on the color wheel.



252, 173, 144



118, 175, 205



159, 181, 255

Complementary

The Complementary color scheme is a pair of colors which are on the opposite of each other on the color wheel.



252, 173, 144



144, 192, 252

Split Complementary

Split-complementary colors differ from the complementary color scheme. The scheme consists of three colors, the original color and two neighbors of the complement color.



101, 160, 253



252, 173, 144



74, 142, 207

Square

The Square scheme is like the rectangle color scheme, but the four colors are evenly spaced on the color wheel.



252, 173, 144



134, 199, 172



58, 138, 233



208, 174, 241

Rectangle

The Rectangle color scheme consists of four colors that form a rectangle on the color wheel.



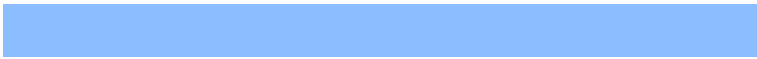
252, 173, 144



151, 211, 117



58, 138, 233



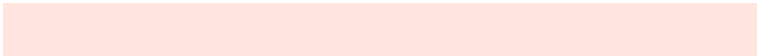
140, 175, 255

Sweetspot

The Sweet Spot groups the original color and five complimentary colors.



252, 173, 144



255, 231, 222



252, 144, 230



128, 112, 107



0, 0, 0



128, 128, 128

Same Dimension

The Same Dimension uses a secret algorithm to generate beautiful new colors.



252, 173, 144



255, 159, 125



189, 252, 144



125, 116, 112



189, 51, 0



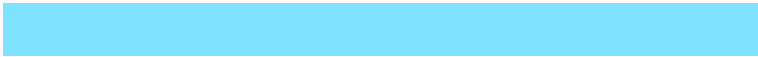
61, 17, 0

Inverse Universe

The Inverse Universe completely reimagines the original color for something new.



144, 192, 252



125, 182, 255



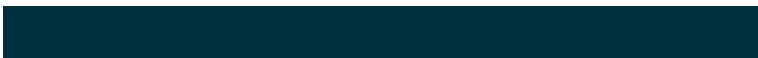
144, 169, 252



112, 118, 125



0, 83, 189



0, 27, 61

Previews

White Background



This preview shows how the RYB color 252, 173, 144 looks on a white background.

Color Contrast Check

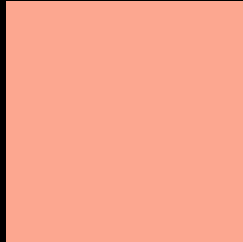
Large Text (above 18pt) WCAG AA × Fail

Any Text WCAG AA × Fail

Large Text (above 18pt) WCAG AAA × Fail

Any Text WCAG AAA × Fail

Black Background



This preview shows how the RYB color 252, 173, 144 looks on a black background.

Color Contrast Check

Large Text (above 18pt) WCAG AA ✓ Pass

Any Text WCAG AA ✓ Pass

Large Text (above 18pt) WCAG AAA ✓ Pass

Any Text WCAG AAA ✓ Pass

If you want to check with other color combinations, try the [Color Contrast Checker](#).

RYB 252, 173, 144 Background



This preview shows how black text looks on a background with the RYB color 252, 173, 144.



This preview shows how white text looks on a background with the RYB color 252, 173, 144.

Color Blindness Simulation

Color vision deficiency is a very complex topic, and I could not describe the different causes any better than Wikipedia does, so if you want to learn more, you should check out their [article about color blindness](#).


Dichromacy



Original Color
252, 173, 144

Protanopia
170, 200, 154

Deuteranopia
222, 220, 141



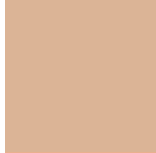
Tritanopia
255, 162, 175

Trichromacy



Original Color

252, 173, 144



Protanomaly

219, 203, 150



Deuteranomaly

233, 196, 142



Tritanomaly

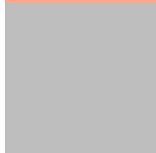
254, 164, 164

Monochromacy



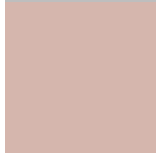
Original Color

252, 173, 144



Achromatopsia

190, 190, 190



Achromatomaly

213, 185, 173

CSS Examples

Text

The CSS property to change the color of the text to RYB 252, 173, 144 is called "color". The color property can be set on classes, ids or directly on the HTML element.

This example shows how text in the color `rgb(252, 167, 144)` looks like.

```
.text, #text, p{  
    color:rgb(252, 167, 144)  
}
```

If you want to add a text shadow in that color use the text-shadow property, you can generate a text shadow directly with our [CSS Text Shadow Generator](#).

Here you see how black text with a 4 pixel rgb(252, 167, 144) colored shadow looks like.

```
.shadow{ text-shadow: 4px 4px 2px rgb(252, 167, 144) }
```

Border

The CSS property to change the border of an element to RYB 252, 173, 144 is called "border". The border property can be set on classes, ids or directly on the HTML element.

This example shows the color as border, it can be applied via the CSS property "border" or "border-color".

```
.border, #border, table{ border:4px solid rgb(252, 167, 144) }
```

If only the border color should be changed use the property `border-color`.

```
.border{ border-color:rgb(252, 167, 144) }
```

If you want to add a box shadow in that color use:

Here you see how a box with a 4 pixel `rgb(252, 167, 144)` colored shadow looks like.

```
.boxshadow{ -moz-box-shadow:4px 4px 4px  
4px rgb(252, 167, 144); -webkit-box-  
shadow:4px 4px 4px 4px rgb(252, 167, 144);  
box-shadow:4px 4px 4px 4px rgb(252, 167,  
144) }
```

Background

The CSS property to change the background color of an element to RYB 252, 173, 144 is called "background". The background property can be set on classes, ids or directly on the HTML element.

```
.background, #background, body{  
background: rgb(252, 167, 144) }
```

If only the background color should be changed can be used:

```
.background{ background-color: rgb(252,  
167, 144) }
```

This example shows the color as background, it is applied via the CSS property "background".

To optimize and compress your CSS code, you can use our [online CSS compressor and optimizer](#) based on csstidy. If you want to create a linear or radial gradient as background or border, check our [CSS Gradient Generator](#).

Hey! You found this booklet interesting? Support Converting Colors with the new Membership Option!

The pro membership hides all ads, plus gives you double the colors in the color bucket, and more awesome pro features!

[Learn more, Memberships starting at \\$2.50/m!](#)

**Follow me
on Twitter!**

@ConvertingColor