

Converting Colors

`RYB(252, 88, 136)`

Have a look what the booklet for
RYB(252, 88, 136) contains.

RYB(252, 88, 136)	3
<i>Conversions</i>	4
<i>Details</i>	6
<i>Harmonies</i>	11
<i>Previews</i>	23
<i>Color Blindness Simulation</i>	26
<i>CSS Examples</i>	29

Color

`RYB(252, 88, 136)`

Conversions

Conversions Part 1

Format	Color
Hex	FC5888
RGB	252, 88, 136
RGB Percent	99%, 35%, 53%
CMY	0.0118, 0.6549, 0.4667
CMYK	0.00, 0.65, 0.46, 0.01
HSL	342°, 96%, 67%
HSV	342°, 65%, 99%
XYZ	48.0785, 29.4525, 26.4434
YIQ	142.5080, 82.3360, 49.6960

Conversions

Conversions Part 2

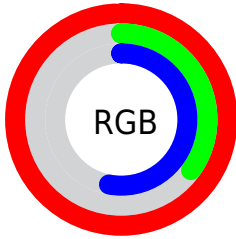
Format	Color
R_{YB}	252, 88, 136
Decimal	16537736
CIE _{Lab}	61.18, 65.72, 8.29
CIE _{LCh}	61, 66.242, 7.186
Yxy	29.4525, 0.4624, 0.2833
Android (android.graphics.Color)	4294727816 (0xFFFC5888)
YUV	142.5080, -3.2084, 96.0245
Hunter-Lab	54.2701, 63.1625, 9.0997

Details

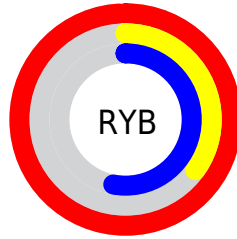
The RYB color **252, 88, 136** is a light color, and the websafe version is hex **FF6699**. The color can be described as light muted rose. A complement of this color would be **88, 184, 252**, and the grayscale version is **142, 142, 142**.

A 20% lighter version of the original color is **255, 146, 189**, and **190, 15, 87** is the 20% darker color. If you saturate the color by 10%, you get **252, 63, 118**, and if you desaturate by 10%, it is **252, 113, 154**.

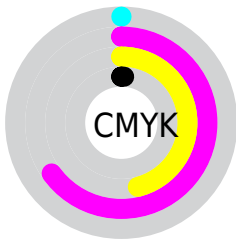
Distribution



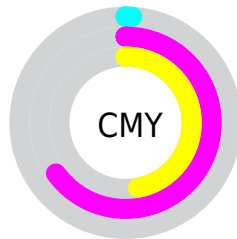
- Red (99%)
- Green (35%)
- Blue (53%)



- Red (99%)
- Yellow (35%)
- Blue (53%)



- Cyan (0%)
- Magenta (65%)
- Yellow (46%)
- Black (1%)



- Cyan (1%)
- Magenta (65%)
- Yellow (47%)

Brightness & Saturation Gradients

These gradients show how the RYB color 252, 88, 136 changes by changing the brightness by 10 percent. The first figure shows a shift by +10% for each color and the second figure -10%.

Similar to the brightness gradients but the following saturation gradients show a change of the RYB color 252, 88, 136 by changing the saturation by 10% instead.



252, 88, 136



252, 88, 136

255, 255, 255



221, 57, 111



255, 146, 189



190, 15, 87



255, 175, 217



160, 0, 64



255, 204, 245



130, 0, 42



255, 234, 255



100, 0, 22



72, 0, 3



41, 0, 1



0, 0, 0



252, 88, 136



252, 88, 136

■ 252, 63, 118

■ 252, 113, 154

■ 252, 38, 100

■ 252, 138, 172

■ 252, 12, 83

■ 252, 164, 189

■ 252, 0, 74

■ 252, 189, 207

■ 252, 214, 225

■ 252, 239, 243

■ 252, 254, 255

Harmonies

Analogous

The Analogous color harmony consists of three colors that are next to each other on the color wheel.



229, 99, 194



252, 88, 136



244, 107, 80

Triad

The Triadic color harmony groups three colors that are evenly spaced from another and form a triangle on the color wheel.



252, 88, 136



44, 164, 107



0, 101, 255

Complementary

The Complementary color scheme is a pair of colors which are on the opposite of each other on the color wheel.



252, 88, 136



88, 184, 252

Split Complementary

Split-complementary colors differ from the complementary color scheme. The scheme consists of three colors, the original color and two neighbors of the complement color.



0, 96, 217



252, 88, 136



0, 109, 172

Square

The Square scheme is like the rectangle color scheme, but the four colors are evenly spaced on the color wheel.



252, 88, 136



15, 163, 0



0, 91, 175



0, 94, 255

Rectangle

The Rectangle color scheme consists of four colors that form a rectangle on the color wheel.



252, 88, 136



225, 172, 46



0, 91, 175



0, 100, 246

Sweetspot

The Sweet Spot groups the original color and five complimentary colors.



252, 88, 136



255, 204, 219



203, 88, 252



128, 97, 106



0, 0, 0



128, 128, 128

Same Dimension

The Same Dimension uses a secret algorithm to generate beautiful new colors.



252, 88, 136



255, 56, 114



252, 129, 88



125, 112, 116



189, 0, 55



61, 0, 18

Inverse Universe

The Inverse Universe completely reimagines the original color for something new.



252, 88, 136



255, 56, 114



88, 161, 252



125, 112, 116



189, 0, 55



61, 0, 18

Previews

White Background



This preview shows how the RYB color 252, 88, 136 looks on a white background.

Color Contrast Check

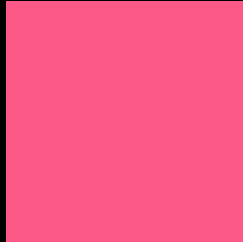
Large Text (above 18pt) WCAG AA ✓ Pass

Any Text WCAG AA × Fail

Large Text (above 18pt) WCAG AAA × Fail

Any Text WCAG AAA × Fail

Black Background



This preview shows how the RYB color 252, 88, 136 looks on a black background.

Color Contrast Check

Large Text (above 18pt) WCAG AA ✓ Pass

Any Text WCAG AA ✓ Pass

Large Text (above 18pt) WCAG AAA ✓ Pass

Any Text WCAG AAA × Fail

If you want to check with other color combinations, try the [Color Contrast Checker](#).

RYB 252, 88, 136 Background



This preview shows how black text looks on a background with the RYB color 252, 88, 136.



This preview shows how white text looks on a background with the RYB color 252, 88, 136.

Color Blindness Simulation

Color vision deficiency is a very complex topic, and I could not describe the different causes any better than Wikipedia does, so if you want to learn more, you should check out their [article about color blindness](#).


Dichromacy



Original Color
252, 88, 136

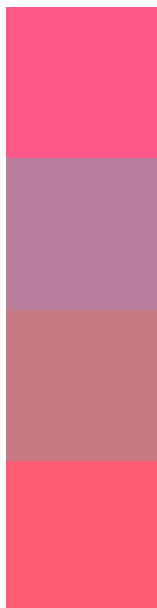
Protanopia
144, 147, 169

Deuteranopia
169, 149, 128



Tritanopia
250, 95, 101

Trichromacy



Original Color

252, 88, 136

Protanomaly

183, 126, 157

Deuteranomaly

199, 122, 131

Tritanomaly

251, 92, 114

Monochromacy



Original Color

252, 88, 136

Achromatopsia

143, 143, 143

Achromatomaly

183, 123, 140

CSS Examples

Text

The CSS property to change the color of the text to RYB 252, 88, 136 is called "color". The color property can be set on classes, ids or directly on the HTML element.

This example shows how text in the color rgb(252, 88, 136) looks like.

```
.text, #text, p{  
    color:rgb(252, 88, 136)  
}
```

If you want to add a text shadow in that color use the text-shadow property, you can generate a text shadow directly with our [CSS Text Shadow Generator](#).

Here you see how black text with a 4 pixel rgb(252, 88, 136) colored shadow looks like.

```
.shadow{ text-shadow: 4px 4px 2px rgb(252, 88, 136) }
```

Border

The CSS property to change the border of an element to RYB 252, 88, 136 is called "border". The border property can be set on classes, ids or directly on the HTML element.

This example shows the color as border, it can be applied via the CSS property "border" or "border-color".

```
.border, #border, table{ border:4px solid rgb(252, 88, 136) }
```

If only the border color should be changed use the property `border-color`.

```
.border{ border-color:rgb(252, 88, 136) }
```

If you want to add a box shadow in that color use:

Here you see how a box with a 4 pixel `rgb(252, 88, 136)` colored shadow looks like.

```
.boxshadow{ -moz-box-shadow:4px 4px 4px  
4px rgb(252, 88, 136); -webkit-box-  
shadow:4px 4px 4px 4px rgb(252, 88, 136);  
box-shadow:4px 4px 4px 4px rgb(252, 88,  
136) }
```

Background

The CSS property to change the background color of an element to RYB 252, 88, 136 is called "background". The background property can be set on classes, ids or directly on the HTML element.

```
.background, #background, body{  
background: rgb(252, 88, 136) }
```

If only the background color should be changed can be used:

```
.background{ background-color: rgb(252, 88,  
136) }
```

This example shows the color as background, it is applied via the CSS property "background".

To optimize and compress your CSS code, you can use our [online CSS compressor and optimizer](#) based on csstidy. If you want to create a linear or radial gradient as background or border, check our [CSS Gradient Generator](#).

Hey! You found this booklet interesting? Support Converting Colors with the new Membership Option!

The pro membership hides all ads, plus gives you double the colors in the color bucket, and more awesome pro features!

[Learn more, Memberships starting at \\$2.50/m!](#)

**Follow me
on Twitter!**

@ConvertingColor