

Converting Colors

`RYB(254, 145, 103)`

Have a look what the booklet for
RYB(254, 145, 103) contains.

RYB(254, 145, 103)	3
<i>Conversions</i>	4
<i>Details</i>	6
<i>Harmonies</i>	11
<i>Previews</i>	23
<i>Color Blindness Simulation</i>	26
<i>CSS Examples</i>	29

Color

R_YB(254, 145, 103)

Conversions

Conversions Part 1

Format	Color
Hex	FE8867
RGB	254, 136, 103
RGB Percent	100%, 53%, 40%
CMY	0.0039, 0.4672, 0.5961
CMYK	0.00, 0.47, 0.59, 0.00
HSL	13°, 99%, 70%
HSV	13°, 59%, 100%
XYZ	52.1057, 39.6190, 17.7329
YIQ	167.5200, 80.9210, 14.7530

Conversions

Conversions Part 2

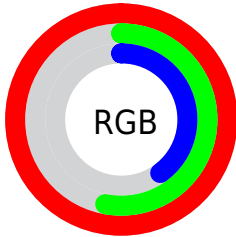
Format	Color
R_{YB}	254, 145, 103
Decimal	16681063
CIE _{Lab}	69.20, 41.99, 37.67
CIE _{LCh}	69, 56.409, 41.900
Yxy	39.6190, 0.4760, 0.3620
Android (android.graphics.Color)	4294871143 (0xFFFE8867)
YUV	167.5200, -31.8084, 75.8430
Hunter-Lab	62.9437, 37.6136, 27.3570

Details

The RYB color **254, 145, 103** is a light color, and the websafe version is hex **FF9966**. A complement of this color would be **103, 169, 254**, and the grayscale version is **168, 168, 168**.

A 20% lighter version of the original color is **255, 211, 155**, and **192, 90, 55** is the 20% darker color. If you saturate the color by 10%, you get **254, 126, 78**, and if you desaturate by 10%, it is **254, 164, 128**.

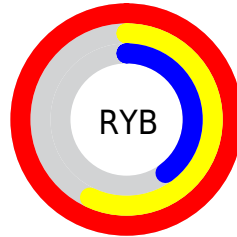
Distribution



Red (100%)

Green (53%)

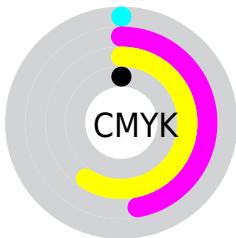
Blue (40%)



Red (100%)

Yellow (57%)

Blue (40%)

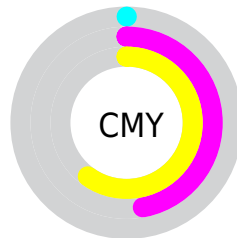


Cyan (0%)

Magenta (47%)

Yellow (59%)

Black (0%)



Cyan (0%)

Magenta (47%)

Yellow (60%)

Brightness & Saturation Gradients

These gradients show how the RYB color 254, 145, 103 changes by changing the brightness by 10 percent. The first figure shows a shift by +10% for each color and the second figure -10%.

Similar to the brightness gradients but the following saturation gradients show a change of the RYB color 254, 145, 103 by changing the saturation by 10% instead.

 254, 145, 103

255, 255, 255

 255, 211, 155

 253, 255, 182

 217, 255, 209

 238, 255, 238

 254, 145, 103

 223, 117, 78

 192, 90, 55

 162, 65, 32

 132, 35, 10

 103, 0, 0

 74, 0, 0

 49, 0, 2

 0, 0, 0

 254, 145, 103

 254, 145, 103

■ 254, 126, 78

■ 254, 164, 128

■ 254, 108, 52

■ 254, 182, 154

■ 254, 89, 27

■ 254, 199, 179

■ 254, 71, 1

■ 254, 218, 205

■ 254, 70, 0

■ 254, 236, 230

254, 255, 255

Harmonies

Analogous

The Analogous color harmony consists of three colors that are next to each other on the color wheel.



255, 124, 150



254, 145, 103



191, 223, 69

Triad

The Triadic color harmony groups three colors that are evenly spaced from another and form a triangle on the color wheel.



254, 145, 103



13, 119, 192



115, 153, 255

Complementary

The Complementary color scheme is a pair of colors which are on the opposite of each other on the color wheel.



254, 145, 103



103, 169, 254

Split Complementary

Split-complementary colors differ from the complementary color scheme. The scheme consists of three colors, the original color and two neighbors of the complement color.



0, 107, 255



254, 145, 103



0, 99, 194

Square

The Square scheme is like the rectangle color scheme, but the four colors are evenly spaced on the color wheel.



254, 145, 103



89, 185, 152



0, 106, 236



199, 147, 245

Rectangle

The Rectangle color scheme consists of four colors that form a rectangle on the color wheel.



254, 145, 103



95, 194, 61



0, 106, 236



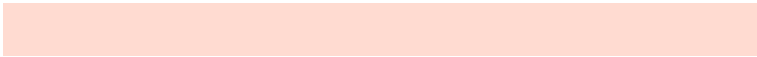
69, 136, 255

Sweetspot

The Sweet Spot groups the original color and five complimentary colors.



254, 145, 103



255, 222, 209



254, 103, 221



128, 108, 99



0, 0, 0



128, 128, 128

Same Dimension

The Same Dimension uses a secret algorithm to generate beautiful new colors.



254, 145, 103



255, 124, 74



163, 254, 103



128, 119, 115



191, 54, 0



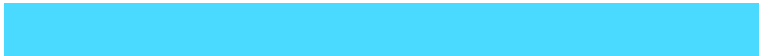
64, 18, 0

Inverse Universe

The Inverse Universe completely reimagines the original color for something new.



103, 169, 254



74, 154, 255



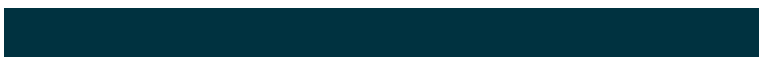
103, 136, 254



115, 121, 128



0, 84, 191



0, 28, 64

Previews

White Background



This preview shows how the RYB color 254, 145, 103 looks on a white background.

Color Contrast Check

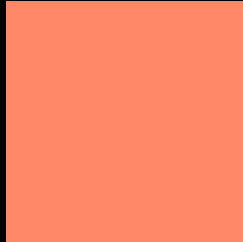
Large Text (above 18pt) WCAG AA × Fail

Any Text WCAG AA × Fail

Large Text (above 18pt) WCAG AAA × Fail

Any Text WCAG AAA × Fail

Black Background



This preview shows how the RYB color 254, 145, 103 looks on a black background.

Color Contrast Check

Large Text (above 18pt) WCAG AA ✓ Pass

Any Text WCAG AA ✓ Pass

Large Text (above 18pt) WCAG AAA ✓ Pass

Any Text WCAG AAA ✓ Pass

If you want to check with other color combinations, try the [Color Contrast Checker](#).

RYB 254, 145, 103 Background



This preview shows how black text looks on a background with the RYB color 254, 145, 103.



This preview shows how white text looks on a background with the RYB color 254, 145, 103.

Color Blindness Simulation

Color vision deficiency is a very complex topic, and I could not describe the different causes any better than Wikipedia does, so if you want to learn more, you should check out their [article about color blindness](#).


Dichromacy



Original Color
254, 145, 103

Protanopia
134, 183, 116

Deuteranopia
172, 206, 98



Tritanopia
255, 132, 141

Trichromacy



Original Color

254, 145, 103



Protanomaly

209, 198, 111



Deuteranomaly

223, 190, 100



Tritanomaly

255, 133, 127

Monochromacy



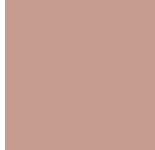
Original Color

254, 145, 103



Achromatopsia

167, 167, 167



Achromatomaly

199, 159, 144

CSS Examples

Text

The CSS property to change the color of the text to RGB 254, 136, 103 is called "color". The color property can be set on classes, ids or directly on the HTML element.

This example shows how text in the color rgb(254, 136, 103) looks like.

```
.text, #text, p{  
    color:rgb(254, 136, 103)  
}
```

If you want to add a text shadow in that color use the text-shadow property, you can generate a text shadow directly with our [CSS Text Shadow Generator](#).

Here you see how black text with a 4 pixel rgb(254, 136, 103) colored shadow looks like.

```
.shadow{ text-shadow: 4px 4px 2px rgb(254, 136, 103) }
```

Border

The CSS property to change the border of an element to RYB 254, 145, 103 is called "border". The border property can be set on classes, ids or directly on the HTML element.

This example shows the color as border, it can be applied via the CSS property "border" or "border-color".

```
.border, #border, table{ border:4px solid rgb(254, 136, 103) }
```

If only the border color should be changed use the property `border-color`.

```
.border{ border-color:rgb(254, 136, 103) }
```

If you want to add a box shadow in that color use:

Here you see how a box with a 4 pixel `rgb(254, 136, 103)` colored shadow looks like.

```
.boxshadow{ -moz-box-shadow:4px 4px 4px  
4px rgb(254, 136, 103); -webkit-box-  
shadow:4px 4px 4px 4px rgb(254, 136, 103);  
box-shadow:4px 4px 4px 4px rgb(254, 136,  
103) }
```

Background

The CSS property to change the background color of an element to RYB 254, 145, 103 is called "background". The background property can be set on classes, ids or directly on the HTML element.

```
.background, #background, body{  
background: rgb(254, 136, 103) }
```

If only the background color should be changed can be used:

```
.background{ background-color: rgb(254,  
136, 103) }
```

This example shows the color as background, it is applied via the CSS property "background".

To optimize and compress your CSS code, you can use our [online CSS compressor and optimizer](#) based on csstidy. If you want to create a linear or radial gradient as background or border, check our [CSS Gradient Generator](#).

Hey! You found this booklet interesting? Support Converting Colors with the new Membership Option!

The pro membership hides all ads, plus gives you double the colors in the color bucket, and more awesome pro features!

[Learn more, Memberships starting at \\$2.50/m!](#)

**Follow me
on Twitter!**

@ConvertingColor