

Converting Colors

`RYB(254, 173, 172)`

Have a look what the booklet for
RYB(254, 173, 172) contains.

RYB(254, 173, 172)	3
<i>Conversions</i>	4
<i>Details</i>	6
<i>Harmonies</i>	11
<i>Previews</i>	23
<i>Color Blindness Simulation</i>	26
<i>CSS Examples</i>	29

Color

R_YB(254, 173, 172)

Conversions

Conversions Part 1

Format	Color
Hex	FEADAC
RGB	254, 173, 172
RGB Percent	100%, 68%, 67%
CMY	0.0039, 0.3216, 0.3255
CMYK	0.00, 0.32, 0.32, 0.00
HSL	1°, 98%, 84%
HSV	1°, 32%, 100%
XYZ	63.2607, 53.9319, 46.1054
YIQ	197.1050, 48.5970, 16.8610

Conversions

Conversions Part 2

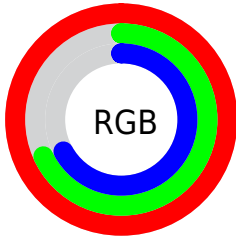
Format	Color
RYB	254, 173, 172
Decimal	16690604
CIELab	78.42, 29.56, 12.61
CIELCh	78, 32.138, 23.105
Yxy	53.9319, 0.3874, 0.3303
Android (android.graphics.Color)	4294880684 (0xFFFEADAC)
YUV	197.1050, -12.3768, 49.8969
Hunter-Lab	73.4383, 25.2450, 14.1839

Details

The RYB color **254, 173, 172** is a light color, and the websafe version is hex **FF9999**. A complement of this color would be **172, 213, 254**, and the grayscale version is **197, 197, 197**.

A 20% lighter version of the original color is **255, 229, 227**, and **195, 120, 120** is the 20% darker color. If you saturate the color by 10%, you get **254, 148, 147**, and if you desaturate by 10%, it is **254, 198, 197**.

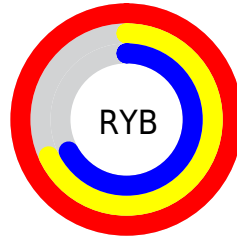
Distribution



Red (100%)

Green (68%)

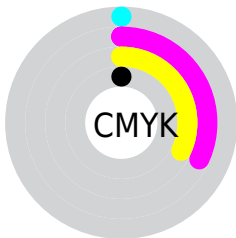
Blue (67%)



Red (100%)

Yellow (68%)

Blue (67%)

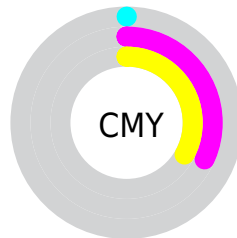


Cyan (0%)

Magenta (32%)

Yellow (32%)

Black (0%)



Cyan (0%)

Magenta (32%)

Yellow (33%)

Brightness & Saturation Gradients


These gradients show how the RYB color 254, 173, 172 changes by changing the brightness by 10 percent. The first figure shows a shift by +10% for each color and the second figure -10%.

Similar to the brightness gradients but the following saturation gradients show a change of the RYB color 254, 173, 172 by changing the saturation by 10% instead.

 254, 173, 172

 254, 173, 172

255, 255, 255

 224, 146, 145

 255, 229, 227

 195, 120, 120

 167, 94, 95

 139, 70, 71

 112, 46, 49

 85, 22, 28

 60, 0, 2

 36, 0, 1

 0, 0, 0

■ 254, 173, 172

■ 254, 173, 172

■ 254, 148, 147

■ 254, 198, 197

■ 254, 123, 121

■ 254, 223, 223

■ 254, 98, 96

■ 254, 248, 248

■ 254, 73, 70

254, 255, 255

■ 254, 48, 45

■ 254, 22, 20

■ 254, 3, 0

Harmonies

Analogous

The Analogous color harmony consists of three colors that are next to each other on the color wheel.



248, 172, 202



254, 173, 172



244, 197, 147

Triad

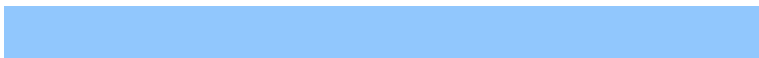
The Triadic color harmony groups three colors that are evenly spaced from another and form a triangle on the color wheel.



254, 173, 172



157, 206, 206



145, 181, 253

Complementary

The Complementary color scheme is a pair of colors which are on the opposite of each other on the color wheel.



254, 173, 172



172, 213, 254

Split Complementary

Split-complementary colors differ from the complementary color scheme. The scheme consists of three colors, the original color and two neighbors of the complement color.



109, 165, 241



254, 173, 172



123, 173, 210

Square

The Square scheme is like the rectangle color scheme, but the four colors are evenly spaced on the color wheel.



254, 173, 172



139, 199, 147



101, 157, 216



189, 189, 249

Rectangle

The Rectangle color scheme consists of four colors that form a rectangle on the color wheel.



254, 173, 172



221, 230, 137



101, 157, 216



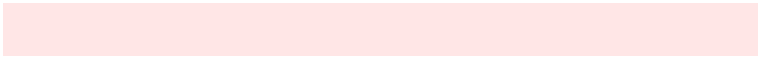
131, 175, 250

Sweetspot

The Sweet Spot groups the original color and five complimentary colors.



254, 173, 172



255, 230, 230



254, 172, 254



128, 112, 112



0, 0, 0



128, 128, 128

Same Dimension

The Same Dimension uses a secret algorithm to generate beautiful new colors.



254, 173, 172



255, 157, 156



254, 254, 172



128, 115, 115



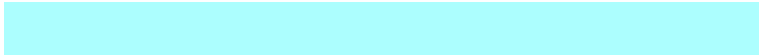
191, 2, 0



64, 1, 0

Inverse Universe

The Inverse Universe completely reimagines the original color for something new.



172, 213, 254



156, 205, 255



172, 199, 254



115, 121, 128



0, 95, 191



0, 32, 64

Previews

White Background



This preview shows how the RYB color 254, 173, 172 looks on a white background.

Color Contrast Check

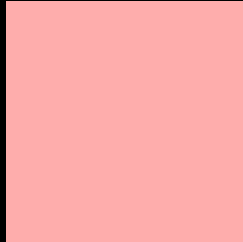
Large Text (above 18pt) WCAG AA × Fail

Any Text WCAG AA × Fail

Large Text (above 18pt) WCAG AAA × Fail

Any Text WCAG AAA × Fail

Black Background



This preview shows how the RYB color 254, 173, 172 looks on a black background.

Color Contrast Check

Large Text (above 18pt) WCAG AA ✓ Pass

Any Text WCAG AA ✓ Pass

Large Text (above 18pt) WCAG AAA ✓ Pass

Any Text WCAG AAA ✓ Pass

If you want to check with other color combinations, try the [Color Contrast Checker](#).

RYB 254, 173, 172 Background



This preview shows how black text looks on a background with the RYB color 254, 173, 172.



This preview shows how white text looks on a background with the RYB color 254, 173, 172.

Color Blindness Simulation

Color vision deficiency is a very complex topic, and I could not describe the different causes any better than Wikipedia does, so if you want to learn more, you should check out their [article about color blindness](#).

Dichromacy



Original Color
254, 173, 172

Protanopia
194, 201, 183

Deuteranopia
222, 196, 169



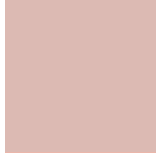
Tritanopia
255, 171, 184

Trichromacy



Original Color

254, 173, 172



Protanomaly

220, 187, 179



Deuteranomaly

234, 185, 170



Tritanomaly

255, 172, 180

Monochromacy



Original Color

254, 173, 172



Achromatopsia

197, 197, 197



Achromatomaly

218, 188, 188

CSS Examples

Text

The CSS property to change the color of the text to RYB 254, 173, 172 is called "color". The color property can be set on classes, ids or directly on the HTML element.

This example shows how text in the color rgb(254, 173, 172) looks like.

```
.text, #text, p{  
    color:rgb(254, 173, 172)  
}
```

If you want to add a text shadow in that color use the text-shadow property, you can generate a text shadow directly with our [CSS Text Shadow Generator](#).

Here you see how black text with a 4 pixel rgb(254, 173, 172) colored shadow looks like.

```
.shadow{ text-shadow: 4px 4px 2px rgb(254, 173, 172) }
```

Border

The CSS property to change the border of an element to RYB 254, 173, 172 is called "border". The border property can be set on classes, ids or directly on the HTML element.

This example shows the color as border, it can be applied via the CSS property "border" or "border-color".

```
.border, #border, table{ border:4px solid rgb(254, 173, 172) }
```

If only the border color should be changed use the property border-color.

```
.border{ border-color:rgb(254, 173, 172) }
```

If you want to add a box shadow in that color use:

Here you see how a box with a 4 pixel rgb(254, 173, 172) colored shadow looks like.

```
.boxshadow{ -moz-box-shadow:4px 4px 4px  
4px rgb(254, 173, 172); -webkit-box-  
shadow:4px 4px 4px 4px rgb(254, 173, 172);  
box-shadow:4px 4px 4px 4px rgb(254, 173,  
172) }
```

Background

The CSS property to change the background color of an element to RGB 254, 173, 172 is called "background". The background property can be set on classes, ids or directly on the HTML element.

```
.background, #background, body{  
background: rgb(254, 173, 172) }
```

If only the background color should be changed can be used:

```
.background{ background-color: rgb(254,  
173, 172) }
```

This example shows the color as background, it is applied via the CSS property "background".

To optimize and compress your CSS code, you can use our [online CSS compressor and optimizer](#) based on csstidy. If you want to create a linear or radial gradient as background or border, check our [CSS Gradient Generator](#).

Hey! You found this booklet interesting? Support Converting Colors with the new Membership Option!

The pro membership hides all ads, plus gives you double the colors in the color bucket, and more awesome pro features!

[Learn more, Memberships starting at \\$2.50/m!](#)

**Follow me
on Twitter!**

@ConvertingColor