

Converting Colors

`RYB(254, 188, 189)`

Have a look what the booklet for RYB(254, 188, 189) contains.

RYB(254, 188, 189)	3
<i>Conversions</i>	4
<i>Details</i>	6
<i>Harmonies</i>	11
<i>Previews</i>	23
<i>Color Blindness Simulation</i>	26
<i>CSS Examples</i>	29

Color

RYB(254, 188, 189)

Conversions

Conversions Part 1

Format	Color
Hex	FEBCBD
RGB	254, 188, 189
RGB Percent	100%, 74%, 74%
CMY	0.0039, 0.2627, 0.2588
CMYK	0.00, 0.26, 0.26, 0.00
HSL	359°, 97%, 87%
HSV	359°, 26%, 100%
XYZ	68.0416, 60.7114, 56.2764
YIQ	207.8480, 39.0150, 14.3030

Conversions

Conversions Part 2

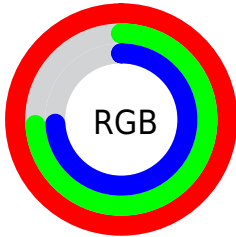
Format	Color
R _Y B	254, 188, 189
Decimal	16694461
CIE Lab	82.22, 23.91, 8.85
CIE LCh	82, 25.491, 20.308
Yxy	60.7114, 0.3677, 0.3281
Android (android.graphics.Color)	4294884541 (0xFFFEBCBD)
YUV	207.8480, -9.2921, 40.4753
Hunter-Lab	77.9175, 19.5197, 11.7197

Details

The RYB color **254, 188, 189** is a light color, and the websafe version is hex **FFCCCC**. A complement of this color would be **188, 221, 254**, and the grayscale version is **208, 208, 208**.

A 20% lighter version of the original color is **255, 245, 245**, and **196, 134, 136** is the 20% darker color. If you saturate the color by 10%, you get **254, 163, 164**, and if you desaturate by 10%, it is **254, 213, 214**.

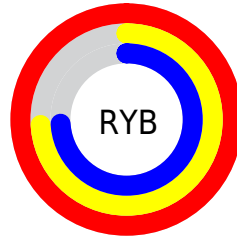
Distribution



Red (100%)

Green (74%)

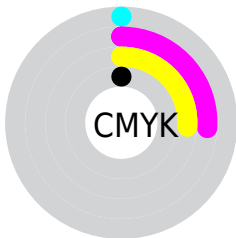
Blue (74%)



Red (100%)

Yellow (74%)

Blue (74%)

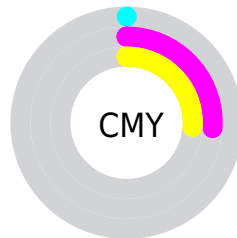


Cyan (0%)

Magenta (26%)

Yellow (26%)

Black (0%)



Cyan (0%)

Magenta (26%)

Yellow (26%)

Brightness & Saturation Gradients

These gradients show how the RYB color 254, 188, 189 changes by changing the brightness by 10 percent. The first figure shows a shift by +10% for each color and the second figure -10%.

Similar to the brightness gradients but the following saturation gradients show a change of the RYB color 254, 188, 189 by changing the saturation by 10% instead.

 254, 188, 189

255, 255, 255

 255, 245, 245


 254, 188, 189

 225, 161, 162

 196, 134, 136

 168, 109, 110

 141, 84, 86


 114, 60, 63

 88, 37, 41


 63, 15, 21

 42, 0, 0


 0, 0, 0

 254, 188, 189


 254, 188, 189

 254, 163, 164

 254, 213, 214

 254, 137, 139

 254, 239, 239

 254, 112, 114

254, 255, 255

 254, 86, 89

 254, 61, 64

 254, 36, 39

 254, 10, 14

 254, 0, 4

Harmonies

Analogous

The Analogous color harmony consists of three colors that are next to each other on the color wheel.



248, 188, 213



254, 188, 189



247, 204, 169

Triad

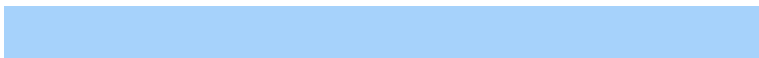
The Triadic color harmony groups three colors that are evenly spaced from another and form a triangle on the color wheel.



254, 188, 189



173, 214, 209



166, 195, 251

Complementary

The Complementary color scheme is a pair of colors which are on the opposite of each other on the color wheel.



254, 188, 189



188, 221, 254

Split Complementary

Split-complementary colors differ from the complementary color scheme. The scheme consists of three colors, the original color and two neighbors of the complement color.



142, 184, 240



254, 188, 189



153, 192, 218

Square

The Square scheme is like the rectangle color scheme, but the four colors are evenly spaced on the color wheel.



254, 188, 189



159, 208, 162



138, 178, 220



198, 201, 249

Rectangle

The Rectangle color scheme consists of four colors that form a rectangle on the color wheel.



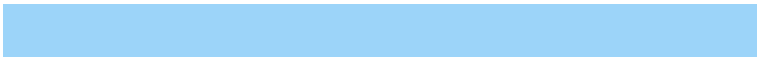
254, 188, 189



237, 235, 160



138, 178, 220



156, 191, 249

Sweetspot

The Sweet Spot groups the original color and five complimentary colors.



254, 188, 189



255, 235, 235



253, 188, 254



128, 115, 115



0, 0, 0



128, 128, 128

Same Dimension

The Same Dimension uses a secret algorithm to generate beautiful new colors.



254, 188, 189



255, 176, 177



254, 250, 188



128, 115, 115



191, 0, 3



64, 0, 1

Inverse Universe

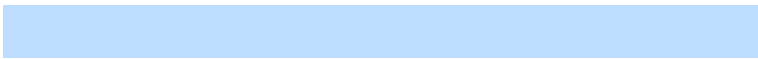
The Inverse Universe completely reimagines the original color for something new.



254, 188, 189



255, 176, 177



188, 210, 254



128, 115, 115



191, 0, 3



64, 0, 1

Previews

White Background



This preview shows how the RYB color 254, 188, 189 looks on a white background.

Color Contrast Check

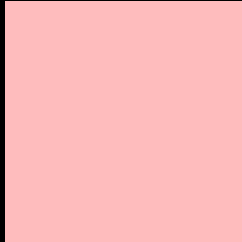
Large Text (above 18pt) WCAG AA × Fail

Any Text WCAG AA × Fail

Large Text (above 18pt) WCAG AAA × Fail

Any Text WCAG AAA × Fail

Black Background



This preview shows how the RYB color 254, 188, 189 looks on a black background.

Color Contrast Check

Large Text (above 18pt) WCAG AA ✓ Pass

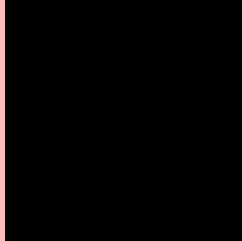
Any Text WCAG AA ✓ Pass

Large Text (above 18pt) WCAG AAA ✓ Pass

Any Text WCAG AAA ✓ Pass

If you want to check with other color combinations, try the [Color Contrast Checker](#).

RYB 254, 188, 189 Background



This preview shows how black text looks on a background with the RYB color 254, 188, 189.

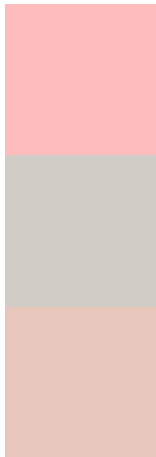


This preview shows how white text looks on a background with the RYB color 254, 188, 189.

Color Blindness Simulation

Color vision deficiency is a very complex topic, and I could not describe the different causes any better than Wikipedia does, so if you want to learn more, you should check out their [article about color blindness](#).


Dichromacy



Original Color
254, 188, 189

Protanopia
210, 210, 198

Deuteranopia
231, 202, 187



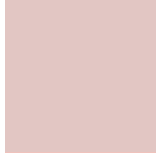
Tritanopia
255, 186, 201

Trichromacy



Original Color

254, 188, 189



Protanomaly

226, 198, 195



Deuteranomaly

239, 195, 188



Tritanomaly

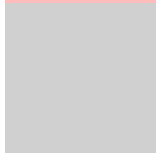
255, 187, 197

Monochromacy



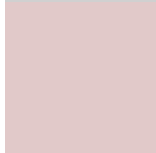
Original Color

254, 188, 189



Achromatopsia

208, 208, 208



Achromatomaly

225, 201, 201

CSS Examples

Text

The CSS property to change the color of the text to RYB 254, 188, 189 is called "color". The color property can be set on classes, ids or directly on the HTML element.

This example shows how text in the color rgb(254, 188, 189) looks like.

```
.text, #text, p{  
    color:rgb(254, 188, 189)  
}
```

If you want to add a text shadow in that color use the text-shadow property, you can generate a text shadow directly with our [CSS Text Shadow Generator](#).

Here you see how black text with a 4 pixel rgb(254, 188, 189) colored shadow looks like.

```
.shadow{ text-shadow: 4px 4px 2px rgb(254, 188, 189) }
```

Border

The CSS property to change the border of an element to RYB 254, 188, 189 is called "border". The border property can be set on classes, ids or directly on the HTML element.

This example shows the color as border, it can be applied via the CSS property "border" or "border-color".

```
.border, #border, table{ border:4px solid rgb(254, 188, 189) }
```

If only the border color should be changed use the property `border-color`.

```
.border{ border-color:rgb(254, 188, 189) }
```

If you want to add a box shadow in that color use:

Here you see how a box with a 4 pixel `rgb(254, 188, 189)` colored shadow looks like.

```
.boxshadow{ -moz-box-shadow:4px 4px 4px  
4px rgb(254, 188, 189); -webkit-box-  
shadow:4px 4px 4px 4px rgb(254, 188, 189);  
box-shadow:4px 4px 4px 4px rgb(254, 188,  
189) }
```

Background

The CSS property to change the background color of an element to RYB 254, 188, 189 is called "background". The background property can be set on classes, ids or directly on the HTML element.

```
.background, #background, body{  
background: rgb(254, 188, 189) }
```

If only the background color should be changed can be used:

```
.background{ background-color: rgb(254,  
188, 189) }
```

This example shows the color as background, it is applied via the CSS property "background".

To optimize and compress your CSS code, you can use our [online CSS compressor and optimizer](#) based on csstidy. If you want to create a linear or radial gradient as background or border, check our [CSS Gradient Generator](#).

Hey! You found this booklet interesting? Support Converting Colors with the new Membership Option!

The pro membership hides all ads, plus gives you double the colors in the color bucket, and more awesome pro features!

[Learn more, Memberships starting at \\$2.50/m!](#)

**Follow me
on Twitter!**

@ConvertingColor