

Converting Colors

`RYB(255, 100, 149)`

Have a look what the booklet for
RYB(255, 100, 149) contains.

RYB(255, 100, 149)	3
<i>Conversions</i>	4
<i>Details</i>	6
<i>Harmonies</i>	11
<i>Previews</i>	23
<i>Color Blindness Simulation</i>	26
<i>CSS Examples</i>	29

Color

R_YB(255, 100, 149)

Conversions

Conversions Part 1

Format	Color
Hex	FF6495
RGB	255, 100, 149
RGB Percent	100%, 39%, 58%
CMY	0.0000, 0.6078, 0.4157
CMYK	0.00, 0.61, 0.42, 0.00
HSL	341°, 100%, 70%
HSV	341°, 61%, 100%
XYZ	51.2220, 32.5443, 32.0157
YIQ	151.9310, 76.6510, 48.0990

Conversions

Conversions Part 2

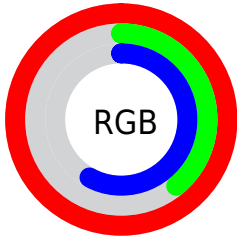
Format	Color
R _Y B	255, 100, 149
Decimal	16737429
CIE Lab	63.79, 62.97, 4.58
CIE LCh	64, 63.132, 4.156
Yxy	32.5443, 0.4424, 0.2811
Android (android.graphics.Color)	4294927509 (0xFFFF6495)
YUV	151.9310, -1.4450, 90.3915
Hunter-Lab	57.0476, 60.4386, 6.6591

Details

The RYB color **255, 100, 149** is a light color, and the websafe version is hex **FF6699**. A complement of this color would be **100, 192, 255**, and the grayscale version is **152, 152, 152**.

A 20% lighter version of the original color is **255, 157, 203**, and **194, 38, 99** is the 20% darker color. If you saturate the color by 10%, you get **255, 75, 132**, and if you desaturate by 10%, it is **255, 125, 166**.

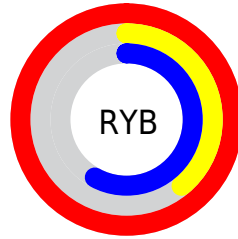
Distribution



Red (100%)

Green (39%)

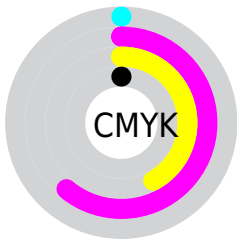
Blue (58%)



Red (100%)

Yellow (39%)

Blue (58%)

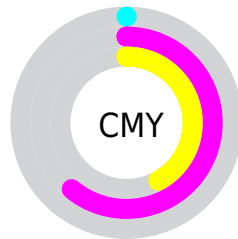


Cyan (0%)

Magenta (61%)

Yellow (42%)

Black (0%)



Cyan (0%)

Magenta (61%)

Yellow (42%)

Brightness & Saturation Gradients

These gradients show how the RYB color 255, 100, 149 changes by changing the brightness by 10 percent. The first figure shows a shift by +10% for each color and the second figure -10%.

Similar to the brightness gradients but the following saturation gradients show a change of the RYB color 255, 100, 149 by changing the saturation by 10% instead.

 255, 100, 149

 255, 100, 149

255, 255, 255

 224, 71, 123

 255, 157, 203

 194, 38, 99

 255, 186, 231

 164, 0, 75

 255, 215, 255

 134, 0, 53

 255, 245, 255


 104, 0, 32

 76, 0, 6

 47, 0, 2

 0, 0, 0

 255, 100, 149

 255, 100, 149

■ 255, 75, 132

■ 255, 125, 166

■ 255, 49, 114

■ 255, 151, 184

■ 255, 24, 97

■ 255, 177, 201

■ 255, 0, 81

■ 255, 202, 219

■ 255, 227, 236

■ 255, 253, 254

■ 255, 255, 255

Harmonies

Analogous

The Analogous color harmony consists of three colors that are next to each other on the color wheel.



229, 112, 205



255, 100, 149



250, 113, 94

Triad

The Triadic color harmony groups three colors that are evenly spaced from another and form a triangle on the color wheel.



255, 100, 149



53, 169, 104



0, 103, 255

Complementary

The Complementary color scheme is a pair of colors which are on the opposite of each other on the color wheel.



255, 100, 149



100, 192, 255

Split Complementary

Split-complementary colors differ from the complementary color scheme. The scheme consists of three colors, the original color and two neighbors of the complement color.



0, 98, 216



255, 100, 149



0, 113, 178

Square

The Square scheme is like the rectangle color scheme, but the four colors are evenly spaced on the color wheel.



255, 100, 149



51, 176, 25



0, 96, 181



0, 98, 255

Rectangle

The Rectangle color scheme consists of four colors that form a rectangle on the color wheel.



255, 100, 149



233, 163, 63



0, 96, 181



0, 102, 245

Sweetspot

The Sweet Spot groups the original color and five complimentary colors.



255, 100, 149



255, 209, 224



206, 100, 255



128, 99, 108



0, 0, 0



128, 128, 128

Same Dimension

The Same Dimension uses a secret algorithm to generate beautiful new colors.



255, 100, 149



255, 69, 128



255, 134, 100



128, 115, 119



191, 0, 60



64, 0, 20

Inverse Universe

The Inverse Universe completely reimagines the original color for something new.



255, 100, 149



255, 69, 128



100, 170, 255



128, 115, 119



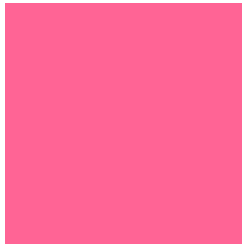
191, 0, 60



64, 0, 20

Previews

White Background



This preview shows how the RYB color 255, 100, 149 looks on a white background.

Color Contrast Check

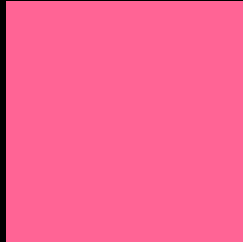
Large Text (above 18pt) WCAG AA × Fail

Any Text WCAG AA × Fail

Large Text (above 18pt) WCAG AAA × Fail

Any Text WCAG AAA × Fail

Black Background



This preview shows how the RYB color 255, 100, 149 looks on a black background.

Color Contrast Check

Large Text (above 18pt) WCAG AA ✓ Pass

Any Text WCAG AA ✓ Pass

Large Text (above 18pt) WCAG AAA ✓ Pass

Any Text WCAG AAA ✓ Pass

If you want to check with other color combinations, try the [Color Contrast Checker](#).

RGB 255, 100, 149 Background



This preview shows how black text looks on a background with the RGB color 255, 100, 149.



This preview shows how white text looks on a background with the RGB color 255, 100, 149.

Color Blindness Simulation

Color vision deficiency is a very complex topic, and I could not describe the different causes any better than Wikipedia does, so if you want to learn more, you should check out their [article about color blindness](#).


Dichromacy



Original Color
255, 100, 149

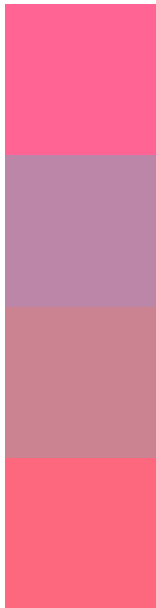
Protanopia
150, 154, 180

Deuteranopia
175, 151, 142



Tritanopia
253, 107, 114

Trichromacy



Original Color
255, 100, 149

Protanomaly
188, 134, 169

Deuteranomaly
204, 131, 145

Tritanomaly
254, 104, 127

Monochromacy



Original Color
255, 100, 149

Achromatopsia
152, 152, 152

Achromatomaly
189, 133, 151

CSS Examples

Text

The CSS property to change the color of the text to RYB 255, 100, 149 is called "color". The color property can be set on classes, ids or directly on the HTML element.

This example shows how text in the color `rgb(255, 100, 149)` looks like.

```
.text, #text, p{  
    color:rgb(255, 100, 149)  
}
```

If you want to add a text shadow in that color use the text-shadow property, you can generate a text shadow directly with our [CSS Text Shadow Generator](#).

Here you see how black text with a 4 pixel rgb(255, 100, 149) colored shadow looks like.

```
.shadow{ text-shadow: 4px 4px 2px rgb(255, 100, 149) }
```

Border

The CSS property to change the border of an element to RYB 255, 100, 149 is called "border". The border property can be set on classes, ids or directly on the HTML element.

This example shows the color as border, it can be applied via the CSS property "border" or "border-color".

```
.border, #border, table{ border:4px solid rgb(255, 100, 149) }
```

If only the border color should be changed use the property `border-color`.

```
.border{ border-color:rgb(255, 100, 149) }
```

If you want to add a box shadow in that color use:

Here you see how a box with a 4 pixel `rgb(255, 100, 149)` colored shadow looks like.

```
.boxshadow{ -moz-box-shadow:4px 4px 4px  
4px rgb(255, 100, 149); -webkit-box-  
shadow:4px 4px 4px 4px rgb(255, 100, 149);  
box-shadow:4px 4px 4px 4px rgb(255, 100,  
149) }
```

Background

The CSS property to change the background color of an element to RGB 255, 100, 149 is called "background". The background property can be set on classes, ids or directly on the HTML element.

```
.background, #background, body{  
background: rgb(255, 100, 149) }
```

If only the background color should be changed can be used:

```
.background{ background-color: rgb(255,  
100, 149) }
```

This example shows the color as background, it is applied via the CSS property "background".

To optimize and compress your CSS code, you can use our [online CSS compressor and optimizer](#) based on csstidy. If you want to create a linear or radial gradient as background or border, check our [CSS Gradient Generator](#).

Hey! You found this booklet interesting? Support Converting Colors with the new Membership Option!

The pro membership hides all ads, plus gives you double the colors in the color bucket, and more awesome pro features!

[Learn more, Memberships starting at \\$2.50/m!](#)

**Follow me
on Twitter!**

@ConvertingColor